

Stopping COVID-19 in its tracks

Terms to Know



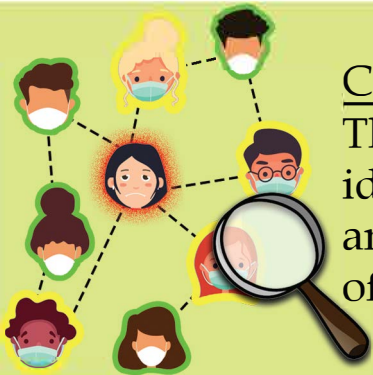
Case

A person who has tested positive for COVID-19



Close Contact

A person who was within 6 feet of a case for a combined time of 15 minutes or more over a 24 hour period



Contact Tracing

The process of identifying, locating, and monitoring contacts of the Case



Isolation

Separates sick people with a contagious disease from people who are not sick



Quarantine

Separates and limits the movement of people who were in contact with a person who has a contagious disease in case they were infected and become sick

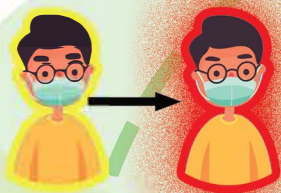


Stopping COVID-19 in its tracks

What is Contact Tracing?

Laboratory test confirms COVID-19 Case

Close contacts should be tested for COVID-19. If they test positive, they become a new case.



The Hawai'i Department of Health's contact tracers protect the community from the spread of COVID-19 by identifying, quarantining, and giving guidance to persons who have close contact with a case.

Department of Health is notified.



Case should isolate for at least 10 days and until they are fever free and their symptoms have improved.



Close contacts quarantine for 10 days and should monitor their health. If they have continued contact with the case, they must quarantine for 10 days AFTER the case is released from isolation.



Department of Health works with the case to identify anyone they may have had close contact and asks the case to alert their contacts.

How You Can Help Your Community



Wear your mask

Physical Distance (6 feet apart)



Wash your hands

Contact tracing is done by official Department of Health employees and volunteers. They will only confirm identifying information such as your name and birthdate. They will never ask you for your social security number or any financial information. To verify the identity of a contact tracer, please call the Department of Health at 808-586-4586.