



Hawai'i County Food Access Coordinator Position

Outcome Harvesting Evaluation Summary

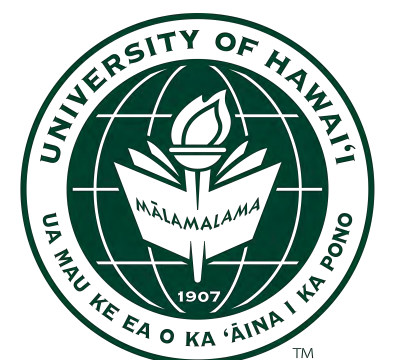
November 2021

This evaluation was funded by
the Hawai'i State Department of Health,
Chronic Disease Prevention and Health
Promotion Division.

Prepared by:

L. Brooke Keli'ikoa, DrPH; Nicole Peltzer, MPH;
Mika Thompson, MSc; & Lindsey Amina, BS

Healthy Hawai'i Initiative Evaluation Team
University of Hawai'i at Mānoa
Office of Public Health Studies

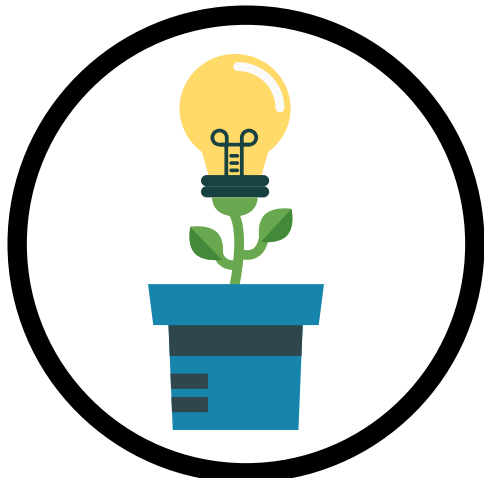


UNIVERSITY
of HAWAII®
MĀNOA

The Hawai'i County Food Access Coordinator contributed to 5 meaningful changes to the food system.

Change to the Food System (Harvested Outcome)

Contribution of Food Access Coordinator



Food system issues have received increased visibility in Hawai'i County.

- Shares knowledge and resources with county government and community stakeholders
- Helps to coordinate annual Hawai'i Island Community Food Summit



The network of food system stakeholders has been strengthened to facilitate collaboration.

- Serves as the facilitator of the Hawai'i Island Food Alliance (HIFA)
- Actively involved in multiple state and county collaborative groups



A collective action plan to strengthen the Hawai'i Island food system is under development.

- Guides the development of a county action plan through numerous planning and engagement efforts



Community-driven food system projects have received (county and other grant) funding.

- Partners with multiple community organizations to support grant writing and leverage funding opportunities



Hawai'i Island stakeholders coordinated food response efforts during the COVID-19 pandemic.

- Supports funding for community food distribution efforts
- Facilitates communication and resource sharing across stakeholders

Hawai'i County Food Access Coordinator Position

Background

In 2018, the **Food Access Coordinator** position was established in Hawai'i County with funding from the County and the Hawai'i State Department of Health [SNAP-Ed Program](#). The SNAP-Ed Program uses federal funds from the USDA Food and Nutrition Service to promote healthy eating and active lifestyles among lower-income populations. A core group of community stakeholders advocated for creating the position in Hawai'i County and conceptualized how the position would support community food systems. Through their collective vision, the position was created and housed in the Hawai'i County Department of Research & Development. The initial Food Access Coordinator was hired in November 2018 and began work on assessing the food system and building collaborative relationships among stakeholders. After the initial coordinator resigned, the position was subsequently filled in October 2019 by the current Food Access Coordinator.

The Food Access Coordinator is broadly tasked with improving the food system for Hawai'i Island and increasing access to fresh local foods, especially for populations experiencing food insecurity. Almost one-third of Hawai'i Island adults experience food insecurity (1). To build capacity for food system initiatives, the Food Access Coordinator serves as the facilitator of the [Hawai'i Island Food Alliance](#) (HIFA), which strives for a "resilient and sustainable local food system" and serves as a platform to share resources, influence policy, and generate partnerships. In this collaborative space, the Food Access Coordinator works closely with the Hawai'i Island [Healthy Eating + Active Living community coalition](#) coordinators from the Hawai'i Public Health Institute and bridges the agricultural sector through the [Hawai'i Island Agriculture Partnership](#). Additional critical partnerships and collaborative relationships are described later in the evaluation findings.



Evaluation Study Overview

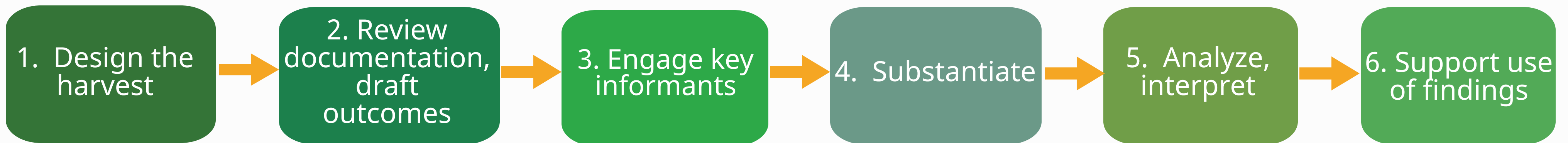
This evaluation study focused on the Food Access Coordinator **position** and sought to understand the value of funding such a position. In addition, the evaluation had a formative aim of learning what about the position was working well in the first few years of existence and what could be improved in future endeavors. Thus, the intended evaluation uses were to support sustainable funding for the position and to inform the future efforts of the Food Access Coordinator.

Based on the evaluation purpose, the evaluation team proposed using **Outcome Harvesting** to retrospectively collect information about what the position had achieved in the first few years. Outcome Harvesting is a participatory, utilization-focused approach that broadly consists of six steps.

"**Outcome Harvesting** collects ('harvests') evidence of what has changed ('outcomes') and, then, working backwards, determines **whether and how** an intervention has contributed to these changes." (2)

Outcomes are defined as observable changes in actions, practices, activities, relationships, or policies of individuals, groups, communities, organizations, or institutions (3).

Outcome Harvesting Process



Oct-Dec 2020

The evaluation team engaged two primary harvest users: the current Food Access Coordinator and the SNAP-Ed program manager who funds the position. Together, we identified the users of the Outcome Harvest and how the evaluation process and findings would be used by them. Through several online meetings, we also clarified what questions would guide the harvest and how we would collect information in order to answer the questions.

Jan 2021

The evaluation team reviewed available documents related to the Food Access Coordinator position, including quarterly progress reports, websites, HIFA meeting minutes, and other programmatic documents provided by the Food Access Coordinator. From the information in the documents, the evaluation team drafted the first version of the outcome descriptions and asked for feedback from the Food Access Coordinator and the SNAP-Ed program manager.

Feb-July 2021

The evaluation team conducted 11 semi-structured interviews with key informants to better identify the outcomes and understand the contributions of the Food Access Coordinator position. Nearly all the people we contacted for interviews (11 of 12) agreed to participate. Interviews were conducted virtually over Zoom in March-April 2021. In addition to interviewing the current and previous Food Access Coordinators, we interviewed key informants representing community organizations and the county government. Information from the interviews was used to revise the drafted outcome descriptions, then sent to key informants for their review and feedback.

Aug 2021

Substantiation is intended to improve the validity and credibility of the evaluation findings. In this step, the evaluation team reached out to four substantiators who could serve as independent, yet knowledgeable individuals to provide feedback on the revised outcome descriptions. Through an online survey, we asked substantiators to review the outcome descriptions, then rate their agreement with each outcome and the contribution of the Food Access Coordinator. Three of the four people we contacted provided their responses to the online survey in August 2021.

Sep 2021

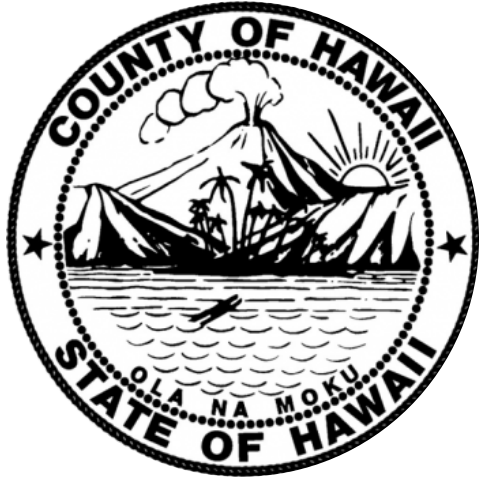
Feedback from key informants and substantiators was incorporated into the outcome descriptions. The evaluation team met with the Food Access Coordinator and SNAP-Ed program manager to review the outcome descriptions in September 2021. The outcome descriptions were finalized in October 2021.

Oct-Nov 2021

This report is intended to provide answers to the harvesting questions. We will support the use of findings by planning a final discussion among harvest users after the report is disseminated.

Key Outcome Harvesting Components

Harvest Users



County of Hawai'i: The Food Access Coordinator position is situated in the Department of Research & Development. The evaluation would inform the county's decision-making around sustainably funding the Food Access Coordinator position.

Hawai'i State Department of Health, SNAP-Ed Program: The SNAP-Ed Program uses its federal funding to support food access coordinators in all four counties in Hawai'i. The evaluation would provide insight into the value of funding these positions and allow other counties to learn from the Hawai'i County case study.



Community Food System

Stakeholders: The Food Access Coordinator position serves as a bridge between the county government and community members working on food system issues. The evaluation would provide insight into whether the position was meeting community needs.



Guiding Questions for the Outcome Harvest

- How has the position **fostered collaboration** among food system stakeholders in Hawai'i Island?
- How has the position **supported community efforts** to increase access to healthy foods in Hawai'i Island?
- How has the position helped to **respond to the COVID-19 pandemic** in Hawai'i Island?
- What should the Food Access Coordinator work on in **upcoming years** to increase access to healthy foods in Hawai'i Island?

Key informants represented the following organizations*



Center for Getting Things Started
Hāmākua Institute
Hawai'i County Department of Research & Development
Hawai'i Island School Garden Network
Hawai'i Public Health Institute
Kamehameha Schools
Kōkua Harvest Program
Māla'ai: The Culinary Garden of Waimea Middle School
The Food Basket
The Kohala Center

*Note: several participants represented more than one organization; several participants also represented the same organization

Substantiators represented the community and Hawai'i County government.



Evaluation Findings

Food system stakeholders **strongly feel** that the Food Access Coordinator position is needed in Hawai'i County.

All evaluation participants expressed a vital need for the Food Access Coordinator position, with many stating that the position was well-situated within the Hawai'i County government to serve as a voice for Hawai'i Island needs and issues. The position helps to link the county to statewide food system initiatives and provides continuity across Mayoral administrations. Moreover, interviewees discussed how the position helps to inform policy-making decisions by providing education and insights into the complexity of the food system. Prior to establishing the position, the Hawai'i Island food system mainly existed in silos, which meant that many organizations were either unaware of each other's activities or had differing and sometimes conflicting agendas, leading to duplicative efforts and competition for limited resources. The position serves as an essential bridge between food system stakeholders, helping to increase awareness of each other's activities and foster collaboration.

Multiple key informants emphasized not only a need for the position to continue but a concern that the Food Access Coordinator was tasked with too large a scope of work for one person, which introduced the potential for burnout. Thus, interviewees discussed the need to increase capacity through having multiple positions. One suggested solution was that one position could remain housed in the county whereas another position could be housed in a non-profit. The scopes of work then could be divided either by content focus (food system versus direct food access) or geographic representation.

"It is only through commitment to further developing our food system will we be successful with minimizing our dependability on food from the 'mainland.' The Coordinator position is critical in helping us get there. Food is so basic to life yet this position has not been a priority. **This position needs to be formally situated and funded in our County.**"



"The Food Access Coordinator has and needs to continue to play the critical and essential roles of **awareness raiser/educator, coordinator, connector and weaver, leader/visionary, broker, facilitator**, among others, to increase food access on Hawai'i Island, especially for the most vulnerable."



"**There is so much strength to having [The Food Access Coordinator] position sitting at the county because she is able to be in community and yet be in the office of those policymakers and talking to them about where real changes are needed and what's going on**, and it helps bring a level of reality and more diverse reality that they may not always have access to... they may come into office knowing their specific communities, but they're not going to know the breadth of the community that a Food Access Coordinator position will get to know."



*"[The Food Access Coordinator] really makes sure that **she's our engine and we're part of her train.** Without her leadership and saying, 'Yes, this is how we're moving forward'...we wouldn't be moving forward."*

Awareness, Knowledge

Collaboration

Action Planning

Funding

Emergency Response





1 The Food Access Coordinator has helped to increase awareness and knowledge of food system issues among Hawai'i Island stakeholders.

Outcome

Since 2018, the visibility of food system issues has been elevated in Hawai'i County. The Hawai'i Island Food Alliance organized annual Hawai'i Island Community Food Summits to spotlight state and county-level food system issues, local food production, and community-led food system initiatives. Attendees included elected officials, county agency staff, school educators, farmers, and representatives from community-based and grassroots organizations. Educational materials and other food system resources were developed and disseminated to increase knowledge and awareness of food system issues. At the policy level, the food system is being incorporated into county planning documents and policy discussions.

"It's taken a lot of education within the county for them to understand the scope of food insecurity here and I think that the food access coordinator has had an enormous role in advancing that education. **Food was never really at the top of the list and suddenly everybody's talking about it.**"



Contribution of Food Access Coordinator

The Food Access Coordinator position plays a critical role in sharing knowledge and information across county government and community channels by providing information, reports, suggestions, resources, and education to county food system stakeholders. Important examples of this are described further below.

Upon establishing the position in 2018, the Food Access Coordinator began serving as the facilitator of the Hawai'i Island Food Alliance (HIFA). Through HIFA, the Food Access Coordinator helps to organize the annual Hawai'i Island Community Food Summit to engage stakeholders in developing the Food System Action Plan, increase knowledge about local foods, and spotlight county and statewide food policy issues. The Food Access Coordinator helped with a well-attended Food Summit in 2019, as well as virtual events in 2020 and 2021.

"**Food systems has been getting more attention lately, and I think it's because of just this position** when they started doing the Food Summit...the Mayor with a Sustainability Summit there's a lot of interest and publicity about food systems, so it's something where it's picking up speed. We're trying to expand programs, we're trying to improve programs, trying to increase even educational materials, like say about commercial kitchens and locations, access to them..."



The Food Access Coordinator highlights community food system work through government agency meetings and events like the Mayor's Sustainability Summit. Situated in the Research & Development Department, the coordinator also serves as a source of information about food insecurity and challenges facing the food system to county government officials in various departments, including the Mayor's Office, the County Council, Environmental Management, Planning, and Civil Defense. Within county government, the coordinator contributes food system expertise to government planning documents, including the County of Hawai'i General Plan update, the Economic Recovery Plan, the Kīlauea Recovery and Resilience Plan, the Hāmākua Harvest Food Waste Management Plan, and the Climate Change Adaptation and Mitigation Plan. One substantiator noted that the Food Access Coordinator has been "proactive in raising awareness and expanding knowledge of community-led food systems initiatives" specifically in regards to county planning and implementation processes for disaster recovery and resilience.

Prior to the COVID-19 pandemic, the coordinator responded to 350 requests for assistance and information, updated and maintained the contact list for HIFA, shared resources through the HIFA mailing list, generated government reports on current issues in the food system, and initiated the food system network analysis study. The coordinator also has worked to expand knowledge through developing and distributing SNAP-Ed Garden materials, supporting farm-to-school and garden-to-cafeteria programs, and offering food safety training to school garden educators.

Significance

A deeper understanding of food system issues helps stakeholders to direct efforts and resources towards community-driven solutions. The Food Access Coordinator position demonstrates the county's commitment to addressing the food system through dedicated staff time. Paid staff positions within local government are well suited to increase food access because they are able to identify areas of need, work directly with affected communities, and bring community members to the table so that they have a voice in government planning activities (4).

2

The Food Access Coordinator has nurtured collaboration to strengthen the network of food system stakeholders.



"Having that island-wide view of food system, stakeholders, and their roles and interactions I was able to broaden that Hawai'i Island Food Alliance network and really the best part of that was being able to be kind of a **network weaver and matchmaker.**"



"When [the Food Access Coordinator] was writing, for example, that USDA grant last year, she was very inclusive in terms of reaching out to the HIFA members that were more interested, it seemed, in the development of that work. And so you know, I've never worked with someone at the county level who is writing a grant in a Google Doc that is accessible to community members to contribute to... **nothing gets more transparent and community-based than that.**"



Outcome

Between 2018-2021, Hawai'i Island food system stakeholders increased their professional connections with each other and gained capacity to work collaboratively through improved facilitation and meeting skills. Different sectors of the food system were connected, such as educators, local producers, institutional buyers, distributors, and retailers. As a result, the silos among community members, community-based organizations, statewide and county groups, grantees receiving county funds, and policymakers began to break down. The number of collaborative initiatives increased during this time period.

Contribution of Food Access Coordinator

Altogether, the Food Access Coordinator has engaged over 300 stakeholders to analyze community needs, find opportunities for partnership, and continue to improve the existing food system. Firstly, the Food Access Coordinator worked to increase membership and participation in the Hawai'i Island Food Alliance (HIFA). In 2019-2020, HIFA membership increased from 45 members to 130 members. As the facilitator of HIFA, the coordinator provides a space for members to connect and collaborate on projects, such as the annual Hawai'i Island Community Food Summits that are attended by a diverse group of community members, local government officials, farmers, restaurant owners and chefs, food processors, and funders. About 30 HIFA members were also provided with training on effective meeting facilitation skills and empowerment evaluation.

In addition to convening HIFA, the coordinator is actively involved in multiple groups that work on county and state-level food system issues (Table 1). The FAC provides leadership, serves as the voice of the county in these working groups, and helps to minimize duplication of efforts on food system issues. One substantiator pointed out that the coordinator plays an important role in engaging with State and Federal programs and staff, "as these entities have the policy authority and established programs along with significant financial resources versus the County of Hawai'i which lacks in all three areas."

Significance

Cross-sector collaboration is needed to increase access to healthy foods, including fresh produce (5). Having a paid coordinator position to facilitate collaboration helps build strong relationships and minimize strain on time and resources. This outcome demonstrates the Food Access Coordinator's value in facilitating a collaborative approach to reduce duplicative efforts, build relationships, and nurture collaboration.

Table 1: Collaborative groups in which the Food Access Coordinator serves as a voice for Hawai'i County

Organization/Group	Reach	Food Access Coordinator Role
Hawai'i Island Food Alliance	Hawai'i County	Lead Facilitator
Hawai'i Island Agriculture Partnership	Hawai'i County	Executive Committee Member
Hawai'i Local Food Institutional Purchasing Hui	State	Advisory Member
Hawai'i Farm to School Hui	State	Steering Circle, School Food Systems Circle, Garden to Cafeteria Circle
Transforming Hawai'i's Food Systems Together	State	Advisory Member
Obesity Prevention Task Force	State	Member
Food Hub Working Group	State	Member
Hawai'i Island School Garden Network	State	Member
Food and Farmers Working Group	State	Member
Hawai'i Hunger Prevention Taskforce	State	Member
Hawai'i Famers Union United	State	Member
Urban Sustainability Directors Network	State	Member
Double Up Food Bucks Working Group	State	Member
Hawai'i County Chamber of Commerce Cost of Living Taskforce	Hawai'i County	Member
Urban Sustainability Directors Network	National	Member

3 The Food Access Coordinator has guided the development of a collective action plan to strengthen the Hawai'i Island food system.



Outcome

Between 2018-2021, Hawai'i Island stakeholders contributed to planning efforts, data collection, and the development of the Hawai'i County Food System Action Plan. In addition, multiple studies encompassing food system mapping, the feasibility of an Agricultural Innovation Center, and food policy were initiated.

Contribution of Food Access Coordinator

In 2019, the Food Access Coordinator reviewed examples of existing food system plans, participated in state and county-level food system studies, and helped to facilitate the development of the Hawai'i County Food System Action Plan. For example, the coordinator supported the Hawai'i Island Agriculture and Food Systems Study with Hāmākua Institute, Hawai'i Island Agricultural Partnership, and Kamehameha Schools to advocate for the inclusion of food security issues and complete a value chain analysis. The Food Access Coordinator involved many stakeholders in the planning process for the Hawai'i County Food System Action Plan and presented updates at the annual Food Summit for community feedback. In addition, the Food Access Coordinator provided feedback for the Food System section of the County General Plan, collaborated with the Kohala Center to map commercial kitchens in the county, facilitated the development of an Emergency Food Plan, and launched the Food System Network Assessment Survey.

Significance

This outcome demonstrates the range of activities undertaken by the coordinator to understand the food system, generate shared knowledge among food system stakeholders, and facilitate county-level goal setting and action planning to address food access issues within the constraints of limited resources and county authority. Inclusivity is crucial to the development of an effective action plan: through involving various food system stakeholders, planning efforts may better reflect the on-the-ground realities of the food system (6).

"The goal with developing a food system action plan is that we're trying to **re-reflect back to the community what they're doing and what their goals are**, and also better connect people to each other, as a way of [reflecting] progress."



"[The Food Access Coordinator] helped really kind of enrich the whole process because we had more of the food and ag people talking to each other and not looking through totally separate lenses, but **seeing how those lenses overlap, seeing how those discussions overlap**, and recognizing that at the end of the day, if this state wants food security, it can't do so assuming that farmers are going to operate at a loss."



"The FAC has been effective in navigating internal County processes and partnerships to advance a **coordinated, collaborative, and strategic approach to food system action planning** that is informed by community and solid research and technical work."



4

The Food Access Coordinator has increased funding for community-driven food system projects.



“In [the Food Access Coordinator’s] position, she’s been able to really navigate and help us with government funding. **She’s been a voice for us... at the government level...**She’s been really helpful with county grants. We’ve done so many projects together.”



“[The Food Access Coordinator’s] done a really great job of **connecting small and medium-sized nonprofits into some of what’s going on and being supported by the county.** And these are organizations that have...desperately needed that kind of recognition... Hopefully we’re starting to develop a long term relationship so that as we’re serving public school students, home gardeners, and people in the community...we’re getting some support from the county... We’re well suited to do it, because we’ve already been doing it, but if we don’t have to be quite so insecure, economically or even in terms of policy because we’re getting some support from the institutions, it’s a huge step forward.”



Outcome

Between 2018-2021, several community organizations received grant funding and in-kind support for grassroots efforts to increase access to healthy foods for lower-income Hawai’i Island residents.

Contribution of Food Access Coordinator

The Food Access Coordinator has worked with multiple community organizations to increase awareness of funding opportunities and support grant applications around farm to school, local food production and processing, and direct food access. Through HIFA meetings and communications, the coordinator shared information about funding opportunities with members. The Food Access Coordinator increased capacity for grant funding by providing grantwriting workshops, conducting needed research for grant proposals, identifying community needs and priorities, writing letters of support for grant applications, and directly assisting with proposals. In addition, the coordinator’s position within the county has leveraged opportunities for collaborative funding efforts and helped to direct available grant funding to support existing community-driven work. For example, the Food Access Coordinator helped to facilitate funding for the Farm to Keiki preschool garden project, the Food Basket’s work on DA BUX double up food bucks, the Local Food Promotion project, and the Keiki Backpack program. The coordinator also supported the Hawai’i County Economic Opportunity Council to improve the Senior Farmer’s Market Nutrition Program for Hawai’i Island.

Significance

This outcome demonstrates how the Food Access Coordinator has supported grant proposals and increased funding opportunities for projects that will increase access to healthy foods in lower-income populations. Government agencies can play an important role in supporting collaborative nutrition networks, especially through funding opportunities (7).

5 The value of the Food Access Coordinator position was demonstrated through the collaborative response to the COVID-19 pandemic.



Outcome

Food system stakeholders responded collaboratively to the urgent food insecurity issues triggered by the COVID-19 pandemic. Through HIFA, stakeholders shared information with each other, developed resource lists, and coordinated community food assistance efforts. Nearly \$4 million from federal 2020 CARES Act funding was directed towards food assistance in Hawai'i County. The COVID-19 pandemic also heightened interest in local food production and presented an opportunity to direct more locally-grown produce to Hawai'i Island residents, including those experiencing food insecurity.

Contribution of Food Access Coordinator

The Food Access Coordinator played a pivotal role in responding to the heightened food insecurity during COVID-19. First, within government, the coordinator ensured that the county was aware of the increased food needs and provided content area expertise on the importance of directing emergency relief funding to community partners involved in direct food distribution. Second, the Food Access Coordinator helped to facilitate communication about emergency response efforts through regular HIFA meetings, hosting a local food distribution call, and connecting local wholesalers to increase local food purchasing. The coordinator was involved in a hands-on way in multiple community activities, including:



Facilitating HIFA meetings to ensure that members were able to discuss coordinating the emergency food response and share information about funding opportunities.



Helping to secure drop-off locations for the Food Basket, in coordination with the Mayor's Office, Parks and Recreation, and Civil Defense which worked with the National Guard and Police Department.



Printing and distributing over 20,000 paper SNAP applications to community partners providing food relief and community services.



Providing support to the Department of Education by tracking school site participation in Grab-and-Go meal distributions.



Developing and maintaining a list of resources, including a map of food distribution locations.



Facilitating the purchase of food directly from farmers and ranchers for the Food Basket and other feeding efforts.



Coordinating donations of fresh local produce from Kōkua Harvest.

"I think what really solidified my participation [in the Hawai'i Island Food Alliance] was COVID because it was a standing platform where folks would get together every six weeks or so and kind of update the members on what was going on in their organization or in their community and so [when] COVID happened, **it was a natural fit for that to be kind of the platform for these community organizations to share information, brainstorm solutions to things that we were seeing...on the ground.**"



"**I think COVID has really shown how crucial the [Food Access Coordinator] position is.** I remember [we] were working on a resource list because you may remember a year ago, like when it was just happening, and people are losing their jobs, needing to be fed, and there was just pop-up meal and produce distributions everywhere. So we compiled a resource list that started just as where to get food and then it grew into where to get other resources."



"[Funding from the State Department of Health] for the FAC met a **significant community-based need for a facilitative position** both in terms of moving forward existing community based initiatives and network, but also responding to the significant and rapid food emergency as a result of COVID."



Significance

This outcome highlights how the Food Access Coordinator position has increased collaborative capacity to respond to emergent community needs. Through HIFA, the Food Access Coordinator laid the groundwork for bringing partners together to share information and engage in honest discussions about community needs. In addition, partners are working to develop the Hawai'i County Emergency Food Plan for future food emergency response.

Next Steps



Evaluation stakeholders expressed that the Food Access Coordinator position is on the right track to address the Hawai'i Island food system and stated the importance of continuing progress in several ongoing projects. In alignment with the priorities of the position, continuing to improve access to local/healthy foods in Hawai'i Island was a commonly mentioned theme. For example, stakeholders discussed the importance of the existing farm-to-school initiatives and how the Food Access Coordinator could continue to facilitate program implementation.



Key informants further underscored the importance of facilitating collaboration across stakeholders and between the county and the community. Some interviewees highlighted the continuation of the annual Food Summit as a key event that brings together many food system stakeholders who would not otherwise be involved without the Food Access Coordinator, while others focused on the continued transparency and funding opportunities brought forth by the coordinator's role as a liaison for the community.



Finalizing the Food System Action Plan was frequently mentioned as a major priority. In addition, interviewees mentioned that after the Food System Action Plan is finalized, the collection of metrics/data might be a future direction for the Food Access Coordinator, especially to inform the community, policymakers and funders of progress and impact.



Conclusions

The Food Access Coordinator position was highly valued by all food system stakeholders who participated in this study, with a common theme being that the position is too important to defund. Stakeholders found that situating the position within county government was a good fit and strongly supported finding a sustainable mechanism to continue the position, such as converting the temporary DOH-funded position into a county-funded civil service position. Based on the vital need for the position and the breadth and complexity of the food system issues, stakeholders recommended having at least two Food Access Coordinator positions to serve Hawai'i County. Having multiple positions would ensure that the needs of all communities on the island were addressed, as well as enable the ability to delineate work scopes around food system work and direct food access for food-insecure residents. Finally, stakeholders largely thought that the Food Access Coordinator was on the right track and were looking forward to the opportunity to implement the community-driven plans currently underway.

References

1. Stupplebeen, D.A., Quensell, M., Peltzer, N.K., & Pirkle, C.M. (no date). Food Insecurity in Hawaii Using a Population-Based Sample: A Data Brief. Retrieved from https://drive.google.com/file/d/13Xs1dbh5jGamhj0otgsWEk9_BniM43wf/view
2. Wilson-Grau, R. (2015). *Outcome Harvesting*. BetterEvaluation. Retrieved from https://www.betterevaluation.org/en/plan/approach/outcome_harvesting.
3. Wilson-Grau, R., & Britt, H. (2013). *Outcome Harvesting*. Ford Foundation.
4. Leib, E.M.B. (2013). All (food) politics is local: Increasing food access through local government action. *Harvard Law & Policy Review*. Retrieved from <http://nrs.harvard.edu/urn-3:HUL.InstRepos:11189975>
5. Wetherill, M.S., White, K.C., Rivera, C., & Seligman, H.K. (2019). Challenges and opportunities to increasing fruit and vegetable distribution through the US charitable feeding network: Increasing food systems recovery of edible fresh produce to build healthy food access. *Journal of Hunger & Environmental Nutrition*, 14, 593-612. DOI: 10.1080/19320248.2018.1484315
6. Lelea, M. A., Roba, G. M., Christinck, A., & Kaufmann, B. (2015). "All relevant stakeholders": A literature review of stakeholder analysis to support inclusivity of innovation processes in farming and food systems. In *Proceedings of the 12th European IFSA Symposium, Newport, UK* (pp. 12-15).
7. Mozaffarian, D., Angell, S. Y., Lang, T., & Rivera, J. A. (2018). Role of government policy in nutrition—barriers to and opportunities for healthier eating. *BMJ*, 361:k2426.

Cover photo source:

[Hawai'i Island Agriculture Partnership](#)

Acknowledgements:

Sarah Freeman

Tammy Chase-Brunelle

Thank you to everyone who served as key informants and substantiators for this study. We greatly appreciate your insights and reflections about the Food Access Coordinator position.