



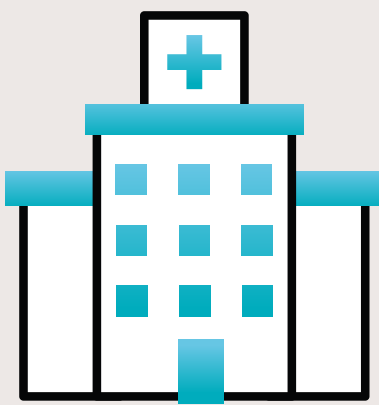
Child & Adolescent Mental Health Division

Suicide Awareness Data & Prevention Resources

Hawai'i Youth Data Overview



From 2018 to 2022, 51 Hawai'i youth aged 10 to 19 years died of suicide. It was the leading cause of death for this age group, surpassing traffic crashes (27 deaths), cancer (19), and heart disease (11).



For every youth (10 per year) who dies of suicide in Hawai'i, another 6 (56 per year) admit to the hospital, and 24 more (247 per year) are treated in emergency departments for nonfatal self-inflicted injuries each year.

The description of youth suicides differs considerably from suicide attempts in age, gender, and mechanism.

Description		Suicides	Suicide Attempts
Gender	Males	78%	25%
	Females	22%	75%
Age	10-14 yrs.	16%	30%
	15-16 yrs.	14%	32%
	17-19 yrs.	71%	38%
Mechanism	Hanging/Suffocation	73%	1%
	Firearms	14%	0%
	Drug Poisoning	2%	55%
	Cutting/Piercing	0%	28%

CONTRIBUTING FACTORS

FATAL YOUTH SUICIDES FROM 2017-2019

- Six (26%) of the 23 victims had problems with their intimate partner. Problems with family members or school were less frequently noted (<5 victims).



Child & Adolescent Mental Health Division

- **Ten (43%) of the victims had disclosed suicidal thoughts or intent or had a previous suicide attempt.**
- **Six (26%) of the victims had mental illness, most commonly depression. However, none of these victims were being treated for their illness.**

Data are from 23 National Violent Death Reporting System Autopsy/Police Records, 2017-2019.

Youth Suicide Fatality Rates

HAWAI'I VS. THE REST OF THE UNITED STATES

Average annual fatality rates (/100,000), 2017-2021

Age Group	US Rate	HI Rate	HI Rank
10-16 yrs.	4.4	2.5	46th Highest
17-19 yrs.	12.5	14.4	25th Highest
Total (10-19 yrs.)	6.8	6.0	39th Highest

Important Resources

FIVE ACTION STEPS FOR COMMUNICATING WITH SOMEONE WHO MAY BE SUICIDAL



- 1. Ask**
- 2. Be There**
- 3. Keep Them Safe**
- 4. Help Them Connect**
- 5. Follow Up**

The #BeThe1To campaign was created by the 988 Suicide & Crisis Lifeline, which is funded by the Substance Abuse and Mental Health Services Administration and administered by Vibrant Emotional Health.



CRISIS RESOURCES



Call, text, or chat for free 24/7 local support at 1-800-753-6879



Call 211, or text, chat, or email for over 4,000 local resources.