



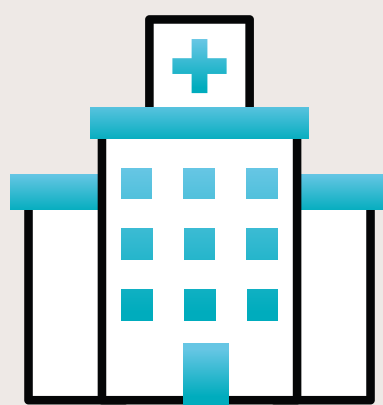
Child & Adolescent Mental Health Division

Suicide Awareness Data & Prevention Resources

Hawai'i Youth Data Overview



From 2016 to 2020, 47 Hawai'i youth aged 10 to 19 years died of suicide. It was the leading cause of death for this age group, surpassing traffic crashes (31 deaths), cancer (24), and unintentional poisonings (11).



For every youth (9 per year) who dies of suicide in Hawai'i, another 6 (55 per year) admit to the hospital, and 21 more (191 per year) are treated in emergency departments for nonfatal self-inflicted injuries each year.

The description of youth suicides differs considerably from suicide attempts in age, gender, and mechanism.

Description		Suicides	Suicide Attempts
Gender	Males	74%	27%
	Females	26%	73%
Age	10-14 yrs.	15%	26%
	15-16 yrs.	19%	34%
	17-19 yrs.	66%	40%
Mechanism	Hanging/Suffocation	83%	1%
	Firearms	8%	0%
	Drug Poisoning	2%	64%
	Cutting/Piercing	0%	21%

CONTRIBUTING FACTORS

FATAL YOUTH SUICIDES FROM 2015-2016

- Eight (35%) of the 23 victims had problems with their intimate partner, and 7 had familial conflicts prior to the suicide. Problems with school or legal problems were less frequently noted (<5 victims).



Child & Adolescent Mental Health Division

- **Most (61%, or 14) of the victims had disclosed suicidal thoughts or intent to another person.**
- **More than one-third (39%, or 9) of the victims had a mental illness, including 5 with depression. However, only 4 of these victims were being treated for their illnesses.**

Data are from 23 National Violent Death Reporting System Autopsy/Police Records, 2015-2016.

Youth Suicide Fatality Rates

HAWAI'I VS. THE REST OF THE UNITED STATES

Average annual fatality rates (/100,000), 2015-2019

Age Group	US Rate	HI Rate	HI Rank
10-16 yrs.	4.1	3.2	42nd Highest
17-19 yrs.	12.3	16.1	19th Highest
Total (10-19 yrs.)	6.6	6.9	31st Highest

Important Resources

FIVE ACTION STEPS FOR COMMUNICATING WITH SOMEONE WHO MAY BE SUICIDAL



- 1. Ask**
- 2. Be There**
- 3. Keep Them Safe**
- 4. Help Them Connect**
- 5. Follow Up**

The #BeThe1To campaign was created by the National Suicide Prevention Lifeline, which is funded by the Substance Abuse and Mental Health Services Administration and administered by Vibrant Emotional Health.



CRISIS RESOURCES



Call for free 24/7 support at 1-800-753-6879

CRISIS TEXT LINE |

Text ALOHA to 741741 and connect with a Crisis Counselor