

## **Appendix C: Environmental Justice Analysis**

# EJScreen Community Report

This report provides environmental and socioeconomic information for user-defined areas, and combines that data into environmental justice and supplemental indexes.

## Kanoelehua-Hill GS

3 miles Ring Centered at 19.704203,-155.062285

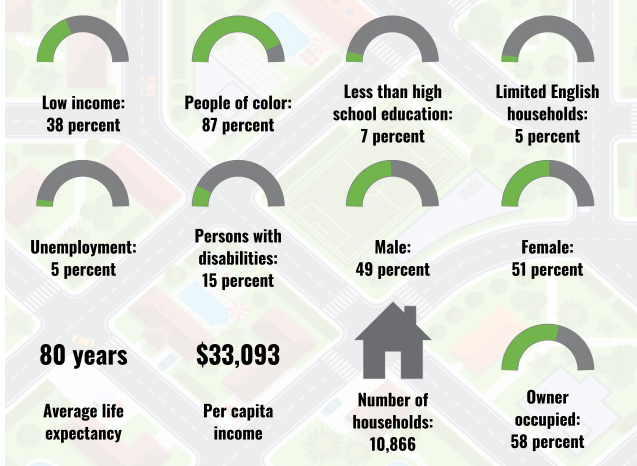
Population: 31,140

Area in square miles: 28.27

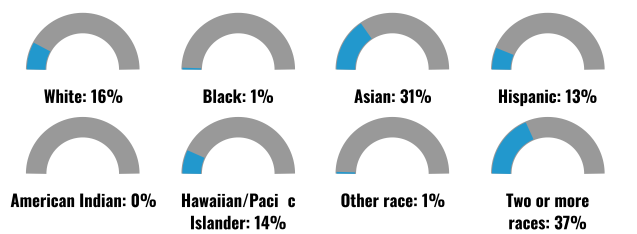


3, 2023  
Hill PP 3mi  
1:1,128  
0 0.01 0.03 0.05 mi  
0 0.02 0.04 0.08 km  
Eri Community Maps Contributor: © OpenStreetMap, Microsoft, Esri, HERE, Garmin, Swatchday, GeoTechnologies, Inc, Mapbox, USGS, EPA, US Census Bureau, USGA

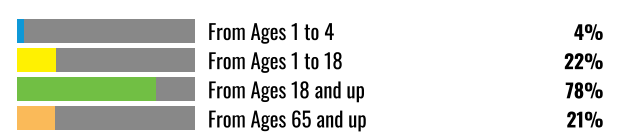
### COMMUNITY INFORMATION



### BREAKDOWN BY RACE



### BREAKDOWN BY AGE



### LIMITED ENGLISH SPEAKING BREAKDOWN



### LANGUAGES SPOKEN AT HOME

LANGUAGE	PERCENT
English	76%
Spanish	2%
Korean	1%
Chinese (including Mandarin, Cantonese)	1%
Tagalog (including Filipino)	2%
Other Asian and Pacific Island	12%
Other and Unspecified	6%
Total Non-English	24%

Notes: Numbers may not sum to totals due to rounding. Hispanic population can be of any race. Source: U.S. Census Bureau, American Community Survey (ACS) 2017-2021. Life expectancy data comes from the Centers for Disease Control.

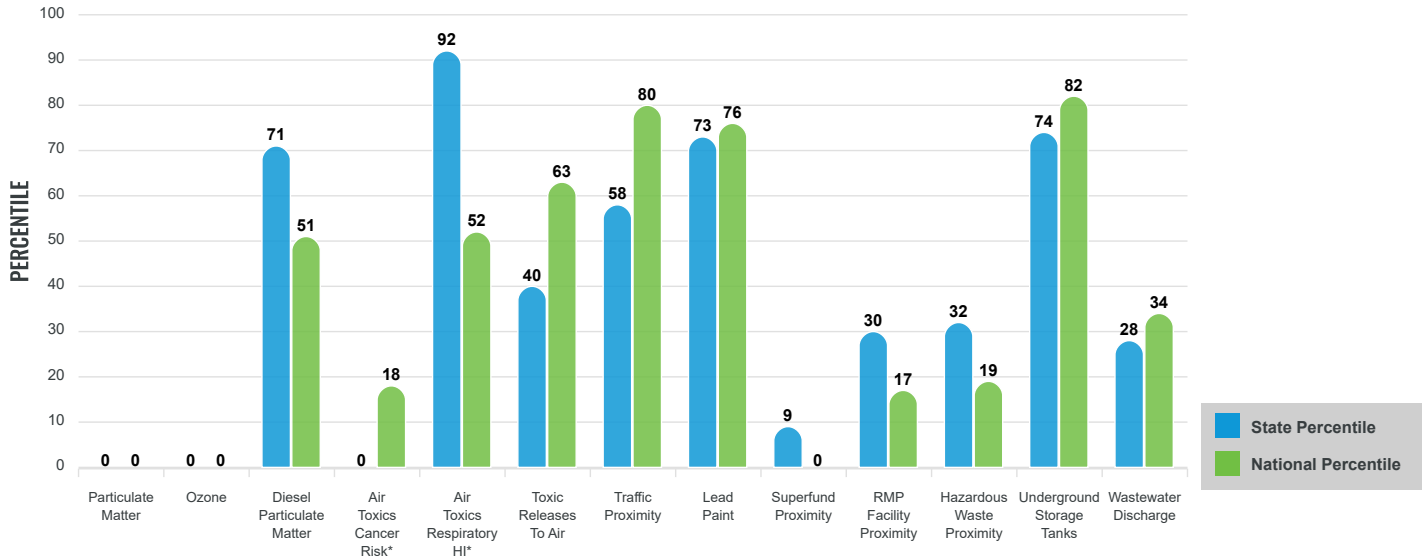
# Environmental Justice & Supplemental Indexes

The environmental justice and supplemental indexes are a combination of environmental and socioeconomic information. There are thirteen EJ indexes and supplemental indexes in EJScreen reflecting the 13 environmental indicators. The indexes for a selected area are compared to those for all other locations in the state or nation. For more information and calculation details on the EJ and supplemental indexes, please visit the [EJScreen website](#).

## EJ INDEXES

The EJ indexes help users screen for potential EJ concerns. To do this, the EJ index combines data on low income and people of color populations with a single environmental indicator.

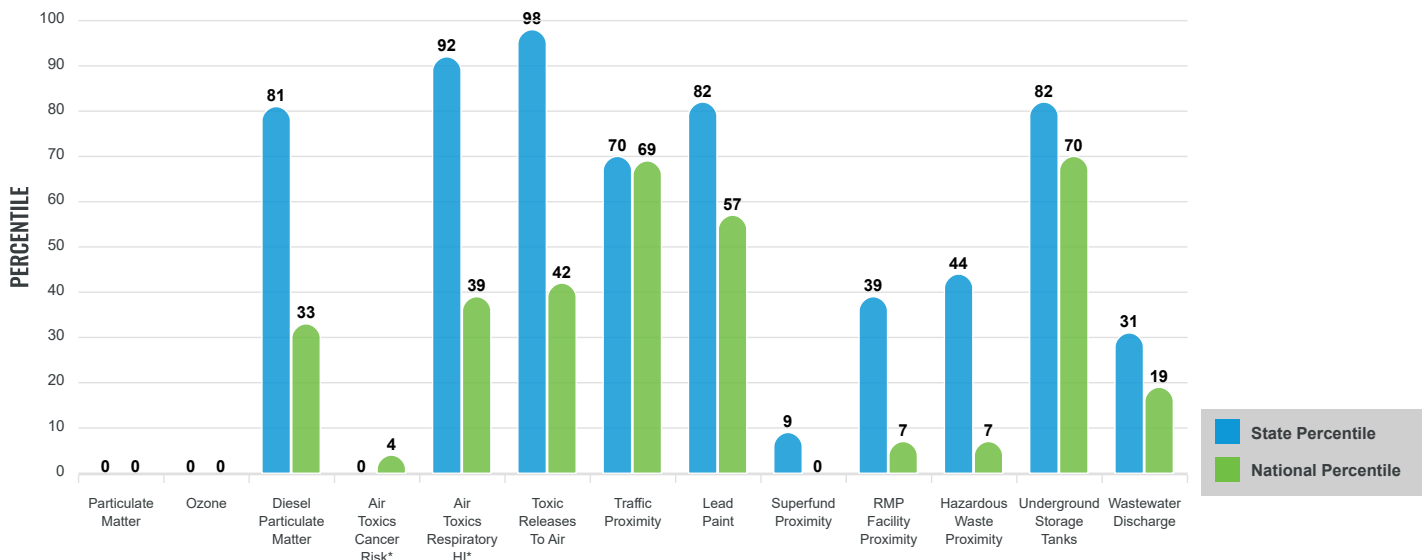
### EJ INDEXES FOR THE SELECTED LOCATION



## SUPPLEMENTAL INDEXES

The supplemental indexes offer a different perspective on community-level vulnerability. They combine data on percent low-income, percent linguistically isolated, percent less than high school education, percent unemployed, and low life expectancy with a single environmental indicator.

### SUPPLEMENTAL INDEXES FOR THE SELECTED LOCATION



These percentiles provide perspective on how the selected block group or buffer area compares to the entire state or nation.

Report for 3 miles Ring Centered at 19.704203,-155.062285

# EJScreen Environmental and Socioeconomic Indicators Data

SELECTED VARIABLES	VALUE	STATE AVERAGE	PERCENTILE IN STATE	USA AVERAGE	PERCENTILE IN USA
<b>POLLUTION AND SOURCES</b>					
Particulate Matter ( $\mu\text{g}/\text{m}^3$ )	N/A	N/A	N/A	8.08	N/A
Ozone (ppb)	N/A	N/A	N/A	61.6	N/A
Diesel Particulate Matter ( $\mu\text{g}/\text{m}^3$ )	0.106	0.111	63	0.261	18
Air Toxics Cancer Risk* (lifetime risk per million)	10	11	0	28	1
Air Toxics Respiratory HI*	0.23	0.14	59	0.31	4
Toxic Releases to Air	160	410	43	4,600	29
Traffic Proximity (daily traffic count/distance to road)	140	450	47	210	65
Lead Paint (% Pre-1960 Housing)	0.19	0.16	67	0.3	47
Superfund Proximity (site count/km distance)	0.0028	0.096	4	0.13	0
RMP Facility Proximity (facility count/km distance)	0.032	0.12	18	0.43	4
Hazardous Waste Proximity (facility count/km distance)	0.032	0.84	21	1.9	5
Underground Storage Tanks (count/km <sup>2</sup> )	2.8	3.4	68	3.9	65
Wastewater Discharge (toxicity-weighted concentration/m distance)	0.69	25	60	22	90
<b>SOCIOECONOMIC INDICATORS</b>					
Demographic Index	63%	48%	86	35%	85
Supplemental Demographic Index	16%	11%	83	14%	63
People of Color	87%	74%	60	39%	87
Low Income	38%	21%	85	31%	66
Unemployment Rate	8%	5%	78	6%	74
Limited English Speaking Households	5%	5%	67	5%	74
Less Than High School Education	7%	7%	63	12%	46
Under Age 5	4%	5%	51	6%	46
Over Age 64	21%	19%	57	17%	69
Low Life Expectancy	19%	16%	78	20%	46

\*Diesel particulate matter, air toxics cancer risk, and air toxics respiratory hazard index are from the EPA's Air Toxics Data Update, which is the Agency's ongoing, comprehensive evaluation of air toxics in the United States. This effort aims to prioritize air toxics, emission sources, and locations of interest for further study. It is important to remember that the air toxics data presented here provide broad estimates of health risks over geographic areas of the country, not definitive risks to specific individuals or locations. Cancer risks and hazard indices from the Air Toxics Data Update are reported to one significant figure and any additional significant figures here are due to rounding. More information on the Air Toxics Data Update can be found at: <https://www.epa.gov/haps/air-toxics-data-update>.

## Sites reporting to EPA within defined area:

Superfund	0
Hazardous Waste, Treatment, Storage, and Disposal Facilities	0
Water Dischargers	208
Air Pollution	10
Brownfields	2
Toxic Release Inventory	8

## Other community features within defined area:

Schools	20
Hospitals	3
Places of Worship	29

## Other environmental data:

Air Non-attainment	No
Impaired Waters	Yes

Selected location contains American Indian Reservation Lands*	No
Selected location contains a "Justice40 (CEJST)" disadvantaged community	Yes
Selected location contains an EPA IRA disadvantaged community	N/A

Report for 3 miles Ring Centered at 19.704203,-155.062285

# EJScreen Environmental and Socioeconomic Indicators Data

HEALTH INDICATORS					
INDICATOR	HEALTH VALUE	STATE AVERAGE	STATE PERCENTILE	US AVERAGE	US PERCENTILE
Low Life Expectancy	19%	16%	78	20%	46
Heart Disease	6.4	4.7	89	6.1	56
Asthma	9.7	8.8	81	10	46
Cancer	5.5	5.1	53	6.1	33
Persons with Disabilities	14.5%	11.2%	77	13.4%	62

CLIMATE INDICATORS					
INDICATOR	HEALTH VALUE	STATE AVERAGE	STATE PERCENTILE	US AVERAGE	US PERCENTILE
Flood Risk	61%	29%	85	12%	96
Wildfire Risk	0%	0%	0	14%	0

CRITICAL SERVICE GAPS					
INDICATOR	HEALTH VALUE	STATE AVERAGE	STATE PERCENTILE	US AVERAGE	US PERCENTILE
Broadband Internet	21%	11%	84	14%	75
Lack of Health Insurance	3%	4%	56	9%	24
Housing Burden	No	N/A	N/A	N/A	N/A
Transportation Access	Yes	N/A	N/A	N/A	N/A
Food Desert	Yes	N/A	N/A	N/A	N/A

Footnotes

Report for 3 miles Ring Centered at 19.704203,-155.062285

# EJScreen Community Report

This report provides environmental and socioeconomic information for user-defined areas, and combines that data into environmental justice and supplemental indexes.

## Kanoelehua-Hill GS

10 miles Ring Centered at 19.704203,-155.062285

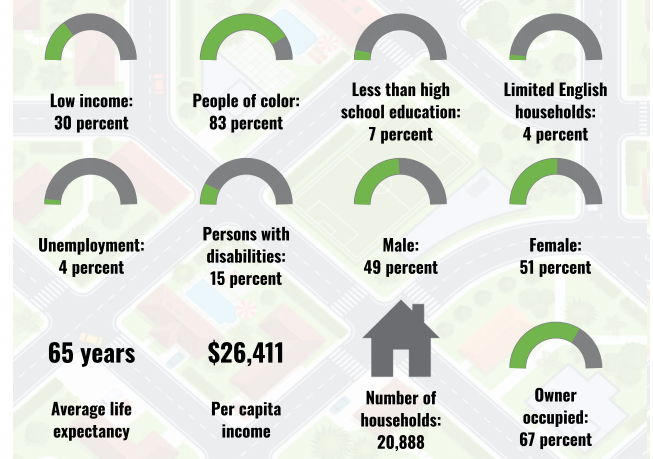
Population: 60,777

Area in square miles: 314.03

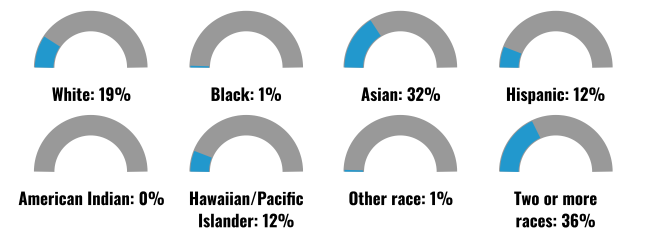


3/2023  
Hill PP 10mi  
1:36,112  
0 0.42 0.85 1.7 mi  
0 0.5 1 2 km  
Data: HERE, Garmin, Mapbox, GeoTechnologies, Inc, METI/NASA, USGS, EPA, US Census Bureau, USGS

### COMMUNITY INFORMATION



### BREAKDOWN BY RACE



### BREAKDOWN BY AGE



### LIMITED ENGLISH SPEAKING BREAKDOWN



### LANGUAGES SPOKEN AT HOME

LANGUAGE	PERCENT
English	75%
Spanish	2%
Chinese (including Mandarin, Cantonese)	1%
Vietnamese	1%
Tagalog (including Filipino)	2%
Other Asian and Pacific Island	13%
Other and Unspecified	5%
Total Non-English	25%

Notes: Numbers may not sum to totals due to rounding. Hispanic population can be of any race. Source: U.S. Census Bureau, American Community Survey (ACS) 2017-2021. Life expectancy data comes from the Centers for Disease Control.

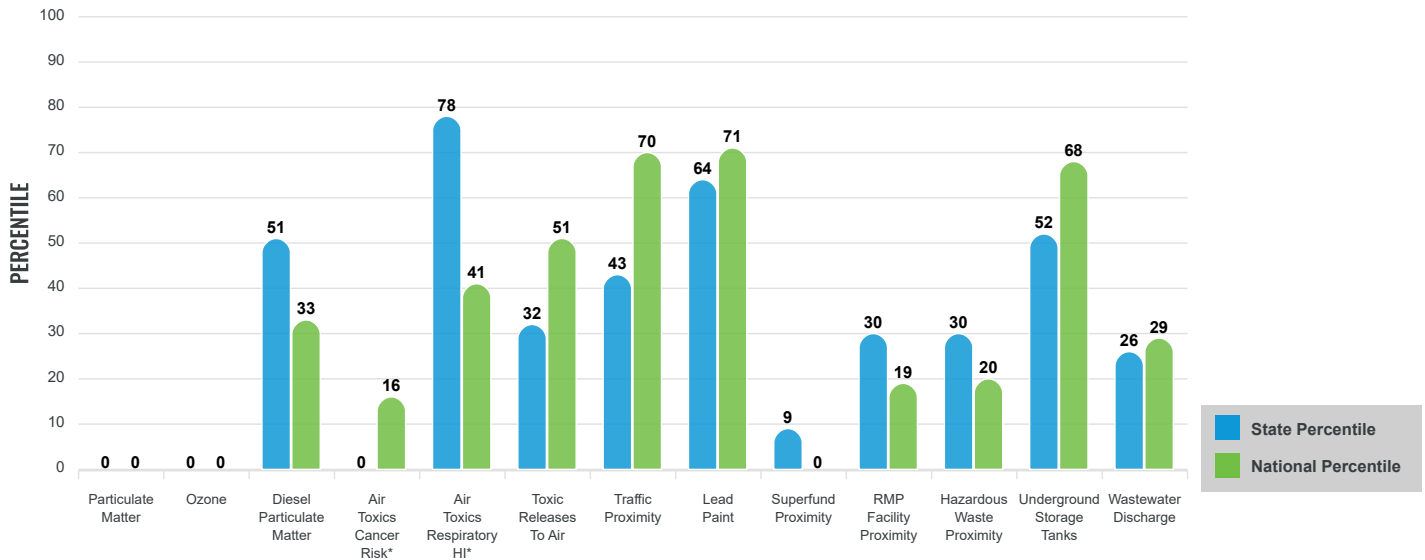
# Environmental Justice & Supplemental Indexes

The environmental justice and supplemental indexes are a combination of environmental and socioeconomic information. There are thirteen EJ indexes and supplemental indexes in EJScreen reflecting the 13 environmental indicators. The indexes for a selected area are compared to those for all other locations in the state or nation. For more information and calculation details on the EJ and supplemental indexes, please visit the [EJScreen website](#).

## EJ INDEXES

The EJ indexes help users screen for potential EJ concerns. To do this, the EJ index combines data on low income and people of color populations with a single environmental indicator.

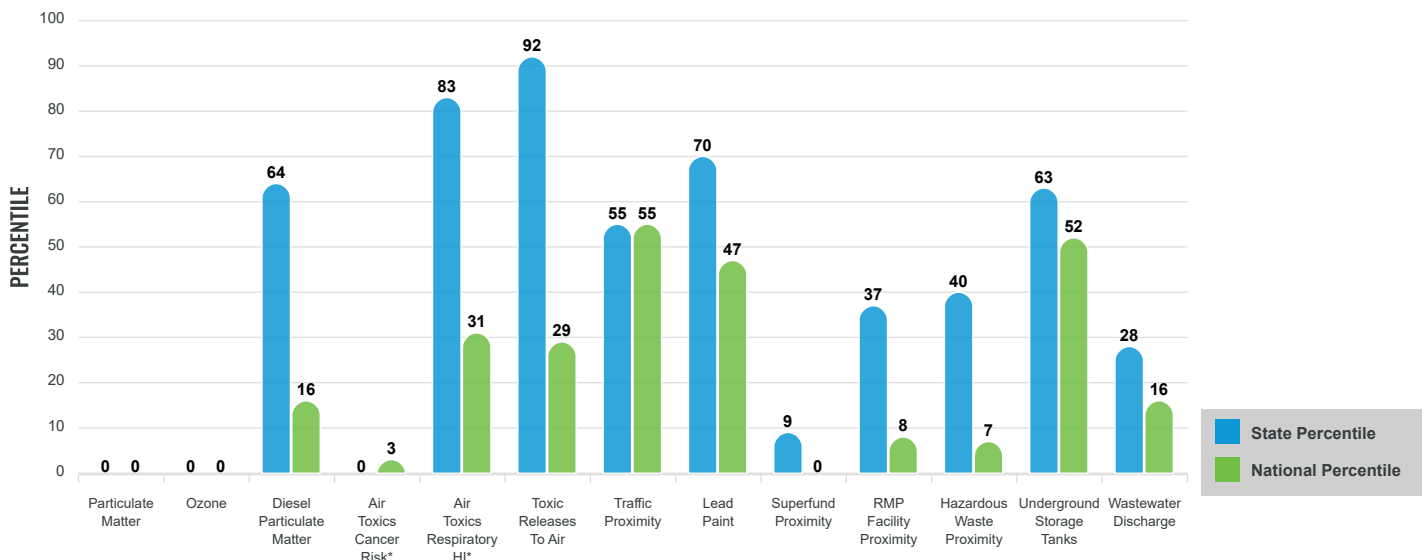
### EJ INDEXES FOR THE SELECTED LOCATION



## SUPPLEMENTAL INDEXES

The supplemental indexes offer a different perspective on community-level vulnerability. They combine data on percent low-income, percent linguistically isolated, percent less than high school education, percent unemployed, and low life expectancy with a single environmental indicator.

### SUPPLEMENTAL INDEXES FOR THE SELECTED LOCATION



These percentiles provide perspective on how the selected block group or buffer area compares to the entire state or nation.

Report for 10 miles Ring Centered at 19.704203,-155.062285

# EJScreen Environmental and Socioeconomic Indicators Data

SELECTED VARIABLES	VALUE	STATE AVERAGE	PERCENTILE IN STATE	USA AVERAGE	PERCENTILE IN USA
<b>POLLUTION AND SOURCES</b>					
Particulate Matter ( $\mu\text{g}/\text{m}^3$ )	N/A	N/A	N/A	8.08	N/A
Ozone (ppb)	N/A	N/A	N/A	61.6	N/A
Diesel Particulate Matter ( $\mu\text{g}/\text{m}^3$ )	0.0665	0.111	47	0.261	7
Air Toxics Cancer Risk* (lifetime risk per million)	10	11	0	28	1
Air Toxics Respiratory HI*	0.2	0.14	59	0.31	4
Toxic Releases to Air	96	410	34	4,600	23
Traffic Proximity (daily traffic count/distance to road)	85	450	38	210	52
Lead Paint (% Pre-1960 Housing)	0.18	0.16	66	0.3	45
Superfund Proximity (site count/km distance)	0.0028	0.096	3	0.13	0
RMP Facility Proximity (facility count/km distance)	0.036	0.12	21	0.43	5
Hazardous Waste Proximity (facility count/km distance)	0.036	0.84	23	1.9	6
Underground Storage Tanks (count/km <sup>2</sup> )	1.4	3.4	56	3.9	53
Wastewater Discharge (toxicity-weighted concentration/m distance)	0.38	25	59	22	88
<b>SOCIOECONOMIC INDICATORS</b>					
Demographic Index	57%	48%	74	35%	80
Supplemental Demographic Index	13%	11%	74	14%	53
People of Color	83%	74%	51	39%	84
Low Income	30%	21%	77	31%	56
Unemployment Rate	6%	5%	71	6%	67
Limited English Speaking Households	4%	5%	62	5%	71
Less Than High School Education	7%	7%	61	12%	44
Under Age 5	5%	5%	53	6%	48
Over Age 64	21%	19%	58	17%	70
Low Life Expectancy	18%	16%	71	20%	38

\*Diesel particulate matter, air toxics cancer risk, and air toxics respiratory hazard index are from the EPA's Air Toxics Data Update, which is the Agency's ongoing, comprehensive evaluation of air toxics in the United States. This effort aims to prioritize air toxics, emission sources, and locations of interest for further study. It is important to remember that the air toxics data presented here provide broad estimates of health risks over geographic areas of the country, not definitive risks to specific individuals or locations. Cancer risks and hazard indices from the Air Toxics Data Update are reported to one significant figure and any additional significant figures here are due to rounding. More information on the Air Toxics Data Update can be found at: <https://www.epa.gov/haps/air-toxics-data-update>.

## Sites reporting to EPA within defined area:

Superfund .....	0
Hazardous Waste, Treatment, Storage, and Disposal Facilities .....	0
Water Dischargers .....	365
Air Pollution .....	15
Brownfields .....	2
Toxic Release Inventory .....	11

## Other community features within defined area:

Schools .....	31
Hospitals .....	5
Places of Worship .....	35

## Other environmental data:

Air Non-attainment .....	No
Impaired Waters .....	Yes

Selected location contains American Indian Reservation Lands* .....	No
Selected location contains a "Justice40 (CEJST)" disadvantaged community .....	Yes
Selected location contains an EPA IRA disadvantaged community .....	N/A

Report for 10 miles Ring Centered at 19.704203,-155.062285



# EJScreen Environmental and Socioeconomic Indicators Data

## HEALTH INDICATORS

INDICATOR	HEALTH VALUE	STATE AVERAGE	STATE PERCENTILE	US AVERAGE	US PERCENTILE
Low Life Expectancy	18%	16%	71	20%	38
Heart Disease	6	4.7	86	6.1	50
Asthma	9.3	8.8	69	10	30
Cancer	5.6	5.1	57	6.1	35
Persons with Disabilities	14.5%	11.2%	77	13.4%	62

## CLIMATE INDICATORS

INDICATOR	HEALTH VALUE	STATE AVERAGE	STATE PERCENTILE	US AVERAGE	US PERCENTILE
Flood Risk	52%	29%	80	12%	96
Wildfire Risk	0%	0%	0	14%	0

## CRITICAL SERVICE GAPS

INDICATOR	HEALTH VALUE	STATE AVERAGE	STATE PERCENTILE	US AVERAGE	US PERCENTILE
Broadband Internet	18%	11%	78	14%	69
Lack of Health Insurance	3%	4%	53	9%	22
Housing Burden	No	N/A	N/A	N/A	N/A
Transportation Access	Yes	N/A	N/A	N/A	N/A
Food Desert	Yes	N/A	N/A	N/A	N/A

Footnotes

Report for 10 miles Ring Centered at 19.704203,-155.062285



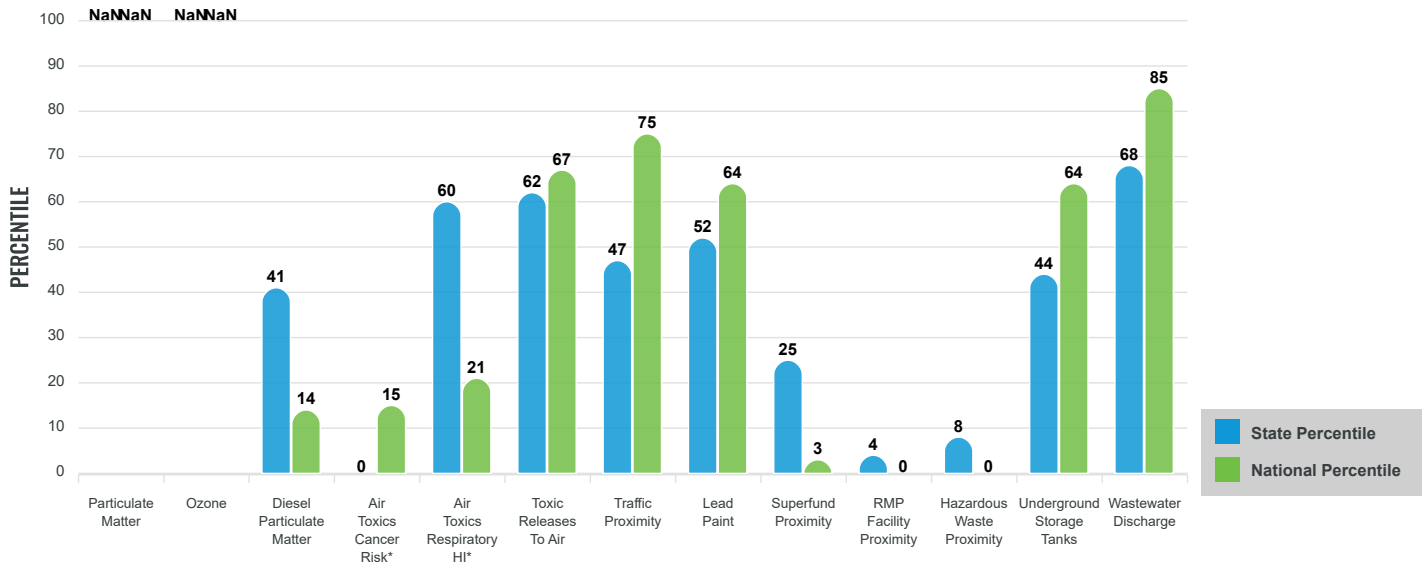
# Environmental Justice & Supplemental Indexes

The environmental justice and supplemental indexes are a combination of environmental and socioeconomic information. There are thirteen EJ indexes and supplemental indexes in EJScreen reflecting the 13 environmental indicators. The indexes for a selected area are compared to those for all other locations in the state or nation. For more information and calculation details on the EJ and supplemental indexes, please visit the [EJScreen website](#).

## EJ INDEXES

The EJ indexes help users screen for potential EJ concerns. To do this, the EJ index combines data on low income and people of color populations with a single environmental indicator.

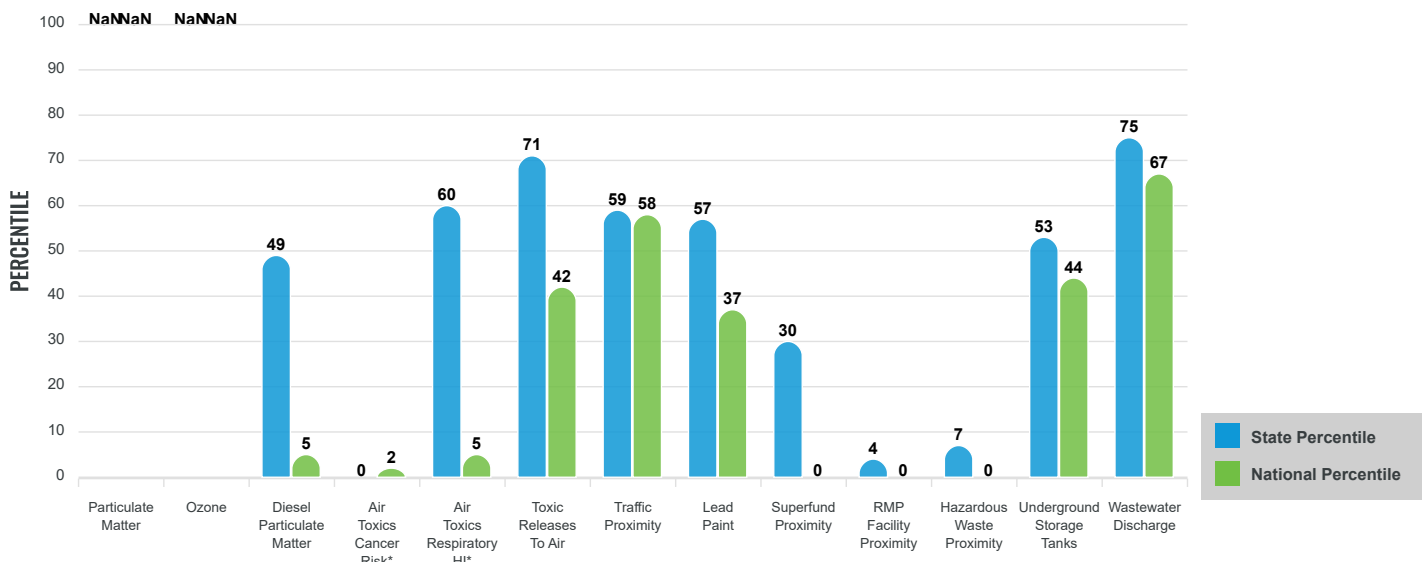
### EJ INDEXES FOR THE SELECTED LOCATION



## SUPPLEMENTAL INDEXES

The supplemental indexes offer a different perspective on community-level vulnerability. They combine data on percent low-income, percent linguistically isolated, percent less than high school education, percent unemployed, and low life expectancy with a single environmental indicator.

### SUPPLEMENTAL INDEXES FOR THE SELECTED LOCATION



These percentiles provide perspective on how the selected block group or buffer area compares to the entire state or nation.

Report for 3 miles Ring Centered at 20.896183,-156.463671

# EJScreen Environmental and Socioeconomic Indicators Data

SELECTED VARIABLES	VALUE	STATE AVERAGE	PERCENTILE IN STATE	USA AVERAGE	PERCENTILE IN USA
<b>POLLUTION AND SOURCES</b>					
Particulate Matter ( $\mu\text{g}/\text{m}^3$ )	N/A	N/A	N/A	8.08	N/A
Ozone (ppb)	N/A	N/A	N/A	61.6	N/A
Diesel Particulate Matter ( $\mu\text{g}/\text{m}^3$ )	0.0491	0.111	33	0.261	4
Air Toxics Cancer Risk* (lifetime risk per million)	10	11	0	28	1
Air Toxics Respiratory HI*	0.13	0.14	14	0.31	1
Toxic Releases to Air	400	410	68	4,600	42
Traffic Proximity (daily traffic count/distance to road)	140	450	47	210	65
Lead Paint (% Pre-1960 Housing)	0.17	0.16	65	0.3	45
Superfund Proximity (site count/km distance)	0.006	0.096	19	0.13	1
RMP Facility Proximity (facility count/km distance)	0.0073	0.12	2	0.43	0
Hazardous Waste Proximity (facility count/km distance)	0.0069	0.84	5	1.9	0
Underground Storage Tanks (count/km <sup>2</sup> )	1.3	3.4	55	3.9	52
Wastewater Discharge (toxicity-weighted concentration/m distance)	120	25	94	22	99
<b>SOCIOECONOMIC INDICATORS</b>					
Demographic Index	54%	48%	66	35%	78
Supplemental Demographic Index	12%	11%	67	14%	46
People of Color	88%	74%	64	39%	88
Low Income	19%	21%	52	31%	35
Unemployment Rate	5%	5%	65	6%	61
Limited English Speaking Households	7%	5%	76	5%	81
Less Than High School Education	11%	7%	80	12%	60
Under Age 5	4%	5%	49	6%	44
Over Age 64	19%	19%	48	17%	62
Low Life Expectancy	17%	16%	58	20%	26

\*Diesel particulate matter, air toxics cancer risk, and air toxics respiratory hazard index are from the EPA's Air Toxics Data Update, which is the Agency's ongoing, comprehensive evaluation of air toxics in the United States. This effort aims to prioritize air toxics, emission sources, and locations of interest for further study. It is important to remember that the air toxics data presented here provide broad estimates of health risks over geographic areas of the country, not definitive risks to specific individuals or locations. Cancer risks and hazard indices from the Air Toxics Data Update are reported to one significant figure and any additional significant figures here are due to rounding. More information on the Air Toxics Data Update can be found at: <https://www.epa.gov/haps/air-toxics-data-update>.

## Sites reporting to EPA within defined area:

Superfund .....	0
Hazardous Waste, Treatment, Storage, and Disposal Facilities .....	0
Water Dischargers .....	183
Air Pollution .....	6
Brownfields .....	0
Toxic Release Inventory .....	6

## Other community features within defined area:

Schools .....	15
Hospitals .....	4
Places of Worship .....	17

## Other environmental data:

Air Non-attainment .....	No
Impaired Waters .....	Yes

Selected location contains American Indian Reservation Lands* .....	No
Selected location contains a "Justice40 (CEJST)" disadvantaged community .....	Yes
Selected location contains an EPA IRA disadvantaged community .....	N/A

Report for 3 miles Ring Centered at 20.896183,-156.463671

# EJScreen Environmental and Socioeconomic Indicators Data

## HEALTH INDICATORS

INDICATOR	HEALTH VALUE	STATE AVERAGE	STATE PERCENTILE	US AVERAGE	US PERCENTILE
Low Life Expectancy	17%	16%	58	20%	26
Heart Disease	4.9	4.7	57	6.1	26
Asthma	8.4	8.8	44	10	11
Cancer	4.7	5.1	31	6.1	21
Persons with Disabilities	10%	11.2%	40	13.4%	32

## CLIMATE INDICATORS

INDICATOR	HEALTH VALUE	STATE AVERAGE	STATE PERCENTILE	US AVERAGE	US PERCENTILE
Flood Risk	26%	29%	57	12%	89
Wildfire Risk	0%	0%	0	14%	0

## CRITICAL SERVICE GAPS

INDICATOR	HEALTH VALUE	STATE AVERAGE	STATE PERCENTILE	US AVERAGE	US PERCENTILE
Broadband Internet	18%	11%	79	14%	70
Lack of Health Insurance	6%	4%	78	9%	41
Housing Burden	Yes	N/A	N/A	N/A	N/A
Transportation Access	Yes	N/A	N/A	N/A	N/A
Food Desert	No	N/A	N/A	N/A	N/A

Footnotes

Report for 3 miles Ring Centered at 20.896183,-156.463671

# EJScreen Community Report

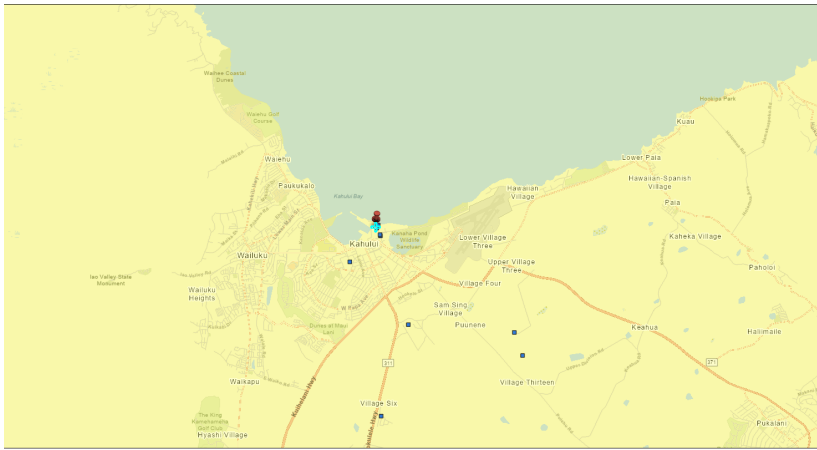
This report provides environmental and socioeconomic information for user-defined areas, and combines that data into environmental justice and supplemental indexes.

## Kahului GS

10 miles Ring Centered at 20.896183,-156.463671

Population: 92,070

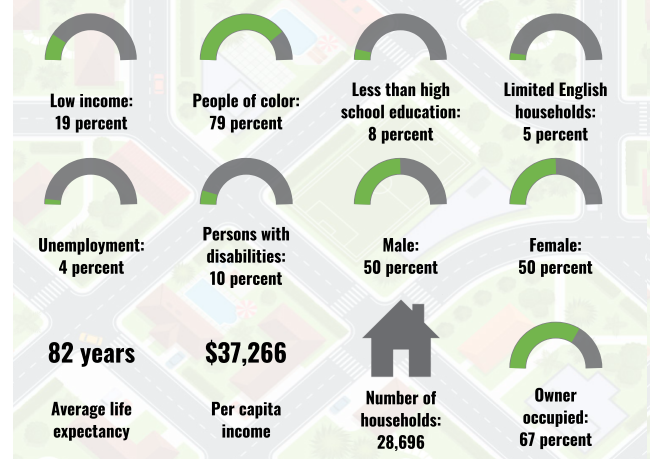
Area in square miles: 314.03



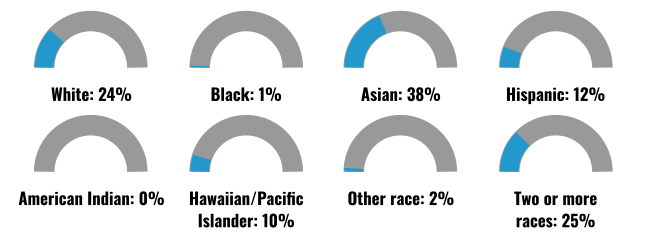
© 2023  
Kahului 10mi  
Release Inventory  
50,000 - 1,000,000 lb  
Air pollution

1:72,224  
0 0.75 1.5 3 mi  
0 1.25 2.5 5 km  
Esri, HERE, Garmin, SwireGraph, GeoBrowsers, Inc., METI/NASA, USGS, EPA, USDA

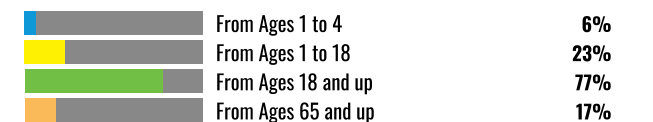
### COMMUNITY INFORMATION



### BREAKDOWN BY RACE



### BREAKDOWN BY AGE



### LIMITED ENGLISH SPEAKING BREAKDOWN



### LANGUAGES SPOKEN AT HOME

LANGUAGE	PERCENT
English	75%
Spanish	3%
Korean	1%
Tagalog (including Filipino)	7%
Other Asian and Pacific Island	12%
Total Non-English	25%

Notes: Numbers may not sum to totals due to rounding. Hispanic population can be of any race. Source: U.S. Census Bureau, American Community Survey (ACS) 2017-2021. Life expectancy data comes from the Centers for Disease Control.

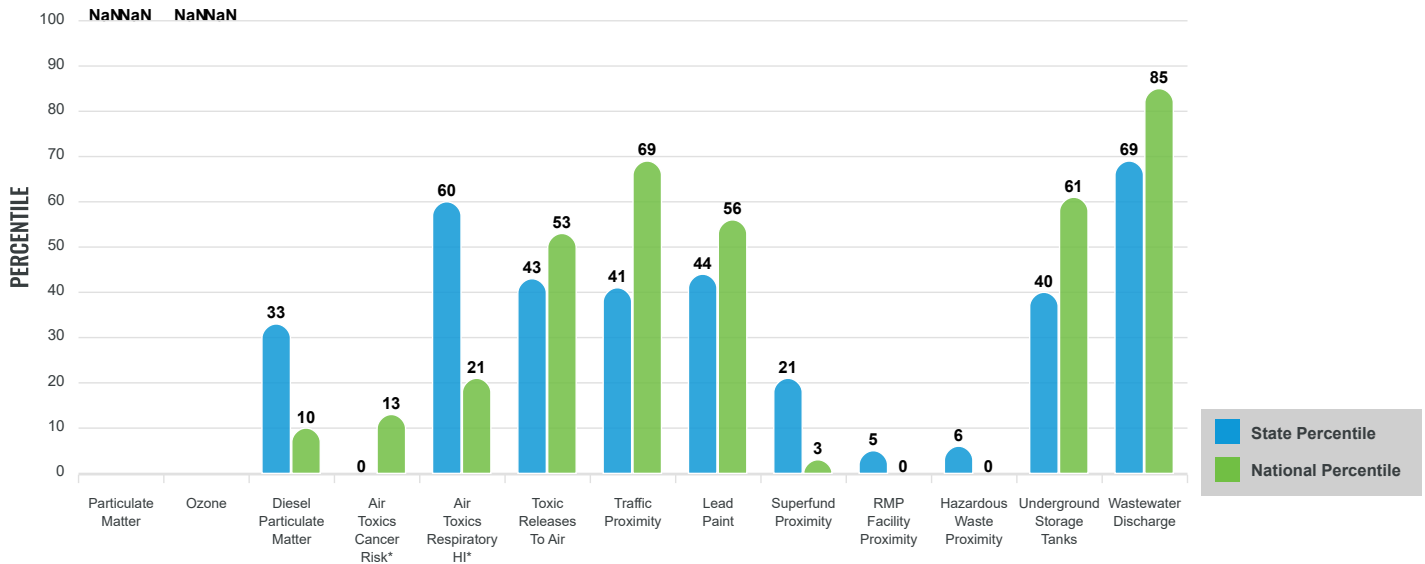
# Environmental Justice & Supplemental Indexes

The environmental justice and supplemental indexes are a combination of environmental and socioeconomic information. There are thirteen EJ indexes and supplemental indexes in EJScreen reflecting the 13 environmental indicators. The indexes for a selected area are compared to those for all other locations in the state or nation. For more information and calculation details on the EJ and supplemental indexes, please visit the [EJScreen website](#).

## EJ INDEXES

The EJ indexes help users screen for potential EJ concerns. To do this, the EJ index combines data on low income and people of color populations with a single environmental indicator.

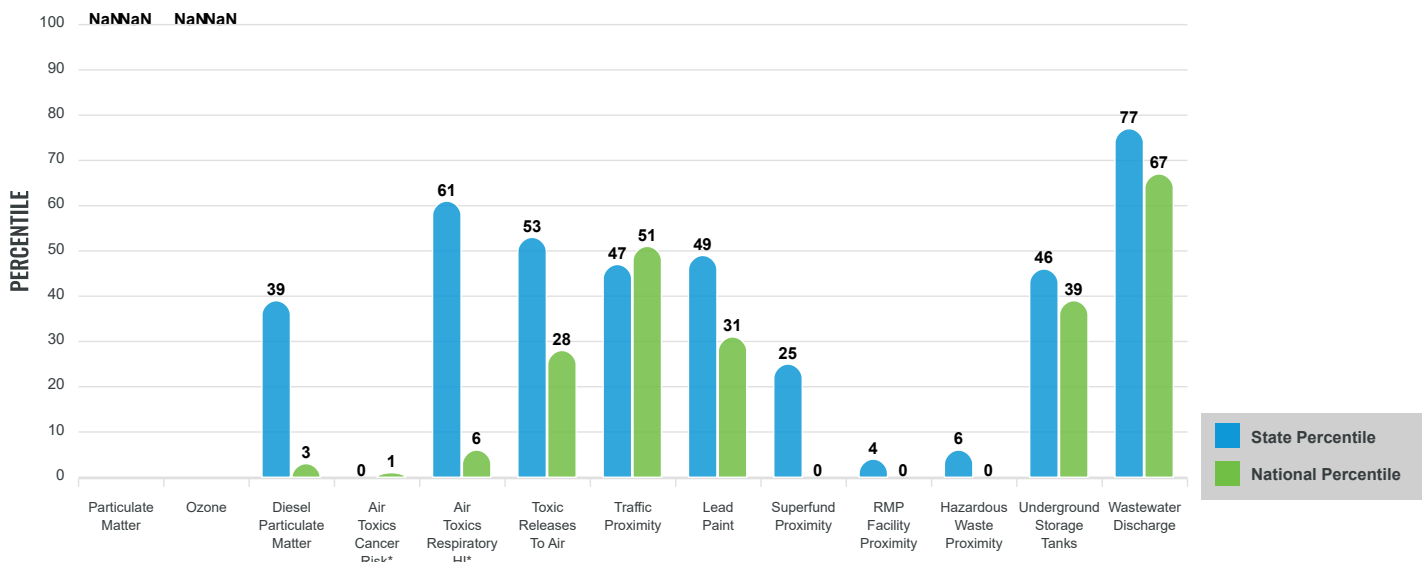
### EJ INDEXES FOR THE SELECTED LOCATION



## SUPPLEMENTAL INDEXES

The supplemental indexes offer a different perspective on community-level vulnerability. They combine data on percent low-income, percent linguistically isolated, percent less than high school education, percent unemployed, and low life expectancy with a single environmental indicator.

### SUPPLEMENTAL INDEXES FOR THE SELECTED LOCATION



These percentiles provide perspective on how the selected block group or buffer area compares to the entire state or nation.

Report for 10 miles Ring Centered at 20.896183,-156.463671

# EJScreen Environmental and Socioeconomic Indicators Data

SELECTED VARIABLES	VALUE	STATE AVERAGE	PERCENTILE IN STATE	USA AVERAGE	PERCENTILE IN USA
<b>POLLUTION AND SOURCES</b>					
Particulate Matter ( $\mu\text{g}/\text{m}^3$ )	N/A	N/A	N/A	8.08	N/A
Ozone (ppb)	N/A	N/A	N/A	61.6	N/A
Diesel Particulate Matter ( $\mu\text{g}/\text{m}^3$ )	0.0394	0.111	27	0.261	2
Air Toxics Cancer Risk* (lifetime risk per million)	10	11	0	28	1
Air Toxics Respiratory HI*	0.14	0.14	14	0.31	1
Toxic Releases to Air	230	410	55	4,600	34
Traffic Proximity (daily traffic count/distance to road)	110	450	42	210	59
Lead Paint (% Pre-1960 Housing)	0.13	0.16	57	0.3	39
Superfund Proximity (site count/km distance)	0.0059	0.096	17	0.13	1
RMP Facility Proximity (facility count/km distance)	0.0075	0.12	4	0.43	0
Hazardous Waste Proximity (facility count/km distance)	0.0067	0.84	4	1.9	0
Underground Storage Tanks (count/km <sup>2</sup> )	1	3.4	51	3.9	48
Wastewater Discharge (toxicity-weighted concentration/m distance)	95	25	92	22	99
<b>SOCIOECONOMIC INDICATORS</b>					
Demographic Index	49%	48%	47	35%	73
Supplemental Demographic Index	11%	11%	56	14%	39
People of Color	78%	74%	44	39%	82
Low Income	19%	21%	53	31%	36
Unemployment Rate	5%	5%	63	6%	60
Limited English Speaking Households	5%	5%	67	5%	75
Less Than High School Education	8%	7%	68	12%	51
Under Age 5	6%	5%	60	6%	57
Over Age 64	17%	19%	42	17%	56
Low Life Expectancy	16%	16%	46	20%	19

\*Diesel particulate matter, air toxics cancer risk, and air toxics respiratory hazard index are from the EPA's Air Toxics Data Update, which is the Agency's ongoing, comprehensive evaluation of air toxics in the United States. This effort aims to prioritize air toxics, emission sources, and locations of interest for further study. It is important to remember that the air toxics data presented here provide broad estimates of health risks over geographic areas of the country, not definitive risks to specific individuals or locations. Cancer risks and hazard indices from the Air Toxics Data Update are reported to one significant figure and any additional significant figures here are due to rounding. More information on the Air Toxics Data Update can be found at: <https://www.epa.gov/haps/air-toxics-data-update>.

## Sites reporting to EPA within defined area:

Superfund .....	0
Hazardous Waste, Treatment, Storage, and Disposal Facilities .....	0
Water Dischargers .....	338
Air Pollution .....	11
Brownfields .....	0
Toxic Release Inventory .....	9

## Other community features within defined area:

Schools .....	24
Hospitals .....	4
Places of Worship .....	22

## Other environmental data:

Air Non-attainment .....	No
Impaired Waters .....	Yes

Selected location contains American Indian Reservation Lands* .....	No
Selected location contains a "Justice40 (CEJST)" disadvantaged community .....	Yes
Selected location contains an EPA IRA disadvantaged community .....	N/A

Report for 10 miles Ring Centered at 20.896183,-156.463671



# EJScreen Environmental and Socioeconomic Indicators Data

HEALTH INDICATORS					
INDICATOR	HEALTH VALUE	STATE AVERAGE	STATE PERCENTILE	US AVERAGE	US PERCENTILE
Low Life Expectancy	16%	16%	46	20%	19
Heart Disease	4.7	4.7	42	6.1	21
Asthma	8.7	8.8	51	10	17
Cancer	4.8	5.1	32	6.1	22
Persons with Disabilities	9.1%	11.2%	30	13.4%	26

CLIMATE INDICATORS					
INDICATOR	HEALTH VALUE	STATE AVERAGE	STATE PERCENTILE	US AVERAGE	US PERCENTILE
Flood Risk	23%	29%	54	12%	88
Wildfire Risk	0%	0%	0	14%	0

CRITICAL SERVICE GAPS					
INDICATOR	HEALTH VALUE	STATE AVERAGE	STATE PERCENTILE	US AVERAGE	US PERCENTILE
Broadband Internet	14%	11%	66	14%	58
Lack of Health Insurance	5%	4%	77	9%	39
Housing Burden	Yes	N/A	N/A	N/A	N/A
Transportation Access	Yes	N/A	N/A	N/A	N/A
Food Desert	No	N/A	N/A	N/A	N/A

Footnotes

Report for 10 miles Ring Centered at 20.896183,-156.463671

# EJScreen Community Report

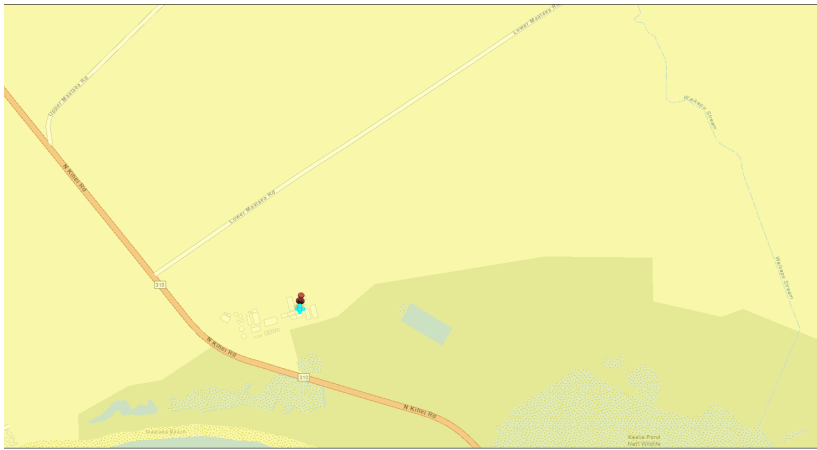
This report provides environmental and socioeconomic information for user-defined areas, and combines that data into environmental justice and supplemental indexes.

## Maalaea GS

3 miles Ring Centered at 20.801374,-156.492682

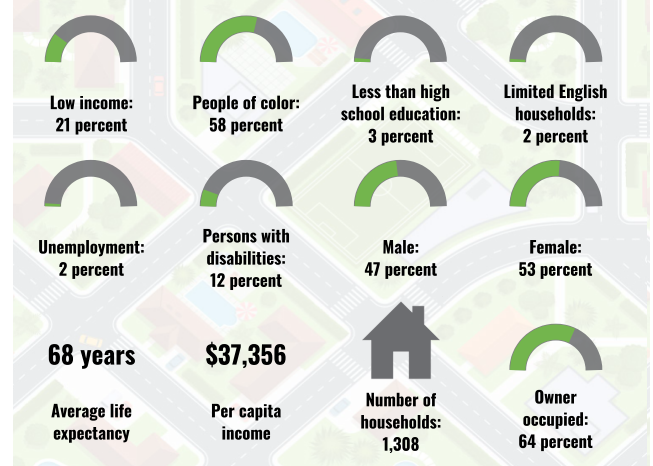
Population: 3,332

Area in square miles: 28.27

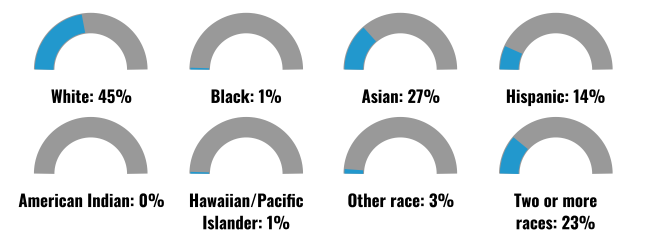


© 2023  
 Maalaea 3mi  
 Release Inventory  
 50,000 - 1,000,000 lb  
 Air pollution  
 Esri, Community Maps, contributors, © OpenStreetMap contributors, Esri, HERE, Garmin, Swatch, GeoTechnologies, Inc., IGH/THUSA, USGS, EPA, US Census Bureau, USGS

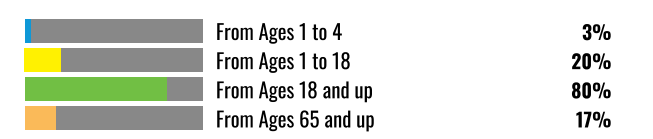
### COMMUNITY INFORMATION



### BREAKDOWN BY RACE



### BREAKDOWN BY AGE



### LIMITED ENGLISH SPEAKING BREAKDOWN



### LANGUAGES SPOKEN AT HOME

LANGUAGE	PERCENT
English	85%
Spanish	1%
Chinese (including Mandarin, Cantonese)	1%
Tagalog (including Filipino)	7%
Other Asian and Pacific Island	4%
Other and Unspecified	1%
Total Non-English	15%

Notes: Numbers may not sum to totals due to rounding. Hispanic population can be of any race. Source: U.S. Census Bureau, American Community Survey (ACS) 2017-2021. Life expectancy data comes from the Centers for Disease Control.

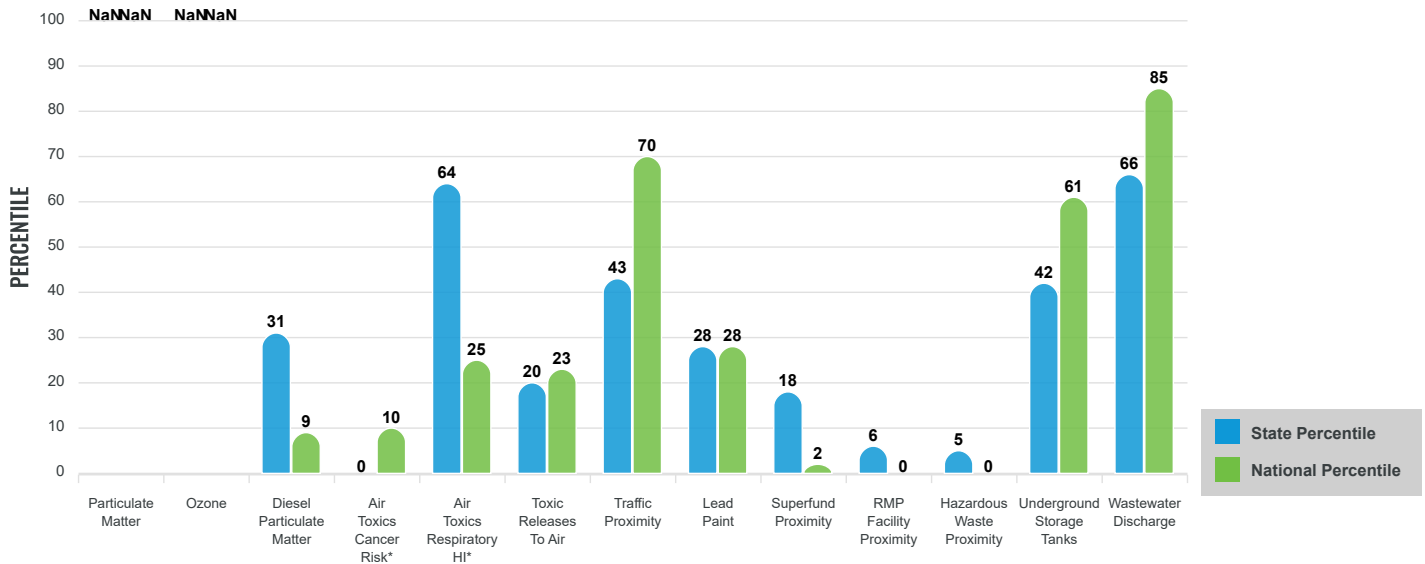
# Environmental Justice & Supplemental Indexes

The environmental justice and supplemental indexes are a combination of environmental and socioeconomic information. There are thirteen EJ indexes and supplemental indexes in EJScreen reflecting the 13 environmental indicators. The indexes for a selected area are compared to those for all other locations in the state or nation. For more information and calculation details on the EJ and supplemental indexes, please visit the [EJScreen website](#).

## EJ INDEXES

The EJ indexes help users screen for potential EJ concerns. To do this, the EJ index combines data on low income and people of color populations with a single environmental indicator.

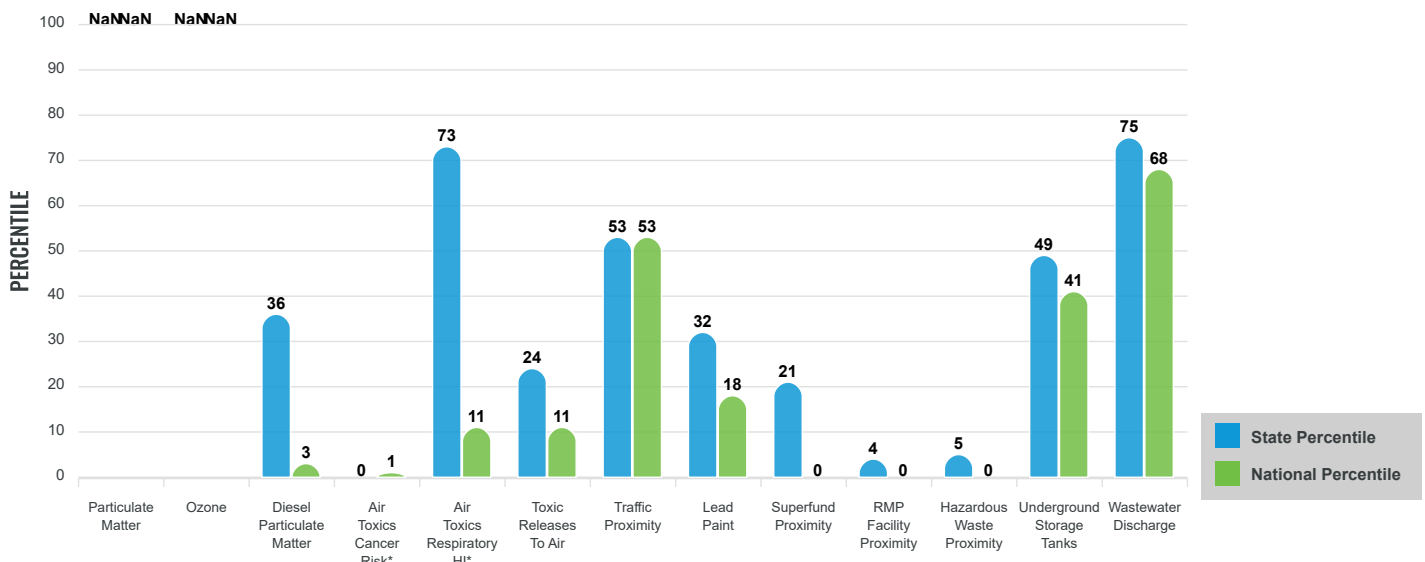
### EJ INDEXES FOR THE SELECTED LOCATION



## SUPPLEMENTAL INDEXES

The supplemental indexes offer a different perspective on community-level vulnerability. They combine data on percent low-income, percent linguistically isolated, percent less than high school education, percent unemployed, and low life expectancy with a single environmental indicator.

### SUPPLEMENTAL INDEXES FOR THE SELECTED LOCATION



These percentiles provide perspective on how the selected block group or buffer area compares to the entire state or nation.

Report for 3 miles Ring Centered at 20.801374,-156.492682

# EJScreen Environmental and Socioeconomic Indicators Data

SELECTED VARIABLES	VALUE	STATE AVERAGE	PERCENTILE IN STATE	USA AVERAGE	PERCENTILE IN USA
<b>POLLUTION AND SOURCES</b>					
Particulate Matter ( $\mu\text{g}/\text{m}^3$ )	N/A	N/A	N/A	8.08	N/A
Ozone (ppb)	N/A	N/A	N/A	61.6	N/A
Diesel Particulate Matter ( $\mu\text{g}/\text{m}^3$ )	0.0447	0.111	30	0.261	3
Air Toxics Cancer Risk* (lifetime risk per million)	10	11	0	28	1
Air Toxics Respiratory HI*	0.19	0.14	14	0.31	1
Toxic Releases to Air	29	410	19	4,600	14
Traffic Proximity (daily traffic count/distance to road)	150	450	49	210	67
Lead Paint (% Pre-1960 Housing)	0.015	0.16	30	0.3	17
Superfund Proximity (site count/km distance)	0.0058	0.096	17	0.13	1
RMP Facility Proximity (facility count/km distance)	0.0078	0.12	4	0.43	0
Hazardous Waste Proximity (facility count/km distance)	0.0066	0.84	4	1.9	0
Underground Storage Tanks (count/km <sup>2</sup> )	0.86	3.4	47	3.9	45
Wastewater Discharge (toxicity-weighted concentration/m distance)	36	25	82	22	98
<b>SOCIOECONOMIC INDICATORS</b>					
Demographic Index	40%	48%	22	35%	64
Supplemental Demographic Index	9%	11%	47	14%	31
People of Color	58%	74%	19	39%	71
Low Income	21%	21%	58	31%	40
Unemployment Rate	3%	5%	47	6%	44
Limited English Speaking Households	3%	5%	55	5%	67
Less Than High School Education	3%	7%	38	12%	24
Under Age 5	3%	5%	33	6%	29
Over Age 64	17%	19%	40	17%	54
Low Life Expectancy	16%	16%	49	20%	20

\*Diesel particulate matter, air toxics cancer risk, and air toxics respiratory hazard index are from the EPA's Air Toxics Data Update, which is the Agency's ongoing, comprehensive evaluation of air toxics in the United States. This effort aims to prioritize air toxics, emission sources, and locations of interest for further study. It is important to remember that the air toxics data presented here provide broad estimates of health risks over geographic areas of the country, not definitive risks to specific individuals or locations. Cancer risks and hazard indices from the Air Toxics Data Update are reported to one significant figure and any additional significant figures here are due to rounding. More information on the Air Toxics Data Update can be found at: <https://www.epa.gov/haps/air-toxics-data-update>.

## Sites reporting to EPA within defined area:

Superfund .....	0
Hazardous Waste, Treatment, Storage, and Disposal Facilities .....	0
Water Dischargers .....	28
Air Pollution .....	1
Brownfields .....	0
Toxic Release Inventory .....	1

## Other community features within defined area:

Schools .....	0
Hospitals .....	0
Places of Worship .....	0

## Other environmental data:

Air Non-attainment .....	No
Impaired Waters .....	Yes

Selected location contains American Indian Reservation Lands* .....	No
Selected location contains a "Justice40 (CEJST)" disadvantaged community .....	No
Selected location contains an EPA IRA disadvantaged community .....	N/A

Report for 3 miles Ring Centered at 20.801374,-156.492682

# EJScreen Environmental and Socioeconomic Indicators Data

## HEALTH INDICATORS

INDICATOR	HEALTH VALUE	STATE AVERAGE	STATE PERCENTILE	US AVERAGE	US PERCENTILE
Low Life Expectancy	16%	16%	49	20%	20
Heart Disease	3.5	4.7	14	6.1	7
Asthma	8.1	8.8	30	10	6
Cancer	4	5.1	14	6.1	11
Persons with Disabilities	12.1%	11.2%	61	13.4%	47

## CLIMATE INDICATORS

INDICATOR	HEALTH VALUE	STATE AVERAGE	STATE PERCENTILE	US AVERAGE	US PERCENTILE
Flood Risk	13%	29%	36	12%	75
Wildfire Risk	0%	0%	0	14%	0

## CRITICAL SERVICE GAPS

INDICATOR	HEALTH VALUE	STATE AVERAGE	STATE PERCENTILE	US AVERAGE	US PERCENTILE
Broadband Internet	7%	11%	44	14%	35
Lack of Health Insurance	4%	4%	65	9%	31
Housing Burden	No	N/A	N/A	N/A	N/A
Transportation Access	Yes	N/A	N/A	N/A	N/A
Food Desert	No	N/A	N/A	N/A	N/A

Footnotes

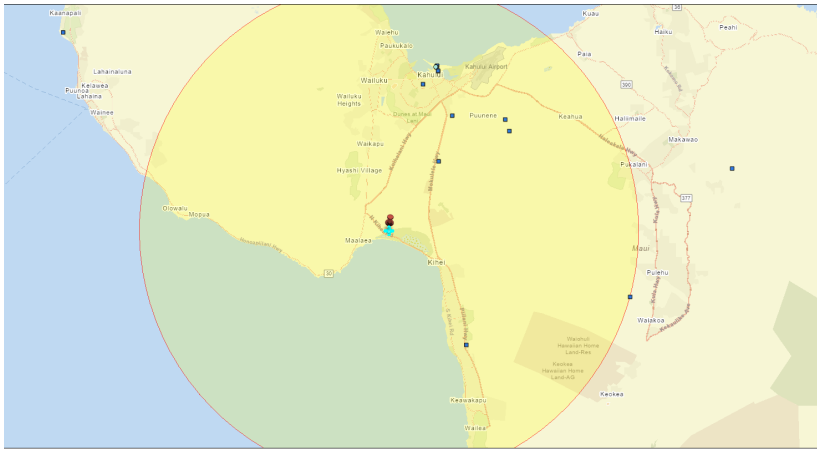
Report for 3 miles Ring Centered at 20.801374,-156.492682

# EJScreen Community Report

This report provides environmental and socioeconomic information for user-defined areas, and combines that data into environmental justice and supplemental indexes.

## Maalaea GS

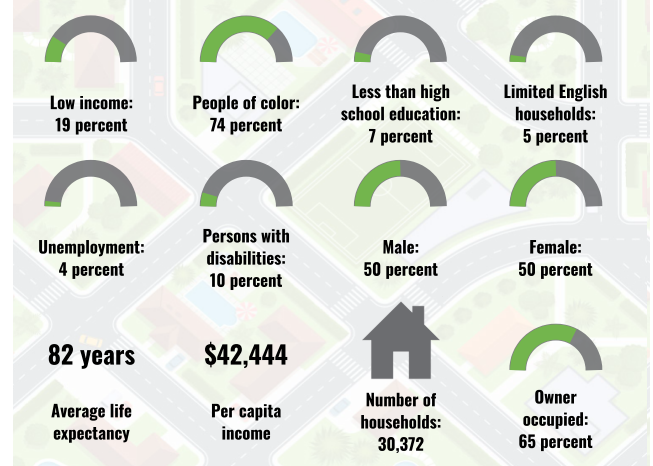
10 miles Ring Centered at 20.801374,-156.492682  
 Population: 93,801  
 Area in square miles: 314.03



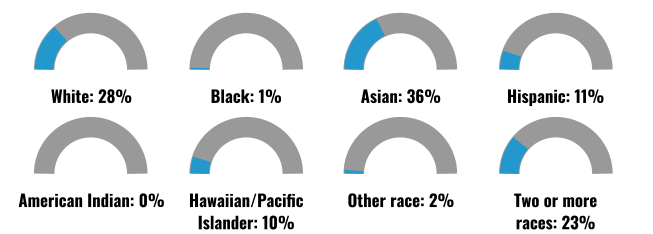
© 2023  
 Maalaea 10mi  
 Release Inventory  
 50,000 - 1,000,000 lb  
 Air pollution

1:144,448  
 0 1.75 3.5 7 mi  
 0 2.5 5 10 km  
 Esri, HERE, Garmin, SwireGraph, GeoTechnologies, Inc., METI/NASA, USGS, EPA, USDA

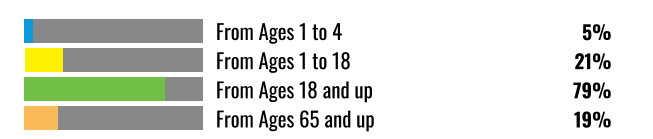
### COMMUNITY INFORMATION



### BREAKDOWN BY RACE



### BREAKDOWN BY AGE



### LIMITED ENGLISH SPEAKING BREAKDOWN



### LANGUAGES SPOKEN AT HOME

LANGUAGE	PERCENT
English	76%
Spanish	3%
Korean	1%
Tagalog (including Filipino)	7%
Other Asian and Pacific Island	12%
Total Non-English	24%

Notes: Numbers may not sum to totals due to rounding. Hispanic population can be of any race. Source: U.S. Census Bureau, American Community Survey (ACS) 2017-2021. Life expectancy data comes from the Centers for Disease Control.

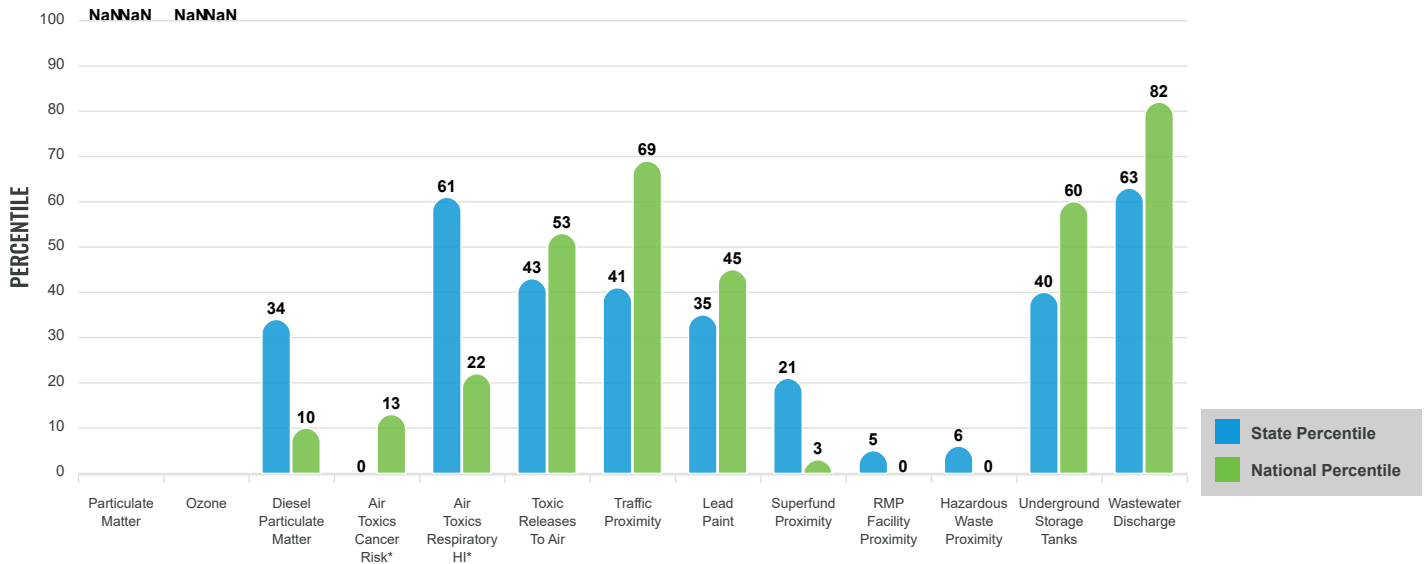
# Environmental Justice & Supplemental Indexes

The environmental justice and supplemental indexes are a combination of environmental and socioeconomic information. There are thirteen EJ indexes and supplemental indexes in EJScreen reflecting the 13 environmental indicators. The indexes for a selected area are compared to those for all other locations in the state or nation. For more information and calculation details on the EJ and supplemental indexes, please visit the [EJScreen website](#).

## EJ INDEXES

The EJ indexes help users screen for potential EJ concerns. To do this, the EJ index combines data on low income and people of color populations with a single environmental indicator.

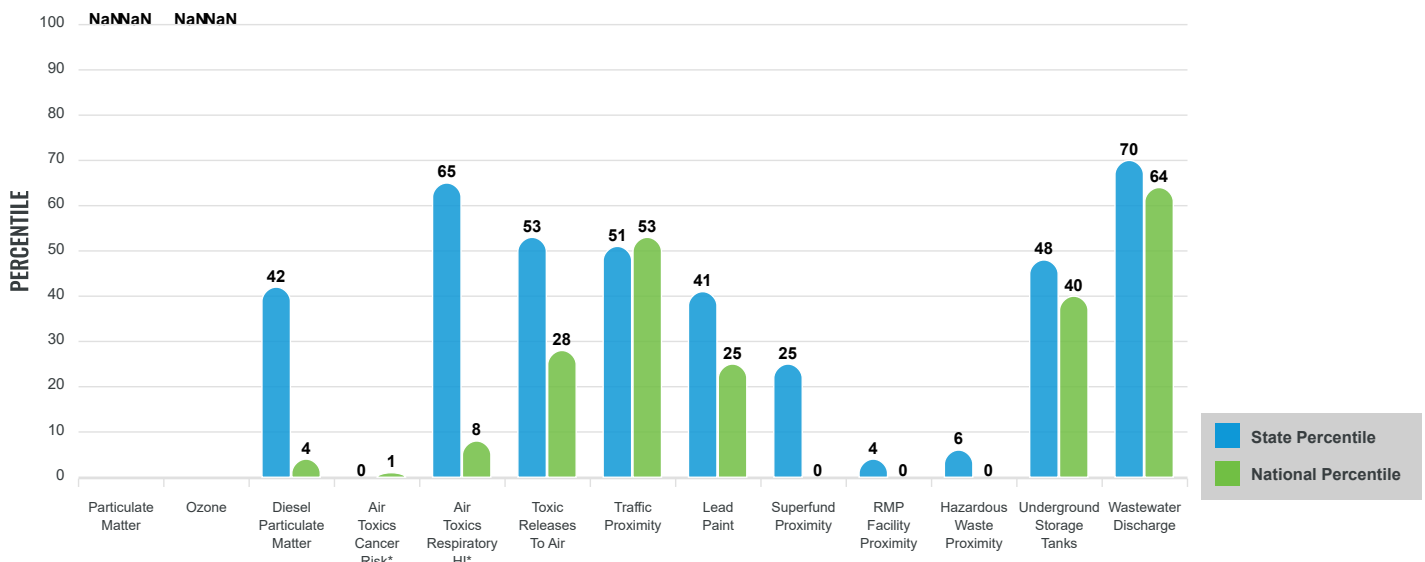
### EJ INDEXES FOR THE SELECTED LOCATION



## SUPPLEMENTAL INDEXES

The supplemental indexes offer a different perspective on community-level vulnerability. They combine data on percent low-income, percent linguistically isolated, percent less than high school education, percent unemployed, and low life expectancy with a single environmental indicator.

### SUPPLEMENTAL INDEXES FOR THE SELECTED LOCATION



These percentiles provide perspective on how the selected block group or buffer area compares to the entire state or nation.

Report for 10 miles Ring Centered at 20.801374,-156.492682

# EJScreen Environmental and Socioeconomic Indicators Data

SELECTED VARIABLES	VALUE	STATE AVERAGE	PERCENTILE IN STATE	USA AVERAGE	PERCENTILE IN USA
<b>POLLUTION AND SOURCES</b>					
Particulate Matter ( $\mu\text{g}/\text{m}^3$ )	N/A	N/A	N/A	8.08	N/A
Ozone (ppb)	N/A	N/A	N/A	61.6	N/A
Diesel Particulate Matter ( $\mu\text{g}/\text{m}^3$ )	0.0433	0.111	29	0.261	3
Air Toxics Cancer Risk* (lifetime risk per million)	10	11	0	28	1
Air Toxics Respiratory HI*	0.15	0.14	14	0.31	1
Toxic Releases to Air	240	410	56	4,600	34
Traffic Proximity (daily traffic count/distance to road)	120	450	43	210	61
Lead Paint (% Pre-1960 Housing)	0.085	0.16	50	0.3	33
Superfund Proximity (site count/km distance)	0.0059	0.096	17	0.13	1
RMP Facility Proximity (facility count/km distance)	0.0076	0.12	4	0.43	0
Hazardous Waste Proximity (facility count/km distance)	0.0067	0.84	4	1.9	0
Underground Storage Tanks (count/km <sup>2</sup> )	1.1	3.4	52	3.9	49
Wastewater Discharge (toxicity-weighted concentration/m distance)	77	25	90	22	99
<b>SOCIOECONOMIC INDICATORS</b>					
Demographic Index	47%	48%	41	35%	71
Supplemental Demographic Index	11%	11%	56	14%	39
People of Color	74%	74%	37	39%	80
Low Income	19%	21%	53	31%	36
Unemployment Rate	5%	5%	65	6%	61
Limited English Speaking Households	5%	5%	67	5%	75
Less Than High School Education	8%	7%	66	12%	48
Under Age 5	5%	5%	57	6%	52
Over Age 64	19%	19%	48	17%	62
Low Life Expectancy	16%	16%	46	20%	19

\*Diesel particulate matter, air toxics cancer risk, and air toxics respiratory hazard index are from the EPA's Air Toxics Data Update, which is the Agency's ongoing, comprehensive evaluation of air toxics in the United States. This effort aims to prioritize air toxics, emission sources, and locations of interest for further study. It is important to remember that the air toxics data presented here provide broad estimates of health risks over geographic areas of the country, not definitive risks to specific individuals or locations. Cancer risks and hazard indices from the Air Toxics Data Update are reported to one significant figure and any additional significant figures here are due to rounding. More information on the Air Toxics Data Update can be found at: <https://www.epa.gov/haps/air-toxics-data-update>.

## Sites reporting to EPA within defined area:

Superfund .....	0
Hazardous Waste, Treatment, Storage, and Disposal Facilities .....	0
Water Dischargers .....	384
Air Pollution .....	12
Brownfields .....	0
Toxic Release Inventory .....	8

## Other community features within defined area:

Schools .....	19
Hospitals .....	4
Places of Worship .....	19

## Other environmental data:

Air Non-attainment .....	No
Impaired Waters .....	Yes

Selected location contains American Indian Reservation Lands* .....	No
Selected location contains a "Justice40 (CEJST)" disadvantaged community .....	Yes
Selected location contains an EPA IRA disadvantaged community .....	N/A

Report for 10 miles Ring Centered at 20.801374,-156.492682



# EJScreen Environmental and Socioeconomic Indicators Data

## HEALTH INDICATORS

INDICATOR	HEALTH VALUE	STATE AVERAGE	STATE PERCENTILE	US AVERAGE	US PERCENTILE
Low Life Expectancy	16%	16%	46	20%	19
Heart Disease	4.8	4.7	47	6.1	22
Asthma	8.6	8.8	50	10	15
Cancer	5	5.1	37	6.1	24
Persons with Disabilities	9.7%	11.2%	36	13.4%	30

## CLIMATE INDICATORS

INDICATOR	HEALTH VALUE	STATE AVERAGE	STATE PERCENTILE	US AVERAGE	US PERCENTILE
Flood Risk	28%	29%	59	12%	90
Wildfire Risk	0%	0%	0	14%	0

## CRITICAL SERVICE GAPS

INDICATOR	HEALTH VALUE	STATE AVERAGE	STATE PERCENTILE	US AVERAGE	US PERCENTILE
Broadband Internet	13%	11%	64	14%	55
Lack of Health Insurance	5%	4%	77	9%	39
Housing Burden	Yes	N/A	N/A	N/A	N/A
Transportation Access	Yes	N/A	N/A	N/A	N/A
Food Desert	No	N/A	N/A	N/A	N/A

Footnotes

Report for 10 miles Ring Centered at 20.801374, -156.492682

# EJScreen Community Report

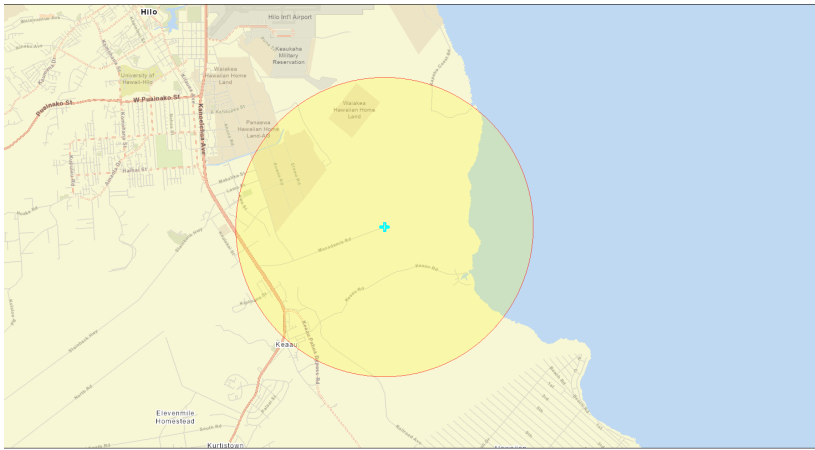
This report provides environmental and socioeconomic information for user-defined areas, and combines that data into environmental justice and supplemental indexes.

3 miles Ring Centered at 19.656854,-155.008861

## Mauna Loa Mac. Nut Corp. Plant

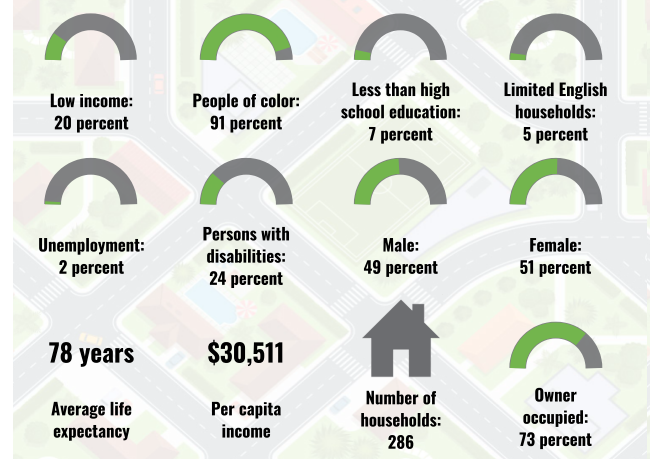
Population: 924

Area in square miles: 28.27

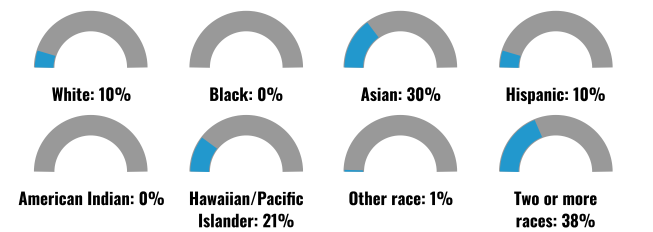


© 2023 Mauna Loa 3mi  
172,224  
0 0.75 1.5 3 mi  
0 1.25 2.5 5 km  
EPA, HERE, Garmin, DeLorme, GeoTechnologies, Inc., MNTN/NAASA, USGS, EPA, USDA

### COMMUNITY INFORMATION



### BREAKDOWN BY RACE



### BREAKDOWN BY AGE



### LIMITED ENGLISH SPEAKING BREAKDOWN



### LANGUAGES SPOKEN AT HOME

LANGUAGE	PERCENT
English	65%
Chinese (including Mandarin, Cantonese)	1%
Tagalog (including Filipino)	3%
Other Asian and Pacific Island	24%
Other and Unspecified	7%
Total Non-English	35%

Notes: Numbers may not sum to totals due to rounding. Hispanic population can be of any race. Source: U.S. Census Bureau, American Community Survey (ACS) 2017-2021. Life expectancy data comes from the Centers for Disease Control.

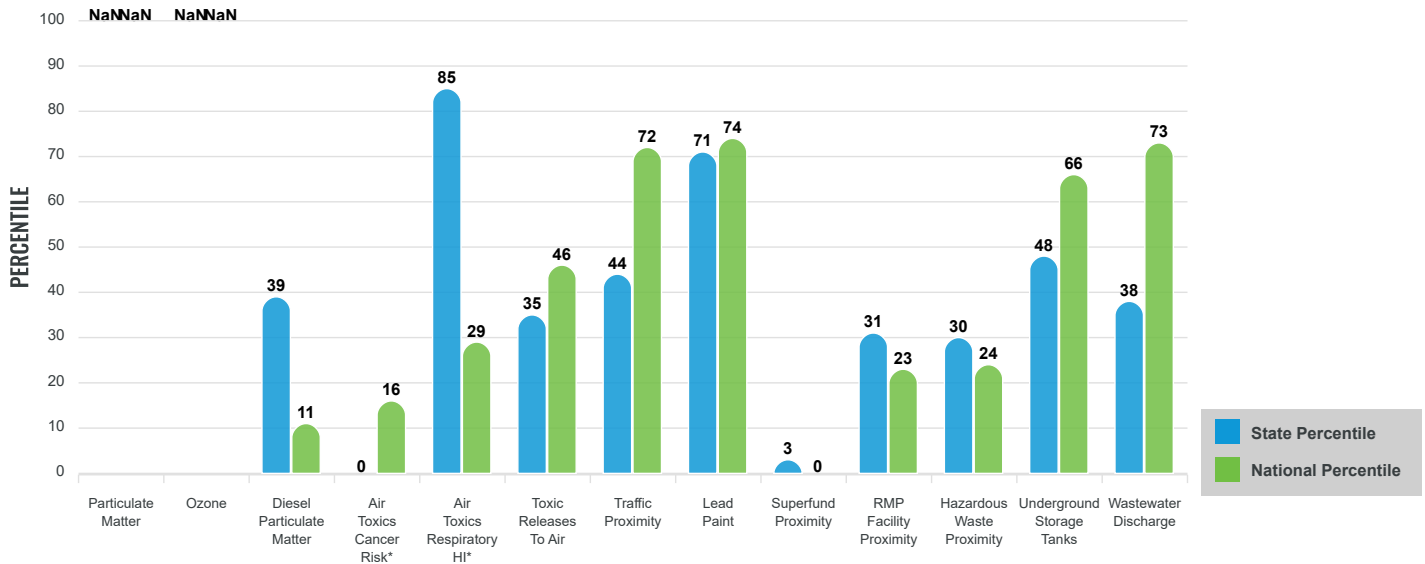
# Environmental Justice & Supplemental Indexes

The environmental justice and supplemental indexes are a combination of environmental and socioeconomic information. There are thirteen EJ indexes and supplemental indexes in EJScreen reflecting the 13 environmental indicators. The indexes for a selected area are compared to those for all other locations in the state or nation. For more information and calculation details on the EJ and supplemental indexes, please visit the [EJScreen website](#).

## EJ INDEXES

The EJ indexes help users screen for potential EJ concerns. To do this, the EJ index combines data on low income and people of color populations with a single environmental indicator.

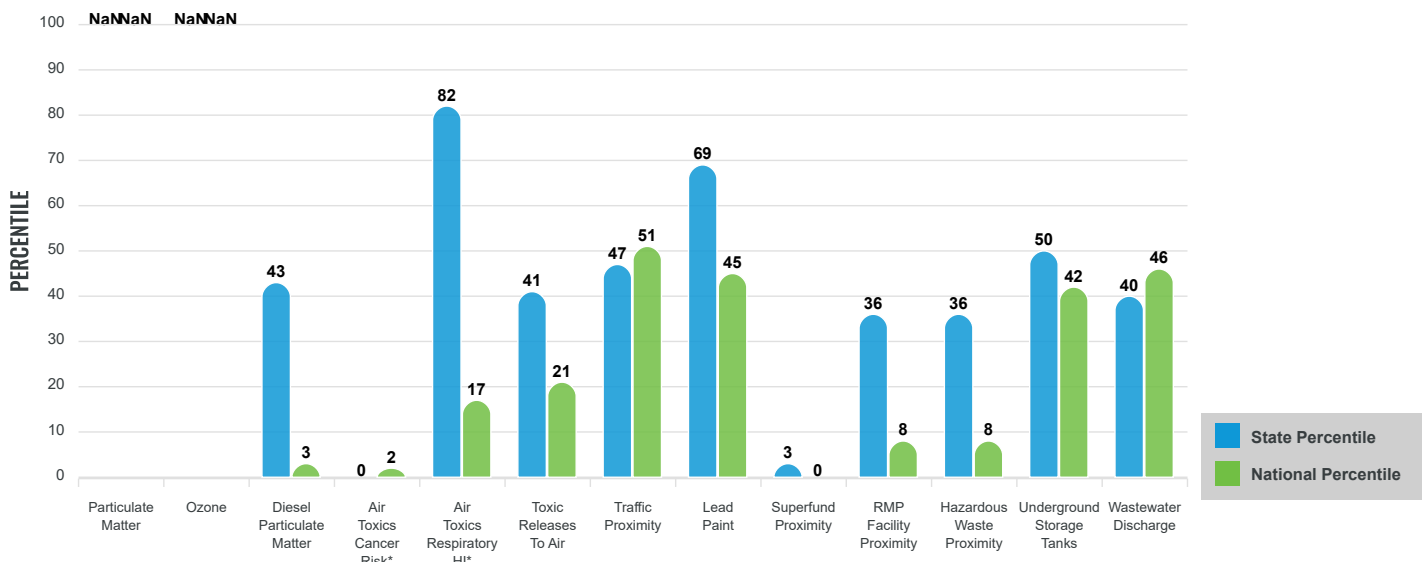
### EJ INDEXES FOR THE SELECTED LOCATION



## SUPPLEMENTAL INDEXES

The supplemental indexes offer a different perspective on community-level vulnerability. They combine data on percent low-income, percent linguistically isolated, percent less than high school education, percent unemployed, and low life expectancy with a single environmental indicator.

### SUPPLEMENTAL INDEXES FOR THE SELECTED LOCATION



These percentiles provide perspective on how the selected block group or buffer area compares to the entire state or nation.

Report for 3 miles Ring Centered at 19.656854,-155.008861

# EJScreen Environmental and Socioeconomic Indicators Data

SELECTED VARIABLES	VALUE	STATE AVERAGE	PERCENTILE IN STATE	USA AVERAGE	PERCENTILE IN USA
<b>POLLUTION AND SOURCES</b>					
Particulate Matter ( $\mu\text{g}/\text{m}^3$ )	N/A	N/A	N/A	8.08	N/A
Ozone (ppb)	N/A	N/A	N/A	61.6	N/A
Diesel Particulate Matter ( $\mu\text{g}/\text{m}^3$ )	0.0432	0.111	29	0.261	3
Air Toxics Cancer Risk* (lifetime risk per million)	10	11	0	28	1
Air Toxics Respiratory HI*	0.2	0.14	59	0.31	4
Toxic Releases to Air	63	410	27	4,600	19
Traffic Proximity (daily traffic count/distance to road)	83	450	37	210	52
Lead Paint (% Pre-1960 Housing)	0.18	0.16	65	0.3	45
Superfund Proximity (site count/km distance)	0.0028	0.096	2	0.13	0
RMP Facility Proximity (facility count/km distance)	0.042	0.12	23	0.43	7
Hazardous Waste Proximity (facility count/km distance)	0.042	0.84	24	1.9	7
Underground Storage Tanks (count/km <sup>2</sup> )	0.47	3.4	39	3.9	39
Wastewater Discharge (toxicity-weighted concentration/m distance)	0.057	25	57	22	79
<b>SOCIOECONOMIC INDICATORS</b>					
Demographic Index	56%	48%	72	35%	79
Supplemental Demographic Index	11%	11%	63	14%	43
People of Color	91%	74%	73	39%	90
Low Income	20%	21%	55	31%	38
Unemployment Rate	4%	5%	55	6%	52
Limited English Speaking Households	5%	5%	68	5%	75
Less Than High School Education	7%	7%	60	12%	43
Under Age 5	3%	5%	36	6%	31
Over Age 64	26%	19%	76	17%	83
Low Life Expectancy	21%	16%	92	20%	66

\*Diesel particulate matter, air toxics cancer risk, and air toxics respiratory hazard index are from the EPA's Air Toxics Data Update, which is the Agency's ongoing, comprehensive evaluation of air toxics in the United States. This effort aims to prioritize air toxics, emission sources, and locations of interest for further study. It is important to remember that the air toxics data presented here provide broad estimates of health risks over geographic areas of the country, not definitive risks to specific individuals or locations. Cancer risks and hazard indices from the Air Toxics Data Update are reported to one significant figure and any additional significant figures here are due to rounding. More information on the Air Toxics Data Update can be found at: <https://www.epa.gov/haps/air-toxics-data-update>.

## Sites reporting to EPA within defined area:

Superfund .....	0
Hazardous Waste, Treatment, Storage, and Disposal Facilities .....	0
Water Dischargers .....	25
Air Pollution .....	3
Brownfields .....	0
Toxic Release Inventory .....	1

## Other community features within defined area:

Schools .....	0
Hospitals .....	0
Places of Worship .....	2

## Other environmental data:

Air Non-attainment .....	No
Impaired Waters .....	No

Selected location contains American Indian Reservation Lands* .....	No
Selected location contains a "Justice40 (CEJST)" disadvantaged community .....	Yes
Selected location contains an EPA IRA disadvantaged community .....	N/A

Report for 3 miles Ring Centered at 19.656854,-155.008861

# EJScreen Environmental and Socioeconomic Indicators Data

HEALTH INDICATORS					
INDICATOR	HEALTH VALUE	STATE AVERAGE	STATE PERCENTILE	US AVERAGE	US PERCENTILE
Low Life Expectancy	21%	16%	92	20%	66
Heart Disease	6.3	4.7	89	6.1	56
Asthma	10	8.8	83	10	52
Cancer	5.6	5.1	57	6.1	35
Persons with Disabilities	18.9%	11.2%	95	13.4%	82

CLIMATE INDICATORS					
INDICATOR	HEALTH VALUE	STATE AVERAGE	STATE PERCENTILE	US AVERAGE	US PERCENTILE
Flood Risk	34%	29%	68	12%	92
Wildfire Risk	0%	0%	0	14%	0

CRITICAL SERVICE GAPS					
INDICATOR	HEALTH VALUE	STATE AVERAGE	STATE PERCENTILE	US AVERAGE	US PERCENTILE
Broadband Internet	23%	11%	89	14%	80
Lack of Health Insurance	5%	4%	73	9%	36
Housing Burden	No	N/A	N/A	N/A	N/A
Transportation Access	Yes	N/A	N/A	N/A	N/A
Food Desert	Yes	N/A	N/A	N/A	N/A

Footnotes

Report for 3 miles Ring Centered at 19.656854,-155.008861

# EJScreen Community Report

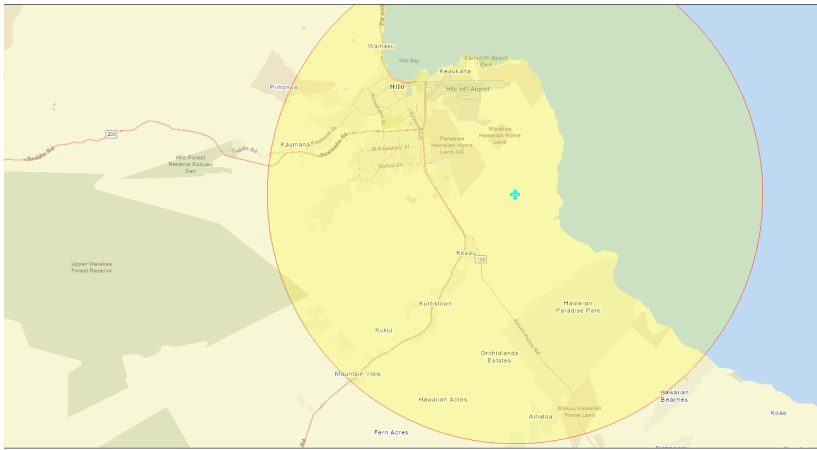
This report provides environmental and socioeconomic information for user-defined areas, and combines that data into environmental justice and supplemental indexes.

10 miles Ring Centered at 19.656854,-155.008861

## Mauna Loa Mac. Nut Corp. Plant

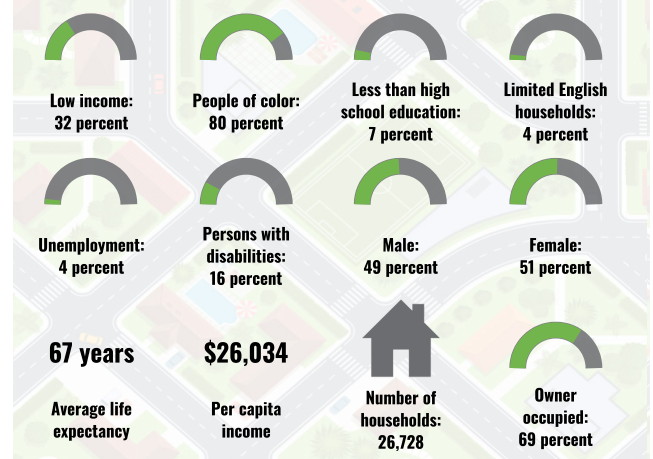
Population: 76,554

Area in square miles: 314.03

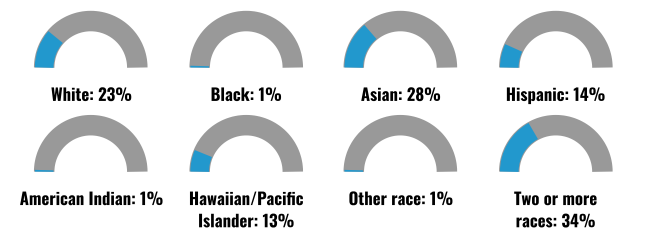


© 2023  
Mauna Loa 3mi  
1:144,448  
0 1.75 3.5 7 mi  
0 2.25 4.5 9 km  
Esri, HERE, Garmin, SwireGraph, GeoTechnologies, Inc., METI/NASA, USGS, EPA, USDA

### COMMUNITY INFORMATION



### BREAKDOWN BY RACE



### BREAKDOWN BY AGE



### LIMITED ENGLISH SPEAKING BREAKDOWN



Notes: Numbers may not sum to totals due to rounding. Hispanic population can be of any race. Source: U.S. Census Bureau, American Community Survey (ACS) 2017-2021. Life expectancy data comes from the Centers for Disease Control.

### LANGUAGES SPOKEN AT HOME

LANGUAGE	PERCENT
English	76%
Spanish	2%
Chinese (including Mandarin, Cantonese)	1%
Vietnamese	1%
Tagalog (including Filipino)	2%
Other Asian and Pacific Island	12%
Other and Unspecified	6%
Total Non-English	24%

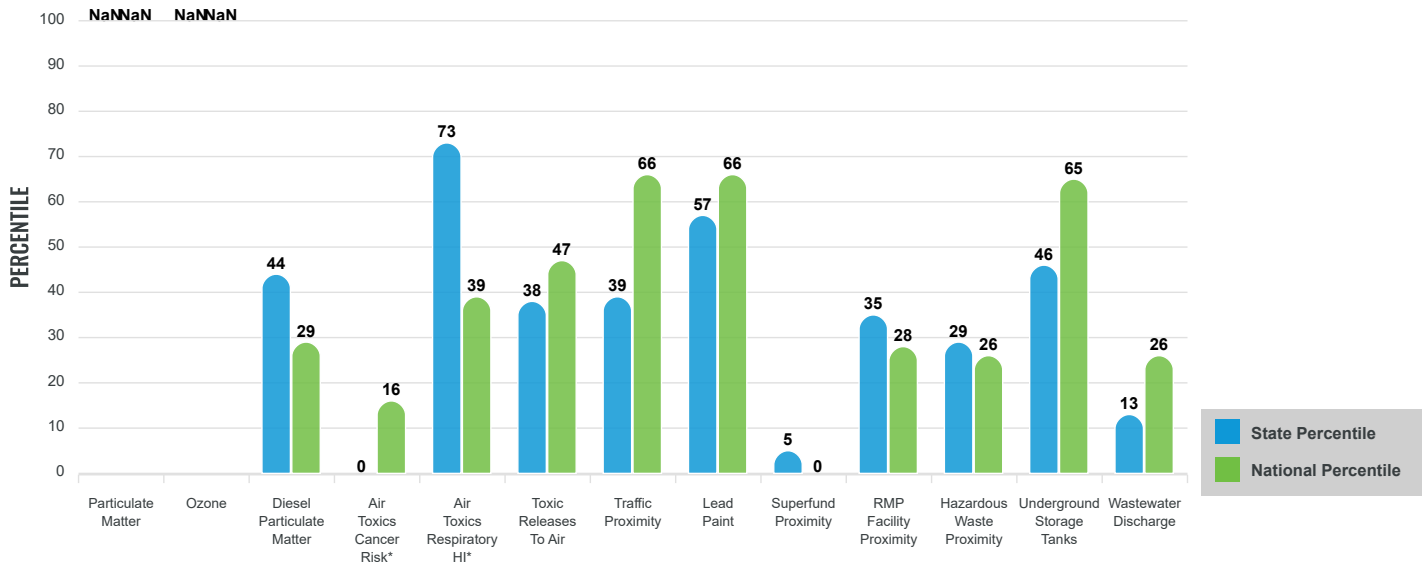
# Environmental Justice & Supplemental Indexes

The environmental justice and supplemental indexes are a combination of environmental and socioeconomic information. There are thirteen EJ indexes and supplemental indexes in EJScreen reflecting the 13 environmental indicators. The indexes for a selected area are compared to those for all other locations in the state or nation. For more information and calculation details on the EJ and supplemental indexes, please visit the [EJScreen website](#).

## EJ INDEXES

The EJ indexes help users screen for potential EJ concerns. To do this, the EJ index combines data on low income and people of color populations with a single environmental indicator.

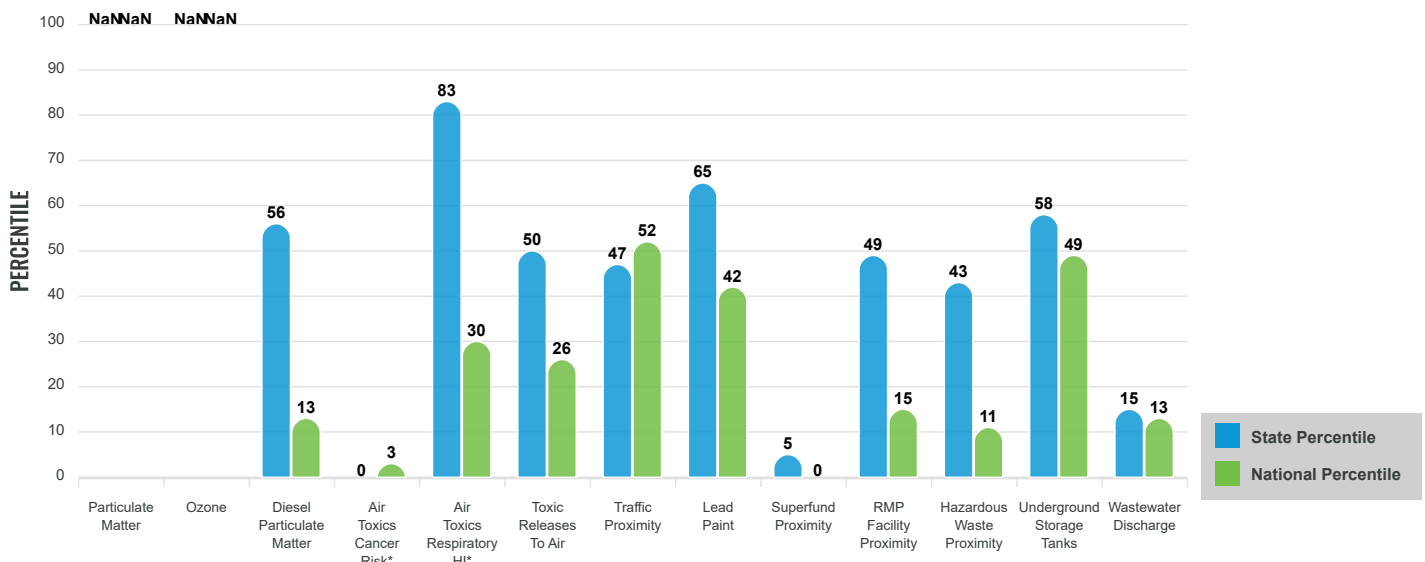
### EJ INDEXES FOR THE SELECTED LOCATION



## SUPPLEMENTAL INDEXES

The supplemental indexes offer a different perspective on community-level vulnerability. They combine data on percent low-income, percent linguistically isolated, percent less than high school education, percent unemployed, and low life expectancy with a single environmental indicator.

### SUPPLEMENTAL INDEXES FOR THE SELECTED LOCATION



These percentiles provide perspective on how the selected block group or buffer area compares to the entire state or nation.

Report for 10 miles Ring Centered at 19.656854,-155.008861

# EJScreen Environmental and Socioeconomic Indicators Data

SELECTED VARIABLES	VALUE	STATE AVERAGE	PERCENTILE IN STATE	USA AVERAGE	PERCENTILE IN USA
<b>POLLUTION AND SOURCES</b>					
Particulate Matter ( $\mu\text{g}/\text{m}^3$ )	N/A	N/A	N/A	8.08	N/A
Ozone (ppb)	N/A	N/A	N/A	61.6	N/A
Diesel Particulate Matter ( $\mu\text{g}/\text{m}^3$ )	0.058	0.111	41	0.261	5
Air Toxics Cancer Risk* (lifetime risk per million)	10	11	0	28	1
Air Toxics Respiratory HI*	0.19	0.14	14	0.31	1
Toxic Releases to Air	82	410	31	4,600	22
Traffic Proximity (daily traffic count/distance to road)	73	450	36	210	48
Lead Paint (% Pre-1960 Housing)	0.14	0.16	60	0.3	41
Superfund Proximity (site count/km distance)	0.0028	0.096	2	0.13	0
RMP Facility Proximity (facility count/km distance)	0.046	0.12	25	0.43	9
Hazardous Waste Proximity (facility count/km distance)	0.046	0.84	24	1.9	8
Underground Storage Tanks (count/km <sup>2</sup> )	1.2	3.4	54	3.9	50
Wastewater Discharge (toxicity-weighted concentration/m distance)	0.32	25	59	22	87
<b>SOCIOECONOMIC INDICATORS</b>					
Demographic Index	56%	48%	73	35%	80
Supplemental Demographic Index	14%	11%	77	14%	57
People of Color	80%	74%	46	39%	83
Low Income	33%	21%	80	31%	59
Unemployment Rate	7%	5%	74	6%	69
Limited English Speaking Households	4%	5%	63	5%	72
Less Than High School Education	7%	7%	63	12%	46
Under Age 5	5%	5%	54	6%	49
Over Age 64	21%	19%	60	17%	71
Low Life Expectancy	19%	16%	76	20%	42

\*Diesel particulate matter, air toxics cancer risk, and air toxics respiratory hazard index are from the EPA's Air Toxics Data Update, which is the Agency's ongoing, comprehensive evaluation of air toxics in the United States. This effort aims to prioritize air toxics, emission sources, and locations of interest for further study. It is important to remember that the air toxics data presented here provide broad estimates of health risks over geographic areas of the country, not definitive risks to specific individuals or locations. Cancer risks and hazard indices from the Air Toxics Data Update are reported to one significant figure and any additional significant figures here are due to rounding. More information on the Air Toxics Data Update can be found at: <https://www.epa.gov/haps/air-toxics-data-update>.

## Sites reporting to EPA within defined area:

Superfund .....	0
Hazardous Waste, Treatment, Storage, and Disposal Facilities .....	0
Water Dischargers .....	346
Air Pollution .....	13
Brownfields .....	2
Toxic Release Inventory .....	10

## Other community features within defined area:

Schools .....	30
Hospitals .....	5
Places of Worship .....	35

## Other environmental data:

Air Non-attainment .....	No
Impaired Waters .....	Yes

Selected location contains American Indian Reservation Lands* .....	No
Selected location contains a "Justice40 (CEJST)" disadvantaged community .....	Yes
Selected location contains an EPA IRA disadvantaged community .....	N/A

Report for 10 miles Ring Centered at 19.656854,-155.008861



# EJScreen Environmental and Socioeconomic Indicators Data

HEALTH INDICATORS					
INDICATOR	HEALTH VALUE	STATE AVERAGE	STATE PERCENTILE	US AVERAGE	US PERCENTILE
Low Life Expectancy	19%	16%	76	20%	42
Heart Disease	6	4.7	85	6.1	48
Asthma	9.6	8.8	77	10	40
Cancer	5.5	5.1	53	6.1	33
Persons with Disabilities	15.8%	11.2%	83	13.4%	69

CLIMATE INDICATORS					
INDICATOR	HEALTH VALUE	STATE AVERAGE	STATE PERCENTILE	US AVERAGE	US PERCENTILE
Flood Risk	52%	29%	80	12%	95
Wildfire Risk	0%	0%	0	14%	0

CRITICAL SERVICE GAPS					
INDICATOR	HEALTH VALUE	STATE AVERAGE	STATE PERCENTILE	US AVERAGE	US PERCENTILE
Broadband Internet	17%	11%	77	14%	68
Lack of Health Insurance	4%	4%	58	9%	25
Housing Burden	No	N/A	N/A	N/A	N/A
Transportation Access	Yes	N/A	N/A	N/A	N/A
Food Desert	Yes	N/A	N/A	N/A	N/A

Footnotes

Report for 10 miles Ring Centered at 19.656854, -155.008861

# EJScreen Community Report

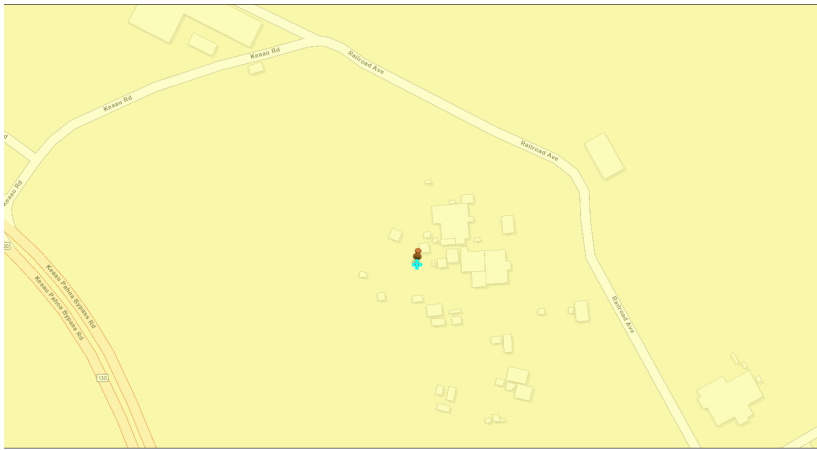
This report provides environmental and socioeconomic information for user-defined areas, and combines that data into environmental justice and supplemental indexes.

## Puna GS

3 miles Ring Centered at 19.631376,-155.031689

Population: 3,208

Area in square miles: 28.27

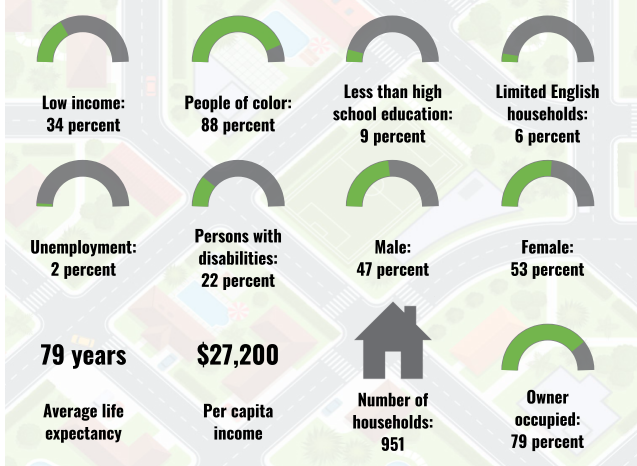


6/2023  
 Puna 3mi  
 Release Inventory  
 0 - 49,999 lb  
 Air pollution

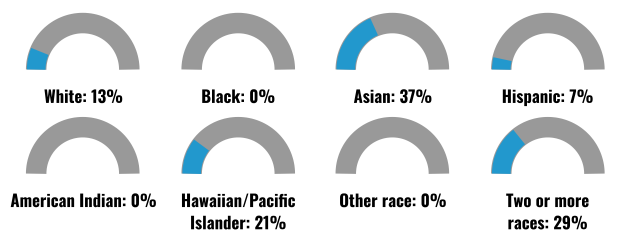
1:2,257  
 0 0.03 0.05 0.1 mi  
 0 0.04 0.08 0.16 km

Env. Community Maps, Contributor: © OpenStreetMap, Microsoft, Esri, HERE, Garmin, Swatchway, GeoTechnologies, Inc, Mapbox, USGS, EPA, US Census Bureau, USGS

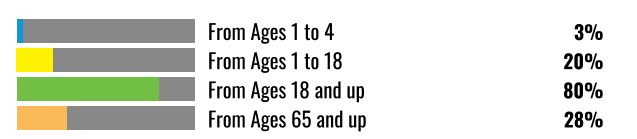
### COMMUNITY INFORMATION



### BREAKDOWN BY RACE



### BREAKDOWN BY AGE



### LIMITED ENGLISH SPEAKING BREAKDOWN



### LANGUAGES SPOKEN AT HOME

LANGUAGE	PERCENT
No language data available.	

Notes: Numbers may not sum to totals due to rounding. Hispanic population can be of any race. Source: U.S. Census Bureau, American Community Survey (ACS) 2017-2021. Life expectancy data comes from the Centers for Disease Control.

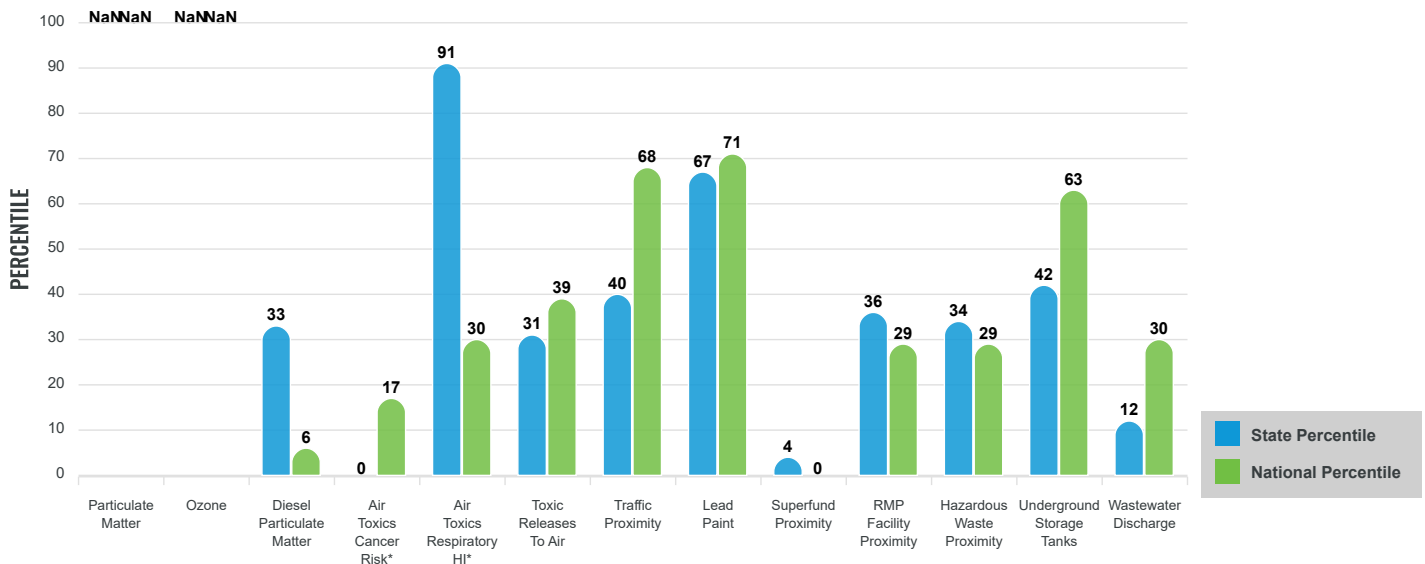
# Environmental Justice & Supplemental Indexes

The environmental justice and supplemental indexes are a combination of environmental and socioeconomic information. There are thirteen EJ indexes and supplemental indexes in EJScreen reflecting the 13 environmental indicators. The indexes for a selected area are compared to those for all other locations in the state or nation. For more information and calculation details on the EJ and supplemental indexes, please visit the [EJScreen website](#).

## EJ INDEXES

The EJ indexes help users screen for potential EJ concerns. To do this, the EJ index combines data on low income and people of color populations with a single environmental indicator.

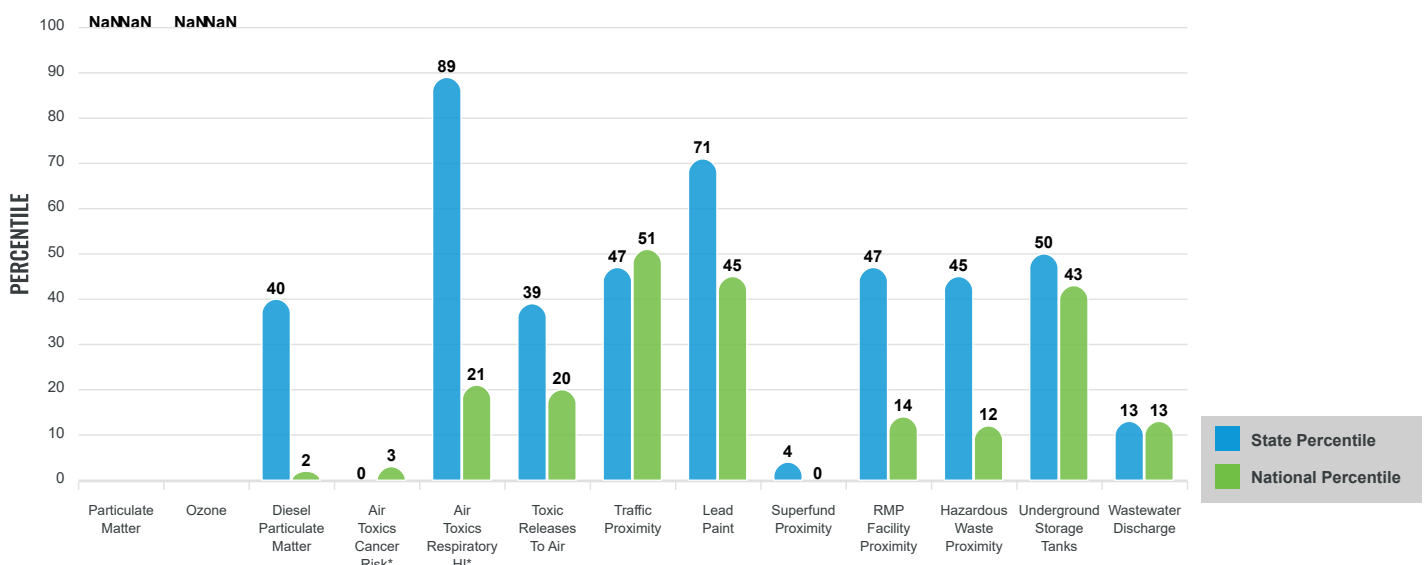
### EJ INDEXES FOR THE SELECTED LOCATION



## SUPPLEMENTAL INDEXES

The supplemental indexes offer a different perspective on community-level vulnerability. They combine data on percent low-income, percent linguistically isolated, percent less than high school education, percent unemployed, and low life expectancy with a single environmental indicator.

### SUPPLEMENTAL INDEXES FOR THE SELECTED LOCATION



These percentiles provide perspective on how the selected block group or buffer area compares to the entire state or nation.

Report for 3 miles Ring Centered at 19.631376,-155.031689

# EJScreen Environmental and Socioeconomic Indicators Data

SELECTED VARIABLES	VALUE	STATE AVERAGE	PERCENTILE IN STATE	USA AVERAGE	PERCENTILE IN USA
<b>POLLUTION AND SOURCES</b>					
Particulate Matter ( $\mu\text{g}/\text{m}^3$ )	N/A	N/A	N/A	8.08	N/A
Ozone (ppb)	N/A	N/A	N/A	61.6	N/A
Diesel Particulate Matter ( $\mu\text{g}/\text{m}^3$ )	0.0322	0.111	21	0.261	2
Air Toxics Cancer Risk* (lifetime risk per million)	10	11	0	28	1
Air Toxics Respiratory HI*	0.2	0.14	59	0.31	4
Toxic Releases to Air	35	410	20	4,600	15
Traffic Proximity (daily traffic count/distance to road)	57	450	32	210	43
Lead Paint (% Pre-1960 Housing)	0.14	0.16	59	0.3	40
Superfund Proximity (site count/km distance)	0.0027	0.096	2	0.13	0
RMP Facility Proximity (facility count/km distance)	0.046	0.12	26	0.43	9
Hazardous Waste Proximity (facility count/km distance)	0.046	0.84	24	1.9	8
Underground Storage Tanks (count/km <sup>2</sup> )	0.2	3.4	31	3.9	32
Wastewater Discharge (toxicity-weighted concentration/m distance)	0.014	25	54	22	70
<b>SOCIOECONOMIC INDICATORS</b>					
Demographic Index	61%	48%	84	35%	83
Supplemental Demographic Index	14%	11%	79	14%	58
People of Color	88%	74%	63	39%	87
Low Income	34%	21%	82	31%	61
Unemployment Rate	4%	5%	57	6%	53
Limited English Speaking Households	6%	5%	70	5%	77
Less Than High School Education	9%	7%	72	12%	53
Under Age 5	3%	5%	34	6%	30
Over Age 64	28%	19%	80	17%	86
Low Life Expectancy	20%	16%	83	20%	53

\*Diesel particulate matter, air toxics cancer risk, and air toxics respiratory hazard index are from the EPA's Air Toxics Data Update, which is the Agency's ongoing, comprehensive evaluation of air toxics in the United States. This effort aims to prioritize air toxics, emission sources, and locations of interest for further study. It is important to remember that the air toxics data presented here provide broad estimates of health risks over geographic areas of the country, not definitive risks to specific individuals or locations. Cancer risks and hazard indices from the Air Toxics Data Update are reported to one significant figure and any additional significant figures here are due to rounding. More information on the Air Toxics Data Update can be found at: <https://www.epa.gov/haps/air-toxics-data-update>.

## Sites reporting to EPA within defined area:

Superfund .....	0
Hazardous Waste, Treatment, Storage, and Disposal Facilities .....	0
Water Dischargers .....	24
Air Pollution .....	3
Brownfields .....	0
Toxic Release Inventory .....	2

## Other community features within defined area:

Schools .....	2
Hospitals .....	1
Places of Worship .....	3

## Other environmental data:

Air Non-attainment .....	No
Impaired Waters .....	No

Selected location contains American Indian Reservation Lands* .....	No
Selected location contains a "Justice40 (CEJST)" disadvantaged community .....	Yes
Selected location contains an EPA IRA disadvantaged community .....	N/A

Report for 3 miles Ring Centered at 19.631376,-155.031689

# EJScreen Environmental and Socioeconomic Indicators Data

## HEALTH INDICATORS

INDICATOR	HEALTH VALUE	STATE AVERAGE	STATE PERCENTILE	US AVERAGE	US PERCENTILE
Low Life Expectancy	20%	16%	83	20%	53
Heart Disease	6.3	4.7	88	6.1	54
Asthma	9.3	8.8	71	10	33
Cancer	5.4	5.1	53	6.1	33
Persons with Disabilities	20.5%	11.2%	96	13.4%	87

## CLIMATE INDICATORS

INDICATOR	HEALTH VALUE	STATE AVERAGE	STATE PERCENTILE	US AVERAGE	US PERCENTILE
Flood Risk	47%	29%	78	12%	95
Wildfire Risk	0%	0%	0	14%	0

## CRITICAL SERVICE GAPS

INDICATOR	HEALTH VALUE	STATE AVERAGE	STATE PERCENTILE	US AVERAGE	US PERCENTILE
Broadband Internet	17%	11%	77	14%	68
Lack of Health Insurance	5%	4%	69	9%	33
Housing Burden	No	N/A	N/A	N/A	N/A
Transportation Access	Yes	N/A	N/A	N/A	N/A
Food Desert	Yes	N/A	N/A	N/A	N/A

Footnotes

Report for 3 miles Ring Centered at 19.631376,-155.031689

# EJScreen Community Report

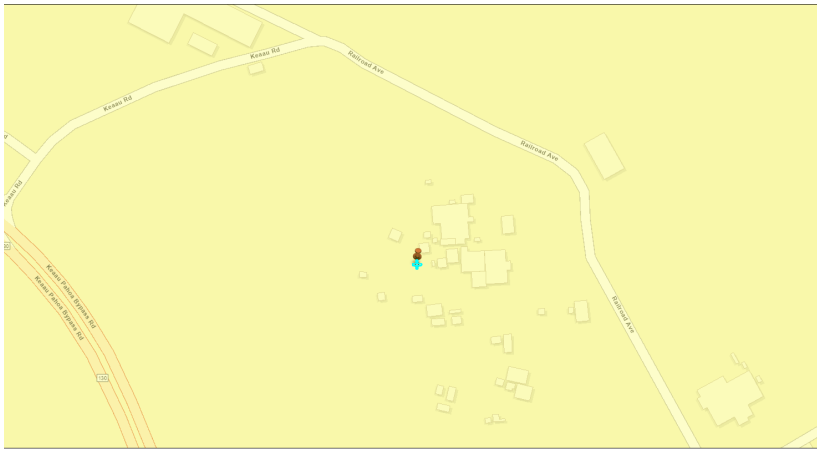
This report provides environmental and socioeconomic information for user-defined areas, and combines that data into environmental justice and supplemental indexes.

## Puna GS

10 miles Ring Centered at 19.631376,-155.031689

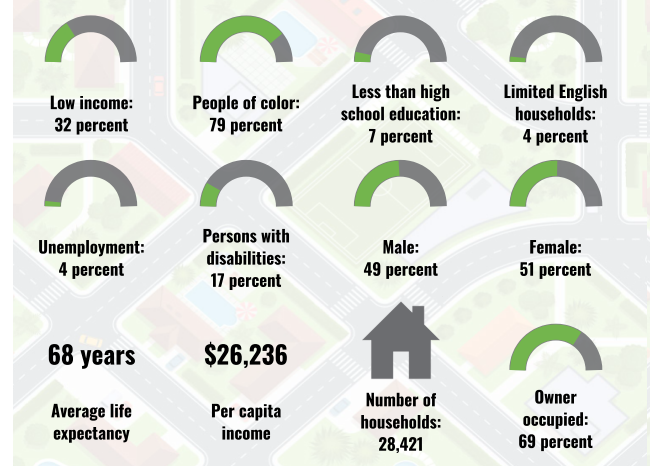
Population: 81,454

Area in square miles: 314.03

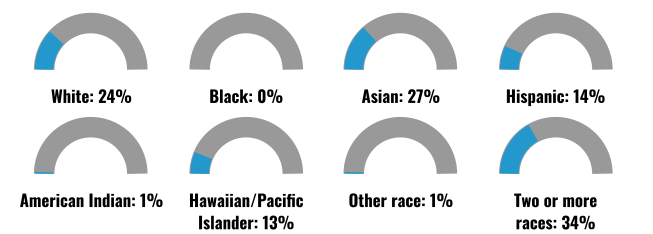


© 2023  
Puna 3mi  
Release Inventory  
0 - 49,999 lb  
Air pollution  
1:2,257  
0 0.03 0.05 0.1 mi  
0 0.04 0.08 0.16 km  
Eri Community Maps, Contributor: © OpenStreetMap, Microsoft, Esri, HERE, Garmin, Swatchday, GeoTechnologies, Inc, Mapbox, USGS, EPA, US Census Bureau, USDA

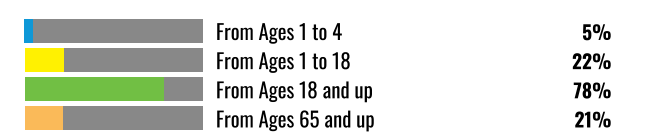
### COMMUNITY INFORMATION



### BREAKDOWN BY RACE



### BREAKDOWN BY AGE



### LIMITED ENGLISH SPEAKING BREAKDOWN



### LANGUAGES SPOKEN AT HOME

LANGUAGE	PERCENT
English	76%
Spanish	2%
Chinese (including Mandarin, Cantonese)	1%
Vietnamese	1%
Tagalog (including Filipino)	2%
Other Asian and Pacific Island	12%
Other and Unspecified	6%
Total Non-English	24%

Notes: Numbers may not sum to totals due to rounding. Hispanic population can be of any race. Source: U.S. Census Bureau, American Community Survey (ACS) 2017-2021. Life expectancy data comes from the Centers for Disease Control.

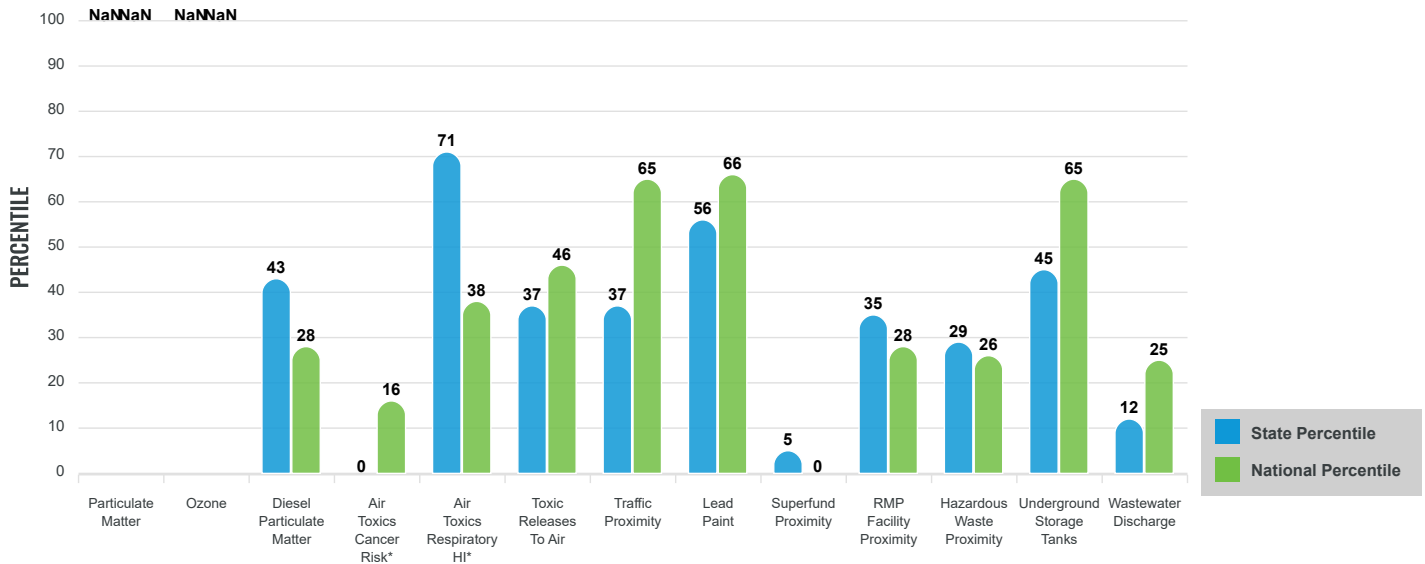
# Environmental Justice & Supplemental Indexes

The environmental justice and supplemental indexes are a combination of environmental and socioeconomic information. There are thirteen EJ indexes and supplemental indexes in EJScreen reflecting the 13 environmental indicators. The indexes for a selected area are compared to those for all other locations in the state or nation. For more information and calculation details on the EJ and supplemental indexes, please visit the [EJScreen website](#).

## EJ INDEXES

The EJ indexes help users screen for potential EJ concerns. To do this, the EJ index combines data on low income and people of color populations with a single environmental indicator.

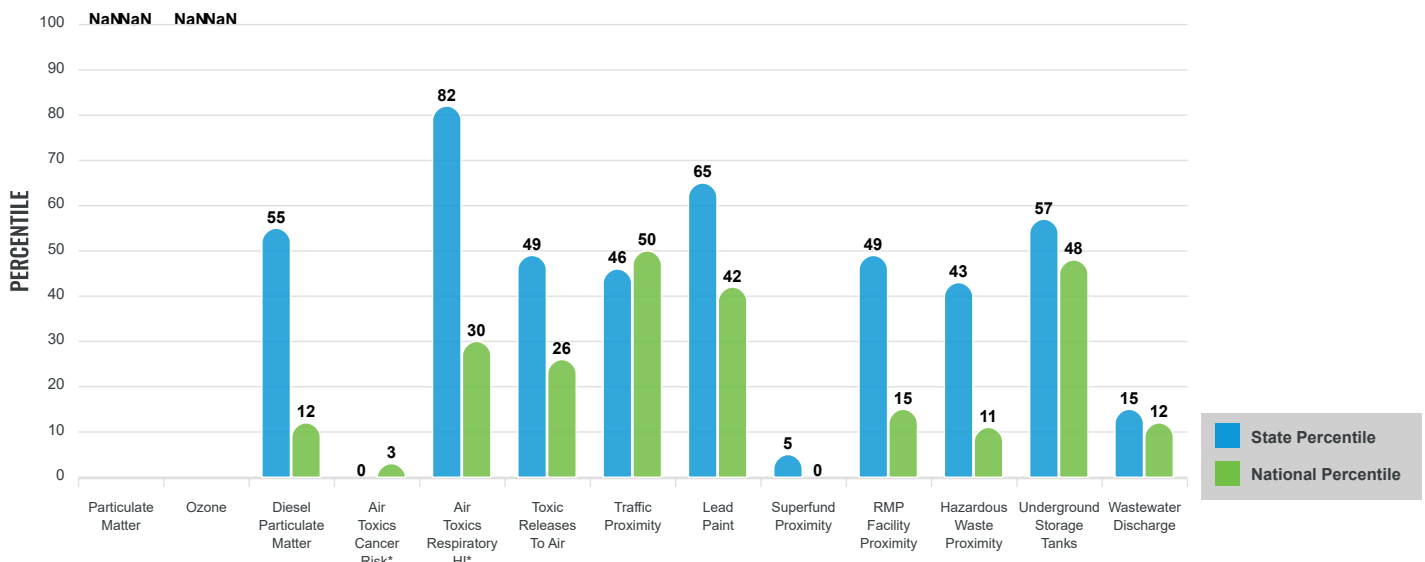
### EJ INDEXES FOR THE SELECTED LOCATION



## SUPPLEMENTAL INDEXES

The supplemental indexes offer a different perspective on community-level vulnerability. They combine data on percent low-income, percent linguistically isolated, percent less than high school education, percent unemployed, and low life expectancy with a single environmental indicator.

### SUPPLEMENTAL INDEXES FOR THE SELECTED LOCATION



These percentiles provide perspective on how the selected block group or buffer area compares to the entire state or nation.

Report for 10 miles Ring Centered at 19.631376,-155.031689

# EJScreen Environmental and Socioeconomic Indicators Data

SELECTED VARIABLES	VALUE	STATE AVERAGE	PERCENTILE IN STATE	USA AVERAGE	PERCENTILE IN USA
<b>POLLUTION AND SOURCES</b>					
Particulate Matter ( $\mu\text{g}/\text{m}^3$ )	N/A	N/A	N/A	8.08	N/A
Ozone (ppb)	N/A	N/A	N/A	61.6	N/A
Diesel Particulate Matter ( $\mu\text{g}/\text{m}^3$ )	0.0559	0.111	39	0.261	5
Air Toxics Cancer Risk* (lifetime risk per million)	10	11	0	28	1
Air Toxics Respiratory HI*	0.19	0.14	14	0.31	1
Toxic Releases to Air	79	410	31	4,600	21
Traffic Proximity (daily traffic count/distance to road)	70	450	35	210	47
Lead Paint (% Pre-1960 Housing)	0.14	0.16	59	0.3	40
Superfund Proximity (site count/km distance)	0.0028	0.096	2	0.13	0
RMP Facility Proximity (facility count/km distance)	0.046	0.12	25	0.43	9
Hazardous Waste Proximity (facility count/km distance)	0.046	0.84	24	1.9	8
Underground Storage Tanks (count/km <sup>2</sup> )	1.2	3.4	53	3.9	50
Wastewater Discharge (toxicity-weighted concentration/m distance)	0.31	25	59	22	87
<b>SOCIOECONOMIC INDICATORS</b>					
Demographic Index	56%	48%	73	35%	80
Supplemental Demographic Index	14%	11%	78	14%	57
People of Color	79%	74%	45	39%	83
Low Income	33%	21%	81	31%	59
Unemployment Rate	7%	5%	74	6%	70
Limited English Speaking Households	4%	5%	63	5%	72
Less Than High School Education	7%	7%	63	12%	46
Under Age 5	5%	5%	55	6%	51
Over Age 64	21%	19%	59	17%	70
Low Life Expectancy	19%	16%	75	20%	41

\*Diesel particulate matter, air toxics cancer risk, and air toxics respiratory hazard index are from the EPA's Air Toxics Data Update, which is the Agency's ongoing, comprehensive evaluation of air toxics in the United States. This effort aims to prioritize air toxics, emission sources, and locations of interest for further study. It is important to remember that the air toxics data presented here provide broad estimates of health risks over geographic areas of the country, not definitive risks to specific individuals or locations. Cancer risks and hazard indices from the Air Toxics Data Update are reported to one significant figure and any additional significant figures here are due to rounding. More information on the Air Toxics Data Update can be found at: <https://www.epa.gov/haps/air-toxics-data-update>.

## Sites reporting to EPA within defined area:

Superfund .....	0
Hazardous Waste, Treatment, Storage, and Disposal Facilities .....	0
Water Dischargers .....	352
Air Pollution .....	13
Brownfields .....	2
Toxic Release Inventory .....	10

## Other community features within defined area:

Schools .....	30
Hospitals .....	5
Places of Worship .....	35

## Other environmental data:

Air Non-attainment .....	No
Impaired Waters .....	Yes

Selected location contains American Indian Reservation Lands* .....	No
Selected location contains a "Justice40 (CEJST)" disadvantaged community .....	Yes
Selected location contains an EPA IRA disadvantaged community .....	N/A

Report for 10 miles Ring Centered at 19.631376,-155.031689



# EJScreen Environmental and Socioeconomic Indicators Data

HEALTH INDICATORS					
INDICATOR	HEALTH VALUE	STATE AVERAGE	STATE PERCENTILE	US AVERAGE	US PERCENTILE
Low Life Expectancy	19%	16%	75	20%	41
Heart Disease	6	4.7	85	6.1	48
Asthma	9.6	8.8	80	10	43
Cancer	5.5	5.1	53	6.1	33
Persons with Disabilities	15.9%	11.2%	84	13.4%	70

CLIMATE INDICATORS					
INDICATOR	HEALTH VALUE	STATE AVERAGE	STATE PERCENTILE	US AVERAGE	US PERCENTILE
Flood Risk	51%	29%	80	12%	95
Wildfire Risk	0%	0%	0	14%	0

CRITICAL SERVICE GAPS					
INDICATOR	HEALTH VALUE	STATE AVERAGE	STATE PERCENTILE	US AVERAGE	US PERCENTILE
Broadband Internet	17%	11%	77	14%	68
Lack of Health Insurance	4%	4%	58	9%	25
Housing Burden	No	N/A	N/A	N/A	N/A
Transportation Access	Yes	N/A	N/A	N/A	N/A
Food Desert	Yes	N/A	N/A	N/A	N/A

Footnotes

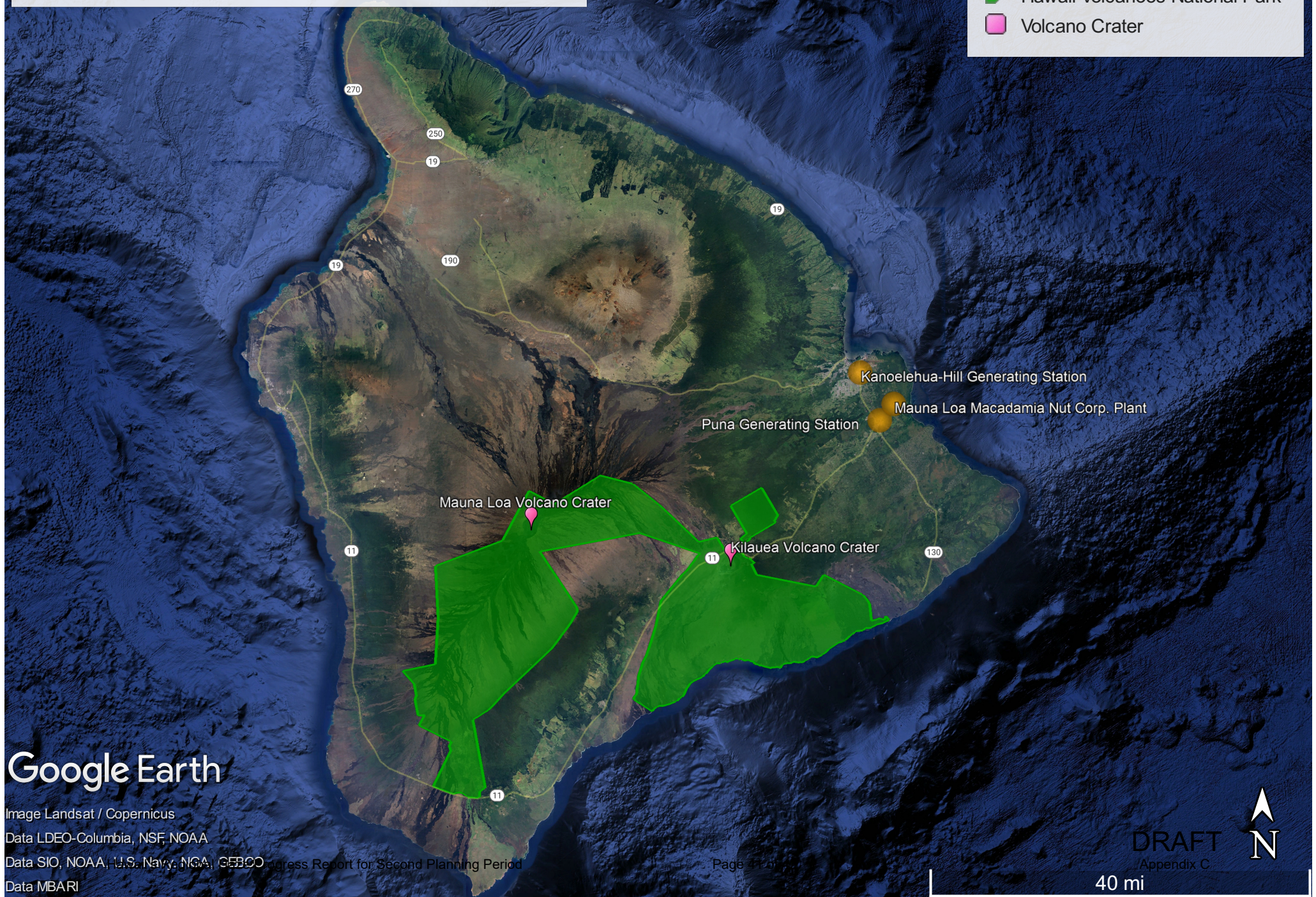
Report for 10 miles Ring Centered at 19.631376,-155.031689

# 2025 RHPR EJ Screen - Hawaii

Map showing EJ Screen analysis locations for the island of Hawaii

**Legend**

- Generating Station
- Hawaii Volcanoes National Park
- Volcano Crater



Google Earth

Image Landsat / Copernicus  
Data LDEO-Columbia, NSF, NOAA  
Data SIO, NOAA, U.S. Navy, NGA, GEBCO  
Data MBARI

DRAFT  
Appendix C





40 mi

# 2025 EJ Screen - Maui

Map showing EJ Screen analysis locations for the island of Maui

## Legend

-  Generating Station
-  Haleakala National Park



Google Earth

