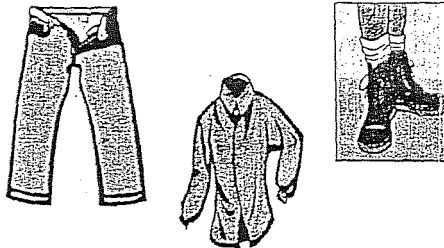


## KO HONO MALU'I KOE:

- Ngaue`aki `a ngaahi me`a milimili `oku fana pe mili ki hoto sino hange koe "OFF" `oku `ikai ke sai`ia ai `a e namu.
- Tui ma`u pe ha sote nima loloa, pea mo ha talusese loloa, tautautefito ki he taimi pongipongi pea moe houa efiafi, he koe taimi ia `oku puna holo lahi taha ai `a e ngaahi fu`u namu lalahi.



- Tapuni ma`u pe `a e ngaahi matapa `oku `ikai hano uaea namu.
- Fana ma`u `aki pe `a e ngaahi me`afana namu ke fakasi`isi`i `ae puna `a e namu ki fale.
- Manatu`i, `oku `ikai ke mamahi `a e u`u `a e namu, ka take lava`keke puke lahi ai.

Kapau `oku `iai ha`o fehu`i fekau`aki moe mahaki ni fetu`u taki ki ho`o toketa pe koe potungaue mo`ui, `i he ngaahi fika ko `ena `oku ha atu`ilalo.

- Big Island: 808-974-6001 or 808-322-4880
- Oahu: 808-586-8021
- Maui, Lanai, & Molokai: 808-873-3560
- Kauai: 808-241-3306

[health.hawaii.gov](http://health.hawaii.gov)

### Equal Rights

We provide access to our activities without regard to race, color, national origin (including language), age, sex, religion, or disability. Write or call the programs on the brochure or our departmental Affirmative Action Officer at 808-586-4616 within 180 days of a problem.

David Y. Ige

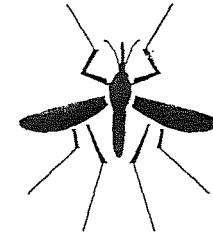
Governor of Hawaii

Virginia Pressler, M.D.

Director of Health

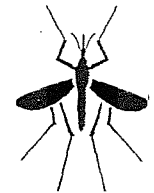


HAWAII STATE  
DEPARTMENT  
OF HEALTH



# Dengue

# Fever

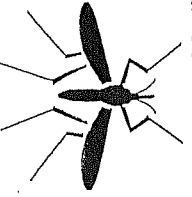


[health.hawaii.gov](http://health.hawaii.gov)

(Tongan)

## KOE HA`A E MOFI TENGI:

Koe Mofi Tengi koe mahaki ia`oku malava ke ma`u`e he tangata, i hono u`u kita`e he namu`oku`osi ma`u`ae mahaki ni.

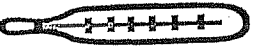


Koe mahaki ko ia koe Tengi`oku`ikai ke mafola hangatonu ia meha tangata ki ha tangata.

## KOE NGAAHI FAKA`ILONGA

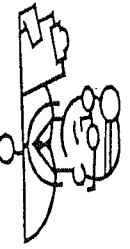
### `OE MOFI TENGI:

- Mofi lahi aupito
- Langa`ulu lahi
- Felangaaki hoto hokotangahui



- Iua
- Langa mata
- Veli

Fetu`utaki he vave taha ki ho`o toketa kapau`oku ke ma`u`a e ngaahi faka`ilonga ko ena`oku ha`i`olunga.

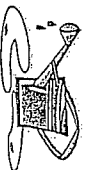


Fakapapai`i`oku ke hao koe mo ho family mei he Mofi Tengi. He`oku`ikai hano faito`o. Te ke lava pe`o hao`i ha`o fai`eni.

## TOKANGA`I`A E

### FANGANAMU:

- Fakamaha, pea fetongi`a e ngaahi me`a kotoa pe`oku malava ke ne tanaki`ae vai uha, hange koe nge`esi kapa, nge`esi hina, ngaahi kapa`akau, ngaahi toka`anga vai he fakatali, ngaahi pamu, ngaahi va`e me`alele, moe ngaahi me`a kotoa pe`oku ne malava ke tanaki ha toka`anga vai.



- Fakapapai`i ho`o ngaahi matapa moe ngaahi uaea namu kotoa pe`oku`osi ngaahi.
- Fakamaha pea fululu ma`u pe`a e ngaahi poulu`oku malava ke toka ai`a e vai tu`o taha`i he uike.

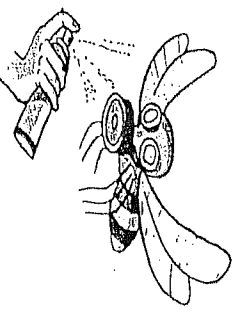


- Fakamaha pea Fetongi ma`u pe`a e ngaahi vaasi matala`i`akau tu`o taha he uike.



- Fana ma`u pe`a e ngaahi vai tuku`anga ika, ngaahi vai kaukau`oku`ikai ke faka`aonga`i, mo ha ngaahi fu`u koniteina lalahi`oku malava ke toka ai`a e vai`aki`a e ounisi 4 - 6 koa fufulu peleti. Fai pehe tu`o 2 - 3`i he aho.

- Fakapapai`i ma`u pe`oku`ufufu`a e ngaahi tangike vai,`aki ha uaea namu.



- Fakasi`isi`i`a e ngaahi fu`u namu lalahi`aki hono fana`aki`a e me`a fananamu.