

Site Specific Construction Best Management Practice (SSCBMP) Plan Template Workshop

Thursday, February 24, 2011 ~ 9-11 am & 1:15-3:15 pm

Wednesday, March 2, 2011 ~ 9-11 am

Department of Health State Laboratory Auditorium

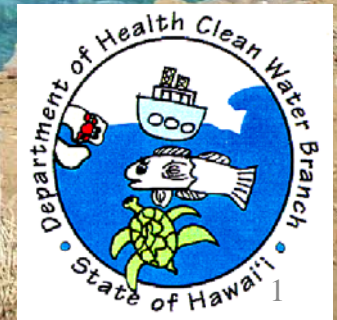
Thursday, March 3, 2011 ~ 9-11 am

SSFM Honolulu &

SSFM Maui & Hilo via VCC

Presented by the State of Hawaii,
Department of Health, Clean Water Branch

Presented by: Alec Wong, P.E.
Joanna L. Seto
Matthew Kurano



CWB Mission

The mission of the Clean Water Branch is to protect the public health of residents and tourists who recreate in and on Hawaii's coastal and inland water resources, and to also protect and restore inland and coastal waters for marine life and wildlife.



Agenda

Welcome Remarks

- Overview of National Pollutant Discharge Elimination System (NPDES) Regulations
- Notice of Intent Procedures for Construction Projects
- CWB Site-Specific Construction Best Management Practice (SSCBMP) Plan Template

Closing

A yellow CAT 345B excavator is positioned on a rocky, sandy shoreline. The excavator's arm and bucket are visible on the left side of the frame. The shoreline is composed of dark, jagged rocks and light-colored sand. To the right of the shore is a body of water with a greenish-blue hue, showing some white foam from waves. In the background, there are distant mountains under a clear blue sky. The text "National Pollutant Discharge Elimination System (NPDES) Regulations" is overlaid in the center of the image in a bold, yellow, serif font.

National Pollutant Discharge Elimination System (NPDES) Regulations

Federal Law and Regulation

NPDES

- Section 402 of Federal Water Pollution Control Act, as amended by the Clean Water Act of 1977 (commonly referred to as the Clean Water Act or CWA)
- Title 40, Code of Federal Regulations (40 CFR)

State Law and Regulation

NPDES

- Hawaii Revised Statutes, Chapter 342D, Water Pollution
- Hawaii Administrative Rules, Title 11, Chapter 54, Water Quality Standards
- Hawaii Administrative Rules, Title 11, Chapter 55, Water Pollution Control
- <http://www.hawaii.gov/health/about/rules/admrules.html>

Future changes to HAR, Chapter 11-55

- Include Hawaii Pesticide General Permit
- Update Concentrated Animal Feeding Operation Rules
- Construction Effluent Limitation Guidelines numeric limit and associated monitoring requirements applicable to large sites disturbing 10 & 20 acres or more at one time is delayed.

NPDES Permits for Construction Projects

- **Required if the project disturbs one (1) acre or more of land**
- **Individual NPDES Permit**
 - For construction projects which discharge to Class 1 or Class AA waters
 - Different procedures and fees apply – please contact CWB for additional details
- **NPDES General Permit**
 - For construction projects which discharge to Class 2 or Class A waters
 - Procedures will be presented during this workshop
 - *No changes to HAR, Chapter 11-55, Appendix A or C as of October 21, 2007 or June 15, 2009*

How to Obtain the Latest NPDES Regulations, Applications, Forms and Guidelines

Clean Water Branch Website

<http://www.hawaii.gov/health/environmental/water/cleanwater/index.html>



Notice of Intent Procedures for Construction Projects

NOI Procedures

To obtain coverage under the Construction Storm Water General Permit, submit the following:

1. CWB NOI General Form (Eff. 08/01/2007)
2. CWB Site-Specific Construction Best Management Practice (SSCBMP) Plan Template (Rev. ##/##/2011)
3. \$500 Filing Fee

NOI Procedures

Do not submit the hard copy of:

- CWB NOI General Form (pages 1 – 3)**
- CWB SSCBMP Plan**

For projects on ALL islands, submit only one (1) set which includes the original certification signature (see next slide).

NOI Procedures

For ALL islands, submit one (1) set of the following to CWB:

1. Transmittal or cover letter (hard copy)
2. Original Certification signature (hard copy of CWB NOI General Form page 4 only)
3. \$500 Filing Fee
4. CD or DVD containing the following:
 - CWB NOI General Form (pdf and xml format)
 - CWB SSCBMP Plan (pdf format)

Do not submit hard copies of the entire Form or Plan.

NOI Procedures

Initial NOI Submittal
via CD/DVD with Original Signed/Dated Item No. 7 of CWB NOI General Form (page 4) and \$500 Filing Fee

ApohaAquariumCWBNOI_General.pdf - Adobe Acrobat Professional

File Edit View Document Comments Forms Tools Advanced Window Help

Create PDF Combine Files Export Forms Review & Comment

Please fill out the following form. If you are a form author, choose Distribute Form in the Forms menu to send it to your recipients.

Certifying Person's Company or Agency: State of Hawaii

Certifying Department: Department of Health

Certifying Division: Environmental Management Division, Clean Water Branch

Certifying Phone No: 808 586-4410 Certifying Fax No: 808 586-4444

Certifying Person Email: TheDirectorOfHealth@-

For facilities/projects on the island of Oahu, submit one (1) copy of the CWB NOI General Form, applicable discharge form (e.g., CWB NOI Form C), and supporting documents with the certifying person's original signature and \$500 Filing Fee.

For facilities/projects on the island of Hawaii, submit three (3) copies of the CWB NOI General Form, applicable discharge form (e.g., CWB NOI Form C), and supporting documents. One copy of the CWB NOI General Form shall include the certifying person's original signature and \$500 Filing Fee.

For facilities/projects located on islands other than Oahu or Hawaii, submit three (3) copies of the CWB NOI General Form, applicable discharge form (e.g., CWB NOI Form C), and supporting documents. One copy of the CWB NOI General Form shall include the certifying person's original signature.

Submit by Email

Print Form

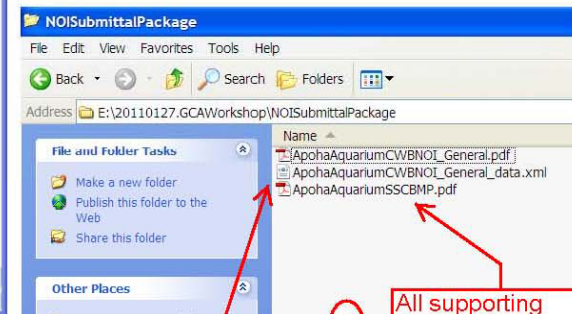
CWB NOI General Form

Page 4 of 4

For projects on ALL islands, submit the following in the NOI package:

1. Transmittal or cover letter (hard copy)
2. Original Certification signature (hard copy of CWB NOI General Form page 4 only)
3. \$500 Filing Fee
4. CD or DVD containing the following:
 - CWB NOI General Form (pdf and xml format)
 - Hawaii SSCBMP Plan Template (pdf format)

Do not submit hard copies of the Form or Plan.



DO NOT SEND EMAIL MESSAGE.

Copy .xml file from message to CD/DVD. Do not use the "save as xml" option.

All supporting information (maps, plans, approvals, etc.) should be included in the SSCBMP pdf file. DO NOT SUBMIT HARD COPIES OF THE SSCBMP Plan.

NOI Procedures

NOI and SSCBMPs review priorities:

- American Recovery and Reinvestment Act (ARRA) Projects
- Clean Energy Projects
- All other projects by date received

Indicate in your transmittal that your project meets one of the above criteria to ensure the priority review.

NOI Procedures

The following may cause the NOI to be incomplete:

- No electronic submittal of CWB NOI General Form
- Minimum required information not provided in CWB SSCBMP Plan
- No \$500 Filing Fee
- CWB NOI General Form not signed by correct certifying person

NOI Procedures

Who is the correct certifying person? The Person who meets the criteria listed in 40 CFR §122.22 (Eff. 07/01/2010) or HAR, Section 11-55-07.

For example from 40 CFR §122.22(a)(3):

“For a municipality, State, Federal, or other public agency. By either a principal executive officer or ranking elected official. For purposes of this section, a principal executive officer of a Federal agency includes: (i) The chief executive officer of the agency, or (ii) a senior executive officer having responsibility for the overall operations of a principal geographic unit of the agency (e.g., Regional Administrators of EPA).”

NOI Procedures

Who is the correct authorized representative? The named person or named position who meets the criteria listed in 40 CFR §122.22 (Eff. 07/01/2010) or HAR, Section 11-55-07.

For example from 40 CFR §122.22(b)(2):

“The authorization specifies either an individual or a position having responsibility for the overall operation of the regulated facility or activity such as the position of plant manager, operator of a well or a well field, superintendent, position of equivalent responsibility, or an individual or position having overall responsibility for environmental matters for the company,. . .”

NOI Procedures

The following may cause the additional information for the NOI to be incomplete.

- Does not reference correct NGPC File No.
- Transmittal does not include certification statement
- Transmittal is not from duly authorized representative or certifying person (need original signature)
- Responses do not address the CWB comments

The response should refer to the applicable CWB comment number and identify the page or sheet where the change was made.

NOI Procedures

Additional Information and/or Compliance Submittal
via CD/DVD with Original Signed/Dated Transmittal Cover Sheet only

ApohaAquariumCWBNOI_General.pdf - Adobe Acrobat Professional

Please fill out the following form. If you are a form author, choose Distribute Form in the Forms menu to send it to your recipients.

Certifying Person's Company or Agency: State of Hawaii

Certifying Department: Department of Health

Certifying Division: Environmental Management Division, Clean Water Branch

Certifying Phone No: 808 586-4410 Certifying Fax No: 808 586-4444

Certifying Person Email: TheDirectorOfHealth@...

For facilities/projects on the island of Oahu, submit one (1) copy of the CWB NOI General Form, applicable discharge form (e.g., CWB NOI Form C), and supporting documents with the certifying person's original signature and \$500 Filing Fee.

For facilities/projects on the island of Hawaii, submit three (3) copies of the CWB NOI General Form, applicable discharge form (e.g., CWB NOI Form C), and supporting documents. One copy of the CWB NOI General Form shall include the certifying person's original signature and \$500 Filing Fee.

For facilities/projects located on islands other than Oahu or Hawaii, submit three (3) copies of the CWB NOI General Form, applicable discharge form (e.g., CWB NOI Form C), and supporting documents. One copy of the CWB NOI General Form shall include the certifying person's original signature.

Submit by Email

Print Form

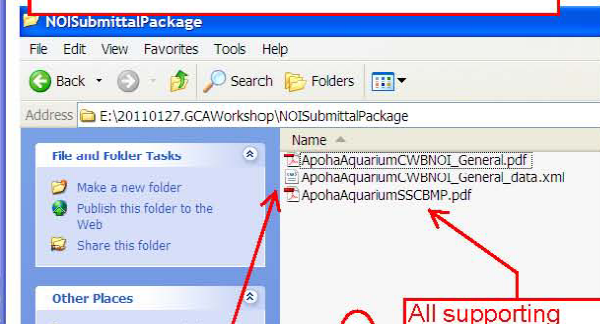
CWB NOI General Form

Page 4 of 4

For projects on ALL islands, submit the following in the additional information and/or compliance submittal:

1. Transmittal or cover letter (hard copy)
2. Original Certification signature (hard copy of CWB NOI General Form page 4 only if change to authorized representative)
4. CD or DVD containing the following:
 - CWB NOI General Form (pdf and xml format)
 - Hawaii SSCBMP Plan Template (pdf format)

Do not submit hard copies of the Form or Plan.



Copy .xml file from message to CD/DVD. Do not use the "save as xml" option.

All supporting information (maps, plans, approvals, etc.) should be included in the SSCBMP pdf file. DO NOT SUBMIT HARD COPIES OF THE SSCBMP Plan.

NOI Procedure Change

CWB SSCBMP Plan Template

(Rev. 03/01/2011) as of 03/03/2011

Site-Specific Construction Best Management Practice Plan
(Insert Project Name and Preparation Date)

Construction Best Management Practice Plan

Notice of General Permit Coverage (NGPC) File No. HIR10 _____
(if known)

Preparation Date ____ / ____ / ____

All sections of this template **MUST** be completed for National Pollutant Discharge Elimination System (NPDES) General Permit compliance.

If Section 3.0 - Best Management Practice Specifications/Details is not submitted with the initial submittal, a **complete Site-Specific Construction Best Management Practice (SSCBMP) Plan** must be submitted to the CWB for **comment no less than 30 calendar days prior to starting construction activities**. Your entire SSCBMP Plan (including Sections 2.0 and 3.0) will be reviewed in the order received and will not be expedited to accommodate your schedule. Written acceptance of a COMPLETED SSCBMP plan from the Clean Water Branch (CWB) must be received before the start of construction activities.

It is highly recommended that all sections of this template are completed in the initial submittal with the CWB Notice of Intent (NOI) General Form. Please refer to the [DOH-CWB Procedure for Changing Construction Site-Specific BMPs](#), dated July 20, 2010.

As of April 1, 2011, all applicants shall submit the plan using this template instead of the CWB-NOI Form C (Rev. 08/01/2007).

Table of Contents

NOI Procedure Change

- The CWB-NOI Form C has been replaced with the requirement to submit a completed CWB SSCBMP Plan Template.
- As of April 1, 2011, all applicants shall submit the plan using this template instead of the CWB-NOI Form C (Rev. 08/01/2007).
- See handout for blank SSCBMP template.
- **Most current** template will be available on the CWB website: <http://hawaii.gov/health/environmental/water/cleanwater/forms/genl-index.html>.

NOI Procedure Change

Site-Specific Construction Best Management Practice Plan
(Insert Project Name and Preparation Date)

Construction Best Management Practice Plan

Notice of General Permit Coverage (NGPC) File No. HIR10 _____
(if known)

Preparation Date ____ / ____ / ____

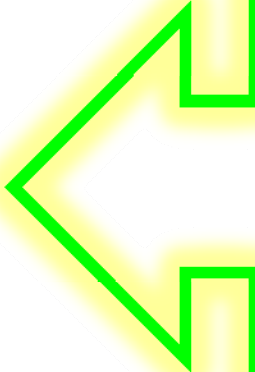
All sections of this template **MUST** be completed for National Pollutant Discharge Elimination System (NPDES) General Permit compliance.

If Section 3.0 - Best Management Practice Specifications/Details is not submitted with the initial submittal, **a complete Site-Specific Construction Best Management Practice (SSCBMP) Plan must be submitted to the CWB for comment no less than 30 calendar days prior to starting construction activities.** Your entire SSCBMP Plan (including Sections 2.0 and 3.0) will be reviewed in the order received and will not be expedited to accommodate your schedule. Written acceptance of a COMPLETED SSCBMP plan from the Clean Water Branch (CWB) must be received before the start of construction activities.

It is highly recommended that all sections of this template are completed in the initial submittal with the CWB Notice of Intent (NOI) General Form. Please refer to the [DOH-CWB Procedure for Changing Construction Site-Specific BMPs](#), dated July 20, 2010.

As of April 1, 2011, all applicants shall submit the plan using this template instead of the CWB-NOI Form C (Rev. 08/01/2007).

Table of Contents



Completion and submission of Section 3.0 with the initial NOI submittal will reduce the review period for compliance with the NGPC.

Individual NPDES Procedures

To obtain coverage under an Individual NPDES Permit, submit the following:

1. Transmittal or cover letter
2. CWB-NPDES Signatory and Certification Statement to NPDES Permit Applications (Rev. 11/20/2002)
3. CWB-Individual NPDES Form C (Rev. 09/30/2004) with responses for Item Nos. 1, 2, 3, 4, 5, and 16 only

Individual NPDES Procedures

To obtain coverage under an Individual NPDES Permit, submit the following (continued):

4. CWB SSCBMP Plan Template instead of responding to CWB-Individual NPDES Form C (Rev. 09/30/2004), Item Nos. 6, 7, 8, 9, 10, 11, 12, 13, 14, and 15
5. \$1,000 Filing Fee

Individual NPDES Procedures

(new slide 3/10/11)

For ALL islands, submit the following to CWB:

1. Transmittal or cover letter (hard copy)
2. Original signed CWB-NPDES Signatory and Certification Statement to NPDES Permit Applications (hard copy)
3. \$1000 Filing Fee
4. CD or DVD containing the following (pdf format):
 - CWB-NPDES Signatory and Certification Statement to NPDES Permit Applications
 - CWB-Individual NPDES Form C
 - CWB SSCBMP Plan

Individual NPDES Procedures

(revised slide 3/10/11)

5. The specified number of hard copies of all submitted documents:
 - For projects on the Island of Hawaii, submit two (2) sets
 - For projects on the Island of Kauai and Maui, submit one (1) set
 - For projects on all other islands, no additional sets

Individual NPDES Procedures

- CWB SSCBMP Plan Template for NPDES Applications to be developed.
- Replace “NGPC File No. HIR10 __ __ __ __” on ~~page 1~~ with “NPDES Permit No. HIS000__ __ __”

NGPC Compliance Changes

- If not already done with NOI, submit entire updated CWB SSCBMP Plan with site-specific information in Section 3. Do not submit only updated portions of plan.
- eDMR (electronic submittal of Discharge Monitoring Report Form) – not yet applicable to construction stormwater NGPC

Upcoming Changes

Upcoming Changes to Hawaii's NPDES Program

- Web-based forms in e-Permitting
 - Latitude & Longitude in Decimal Degrees
- Chargeable Filing Fee
- Electronic Signatures
- Searchable online database
- Total Maximum Daily Loads and Waste Load Allocations

Upcoming Changes

Latitude & Longitude in Decimal Degrees

<http://www.fcc.gov/mb/audio/bickel/DDDMSS-decimal.html>

The screenshot shows a web browser window with the title "Convert Latitude / Longitude in Degrees/Minutes/Seconds to/from Decimal (FCC) USA - Mozilla Firefox". The address bar shows the URL <http://www.fcc.gov/mb/audio/bickel/DDDMSS-decimal.html>. The page is part of the FCC's "REBOOT" initiative. The main content area is titled "Degrees, Minutes, Seconds and Decimal Degrees Latitude/Longitude Conversions". It includes a description of the utility and a section for "Degrees Minutes Seconds to Decimal Degrees" with input fields for latitude and longitude, and buttons for "Convert to Decimal" and "Clear Values". The results section shows "Results: Latitude:" and "Longitude:" with corresponding input fields. The left sidebar contains links to the Audio Division, Media Bureau Home, and various FCC divisions.

Convert Latitude / Longitude in Degrees/Minutes/Seconds to/from Decimal (FCC) USA - Mozilla Firefox

http://www.fcc.gov/mb/audio/bickel/DDDMSS-decimal.html

FCC Federal Communications Commission Search | RSS | Updates | E-Filing | Initiatives | Consumers | Find People REBOOT.FCC.GOV

Audio Division Degrees/Minutes/Seconds to/from Decimal Latitude/Longitude

(202)-418-2700 FCC > MB > Audio Division > Deg Min Sec / Decimal Calculations FCC site map

Fax: 202-418-1411

Search the FCC: Go Help

Advanced

Media Bureau Home Start Shortcut

Media Bureau Home

Bureau Documents

MB People

MB Divisions

Office of the Bureau Chief

Audio Division

Video Division

Policy Division

Industry Analysis Division

Engineering Division

Office of Communication & Industry Information

Management and Resources Staff

Audio Division Main Page Retrieve

Degrees, Minutes, Seconds and Decimal Degrees Latitude/Longitude Conversions

This utility permits the user to convert latitude and longitude between decimal degrees and degrees, minutes, and seconds. For convenience, a link is included to the National Geodetic Survey's NADCON program, which allows conversions between the NAD83 / WGS84 coordinate system and the older NAD27 coordinate system. NAD27 coordinates are presently used for broadcast authorizations and applications.

This utility requires that Javascript be enabled to perform the calculations. The [older non-Javascript version](#) remains available.

Degrees Minutes Seconds to Decimal Degrees

Enter Degrees Minutes Seconds latitude: [] [] []

Enter Degrees Minutes Seconds longitude: [] [] []

Convert to Decimal Clear Values

Results: Latitude: [] Longitude: []

Decimal Degrees to Degrees Minutes Seconds

NOI Issues from Attendees

- ☐ “Submit By Email” Issues
- ☐ Who signs certification of CWB SSCBMP Plan?
- ☐ I don’t have Site-Specific information yet. What do I do?
- ☐ What do I submit when the contractor is hired?
- ☐ Section 1.2 – why not person as listed in 6.a?

Contact Us:
Department of Health
Clean Water Branch
919 Ala Moana Blvd., Rm. 301
Honolulu, HI 96814-4920
Phone: (808) 586-4309
Fax: (808) 586-4352
cleanwaterbranch@doh.hawaii.gov

<http://www.hawaii.gov/health/environmental/water/cleanwater/index.html>