



non-functional silt fence





non-functional silt fence





Link-Belt







Staining on ground from contents of bin.



Holes located on bottom of bin



Contents of bin





Erosion Control at Kona Construction Site



exposed disturbed area



**choker material (~3/4" gravel)
used to stabilize exposed area**



**choker material used to
stabilize exposed area**



Gabion baskets

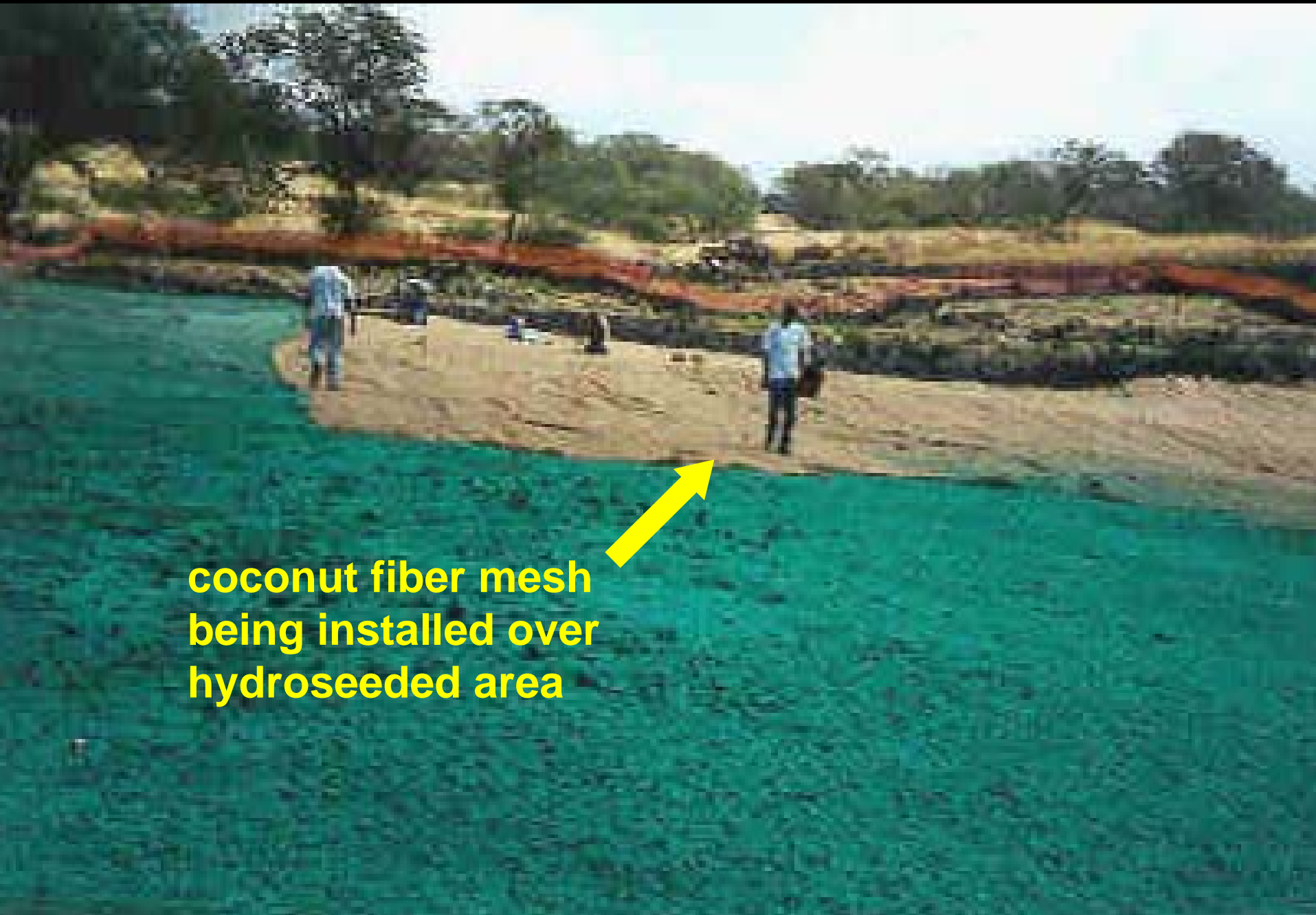


applied hydroseed



hydroseeded area

**coconut fiber mesh
being installed over
hydroseeded area**





grass growing

coconut fiber mesh

rock berm

**infiltration
ditch**





infiltration basin



infiltration basin



**gabion baskets
protecting entrance
to lava tube**



plug

**non-contiguous open trench
(plug installed every 300'
for mauka-makai trenches)**

Erosion Control at Kauai Construction Site







12/7/01



Upslope of vertical cut

12/7/01



Upslope of vertical cut

1/28/02



Above vertical cut

1/28/02



Above vertical cut

5/30/02



Detention Basin above vertical cut

10/29/02



**straw w/ netting
and hydroseed
applied to bare slope**

Detention Basin above vertical cut

12/18/02



Detention Basin above vertical cut

A close-up photograph showing a person's hand pointing towards a small, dark hole in a thick layer of straw mulch. The straw is dry and light brown, covering the ground. The hand is positioned at the top center of the frame, with the index finger pointing down into the hole. The background is a dense field of straw.

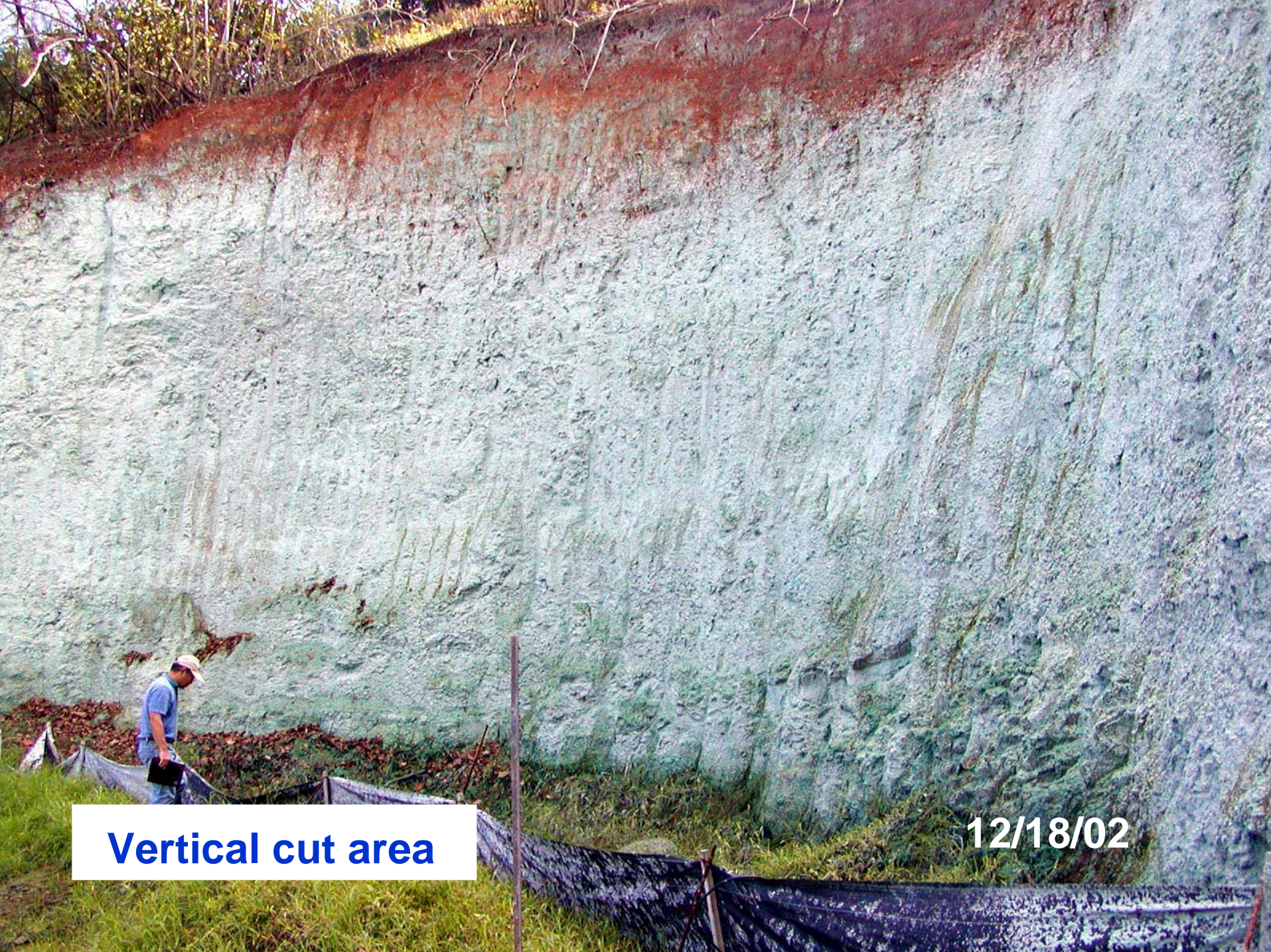
straw w/ netting

12/18/02



Vertical cut area

10/29/02



Vertical cut area

12/18/02



Old Access Road

12/7/01



Old Access Road

1/28/02



Old Access Road

5/30/02



silt fence

swale / check dam

gravel

Old Access Road

12/18/02



Plateau Area

1/28/02



Detention Basin in plateau area

10/29/02



Detention Basin in plateau area

10/29/02



Detention Basin in plateau area

10/29/02



Detention Basin in plateau area

10/29/02



~ 300,000 gallons

Detention Basin in plateau area

12/18/02



~100,000 gallons

Detention Basin in plateau area

12/18/02



check dam
w/ filter fabric



Rock Berm/Detention Basin

12/18/02





~750,000 Gallons

12/18/02

IV. Our Goal...

Our Goal...

**Keeping Hawaii's water clean for
“Beneficial uses” which include...**



Our Goal...

Recreation...



Our Goal...

...and the protection and propagation of fish and aquatic life.



Resources

Where to Get More Information:

- **Hawaii Revised Statutes 342D,
Water Pollution.**
- **Hawaii Administrative Rules 11-54,
Water Quality Standards**
- **Hawaii Administrative Rules 11-55,
Water Pollution Control**

Resources

Where to Get More Information:

EPA's Website:

- **NPDES Program:** <http://cfpub.epa.gov/npdes>
- **NPDES Storm Water Program:**
<http://www.epa.gov/npdes/stormwater>
- **Office of Enforcement and Compliance Assistance:** <http://es.epa.gov/oeca/sector>

Resources

Where to Get More Information:

Others Websites:

- **City and County of Honolulu:**
<http://www.cleanwaterhonolulu.com>
http://www.cleanwaterhonolulu.com/reports/BMP_manual.pdf
- **The Construction Industry Compliance Assistance Center:**
<http://www.CICA.com>
- **ASCE BMP Effectiveness Database:**
<http://www.bmpdatabase.org>

Resources

For More Information, Contact:



Clean Water Branch

919 Ala Moana Blvd., Rm. 301

Honolulu, Hawaii 96814-4920

Phone: 586-4309

Fax: 586-4352

<http://www.hawaii.gov/health/environmental/water/water/cleanwater/index.html>