

PM_{2.5} (ug/m³) Data for December 31, 2013

PM_{2.5} Particulate matter that is 2.5 microns or less in aerodynamic diameter

[Preliminary Data Subject to Change](#)

Oahu Air Monitoring Stations

Time	Honolulu	Pearl City	Kapolei	Sand Island
	1250 Punchbowl St.	860 4th St.	Kapolei Business Park	Sand Island Access Rd.
1:00 a.m.	5	2	5	2
2:00 a.m.	5	0	2	1
3:00 a.m.	4	0	3	4
4:00 a.m.	5	3	6	6
5:00 a.m.	7	1	4	4
6:00 a.m.	6	1	4	4
7:00 a.m.	5	3	4	6
8:00 a.m.	7	4	3	8
9:00 a.m.	9	5	5	12
10:00 a.m.	7	6	5	9
11:00 a.m.	6	29	5	3
12:00 noon	7	No data	17	3
1:00 p.m.	5	No data	7	5
2:00 p.m.	5	14	5	3
3:00 p.m.	6	9	0	2
4:00 p.m.	9	5	0	No data
5:00 p.m.	8	7	2	6
6:00 p.m.	4	11	2	5
7:00 p.m.	7	11	3	7
8:00 p.m.	8	16	3	10
9:00 p.m.	7	17	5	8
10:00 p.m.	9	26	8	9
11:00 p.m.	12	32	6	12
12:00 midnight	24	42	10	17
24 hour average^a	7	11	5	6

^a The federal standard is 35 ug/m³ **averaged over 24 hours**

PM_{2.5} (ug/m³) Data for January 1, 2014

PM_{2.5} Particulate matter that is 2.5 microns or less in aerodynamic diameter

[Preliminary Data Subject to Change](#)

Oahu Air Monitoring Stations

Time	Honolulu 1250 Punchbowl St.	Pearl City 860 4th St.	Kapolei Kapolei Business Park	Sand Island Sand Island Access Rd.
1:00 a.m.	28	183	15	26
2:00 a.m.	44	18	92	40
3:00 a.m.	15	7	27	25
4:00 a.m.	14	6	8	16
5:00 a.m.	10	6	6	10
6:00 a.m.	6	8	-2	10
7:00 a.m.	4	6	1	9
8:00 a.m.	5	8	7	8
9:00 a.m.	10	9	4	8
10:00 a.m.	10	9	3	7
11:00 a.m.	15	11	6	9
12:00 noon	15	11	3	8
1:00 p.m.	10	6	1	3
2:00 p.m.	7	2	1	4
3:00 p.m.	10	5	3	9
4:00 p.m.	8	8	6	9
5:00 p.m.	5	8	3	8
6:00 p.m.	9	8	1	8
7:00 p.m.	12	10	2	7
8:00 p.m.	10	11	3	11
9:00 p.m.	9	9	5	12
10:00 p.m.	9	8	3	9
11:00 p.m.	11	8	3	10
12:00 midnight	15	8	3	15
24 hour average^a	12	16	9	12

^a The federal standard is 35 ug/m³ *averaged over 24 hours*

PM_{2.5} (ug/m³) Data for December 31, 2013

PM_{2.5} Particulate matter that is 2.5 microns or less in aerodynamic diameter

[Preliminary Data Subject to Change](#)

Neighbor Island Air Monitoring Stations

Time	Hilo	Kona	Mt. View	Pahala	Ocean View	Waikoloa	Kihei	Paia	Niumalu
	Waianuenue Ave.	Konawaena H.S.	Volcano Road	Kau/Pahala School	Ocean View Fire Sta.		Hale Piilani Park		2342 Hulemalu Rd.
1:00 a.m.	2	12	-3	6	22	-1	10	8	1
2:00 a.m.	4	10	-3	4	18	1	7	1	4
3:00 a.m.	2	10	3	8	17	-2	8	-5	4
4:00 a.m.	3	12	9	12	12	-2	4	-3	2
5:00 a.m.	5	13	6	11	12	0	-3	-1	3
6:00 a.m.	4	13	0	13	11	2	-3	1	2
7:00 a.m.	6	12	-2	11	12	4	-1	1	1
8:00 a.m.	7	12	0	9	12	4	1	-5	3
9:00 a.m.	6	14	0	9	8	1	2	-6	0
10:00 a.m.	5	14	0	5	9	-1	5	0	1
11:00 a.m.	4	18	-1	4	19	-1	7	4	6
12:00 noon	4	11	-1	3	19	5	6	3	6
1:00 p.m.	6	11	2	1	16	10	7	-1	3
2:00 p.m.	7	12	3	3	20	11	5	-2	2
3:00 p.m.	2	16	3	4	16	8	4	2	5
4:00 p.m.	0	10	0	3	17	10	3	6	5
5:00 p.m.	2	11	1	3	28	14	-1	6	4
6:00 p.m.	4	11	2	3	15	17	4	6	4
7:00 p.m.	5	9	3	58	18	13	8	9	8
8:00 p.m.	6	20	6	2	18	17	6	11	13
9:00 p.m.	10	21	26	4	22	22	6	33	8
10:00 p.m.	10	21	72	6	29	18	8	23	4
11:00 p.m.	13	19	77	85	27	15	4	27	50
12:00 midnight	10	19	237	10	22	23	28	8	18
24 hour average^a	5	14	18	12	17	8	5	5	7

^a The federal standard is 35 ug/m³ **averaged over 24 hours**

PM_{2.5} (ug/m³) Data for January 1, 2014

PM_{2.5} Particulate matter that is 2.5 microns or less in aerodynamic diameter

[Preliminary Data Subject to Change](#)

Neighbor Island Air Monitoring Stations

Time	Hilo	Kona	Mt. View	Pahala	Ocean View	Waikoloa	Kihei	Paia	Niumalu
	Waianuenue Ave.	Konawaena H.S.	Volcano Road	Kau/Pahala School	Ocean View Fire Sta.		Hale Piilani Park		2342 Hulemalu Rd.
1:00 a.m.	47	23	193	158	22	20	5	4	17
2:00 a.m.	7	15	28	4	15	20	7	7	7
3:00 a.m.	5	18	0	6	19	13	8	13	5
4:00 a.m.	3	18	0	8	10	17	9	8	2
5:00 a.m.	2	24	1	8	12	16	6	5	4
6:00 a.m.	4	20	4	11	12	17	6	10	5
7:00 a.m.	8	20	3	10	10	18	8	15	1
8:00 a.m.	16	22	6	17	7	16	6	12	-1
9:00 a.m.	16	19	11	74	10	18	7	6	2
10:00 a.m.	15	14	5	8	13	12	9	2	5
11:00 a.m.	11	16	4	5	18	11	4	-3	5
12:00 noon	5	19	5	3	22	12	16	10	7
1:00 p.m.	-2	17	0	3	22	12	-1	12	5
2:00 p.m.	-3	15	-3	4	18	12	-2	7	1
3:00 p.m.	0	13	-1	1	13	13	4	8	2
4:00 p.m.	3	16	2	2	17	10	10	11	4
5:00 p.m.	4	16	3	5	24	11	8	7	6
6:00 p.m.	4	12	2	3	22	13	7	6	7
7:00 p.m.	3	12	0	7	24	15	18	5	6
8:00 p.m.	7	21	0	5	18	7	7	12	7
9:00 p.m.	10	19	0	-1	21	7	4	11	8
10:00 p.m.	8	18	0	0	14	10	1	25	6
11:00 p.m.	6	20	2	0	11	12	5	1	6
12:00 midnight	4	No data	5	0	10	11	15	3	7
24 hour average^a	8	18	11	14	16	13	7	8	5

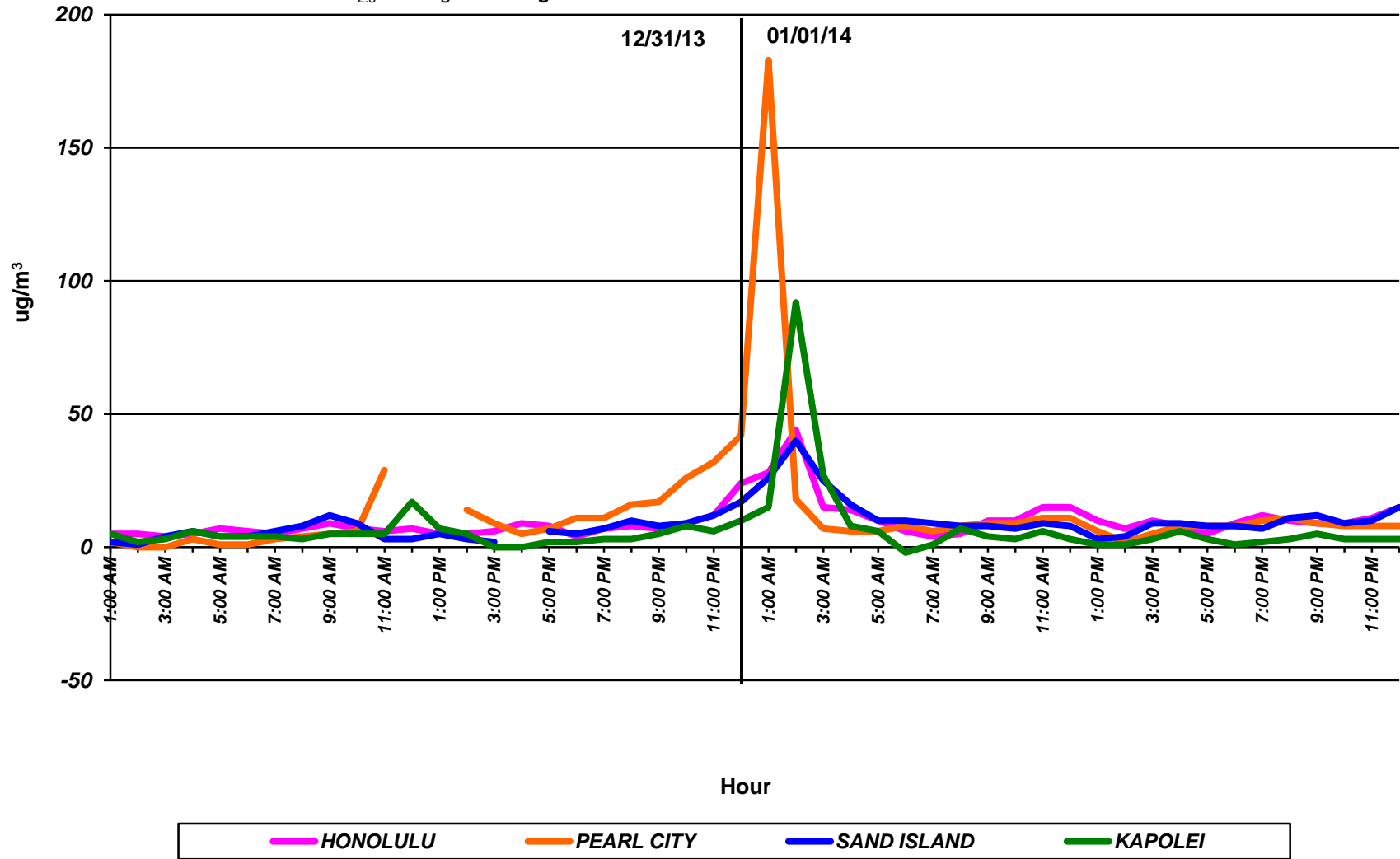
^a The federal standard is 35 ug/m³ *averaged over 24 hours*

1-Hour PM_{2.5} (ug/m³) Data for December 31, 2013 and January 1, 2014

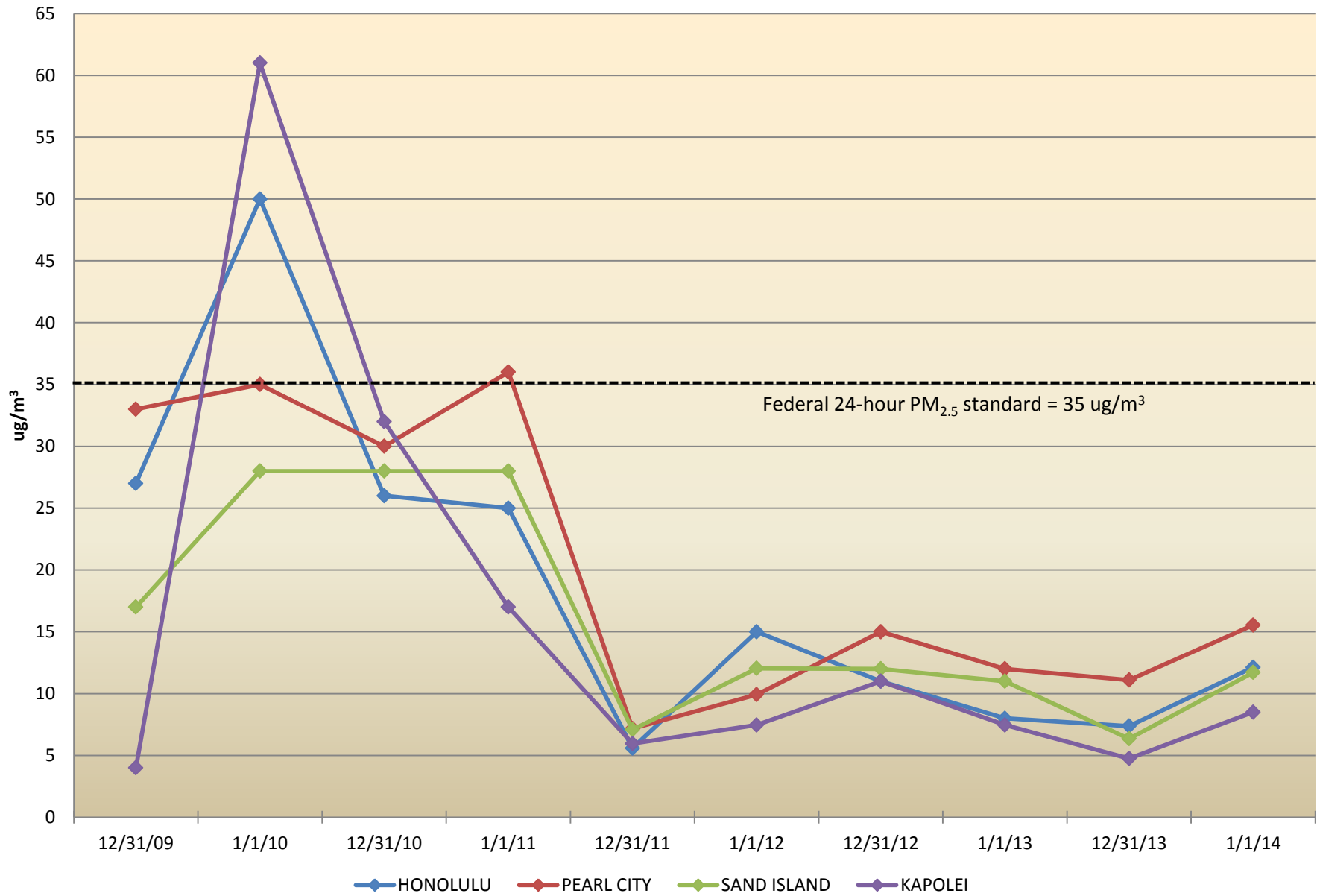
Oahu

(Preliminary Data Subject to Change)

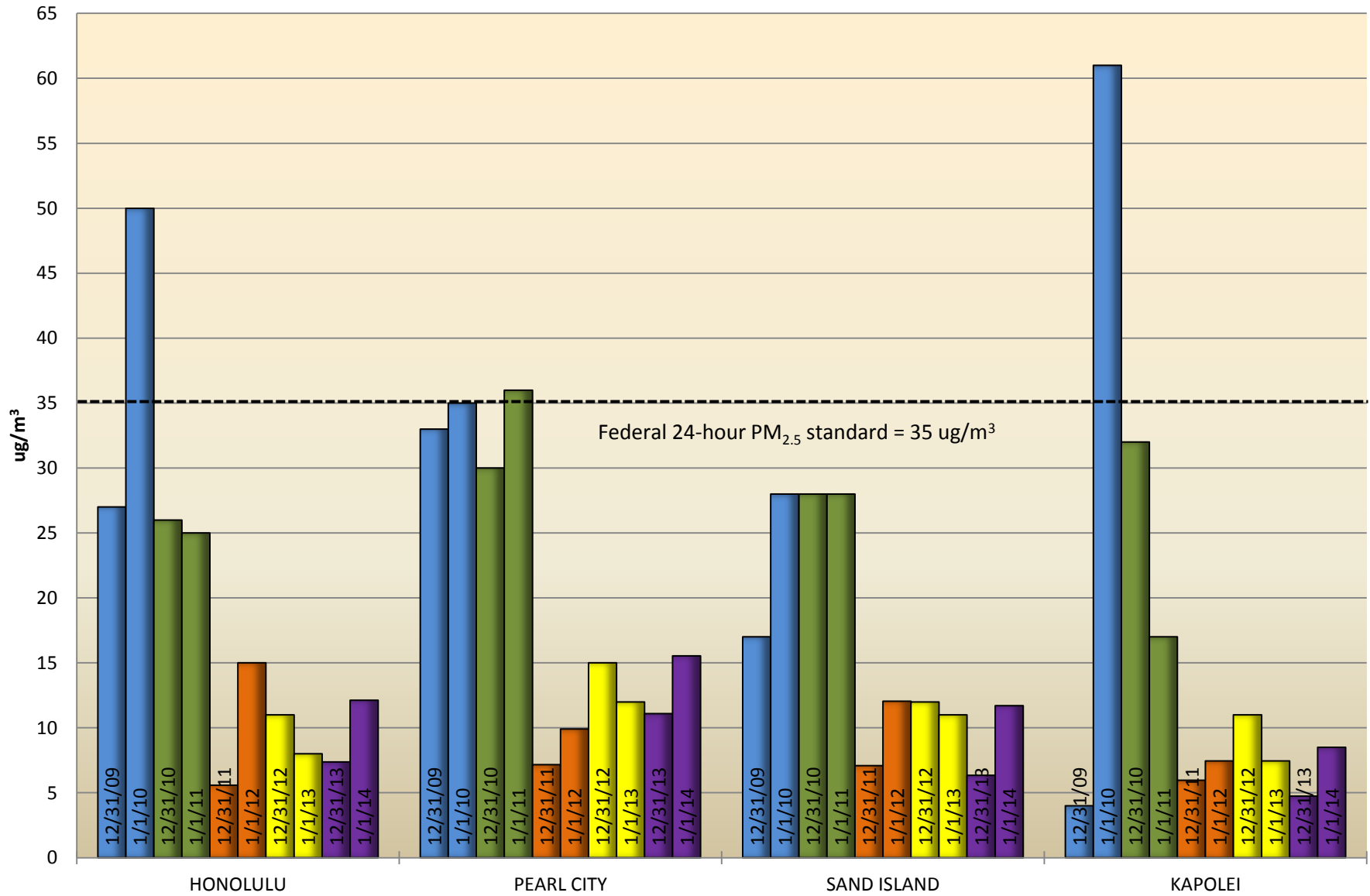
There is no state or federal 1-hour standard for PM_{2.5}
The federal standard for PM_{2.5} is 35 ug/m³ averaged over 24 hours.



24-Hour PM_{2.5}: 2010 to 2014 New Year's Fireworks Data



24-Hour PM_{2.5}: 2010-2014 New Year's Data Comparison Oahu Stations



PM₁₀ (ug/m³) Data for December 31, 2013

PM₁₀ Particulate matter that is 10 microns or less in aerodynamic diameter

Preliminary Data Subject to Change

Air Monitoring Stations			
Time	Honolulu 1250 Punchbowl St.	Pearl City 860 4th St.	Kapolei Kapolei Business Park
1:00 a.m.	8	17	8
2:00 a.m.	9	16	9
3:00 a.m.	11	9	6
4:00 a.m.	15	16	6
5:00 a.m.	10	18	9
6:00 a.m.	9	17	12
7:00 a.m.	11	16	13
8:00 a.m.	17	21	18
9:00 a.m.	15	29	16
10:00 a.m.	11	19	13
11:00 a.m.	18	129	18
12:00 noon	14	No data	25
1:00 p.m.	16	91	23
2:00 p.m.	9	114	17
3:00 p.m.	7	22	17
4:00 p.m.	18	19	17
5:00 p.m.	15	20	23
6:00 p.m.	18	26	18
7:00 p.m.	15	20	25
8:00 p.m.	18	31	11
9:00 p.m.	17	26	13
10:00 p.m.	21	42	14
11:00 p.m.	24	43	20
12:00 midnight	32	73	23
24 hour average^a	15	36	16

^a State and Federal Standard is 150 ug/m³ *averaged over 24 hours*

PM₁₀ (ug/m³) Data for January 1, 2014

PM₁₀ Particulate matter that is 10 microns or less in aerodynamic diameter

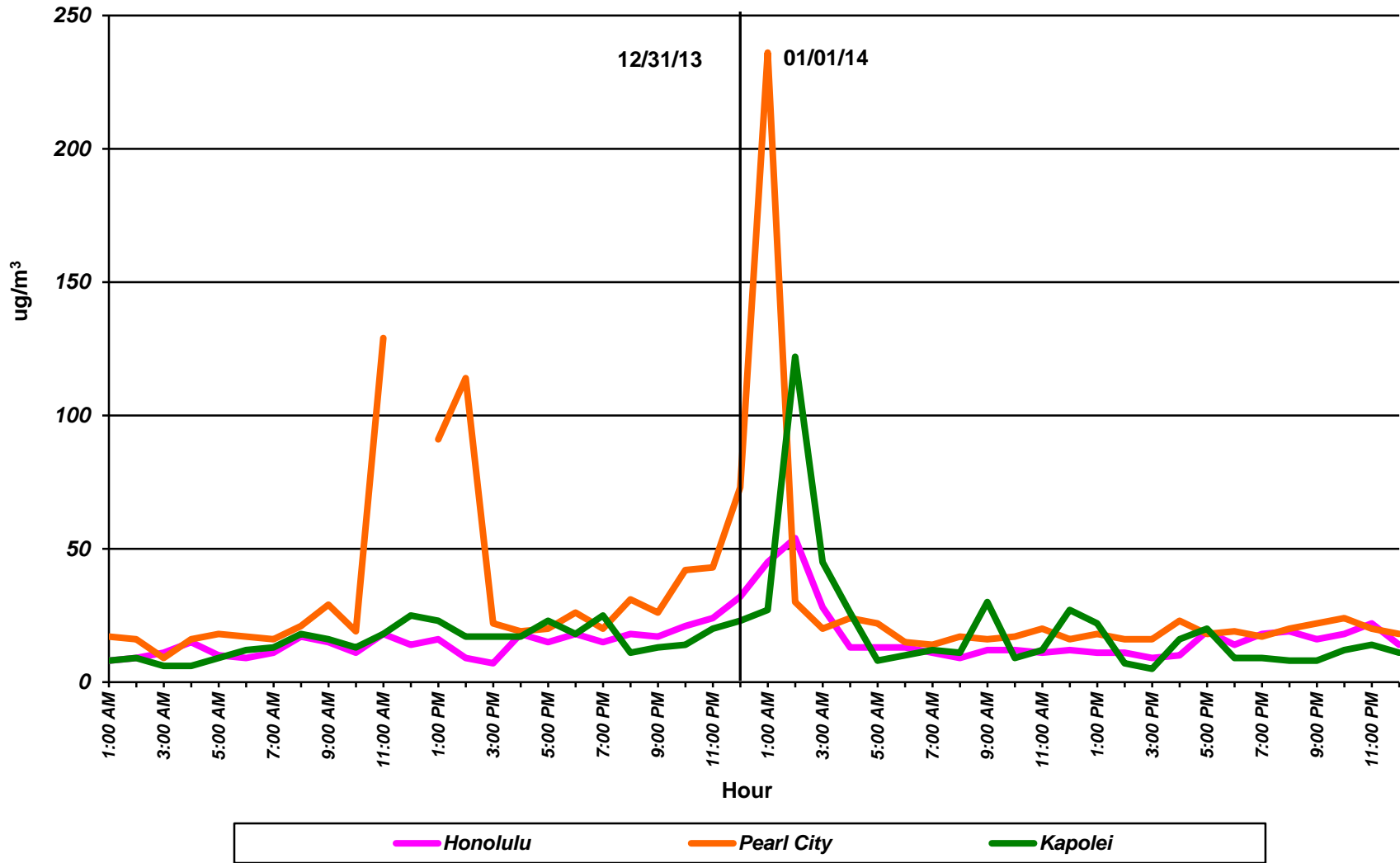
Preliminary Data Subject to Change

Air Monitoring Stations			
Time	Honolulu 1250 Punchbowl St.	Pearl City 860 4th St.	Kapolei Kapolei Business Park
1:00 a.m.	45	236	27
2:00 a.m.	54	30	122
3:00 a.m.	28	20	45
4:00 a.m.	13	24	26
5:00 a.m.	13	22	8
6:00 a.m.	13	15	10
7:00 a.m.	11	14	12
8:00 a.m.	9	17	11
9:00 a.m.	12	16	30
10:00 a.m.	12	17	9
11:00 a.m.	11	20	12
12:00 noon	12	16	27
1:00 p.m.	11	18	22
2:00 p.m.	11	16	7
3:00 p.m.	9	16	5
4:00 p.m.	10	23	16
5:00 p.m.	19	18	20
6:00 p.m.	14	19	9
7:00 p.m.	18	17	9
8:00 p.m.	19	20	8
9:00 p.m.	16	22	8
10:00 p.m.	18	24	12
11:00 p.m.	22	20	14
12:00 midnight	14	18	11
24 hour average^a	17	28	20

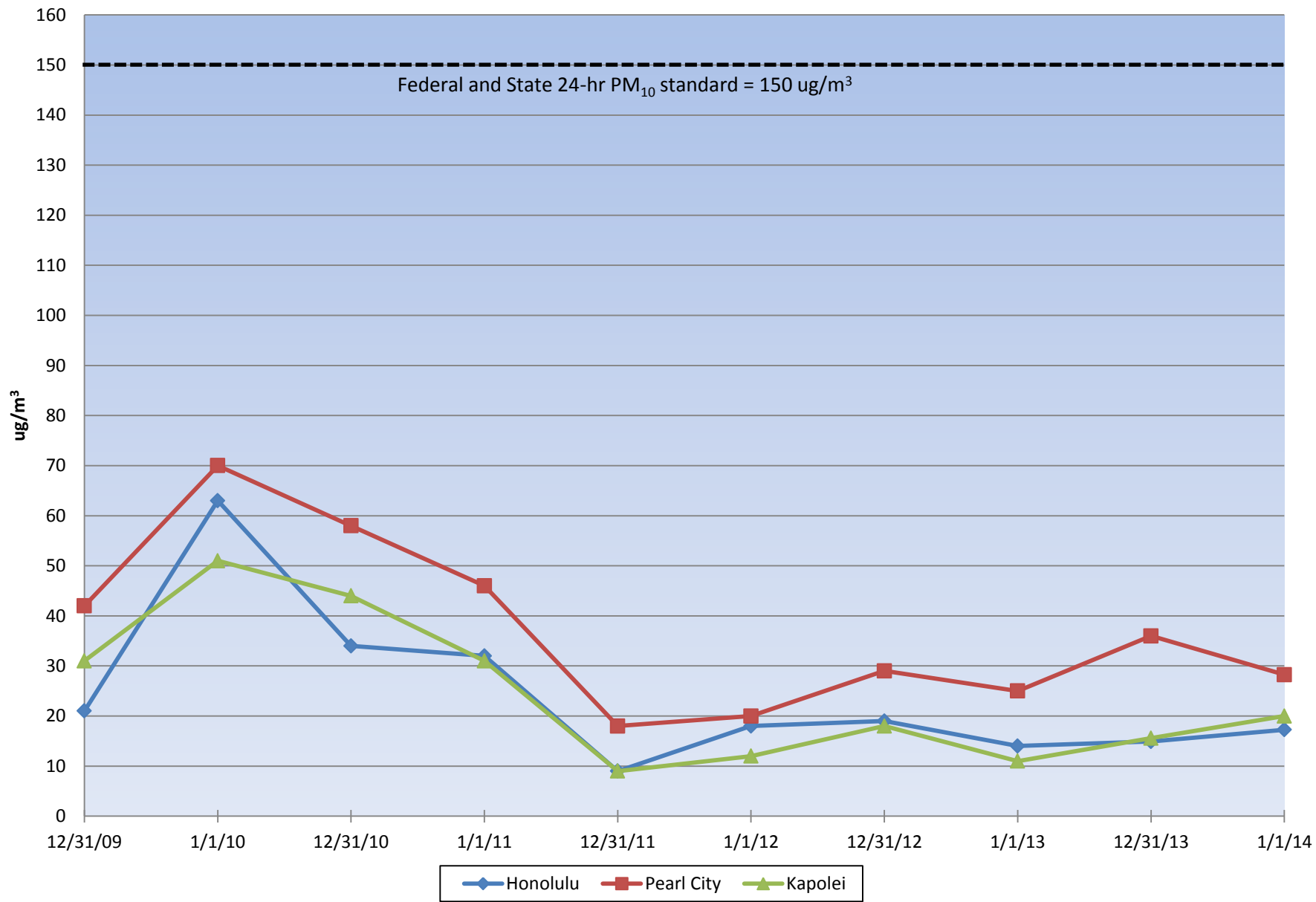
^a State and Federal Standard is 150 ug/m³ **averaged over 24 hours**

1-Hour PM₁₀ (ug/m³) Data for December 31, 2013 and January 1, 2014 (Preliminary Data Subject to Change)

There is no state or federal 1-hour standard for PM₁₀
The state and federal standard for PM₁₀ is 150 ug/m³ averaged over 24 hours.



24-Hour PM₁₀: 2010 to 2014 New Year's Fireworks Data

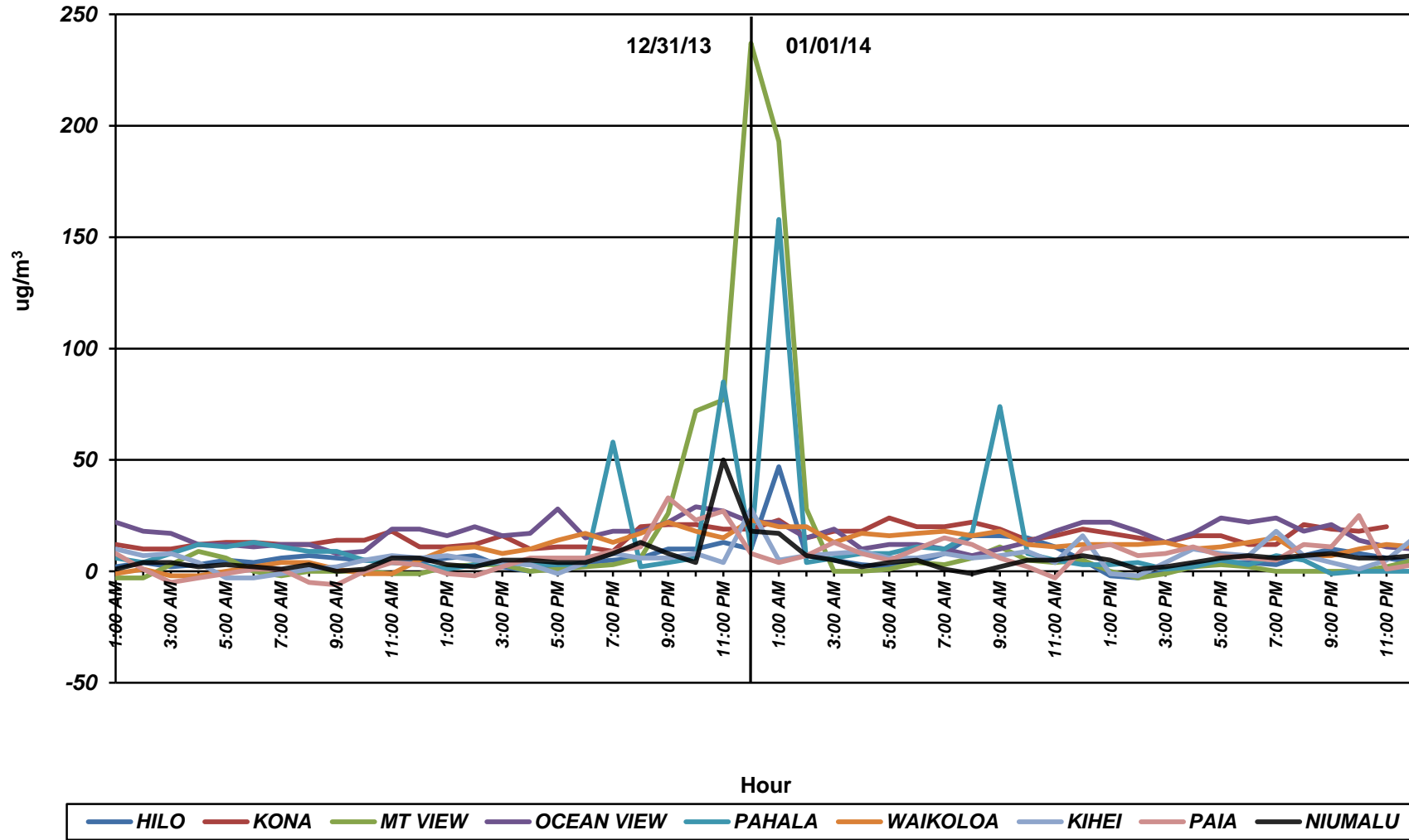


1-Hour PM_{2.5} (ug/m³) Data for December 31, 2013 and January 1, 2014

Hawaii Island, Maui, and Kauai

(Preliminary Data Subject to Change)

There is no state or federal 1-hour standard for PM_{2.5}
 The federal standard for PM_{2.5} is 35 ug/m³ averaged over 24 hours.



**24-Hour PM_{2.5} Averages (ug/m³) 12/31/13 and 1/1/14:
Hawaii Island, Maui and Kauai**
Preliminary Data Subject to Change

