

If you are bothered
by smoke from
someone who is
open burning, call:
Kauai - 241-1711
Maui - 244-6400
Hawaii - 935-3311
Oahu only- 911

For more information
on the Department of
Health Administrative
Rules for open burning
contact the Clean Air
Branch in:

Oahu: 586-4200
Kauai: 241-3323
Hilo: 933-0404
Kona: 322-1965
Maui, Molokai or
Lanai: 984-8234

or write to:
Clean Air Branch
P.O. Box 3378
Honolulu, HI 96801

[www.http://health.hawaii.gov/cab/](http://health.hawaii.gov/cab/)

DEPARTMENT OF HEALTH
Clean Air Branch
P.O. Box 3378
Honolulu, HI 96801-3378



For more information, contact the Clean Air Branch: Oahu: 586-4200
Maui: 984-8234 Kauai: 241-3323 East Hawaii: 933-0404 West Hawaii: 322-1965



OPEN BURNING
IS NOT ALLOWED

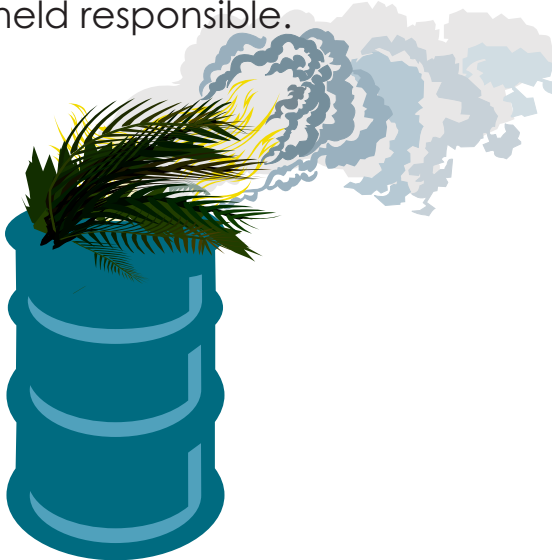
August 2013

OPEN BURNING

Section 11-60.1-51, Hawaii Administrative Rules (HAR), Subchapter 3, defines open burning as *“the burning of any matter in such a manner that the products of combustion resulting from the burning are emitted directly into the ambient air without passing through an adequate stack or flare.”*

Open burning is generally prohibited except for activities such as cooking, fire training, and agricultural burning with a valid permit. Other types of open burning require approval from the department. The rules regulating open burning are Hawaii Administrative Rules (HAR) Section 11-60.1 Subchapter 3.

Violations of open burning rules may result in fines of up to \$10,000 per day for each offense. Owners, operators or managers of the property, businesses, or industries where open burning occurs will be held responsible.



Agricultural Burning

To burn green waste generated from agricultural operations, legitimate businesses must obtain an Agricultural Burning Permit (AGP) from the Department of Health.

Agricultural burning may be further restricted by government agencies in times of drought, fire hazards or “NO BURN DAYS”.

WHAT YOU CAN DO:

Recycle acceptable products at your nearest community collector.

Compost your yard waste or take it to the nearest refuse convenience center.

Consider buying practices that will reduce both excess product and packaging.

Donate old but clean clothes, readable magazines and books and working appliances.

Look at your county’s website, or at www.opala.org, for useful information on recycling, bulky item or green waste pickup and hazardous waste disposal.