

# The Burden of Cardiovascular Disease in Hawaii 2007



HAWAII STATE DEPARTMENT OF HEALTH

# The Burden of Cardiovascular Disease in Hawaii 2007

For more information or additional copies of this report contact:

Hawaii State Department of Health  
Community Health Division  
1250 Punchbowl St, Room 218  
Honolulu, HI 96813  
808-586-4131  
FAX 808-586-4791



**Chiyome Leinaala Fukino, M.D.**  
**Director, Hawaii State Department of Health**

Joseph Balabis, MPH  
Ann Pobutsky, PhD  
Kathleen Kromer Baker, PhD - Hawaii Health Survey, Chairperson  
Caryn Tottori, MA - Vital Statistics  
Florentina Salvail, MS - BRFSS Project Director

Cover image courtesy of Hawaii Visitors and Convention Bureau  
Anthurium image courtesy of Virginia Wesleyan College

# MESSAGE FROM THE DIRECTOR OF HEALTH

Aloha Kakou,

The Hawaii Department of Health is pleased to present the publication of *The Burden of Cardiovascular Disease in Hawaii 2007*. The report, produced under the leadership of the Community Health Division, compiles surveillance information, vital statistics, and other various data sources into a comprehensive document.

Cardiovascular disease (CVD) is the leading cause of death in Hawaii and in the nation. It poses a significant public health burden to the people of Hawaii. In 2005, more than 2,900 people died from CVD in Hawaii. It is also responsible for activity limitations due to disability, a large portion of health care costs including hospitalization, and indirect costs due to lost wages and decreased productivity. Healthcare costs associated with CVD are staggering. According to the Hawaii Health Information Corporation, total charges associated with hospitalizations due to a primary diagnosis of CVD amounted to more than \$604 million in 2005 alone.

*The Burden of Cardiovascular Disease in Hawaii 2007* provides information on the prevalence of CVD, associated risk factors and risk markers, hospitalizations, and deaths in the state of Hawaii. This report is a valuable resource for use in planning programs and initiatives in communities most affected by this disease.

CVD is a serious, common, and very costly disease, but by working together, we can create a healthier Hawaii. I invite you to join us in that effort.

Kuikahi kakou i ka puuwai

*Let us work together from the heart*

Chiyome Leinaala Fukino, M.D.

Director, Hawaii State Department of Health

# ACKNOWLEDGEMENTS

This report would not have been possible without the support and hard work of the following people:

## CARDIOVASCULAR DISEASE (CVD) DATA WORK GROUP & COMMUNITY PARTNERS

### **American Heart Association/American Stroke Association:**

Lori Suan, Director-State Health Alliance

### **Hawaii Health Information Corporation**

Jill Miyamura, Vice President

### **Hawaii State Department of Health**

#### Community Health Division (CHD)

Barbara Yamashita, Division Chief

Ann Pobutsky, Chronic Disease  
Epidemiologist

Lisa Nakao, Planner

Joseph Balabis, Public Health Prevention  
Specialist

#### *Chronic Disease Management and Control Branch:*

Danette Wong Tomiyasu, Branch Chief

Sandi Chang, Chronic Disease Supervisor

Robert Hirokawa, Diabetes Chronic Disease  
Epidemiologist

#### Developmental Disabilities Division (DDD)

##### *Disability Supports Branch:*

Lester Matsumoto, Neurotrauma Supports

#### Emergency Medical Services

Linda Rosen, Branch Chief

Clayton Chan, Program Specialist

Jenny Gong, Research Statistician

#### Office of Health Planning (OHP)

Florentina Salvail, Research Statistician

Dung-Hanh Nguyen, Research Statistician  
Office of Health Status Monitoring (OHSM)

Alvin Onaka, Chief

Kathleen Kromer Baker, Research  
Statistician

Caryn Tottori, Research Statistician

Brian Horiuchi, Supervisor Statistics and  
Surveys, Statistician

#### Public Health Block Grants Management

Betty Wood, Preventive Health  
Epidemiologist and Block Grants Manager

#### **North Hawaii Outcomes Project**

Sharon Vitousek, Director

#### **Rehabilitation Hospital of the Pacific**

Elzy Kaina, Case Manager

#### **The Queen's Medical Center**

##### Neuroscience Institute

Karen Seth, Manager

Susan Asai, Clinical Research Coordinator

#### **University of Hawaii John A Burns School of Medicine**

##### Department of Family and Community Medicine

Andrew Ten Have, Assistant Clinical  
Professor

#### *Suggested Citation:*

J. Balabis, A. Pobutsky, K. Kromer Baker, C. Tottori, and F. Salvail. The Burden of Cardiovascular Disease in Hawaii 2007. Hawaii State Department of Health, 2007.

# TABLE OF CONTENTS

EXECUTIVE SUMMARY .....	7
INTRODUCTION AND PURPOSE .....	8
BACKGROUND - CVD IN HAWAII.....	8
METHODS - DATA SOURCES.....	10
Vital Records .....	10
Hawaii Health Survey (HHS).....	10
Behavioral Risk Factor Surveillance System (BRFSS) .....	11
Hawaii Health Information Corporation (HHIC).....	11
METHODS - DATA TERMINOLOGY .....	12
CVD MORTALITY.....	14
CVD PREVALENCE .....	19
CVD RISK FACTORS & RISK MARKERS.....	20
High Blood Pressure .....	21
High Cholesterol .....	23
Smoking .....	25
Physical Inactivity.....	27
Overweight/Obesity.....	28
Diabetes.....	32
CVD-ASSOCIATED DISABILITIES.....	35
HOSPITAL DISCHARGES AND CHARGES.....	36
NEXT STEPS/CONCLUSIONS.....	39
REFERENCES.....	41
APPENDICES.....	42

## LIST OF FIGURES

Figure 1. Leading Causes of Death in Hawaii, 2005 .....	14
Figure 2. Trends in Major Cardiovascular Diseases Mortality Rate by County, Hawaii 1999-2005* .....	16
Figure 3. Mortality Rate for Major Cardiovascular Diseases by Selected Characteristics, Hawaii 2005* .....	16
Figure 4. Trends in Coronary Heart Disease Mortality Rate by County, Hawaii 1999-2005* .....	16
Figure 5. Mortality Rate for Coronary Heart Disease by Selected Characteristics, Hawaii 2005* .....	17
Figure 6. Trends in Stroke Mortality Rate by County, Hawaii 1998-2005* .....	17
Figure 7. Mortality Rate for Stroke by Selected Characteristics, Hawaii 2005* .....	17
Figure 8. CVD-Associated Mortality Rate by County, Hawaii 2005* .....	18
Figure 9. CVD-Associated Mortality Rate by Ethnicity, Hawaii 2005* .....	18
Figure 10. Trends in Adult High Blood Pressure Prevalence, BRFSS, Hawaii 1999-2005* .....	21
Figure 11. Trends in Adult High Blood Pressure Prevalence, HHS 3-Year Moving Average, Hawaii 1998-2005* .....	21
Figure 12. Prevalence of Physician-Advised Behavior Changes to Control High Blood Pressure and Self-Reported Behavior Changes, BRFSS, Hawaii 2005 .....	22
Figure 13. Adult High Blood Pressure Prevalence by Selected Characteristics, BRFSS, Hawaii 2005* .....	22
Figure 14. Adult High Blood Pressure Prevalence by Socioeconomic Status, BRFSS, Hawaii 2005* .....	22
Figure 15. Trends in High Blood Pressure Prevalence by Ethnicity, HHS 3-year Moving Average, Hawaii 1998-2005* .....	23
Figure 16. Trends in Adult High Blood Cholesterol Prevalence, BRFSS, Hawaii 1999-2005* .....	23
Figure 17. Trends in Adult High Blood Cholesterol Prevalence, HHS 3-year Moving Average, Hawaii 1998-2005* .....	23
Figure 18. Adult High Blood Cholesterol Prevalence by Selected Characteristics, BRFSS, Hawaii 2005* .....	24
Figure 19. Adult High Blood Cholesterol Prevalence by Socioeconomic Status, BRFSS, Hawaii 2005* .....	24
Figure 20. Trends in Adult High Blood Cholesterol Prevalence by Ethnicity, HHS 3-year Moving Average, Hawaii 1998-2005* .....	25
Figure 21. Trends in Adult Smoking Prevalence, BRFSS, Hawaii 1998-2005* .....	25
Figure 22. Trends in Adult Smoking Prevalence, HHS 3-year Moving Average, Hawaii 2000-2005* .....	26
Figure 23. Adult Smoking Prevalence by Selected Characteristics, BRFSS Hawaii 2005* .....	26
Figure 24. Adult Smoking Prevalence by Socioeconomic Status, BRFSS, Hawaii 2005* .....	26
Figure 25. Trends in Adult Smoking Prevalence by Ethnicity, HHS 3-year Moving Average, Hawaii 1998-2005* .....	27
Figure 26. Trends in Adults Reporting No Leisure-Time Physical Activity, BRFSS, Hawaii 2001-2005* .....	27
Figure 27. Prevalence of Adults Reporting No Leisure-time Physical Activity by Selected Characteristics, BRFSS, Hawaii 2005* .....	28
Figure 28. Prevalence of Adults Reporting No Leisure-time Physical Activity by Socioeconomic Status, BRFSS, Hawaii 2005* .....	28
Figure 29. Trends in Adult Overweight (BMI $\geq$ 25-29.9) Prevalence, BRFSS, Hawaii 1998-2005* .....	29
Figure 30. Trends in Adult Overweight Prevalence, HHS 3-year Moving Average, Hawaii 1998-2005* .....	29
Figure 31. Trends in Adult Overweight Prevalence by Ethnicity, HHS 3-year Moving Average, Hawaii 1998-2005* .....	29

Figure 32. Adult Overweight Prevalence by Selected Characteristics, BRFSS, Hawaii 2005* .....	30
Figure 33. Adult Overweight Prevalence by Socioeconomic Status, BRFSS, Hawaii 2005* .....	30
Figure 34. Trends in Adult Obesity (BMI ≥30) Prevalence, BRFSS, Hawaii 1998-2005* .....	31
Figure 35. Trends in Adult Obesity Prevalence, HHS 3-year Moving Average, Hawaii 1998-2005* .....	31
Figure 36. Trends in Adult Obesity Prevalence by Ethnicity, HHS 3-year Moving Average, Hawaii 1998-2005* .....	31
Figure 37. Adult Obesity Prevalence by Selected Characteristics, Hawaii 2005* .....	32
Figure 38. Adult Obesity Prevalence by Socioeconomic Status, Hawaii 2005* .....	32
Figure 39. Trends in Adult Diabetes Prevalence, BRFSS, Hawaii 1998-2005* .....	33
Figure 40. Trends in Adult Diabetes Prevalence, HHS 3-year Moving Average, Hawaii 1998-2005* .....	33
Figure 41. Trends in Adult Diabetes Prevalence by Ethnicity, HHS 3-year Moving Average, Hawaii 1998-2005* .....	33
Figure 42. Adult Diabetes Prevalence by Selected Characteristics, BRFSS, Hawaii 2005* .....	34
Figure 43. Adult Diabetes Prevalence by Socioeconomic Status, BRFSS, Hawaii 2005* .....	34
Figure 44. Self-Reported Conditions Causing Activity Limitation (Disability) Among Adults (18-64) by Ethnicity, BRFSS, Hawaii 2002 .....	35
Figure 45. Self-Reported Conditions Causing Activity Limitation (Disability) Among Elderly Adults (65+) by Ethnicity, BRFSS, Hawaii 2002 .....	35
Figure 46. Trends in CVD-Associated Hospital Discharges, HHIC, Hawaii 1999-2005 .....	38
Figure 47. Trends in CVD-Associated Hospital Charges, HHIC, Hawaii 1999-2005 .....	38

## LIST OF TABLES

Table 1. CVD-Associated Deaths by Age Group, Hawaii 2005 .....	15
Table 2. Average Age at Death for Major CVD by Gender and Ethnicity, Hawaii 2005 .....	15
Table 3. Prevalence of Adults who Reported a History of Myocardial Infarction (MI), Angina/Coronary Heart Disease (CHD), or Stroke, by Selected Characteristics - BRFSS, Hawaii 2005 .....	19
Table 4. Percent of Adults with CVD-Associated Risk Factors, HHS 3-year average, Hawaii 2003-2005 .....	20
Table 5. Risk Factors Among Adults Reporting History of MI, Angina/CHD, or Stroke, BRFSS, Hawaii 2005* ..	20
Table 6. CVD-Associated Hospital Discharges and Charges, HHIC, Hawaii 2005 .....	36
Table 7. CVD-Associated Hospital Discharges by Selected Characteristics, HHIC, Hawaii 2005 .....	37
Table 8. CVD-Associated Hospital Discharges and Average Length of Stay (ALOS) by Payor, HHIC, Hawaii 2005 .....	37



## EXECUTIVE SUMMARY

Cardiovascular disease (CVD) continues to be the leading cause of death in the United States and in Hawaii for the past several years. Nationally, over 800,000 deaths were attributed to CVD in 2004. In Hawaii, more than 2,900 people died from CVD in 2005. Within certain counties, and among certain ethnic groups and socioeconomic levels, the burden of CVD is disproportionately high. CVD mortality rates per 100,000 persons among Hawaii County residents were consistently higher than the other counties in the state between 1999 and 2005. Hawaii County currently experiences the highest CVD mortality rates in the state, followed by Kauai and Maui. In 2005, the mortality rate in Hawaii County due to stroke alone (51.4/100,000), was higher than the state average (43.5/100,000).

The burden of CVD in Hawaii also varies by ethnicity and socioeconomic status. When compared to the state's mortality rate for Major CVD in 2005 (205.3/100,000), Filipinos have a disproportionately higher mortality rate (396.3/100,000), as do Native Hawaiians (313.1/100,000). Filipinos also had a very high mortality rate for stroke (84.4/100,000) in 2005, which was almost double the state rate (43.5/100,000). Those in the lowest socioeconomic brackets (i.e. based on household income, education, and employment status) consistently reported the highest proportions with CVD-associated risk factors (i.e. high blood pressure, smoking, obesity, physical inactivity, and diabetes) in 2005.

CVD is also responsible for a large portion of health care costs in the state due to hospitalizations. In 2005, the total charges associated with hospitalizations due to a primary diagnosis of CVD amounted to more than \$604 million.

There are very distinct geographic and ethnic disparities in CVD mortality in Hawaii, with (1) Filipinos and Native Hawaiians experiencing high age-adjusted mortality rates, and (2) Hawaii's rural counties also experiencing high mortality rates. Similar ethnic and geographic disparities, as well as those based on socioeconomic status, are also reflected in the prevalence rates of some of the risk factors for CVD and co-morbidities (diabetes and disability) from the Behavioral Risk Factor Surveillance System and the Hawaii Health Survey.

CVD is a serious public health issue in Hawaii. The Hawaii Department of Health is committed to preventing the development of, and reducing the burden of this disease in the state, but it cannot do this alone. This report is intended to be utilized as a guide and reference for partnership development, program development and evaluation. In addition, it is intended to foster collaborative community-based initiatives to address CVD and its associated risk factors. Further, the Department encourages individuals, communities, organizations, and agencies to work on this issue together for a healthier Hawaii.



# INTRODUCTION AND PURPOSE

In the United States, CVD continues to be the leading cause of death. More deaths are attributed to CVD than motor vehicle crashes, HIV/AIDS, homicide, suicide, alcohol and drug use combined. CVD describes diseases of the heart (cardio), and diseases of the blood vessels (vascular) that impair the vital transport of blood and oxygen to the brain and body. Two of the most common and deadly forms of CVD include coronary heart disease (CHD) and stroke.

CHD occurs when the coronary arteries become narrowed or clogged by fat and cholesterol deposits (plaques) and cannot supply enough blood to the heart. As the arteries narrow, or as the plaques rupture, the flow of blood to the heart can slow or stop, causing chest pain (angina), shortness of breath, a heart attack or other symptoms. Nationally, CHD makes up the majority of heart disease deaths. In 2002, over 494,000 Americans died of coronary heart disease, 71% of all heart disease deaths that year<sup>1</sup>. Heart disease is also very costly economically with projected costs in 2006 of \$258 billion on health care services, medications, and lost productivity<sup>2</sup>.

Another common form of CVD is cerebrovascular disease or stroke. A stroke occurs when blood flow to the brain is interrupted by a blocked or burst blood vessel, and is often referred to as a brain attack. Stroke can be subdivided into three types: ischemic, hemorrhagic, and transient ischemic attack (TIA). Ischemic strokes account for 85% of all cases, and occur when an artery that supplies blood to the brain becomes blocked. Hemorrhagic strokes are more severe, and occur when an artery in the brain bursts. A TIA is sometimes called a mini-stroke. It starts just like a stroke, but clears within 24 hours often leaving no symptoms or obvious deficits. Each year in the United States, over 700,000 people suffer a stroke, of which 500,000 are first-time events. Stroke leads to over 160,000 deaths each year, making it the third leading cause of death in the nation<sup>3</sup>.

In addition to the burden of disease associated with CVD, there are also several risk factors and risk markers. Risk factors such as tobacco use and physical inactivity, as well as risk markers such as age and ethnicity, will be discussed in the *CVD Risk Factors & Risk Markers* section.

The purpose of this burden report is to: 1) promote education and awareness of the burden of stroke and stroke care issues in Hawaii, and 2) engage partners to solicit interest from public, private, professional and voluntary organizations and community leaders to participate in the statewide process of developing a Hawaii State Stroke plan and join as members in Hawaii Stroke System of Care committees.

## **BACKGROUND - CVD IN HAWAII**

CVD causes the most deaths in the State of Hawaii, with heart disease and stroke being the first and third leading causes of death respectively. CVD can further result in serious long-term disability. Overall, the population of the State of Hawaii, when compared to other states, is viewed as healthy on indicators of risk factors, CVD morbidity and mortality. **Yet, very distinct geographic, ethnic and socioeconomic health disparities persist.**

In response to physician and community concerns about the number of stroke-related deaths in the state (especially on the island of Hawaii), a Hawaii State Stroke System of Care Initiative was established. This involved a partnership between the North Hawaii Outcomes Project, the Hawaii State Department of Health Community Health Division, the Hawaii Chapter of the American Heart Association/American Stroke Association (AHA/ASA), and other community groups. The goal of this Initiative is to develop a Hawaii State Stroke Plan that will increase stroke prevention and improve stroke care in Hawaii.

In 2005, the Hawaii State Stroke System of Care Initiative convened a multidisciplinary planning group from various public and private organizations involved with stroke care in Hawaii. Per the recommendations of the ASA Task Force on the Development of Stroke Systems Report: *Recommendations for the Establishment of Stroke Systems of Care*, the planning group recommended the formation of the following four committees: Data/surveillance, Prevention/Early Detection/Screening, Pre-hospital/Acute Care and Secondary Prevention/Rehabilitation.

In October 2005, the Stroke Data Subcommittee was formed with a variety of Departmental and relevant community partners and began to assess stroke related data for Hawaii. Subsequently the group decided that a focus on all relevant CVD data would be warranted, particularly since the last CVD burden report and plan in Hawaii was produced in 1997<sup>4</sup>. Hence, all relevant data would be examined and an updated CVD state burden report for Hawaii would be developed.

Membership of the re-named CVD Data Workgroup consists of Department of Health (DOH) chronic disease epidemiologists, research statisticians, planners, and other professionals from health organizations, businesses, and health insurance companies. The goals of the group were to:

1. Assess the available data sources in Hawaii for CVD,
2. Assess the availability and form of data for analysis, and
3. Develop and disseminate relevant CVD information from each data source.

## **METHODS - DATA SOURCES**

Data on the overall burden of cardiovascular diseases in Hawaii from the following sources have been summarized (*refer to Appendices for more detail*):

- 1) Mortality data from vital records (death certificates)
- 2) Telephone survey data (BRFSS and HHS) on
  - a) Heart disease and stroke prevalence (morbidity)
  - b) Risk factors for heart diseases (tobacco use, high blood pressure, high cholesterol, overweight/obesity, physical inactivity, and poor dietary habits),
  - c) Risk markers for CVD (age and ethnicity)
  - d) Co-morbidities (diabetes, disability)
- 3) Hospital discharge data.

### **Vital Records**

The management of birth certificates, marriage licenses, and death certificates is handled by the Office of Health Status Monitoring (OHSM) within the DOH. This office collects, processes, analyzes and disseminates relevant, population-based data in order to assess the health status of Hawaii's population and to fulfill health statistics legal requirements. OHSM also provides vital statistics and demographic and health data for use in identifying state and community health trends, identifying population groups at risk for serious health problems, and evaluating program effectiveness. OHSM provides a repository for vital event records within the State such as births, deaths, and marriages and provides copies to the general public. In the last two years an electronic death certificate system has been implemented for a more streamlined and efficient process. (<http://www.hawaii.gov/health/statistics/vital-statistics/index.html>)

### **Hawaii Health Survey (HHS)**

The Office of Health Status Monitoring within DOH also is in charge of the Hawaii Health Survey (HHS), a unique annual statewide survey conducted in Hawaii since 1968. Although originally modeled after the National Health Interview Survey (NHIS) as a house-to-house survey, the HHS became a telephone survey in 1996. Based on self-reported information from adult household members, OHSM provides estimates of demographic, socioeconomic, and health conditions for the adult population, households, as well as children of Hawaii. Detailed data are collected on insurance, ethnicity, and poverty variables among others. Health conditions measured include chronic conditions and mental and physical health. The HHS provides intercensal estimates for ethnicity for Hawaii's population. Data are utilized by Department of Health programs to determine eligibility for services. In addition, information is provided to other state programs, university and college researchers and students, community health centers, and national organizations. The survey consists of core variables that are constant among years and modules or questions added on a variety of topics by programs, researchers, and outside organizations. Selected reports and standard output tables are published on the DOH Website and other information is available upon request.

(<http://www.hawaii.gov/health/statistics/hhs/index.html>)

## **Behavioral Risk Factor Surveillance System (BRFSS)**

The BRFSS is the largest continuously conducted telephone health survey in the world. The annual telephone survey of non-institutionalized adults (>18 years) has been conducted in all states and territories in the United States since 1988. The BRFSS, based on self-reports, assesses risk factors for disease(s) and conditions related to the ten leading causes of death in the U.S. population. Hawaii has been an active participant in the BRFSS since the early 1990's. The BRFSS enables the Centers for Disease Control and Prevention (CDC), state health departments, and other health and education agencies to monitor risk behaviors related to chronic diseases, injuries and death. State health departments use BRFSS data to create annual and periodic reports, fact sheets, press releases, and other publications. These materials are then used to educate the public, health professionals, and policymakers about modifiable risk factors and preventive health practices. In 2005, several questions on the prevalence of CVD and their risk factors were included on the BRFSS. Comparison of BRFSS and HHS data allow for cross-validation of findings and the discovery of health trends and disparities.

<http://www.hawaii.gov/health/statistics/brfss/index.html>

## **Hawaii Health Information Corporation (HHIC)**

HHIC is a private, not-for-profit corporation established in 1994. It maintains one of Hawaii's largest healthcare databases, which contains nearly 1,000,000 inpatient discharge records collected from Hawaii's 22 acute care hospitals for each year since 1993. These discharge records contain patient demographic information, hospital visit costs and duration, and patient diagnosis using the International Classification of Diseases (ICD), Version 9 codes. These data provide details on the burden of heart disease and stroke on Hawaii's healthcare system. The Hawaii Department of Health has a subscription to view aggregated and de-identified patient data, and has obtained permission to present the data in this report. (<http://www.hhic.org>)

## **METHODS - DATA TERMINOLOGY**

This report uses a number of terms from the fields of statistics and epidemiology to describe the burden of CVD on the state of Hawaii. The most common used terms are defined below.

### ***AGE-ADJUSTED RATES***

The risk of developing CVD and some associated risk factors generally increases with age (e.g. high blood pressure). As a result, various groups within a population that have an older age structure or distribution will have higher rates of disease. To address this issue, the mortality and prevalence rates presented in this report have been “age-adjusted.” This statistical technique allows comparison of rates between groups by applying a standard weight to the age distributions that may exist between these groups. Age-adjustment also enables comparison of the rates in this report to rates from other states and the nation that use similar methods. In this report, mortality and prevalence rates are adjusted using the direct method to the 2000 U.S. standard population. Data comparisons should be limited to data adjusted to the same standard population. Rates that are not age-adjusted are considered *crude*.

### ***HEALTH DISPARITIES***

Health disparities refer to differences in the burden and impact of disease among different populations. In this report, disparities are presented by geography, ethnicity, and socioeconomic status.

### ***HEALTHY PEOPLE 2010***

Healthy People 2010 (HP2010) is a disease prevention and health promotion initiative started by the U.S. Department of Health and Human Services. It presents a comprehensive set of objectives designed to identify the most significant preventable threats to health and to establish national goals to reduce these threats by the year 2010. By striving to achieve these objectives, the life expectancy and quality of life for all individuals will be increased, and health disparities among the population will decrease. In this report, HP2010 objectives are displayed as dotted red lines in the prevalence figures under the *CVD Risk Factors & Risk Markers* section.

### ***MORTALITY RATE***

The number of deaths within a defined population and specified time interval. In this report, mortality rates are presented in deaths per 100,000 people.

### ***MOVING AVERAGE***

Data collected over time inherently possess some form of random variation. A moving average is a technique that smoothes this variation and shows any underlying trends in the data. In this report, the Hawaii Health Survey uses a *three-year moving average* for risk factor prevalence trends. Instead of showing data from single years, the HHS presents data averaged from three-year intervals.

## ***PREVALENCE***

The number of persons with a self-reported disease or condition at a specific point in time divided by the total number of persons in the population at that same point in time. In this report, prevalence is presented as the **percent** of adults with a disease or condition (e.g. diabetes, high blood pressure) within a given year.

## ***P-VALUE (STATISTICAL SIGNIFICANCE)***

A p-value represents the probability that the observed result from a sample is due to chance alone (occurred at random). A p-value less than 0.05 is considered statistically significant. This means that the observed differences between two values have less than a 5% probability of occurring by chance, assuming that the two values should not be different at all. In this report, statements of statistical significance are followed by  $p<.05$  to denote the p-value.

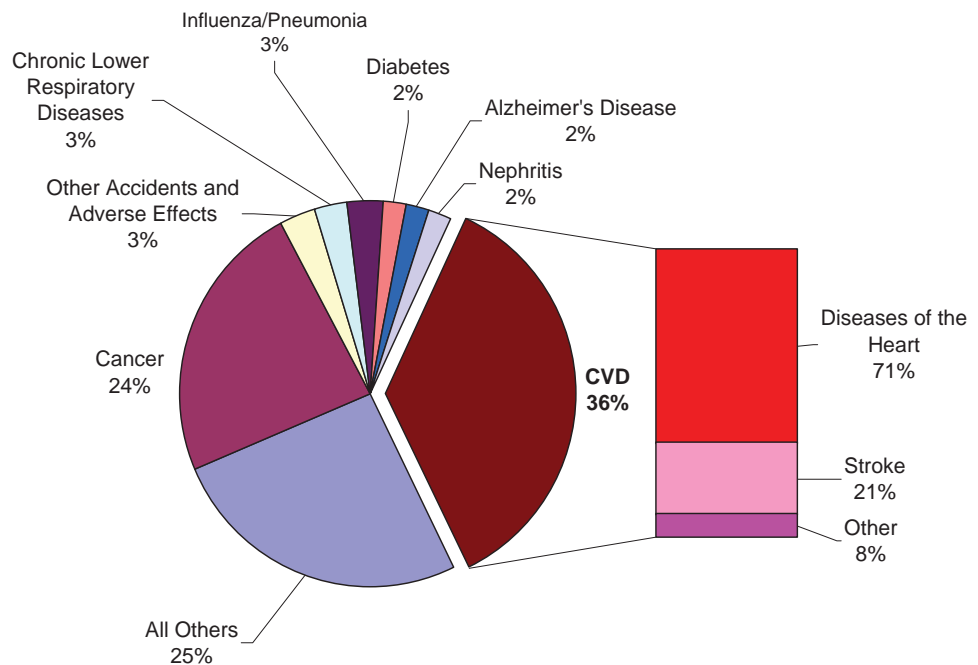
# CVD MORTALITY

CVD-related mortality information is collected from death certificates and analyzed by the Office of Health Status Monitoring. Deaths are coded using the International Classification of Diseases (ICD), Version 10. The information presented in Figure 1 represents underlying causes of death in Hawaii for 2005. OHSM also provides age-adjusted mortality rates (deaths per 100,000) for various forms of CVD, and groups the information by county and ethnicity. This information is presented in Figures 2-9, which include Major Cardiovascular Diseases (ICD-10 codes I00-I78), Coronary Heart Disease (ICD-10 codes I11, I20-I25), and Stroke (ICD-10 codes I60-I69). The term *Major Cardiovascular Diseases* refers to a group of diseases which include Coronary Heart Disease and Stroke. This grouping of diseases constitutes the majority of CVD deaths in Hawaii, and is thus detailed in this report (*refer to Appendix A for more detail*). As shown in Figure 1, the two forms of CVD which caused the most CVD-related deaths were Diseases of the Heart and Stroke.

**Figure 1. Leading Causes of Death in Hawaii, 2005**

**FINDING:**

CVD was the leading cause of death among Hawaii residents in 2005, causing over 1/3 of total deaths that year.



**SOURCE:** Hawaii Department of Health, Office of Health Status Monitoring



**FINDING:**

- ◆ Table 1 suggests that deaths due to CVD generally increase with age. That is, people are more likely to die from CVD as they get older.
- ◆ Also, deaths due to CVD increase dramatically after age 65.

Age at Death	Number of Deaths			Mortality Rate (per 100,000)		
	CHD	Stroke	TOTAL CVD	CHD	Stroke	TOTAL CVD
Less than 40	11	6	46	1.6	0.9	6.8
40 to 44	23	10	58	24.6	10.7	62.0
45 to 49	30	17	76	31.4	17.8	79.5
50 to 54	60	20	125	64.4	21.5	134.2
55 to 59	59	22	137	70.3	26.2	163.3
60 to 64	88	29	186	138.8	45.8	293.5
65 to 69	83	32	196	202.0	77.9	477.1
70 to 74	111	49	244	299.6	132.2	658.6
75 to 79	156	84	378	399.1	214.9	967.0
80 and over	615	410	1,711	1,073.0	715.3	2,985.2
<b>TOTAL</b>	<b>1,236</b>	<b>679</b>	<b>3,157</b>	<b>96.9</b>	<b>53.2</b>	<b>247.6</b>
<b>Age-Adjusted TOTAL</b>				<b>81.3</b>	<b>43.5</b>	<b>205.3</b>

**SOURCE:** Hawaii State Department of Health, Office of Health Status Monitoring

*Average age at death*

**FINDING:**

- ◆ Table 2 suggests that men die from Major CVD at a younger age than women.
- ◆ Native Hawaiians/Part-Native Hawaiians die at a younger average age from Major CVD compared to other major ethnic groups.
- ◆ **NOTE:** Major CVD includes Coronary Heart Disease, Stroke, and other common forms of CVD.

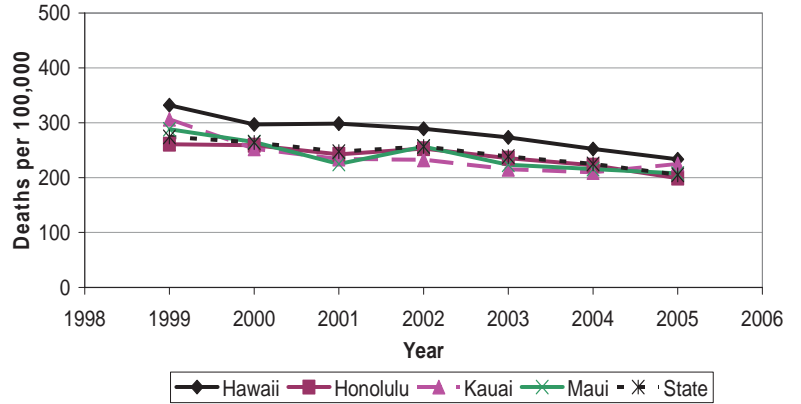
<b>MAJOR CARDIOVASCULAR DISEASES*</b>				
Ethnicity	Male		Female	
	Number	Average Age	Number	Average Age
Chinese	102	79.8	95	84.6
Filipino	319	77.1	204	78.2
Japanese	500	78.6	467	84.8
Native Hawaiian/Part-Native Hawaiian	256	<b>65.2</b>	267	<b>72.3</b>
White	406	74.8	343	82.5
All Others	102	62.9	96	75.1
<b>TOTAL</b>	<b>1,685</b>	<b>73.1</b>	<b>1,472</b>	<b>79.6</b>

**SOURCE:** Hawaii State Department of Health, Office of Health Status Monitoring  
\*Includes ICD-10 Codes I00-I78

Figure 2. Trends in Major Cardiovascular Diseases Mortality Rate by County, Hawaii 1999-2005\*

**FINDING:**

- ◆ The mortality rates due to major cardiovascular diseases have decreased between 1999 and 2005.
- ◆ Hawaii County consistently experienced higher mortality rates than other counties during those years.



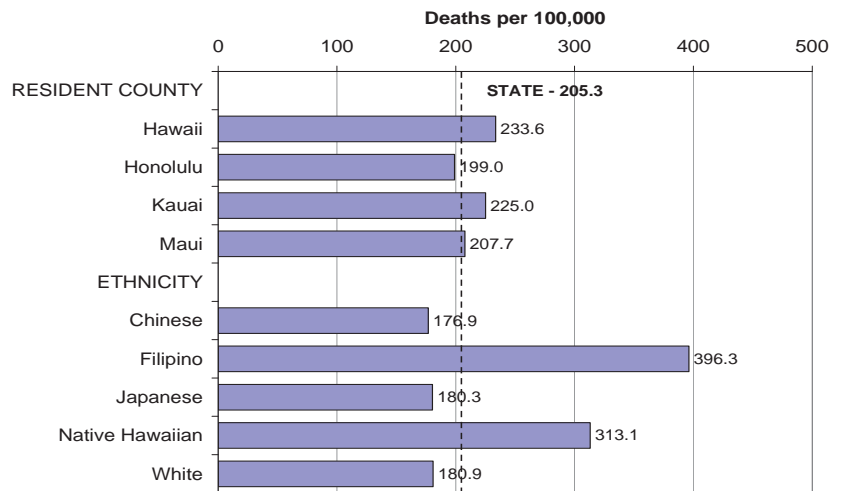
\*Adjusted by age to 2000 U.S. Standard

SOURCE: Hawaii Department of Health – Office of Health Status Monitoring

Figure 3. Mortality Rate for Major Cardiovascular Diseases by Selected Characteristics, Hawaii 2005\*

**FINDING:**

- ◆ Hawaii County had the highest mortality rate compared to the other counties.
- ◆ Filipinos and Native Hawaiians experienced a higher mortality rate due to major cardiovascular disease compared to other ethnic groups.

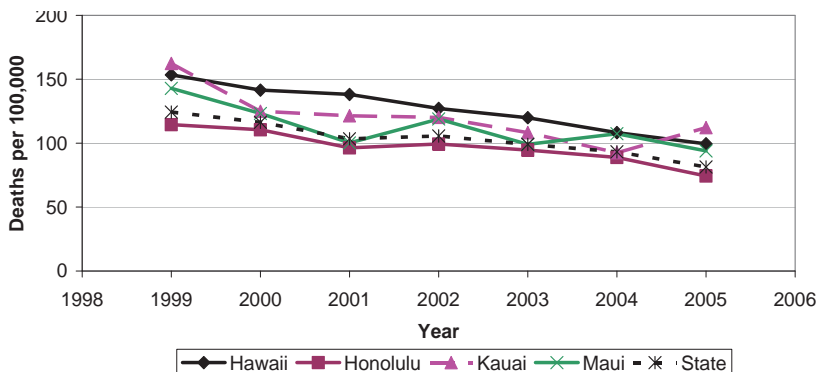


\*Adjusted by age to 2000 U.S. Standard

SOURCE: Hawaii Department of Health – Office of Health Status Monitoring

## CVD MORTALITY - CORONARY HEART DISEASE

Figure 4. Trends in Coronary Heart Disease Mortality Rate by County, Hawaii 1999-2005\*



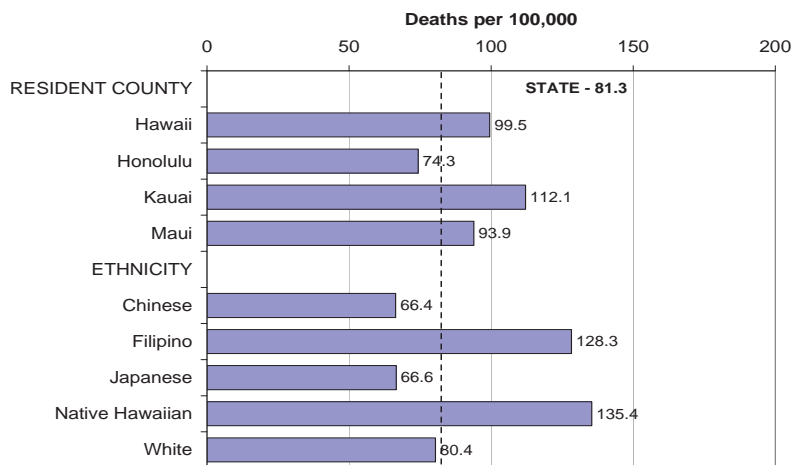
**FINDING:**

- ◆ The mortality rate for coronary heart disease has decreased overall between 1999 and 2005.
- ◆ Hawaii County had the highest mortality rate from 2000-2004.

\*Adjusted by age to 2000 U.S. Standard

SOURCE: Hawaii Department of Health, Office of Health Status Monitoring

Figure 5. Mortality Rate for Coronary Heart Disease by Selected Characteristics, Hawaii 2005\*



**FINDING:**

- ◆ Kauai County had a slightly higher mortality rate compared to the other counties.
- ◆ Native Hawaiians and Filipinos had higher mortality rates compared to the other ethnic groups.

\*Adjusted by age to 2000 U.S. Standard

SOURCE: Hawaii Department of Health, Office of Health Status Monitoring

## CVD MORTALITY - STROKE

Figure 6. Trends in Stroke Mortality Rate by County, Hawaii 1998-2005\*

**FINDING:**

- ◆ Stroke mortality rates have been decreasing since 1999.
- ◆ With the exception of 2004, Hawaii County had the highest stroke mortality rate in the state.

\*Adjusted by age to 2000 U.S. Standard

SOURCE: Hawaii Department of Health, Office of Health Status Monitoring

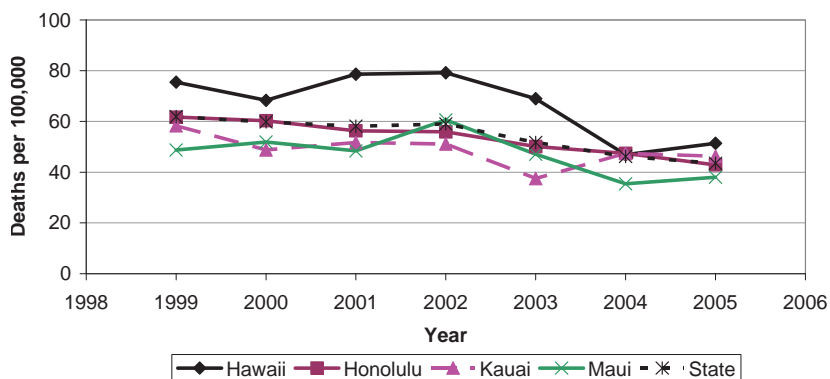


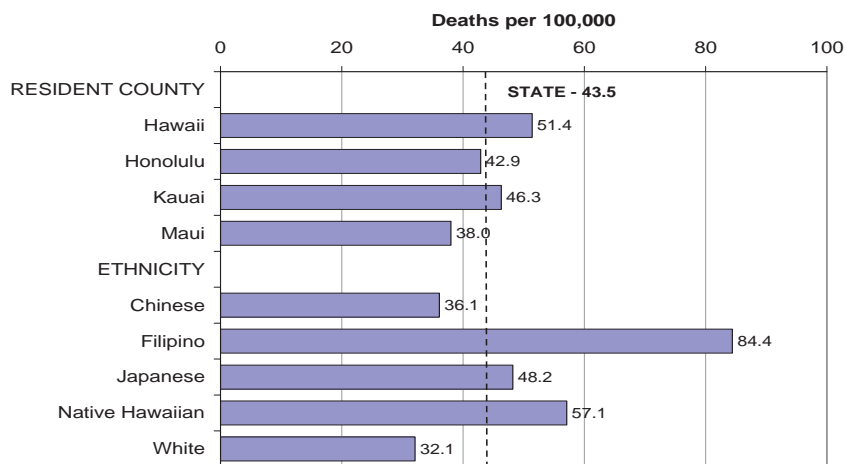
Figure 7. Mortality Rate for Stroke by Selected Characteristics, Hawaii 2005\*

**FINDING:**

- ◆ In 2005, Hawaii County had the highest stroke mortality rate in the state.
- ◆ Filipinos had the highest stroke mortality rate compared to the other major ethnic groups.

\*Adjusted by age to 2000 U.S. Standard

SOURCE: Hawaii Department of Health, Office of Health Status Monitoring



# CVD MORTALITY - SUMMARY

## FINDING:

- ◆ Hawaii County had higher mortality rates due to Major CVD and stroke in 2005 compared to other counties.
- ◆ Kauai County had the highest mortality rate due to CHD.

\*Adjusted by age to 2000 U.S. Standard

SOURCE: Hawaii Department of Health, Office of Health Status Monitoring

Figure 8. CVD-Associated Mortality Rate by County, Hawaii 2005\*

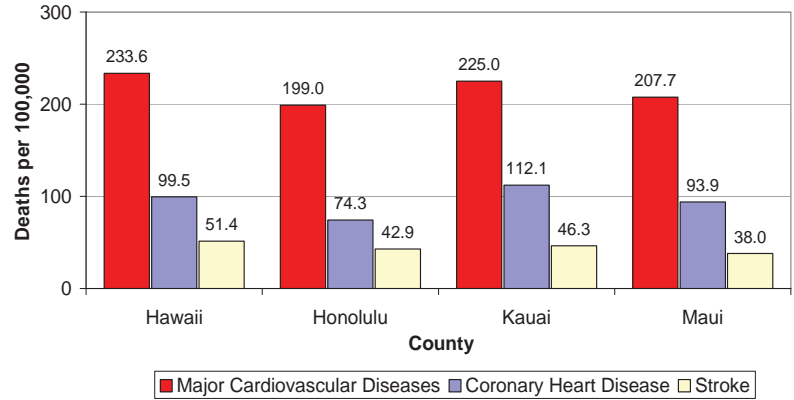


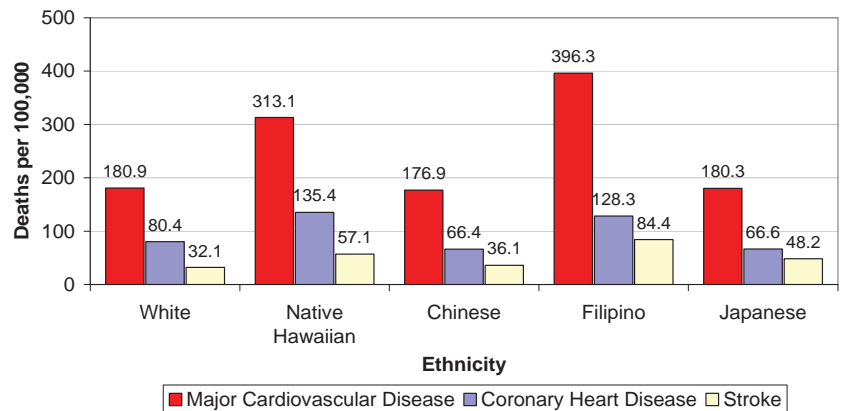
Figure 9. CVD-Associated Mortality Rate by Ethnicity, Hawaii 2005\*

## FINDING:

- ◆ Filipinos had the highest mortality rates due to major CVD and stroke compared to the other ethnic groups.
- ◆ For Filipinos, stroke comprised the majority of CVD-associated deaths.
- ◆ Native Hawaiians had the highest mortality rates due to CHD.

\*Adjusted by age to 2000 U.S. Standard

SOURCE: Hawaii Department of Health, Office of Health Status Monitoring



# CVD PREVALENCE

The prevalence of CVD in Hawaii for the purpose of this report is measured by the number of adults who report a previous experience with myocardial infarction (MI), angina or coronary heart disease, or stroke on the BRFSS. Overall, the percent of adults who reported a history of a myocardial infarction (3.6%) and angina/coronary heart disease (3.4%) in 2005 were among the lowest in the nation. Nationally, the reported prevalence of MI was at 4.0%, and angina/coronary heart disease was at 4.4% in 2005<sup>5</sup>. Hawaii had a slightly higher prevalence of stroke (2.9%) compared to the nation (2.6%)<sup>6</sup>. However, despite these numbers, there continue to be groups within the state that reported a high prevalence of CVD. Table 1 presents a state profile of adults who reported a history of CVD. It is important to note that the data reflects individuals who have survived one of these cardiovascular events. Adults who did not survive a first-time event are not captured in the data.

## FINDING:

- ◆ More men reported a history of MI, CHD and stroke compared to women.
- ◆ Native Hawaiians reported a higher proportion of CVD compared to other ethnic groups.
- ◆ Those with the least education and household income reported a higher proportion of CVD compared to those with the highest.
- ◆ Maui County had the highest reported proportion of MI and CHD. Hawaii County had the highest reported proportion of stroke.

**Table 3. Prevalence of Adults who Reported a History of Myocardial Infarction (MI), Angina/Coronary Heart Disease (CHD), or Stroke, by Selected Characteristics, BRFSS, Hawaii 2005**

Characteristic	MI (%)	Angina/CHD (%)	Stroke (%)
<b>Sex*</b>			
Male	4.6	4.1	3.2
Female	2.7	2.7	2.6
<b>Race/Ethnicity*</b>			
Filipino	2.7	2.4	2.1
Japanese	3.5	2.7	3.5
Native Hawaiian	4.4	4.6	4.9
White	4.0	4.2	2.7
Others	3.2	2.9	1.9
<b>Education*</b>			
Less than high school diploma	11.1	6.3	8.8
High school graduate	3.5	2.9	2.7
Some college	3.1	2.9	2.5
College graduate	2.9	3.9	2.3
<b>Household Income*</b>			
Less than \$15,000	5.4	7.4	11.0
\$15,000-24,999	4.6	4.2	3.3
\$25,000-49,999	4.1	3.3	2.1
\$50,000-74,999	3.4	3.2	2.0
More than \$75,000	2.4	2.8	1.7
Unknown/Refused	3.8	3.0	4.1
<b>County*</b>			
Honolulu	3.5	3.3	2.8
Hawaii	4.0	3.8	3.2
Kauai	3.1	3.0	2.8
Maui	4.3	4.1	3.1
<b>TOTAL*</b>	3.6	3.4	2.9
<b>SOURCE:</b> Hawaii BRFSS - Hawaii Department of Health			
*Percentages are weighted to population characteristics			

# CVD RISK FACTORS & RISK MARKERS

Behaviors that increase the chance of developing a disease are often referred to as risk factors. Some (physical inactivity, tobacco use, diet) can be modified by lifestyle changes, while others (high blood pressure, high cholesterol, diabetes) can be managed through regular use of medication (i.e. modification through risk reduction for death, acute events, and hospitalizations). There are also non-modifiable risk markers (genetic predisposition, age, gender, race/ethnicity) that can affect chances of developing disease. Other factors such as education, occupation, or income are also risk markers and are potentially modifiable. This report will focus on the following risk factors: High Blood Pressure, High Cholesterol, Smoking, Physical Inactivity, Overweight/Obesity, and Diabetes, along with the effects posed by risk markers. According to data from the Hawaii Health Survey, about 7 out of 10 adults in Hawaii possess at least one of these risk factors for CVD (Table 4).

**FINDING:**

- ◆ Table 4 suggests over 70% of adults in Hawaii reported having at least one risk factor for CVD.
- ◆ More than 12% of Hawaii adults reported having heart disease and more than 2 risk factors for CVD.

**Table 4. Percent of Adults with CVD-Associated Risk Factors, HHS 3-year average, Hawaii 2003-2005**

Number of Risk Factors	Percent of Hawaii Adults	Percent of Adults with Heart Disease*
0	29.9	1.9
1-2	<b>57.9</b>	3.9
>2	12.2	<b>12.1</b>

\*2004-2005 age-adjusted average only  
**SOURCE:** Hawaii Health Survey, Department of Health, Office of Health Status Monitoring

**Table 5. Risk Factors Among Adults Reporting History of MI, Angina/CHD, or Stroke, BRFSS, Hawaii 2005\***

	MI	Angina/CHD	Stroke
<b>DIABETES</b>			
% With Diabetes	<b>9.3</b>	<b>10.3</b>	<b>6.9</b>
% Without Diabetes	2.9	2.8	2.4
<b>HIGH BLOOD PRESSURE</b>			
% With HBP	<b>6.7</b>	<b>7.1</b>	<b>5.5</b>
% Without HBP	1.7	1.8	1.6
<b>HIGH CHOLESTEROL</b>			
% With High Cholesterol	<b>4.9</b>	<b>6.0</b>	3.9
% Without High Cholesterol	2.9	2.3	2.5
<b>OBESITY</b>			
% Obese	<b>5.4</b>	<b>5.5</b>	4.3
% Overweight	3.7	3.1	1.9
% Not Obese/Overweight	2.5	2.4	2.7
<b>PHYSICAL INACTIVITY</b>			
% Physically Inactive	<b>5.1</b>	3.6	<b>4.9</b>
% Not Physically Inactive	3.0	3.2	2.3
<b>SMOKING</b>			
% Current Smoker	<b>5.9</b>	4.5	4.1
% Former Smoker	4.2	3.4	3.1
% Non-Smoker	2.3	2.7	2.3

\*Adjusted by age to 2000 U.S. Standard  
**SOURCE:** Hawaii BRFSS – Hawaii Department of Health

**FINDING:**

- ◆ The shaded cells in Table 5 highlight significant (p<.05) differences.
- ◆ Table 5 suggests that each risk factor is significantly associated with MI, CHD, or stroke.
- ◆ Each risk factor is significantly associated with a reported history of MI.
- ◆ Diabetes and HBP are significantly associated with all three diseases.

**HIGH BLOOD PRESSURE**

High blood pressure (HBP) or hypertension is a major risk factor for both heart disease and stroke. As shown in Table 5, it is a significant risk factor for MI, CHD, and stroke among Hawaii adults. Nationally, people with high blood pressure are at least four times more likely to develop stroke<sup>7</sup>, 2-4 times more likely to develop CHD, and almost six times more likely to develop congestive heart failure than people with normal blood pressure<sup>8</sup>. Figures 10-16 show the burden of HBP on adults in Hawaii.

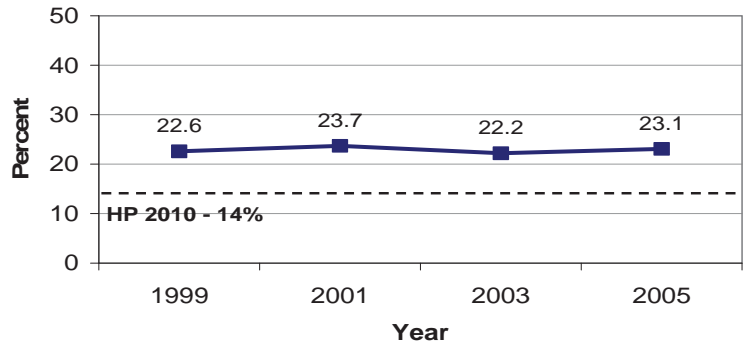
**FINDING:**

- ◆ The percent of adults in Hawaii who reported high blood pressure has increased slightly between 1999 and 2005.
- ◆ Hawaii is still above the Healthy People 2010 (HP 2010) goal of 14% adult prevalence.

\*Adjusted by age to 2000 U.S. Standard

SOURCE: Hawaii BRFSS - Hawaii Department of Health

**Figure 10. Trends in Adult High Blood Pressure Prevalence, BRFSS, Hawaii 1999-2005\***



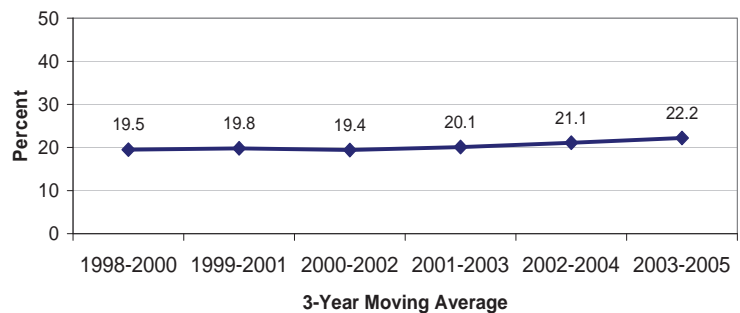
**FINDING:**

- ◆ The Hawaii Health Survey also shows that the percent of adults who report high blood pressure in Hawaii increased slightly between 1998 and 2005.
- ◆ This is consistent with the BRFSS findings.

\*Adjusted by age to 2000 U.S. Standard

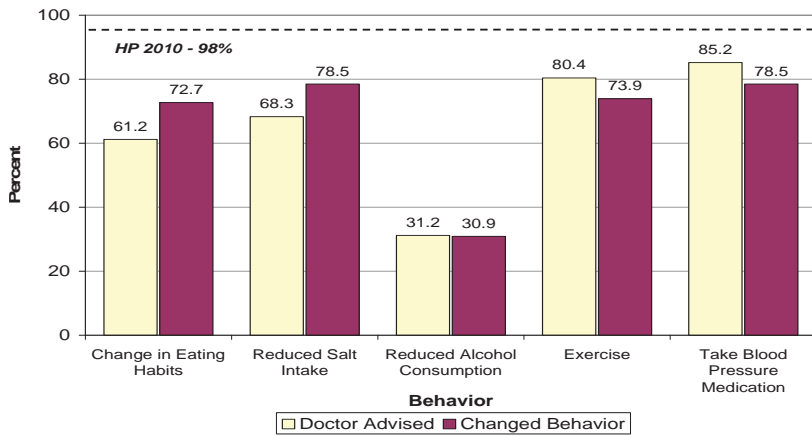
SOURCE: Hawaii Health Survey - Hawaii Department of Health, Office of Health Status Monitoring

**Figure 11. Trends in Adult High Blood Pressure Prevalence, HHS 3-Year Moving Average, Hawaii 1998-2005\***





**Figure 12. Prevalence of Physician-Advised Behavior Changes to Control High Blood Pressure and Self-Reported Behavior Changes, BRFSS, Hawaii 2005**



**FINDING:**

- ◆ More than 70% reported changing eating habits, reducing salt, exercising, and taking medication after a doctor advised them to.
- ◆ Less than 1/3 of adults with self-reported HBP reported that their doctor advised them to reduce their alcohol intake, and less than 1/3 changed their behavior.

SOURCE: Hawaii BRFSS - Hawaii Department of Health

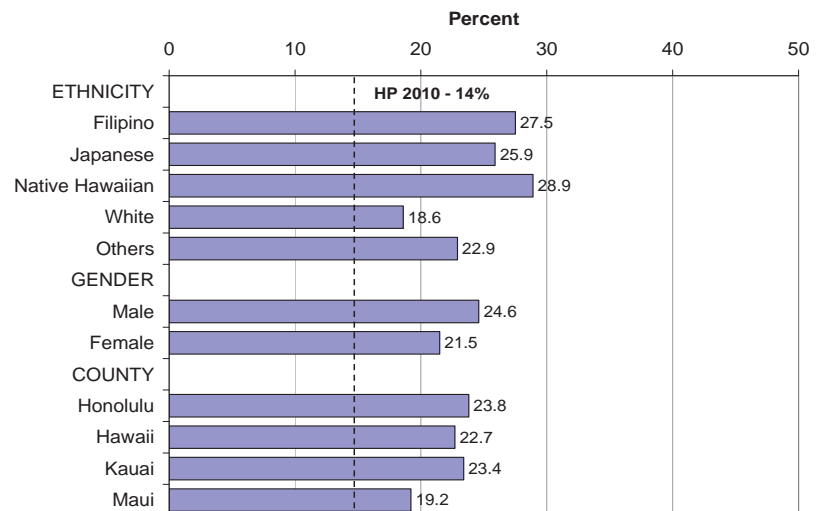
**Figure 13. Adult High Blood Pressure Prevalence by Selected Characteristics, BRFSS, Hawaii 2005\***

**FINDING:**

- ◆ Native Hawaiians, Filipinos, and Japanese had significantly ( $p < .05$ ) higher proportions of self-reported high blood pressure compared to Whites.
- ◆ There were no other significant differences seen between genders or counties.

\*Adjusted by age to 2000 U.S. Standard

SOURCE: Hawaii BRFSS - Hawaii Department of Health



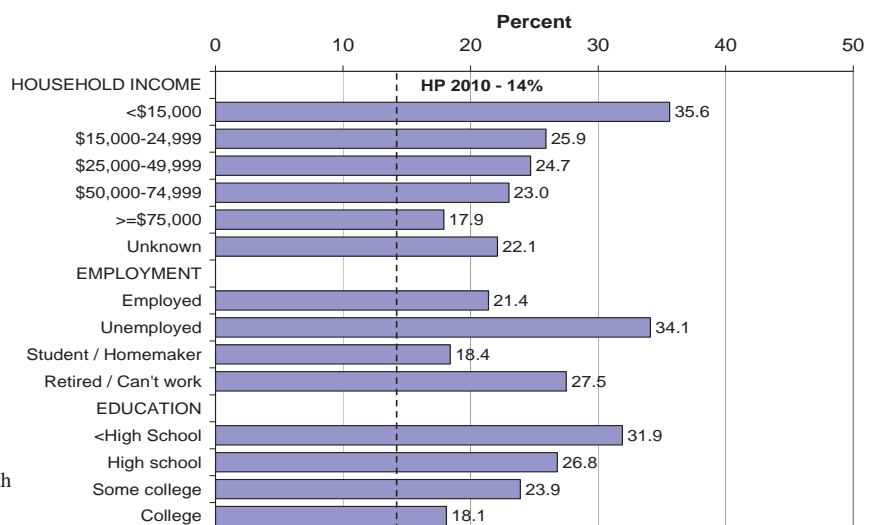
**Figure 14. Adult High Blood Pressure Prevalence by Socioeconomic Status, BRFSS, Hawaii 2005\***

**FINDING:**

- ◆ Adults in the lowest socioeconomic levels (household income, employment, education) reported significantly ( $p < .05$ ) higher proportions of high blood pressure than those at the highest levels.

\*Adjusted by age to 2000 U.S. Standard

SOURCE: Hawaii BRFSS - Hawaii Department of Health



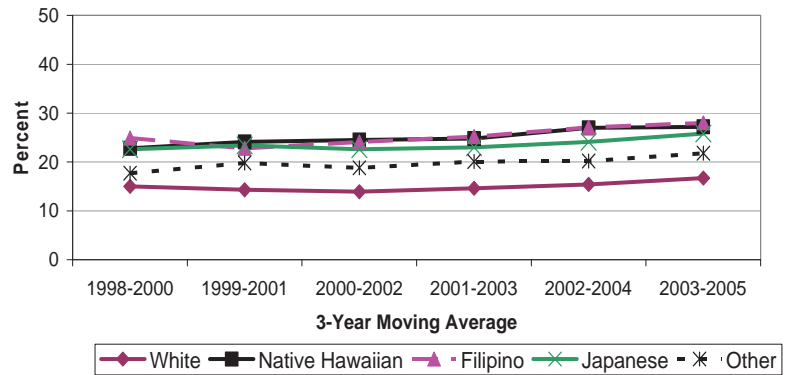
**Figure 15. Trends in High Blood Pressure Prevalence by Ethnicity, HHS 3-year Moving Average, Hawaii 1998-2005\***

**FINDING:**

- ◆ Reported HBP proportions for all ethnic groups increased slightly between 1998 and 2005.
- ◆ Whites reported the lowest proportions of high blood pressure during that time period.

\*Adjusted by age to 2000 U.S. Standard

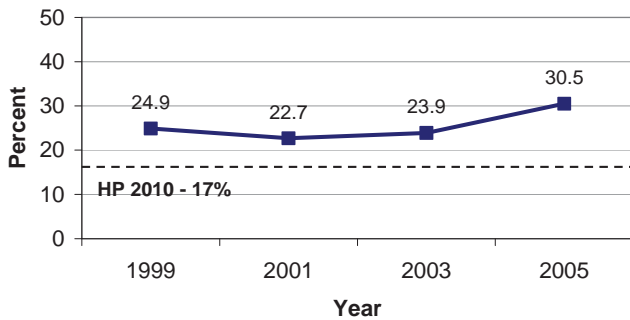
SOURCE: Hawaii Health Survey - Hawaii Department of Health, Office of Health Status Monitoring



**HIGH CHOLESTEROL**

Each year, an estimated 106.9 million American adults have high cholesterol, which is a total blood cholesterol level of 200 mg/dL and higher. Of these, 37.7 million have levels of 240 mg/dL or higher, which is considered high risk for CVD<sup>9</sup>. Cholesterol levels are influenced by a diet high in saturated fat, cigarette smoking, obesity, and physical inactivity. Studies suggest that populations whose diet is lower in fat also have lower cholesterol levels, and it is possible to reduce or reverse risk of coronary heart disease (CHD) by lowering saturated fat intake, thereby lowering cholesterol levels<sup>10</sup>.

**Figure 16. Trends in Adult High Blood Cholesterol Prevalence, BRFSS, Hawaii 1999-2005\***



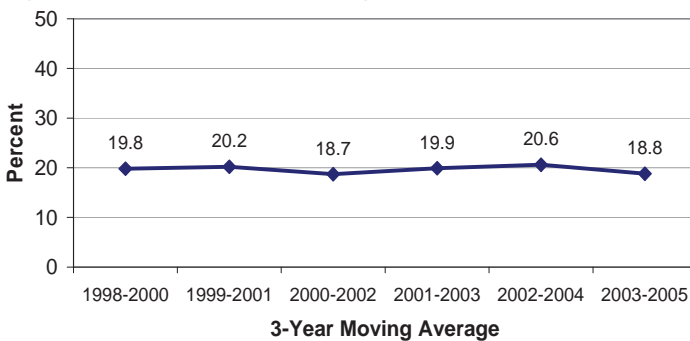
**FINDING:**

- ◆ Since 1999, the state proportion of reported high cholesterol has been higher than the HP 2010 goal of 17%.
- ◆ The proportion of reported high cholesterol among adults in 2005 was the highest seen in 6 years.

\*Adjusted by age to 2000 U.S. Standard

SOURCE: Hawaii BRFSS - Hawaii Department of Health

**Figure 17. Trends in Adult High Blood Cholesterol Prevalence, HHS 3-year Moving Average, Hawaii 1998-2005\***



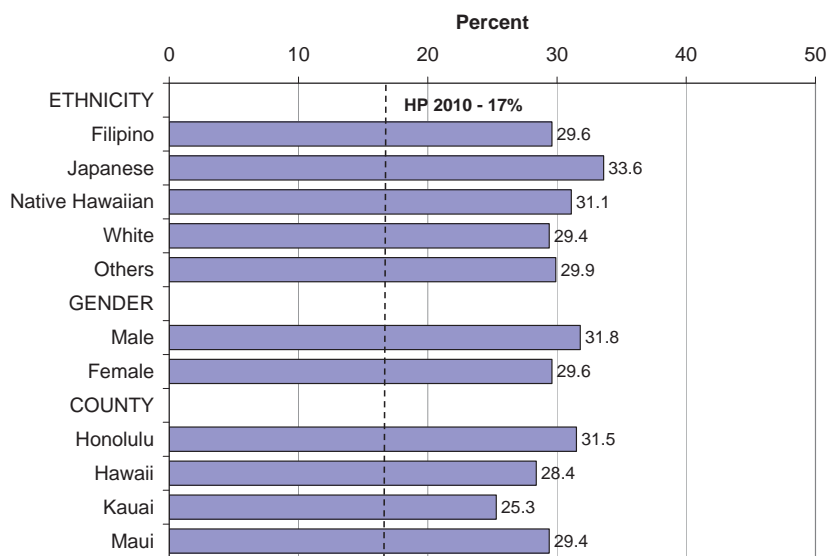
**FINDING:**

- ◆ The age-adjusted proportion of reported high cholesterol on the HHS has remained fairly steady since 1998, with a slight decrease in 2003-2005.

\*Adjusted by age to 2000 U.S. Standard

SOURCE: Hawaii Health Survey - Hawaii Department of Health, Office of Health Status Monitoring

**Figure 18. Adult High Blood Cholesterol Prevalence by Selected Characteristics, BRFSS, Hawaii 2005\***



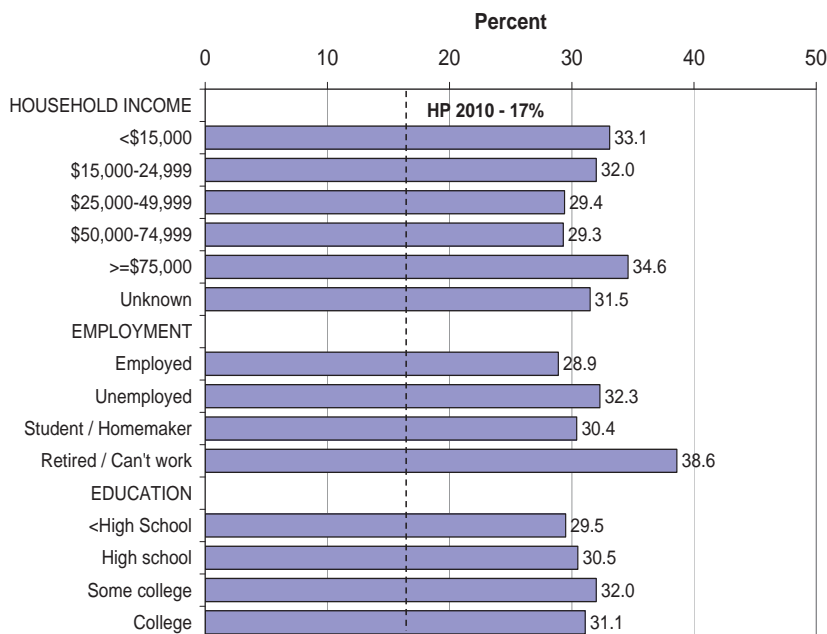
**FINDING:**

- ◆ Overall, the state has a higher proportion of reported high cholesterol compared to the HP 2010 goal of 17%.
- ◆ No significant ( $p < .05$ ) differences were found between ethnicities, genders, or counties.

\*Adjusted by age to 2000 U.S. Standard

**SOURCE:** Hawaii BRFSS - Hawaii Department of Health

**Figure 19. Adult High Blood Cholesterol Prevalence by Socioeconomic Status, BRFSS, Hawaii 2005\***



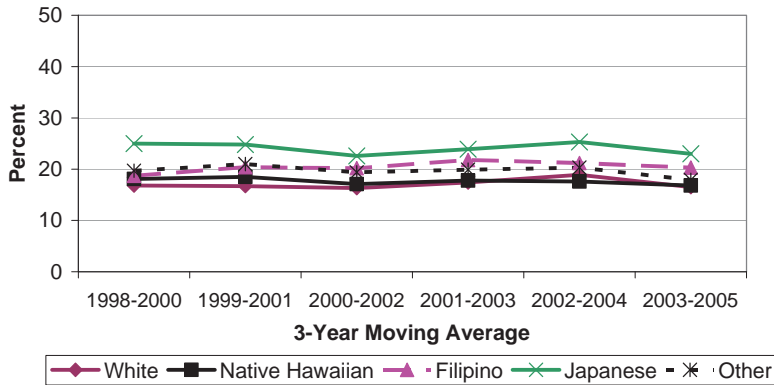
**FINDING:**

- ◆ There were no significant ( $p < .05$ ) differences in reported high cholesterol proportions within any of the socioeconomic status measures.

\*Adjusted by age to 2000 U.S. Standard

**SOURCE:** Hawaii BRFSS - Hawaii Department of Health

**Figure 20. Trends in Adult High Blood Cholesterol Prevalence by Ethnicity, HHS 3-year Moving Average, Hawaii 1998-2005\***



**FINDING:**

- ◆ Between 1998 and 2005, Japanese reported consistently higher proportions of high cholesterol compared to the other ethnic groups.

\*Adjusted by age to 2000 U.S. Standard

SOURCE: Hawaii Health Survey - Hawaii Department of Health, Office of Health Status Monitoring

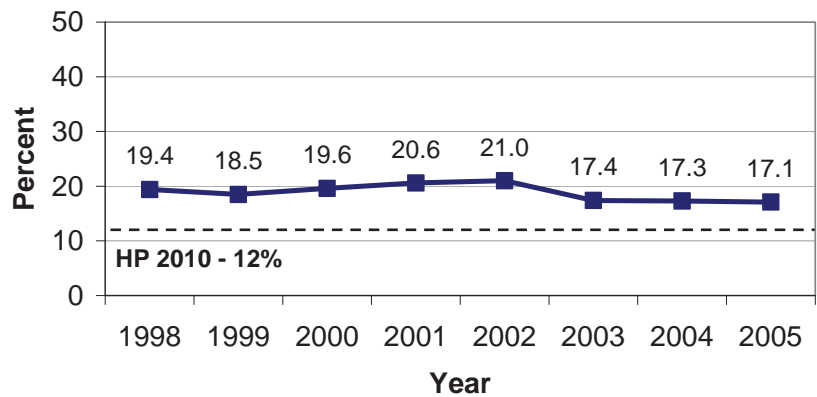
**SMOKING**

Smoking has been linked to a number of severe heart conditions including coronary heart disease, congestive heart failure, and atherosclerosis. A smoker’s risk of developing coronary heart disease is 2-4 times higher that of a non-smoker<sup>11</sup>, and cigarette smoking nearly doubles a person’s risk for stroke<sup>12</sup>. Each year, cigarette smoking accounts for nearly 440,000 deaths in the United States, resulting in more deaths than HIV/AIDS, drug use, alcohol use, motor vehicle injuries, suicides, and murders combined<sup>13</sup>. Tobacco use is the leading preventable cause of death in the United States and is also one of the most costly. Approximately \$75 billion is spent on direct medical expenses each year, resulting in almost \$82 billion in lost productivity<sup>14</sup>.

**Figure 21. Trends in Adult Smoking Prevalence, BRFSS, Hawaii 1998-2005\***

**FINDING:**

- ◆ Reported adult smoking in Hawaii has decreased since 1998, but still remains above the HP 2010 goal of 12%.



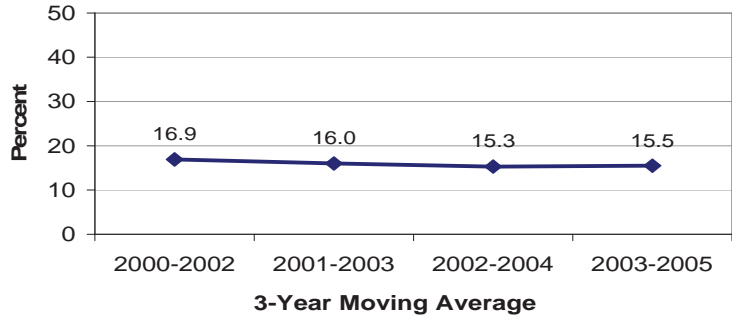
\*Adjusted by age to 2000 U.S. Standard

SOURCE: Hawaii BRFSS - Hawaii Department of Health

**Figure 22. Trends in Adult Smoking Prevalence, HHS 3-year Moving Average, Hawaii 2000-2005\***

**FINDING:**

- ◆ The 3-year moving average also shows a decrease in reported smoking proportions between 2000 and 2005 as also seen in the BRFSS.



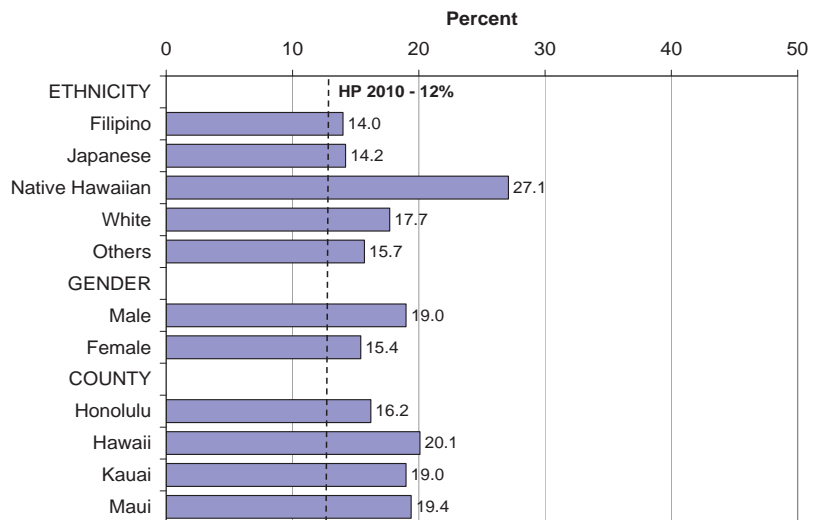
\*Adjusted by age to 2000 U.S. Standard

SOURCE: Hawaii Health Survey - Hawaii Department of Health, Office of Health Status Monitoring

**Figure 23. Adult Smoking Prevalence by Selected Characteristics, BRFSS Hawaii 2005\***

**FINDING:**

- ◆ Native Hawaiians reported significantly ( $p < .05$ ) higher smoking proportions compared to all other ethnic groups.
- ◆ Otherwise, no significant differences were seen between genders or counties.



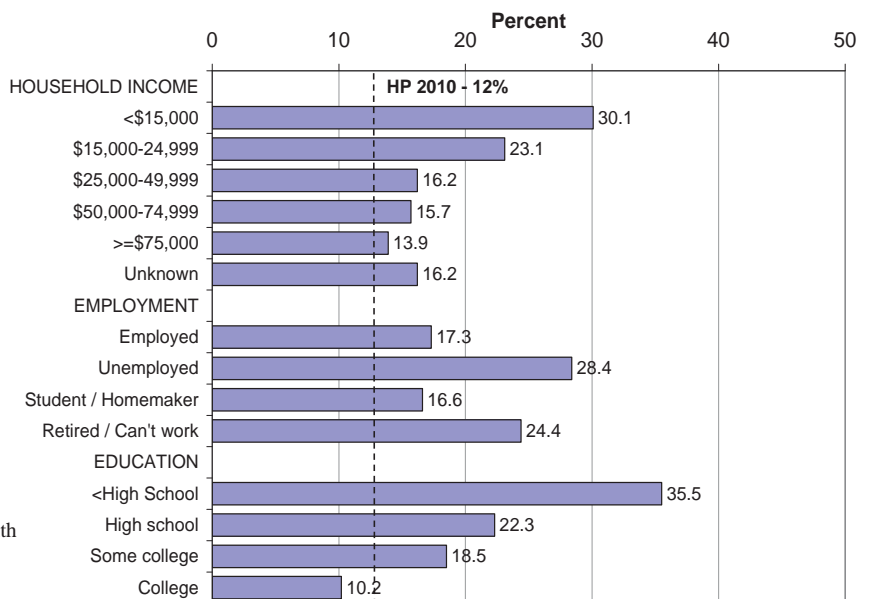
\*Adjusted by age to 2000 U.S. Standard

SOURCE: Hawaii BRFSS - Hawaii Department of Health

**Figure 24. Adult Smoking Prevalence by Socioeconomic Status, BRFSS, Hawaii 2005\***

**FINDING:**

- ◆ On the BRFSS, adults with the lowest reported household income and the least amount of education reported significantly ( $p < .05$ ) higher proportions of smoking compared to those with the most income and education.



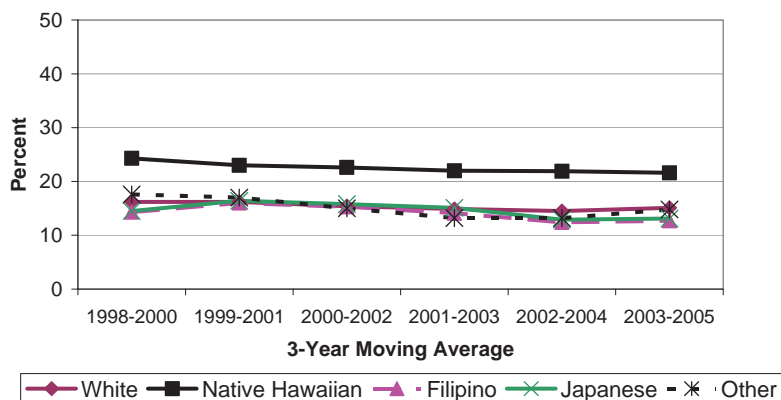
\*Adjusted by age to 2000 U.S. Standard

SOURCE: Hawaii BRFSS - Hawaii Department of Health

Figure 25. Trends in Adult Smoking Prevalence by Ethnicity, HHS 3-year Moving Average, Hawaii 1998-2005\*

**FINDING:**

- ◆ Between 1998 and 2005, Native Hawaiians consistently reported the highest proportions of adult smoking compared to the other ethnic groups.



\*Adjusted by age to 2000 U.S. Standard

SOURCE: Hawaii Health Survey - Hawaii Department of Health, Office of Health Status Monitoring

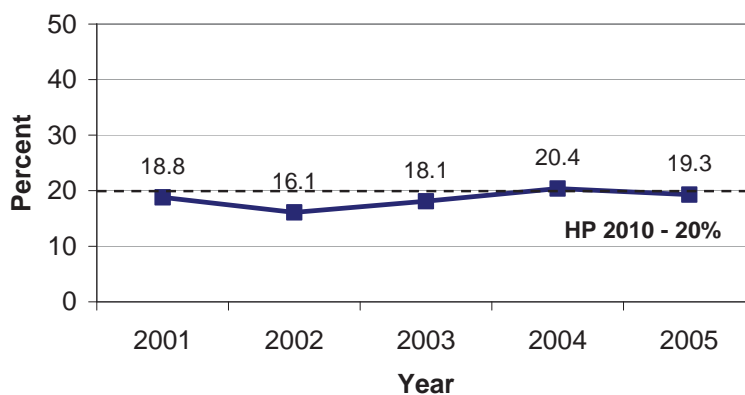
**PHYSICAL INACTIVITY**

The lack of regular, moderate or vigorous physical activity can increase one’s risk for CVD. Physical inactivity is a significant risk factor as both a direct contributor to CVD, and in conjunction with other CVD risk factors such as obesity, HBP, diabetes, and HBC<sup>15</sup>. Regular physical activity can successfully reduce one’s risk of CVD, as well as other CVD risk factors such as obesity, high blood pressure, high cholesterol, and diabetes. In the BRFSS, people are asked if they engaged in “leisure-time” physical activity in the past month. This includes physical activities or exercise outside of their regular job. Figures 26-28 present the state profile of physical activity from the BRFSS.

Figure 26. Trends in Adults Reporting No Leisure-Time Physical Activity, BRFSS, Hawaii 2001-2005\*

**FINDING:**

- ◆ Reported physical inactivity of adults has slightly increased since 2001.



\*Adjusted by age to 2000 U.S. Standard

SOURCE: Hawaii BRFSS - Hawaii Department of Health

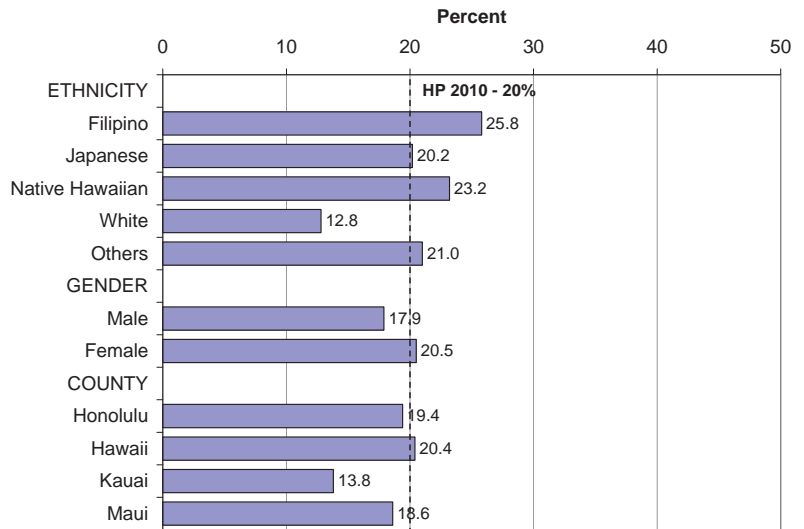
**Figure 27. Prevalence of Adults Reporting No Leisure-time Physical Activity by Selected Characteristics, BRFSS, Hawaii 2005\***

**FINDING:**

- ◆ Native Hawaiians, Filipinos and Japanese reported significantly ( $p < .05$ ) higher proportions of physically inactive adults compared to Whites.
- ◆ Otherwise, no differences were seen between genders or counties.

\*Adjusted by age to 2000 U.S. Standard

SOURCE: Hawaii BRFSS - Hawaii Department of Health



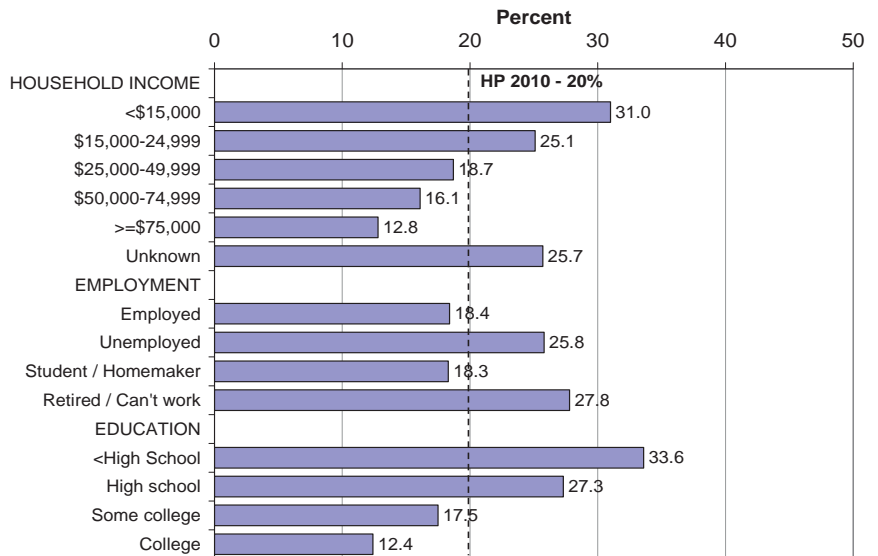
**Figure 28. Prevalence of Adults Reporting No Leisure-time Physical Activity by Socioeconomic Status, BRFSS, Hawaii 2005\***

**FINDING:**

- ◆ Reported proportions of adult physical inactivity decreases as household income and education increases.
- ◆ Adults with the lowest income and education reported significantly ( $p < .05$ ) higher physical inactivity proportions than those with the highest income and education.

\*Adjusted by age to 2000 U.S. Standard

SOURCE: Hawaii BRFSS - Hawaii Department of Health



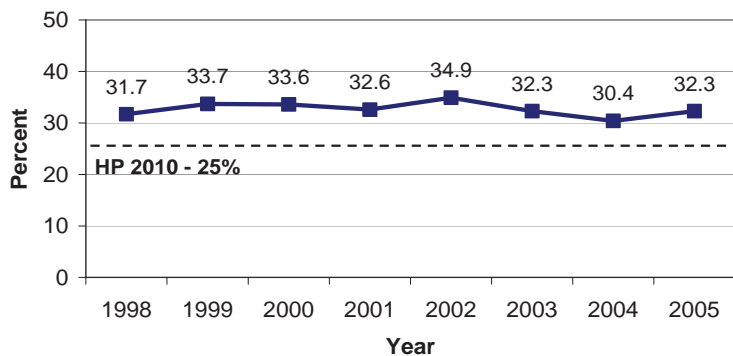
**OVERWEIGHT/OBESITY**

Overweight adults are defined by the CDC as having a Body Mass Index (BMI) between 25 and 29.9. Obese adults have a BMI above or equal to 30<sup>16</sup>. Overweight and obesity continue to be of growing concern to public health professionals in Hawaii and in the nation. There is a strong association between being overweight and obese, and having an increased risk for CVD, and some associated risk factors. The prevalence of high blood pressure and high blood cholesterol are three times higher in overweight persons than in those with normal body weight<sup>17</sup>. Research has shown



that adults who are overweight or obese can have as much as a 72% increased risk for non-fatal or fatal coronary heart disease<sup>18</sup>. Other studies have shown a strong association between high BMI and other forms of CVD such as atherosclerosis and congestive heart failure. Reducing the prevalence of adults who are overweight and obese could have significant impact on the reduction of both disease and death for CVD.

**Figure 29. Trends in Adult Overweight (BMI≥25-29.9) Prevalence, BRFSS, Hawaii 1998-2005\***



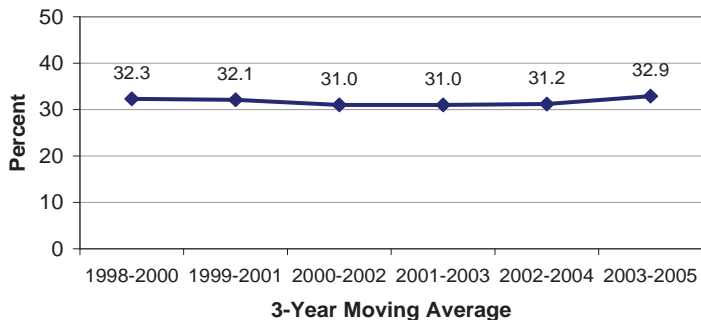
**FINDING:**

- ◆ The percent of adults who reported being overweight has remained above the HP 2010 goal of 25% since 1998.

\*Adjusted by age to 2000 U.S. Standard

SOURCE: Hawaii BRFSS - Hawaii Department of Health

**Figure 30. Trends in Adult Overweight Prevalence, HHS 3-year Moving Average, Hawaii 1998-2005\***



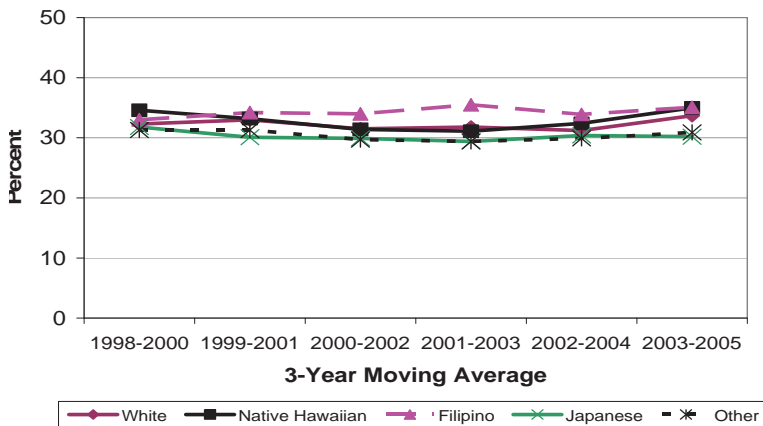
**FINDING:**

- ◆ The trend in reported proportions of overweight adults has remained steady since 1998.
- ◆ This mirrors the findings from the BRFSS.

\*Adjusted by age to 2000 U.S. Standard

SOURCE: Hawaii Health Survey - Hawaii Department of Health, Office of Health Status Monitoring

**Figure 31. Trends in Adult Overweight Prevalence by Ethnicity, HHS 3-year Moving Average, Hawaii 1998-2005\***



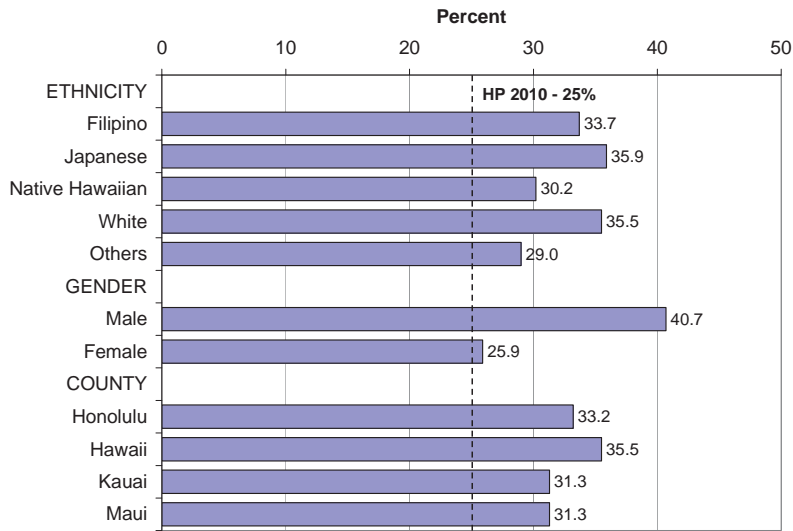
**FINDING:**

- ◆ The reported proportions of overweight adults have remained fairly consistent across the major ethnic groups since 1998.

\*Adjusted by age to 2000 U.S. Standard

SOURCE: Hawaii Health Survey - Hawaii Department of Health, Office of Health Status Monitoring

**Figure 32. Adult Overweight Prevalence by Selected Characteristics, BRFSS, Hawaii 2005\***



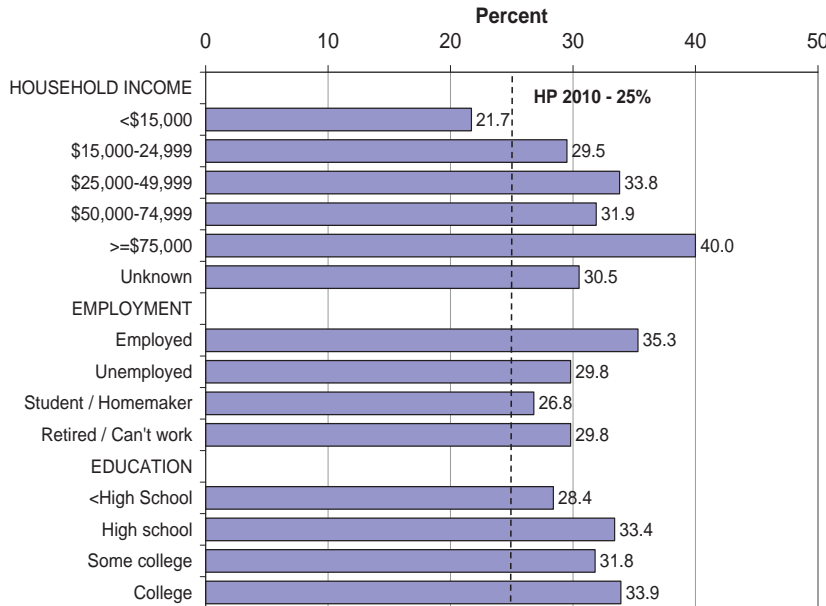
**FINDING:**

- ◆ Significantly ( $p < .05$ ) more adult men reported being overweight than women.

\*Adjusted by age to 2000 U.S. Standard

**SOURCE:** Hawaii BRFSS - Hawaii Department of Health

**Figure 33. Adult Overweight Prevalence by Socioeconomic Status, BRFSS, Hawaii 2005\***



**FINDING:**

- ◆ Adults with the highest household income were significantly ( $p < .05$ ) more likely to report being overweight than adults with the lowest income.
- ◆ The opposite trend is seen with obesity (see Fig 38).

\*Adjusted by age to 2000 U.S. Standard

**SOURCE:** Hawaii BRFSS - Hawaii Department of Health

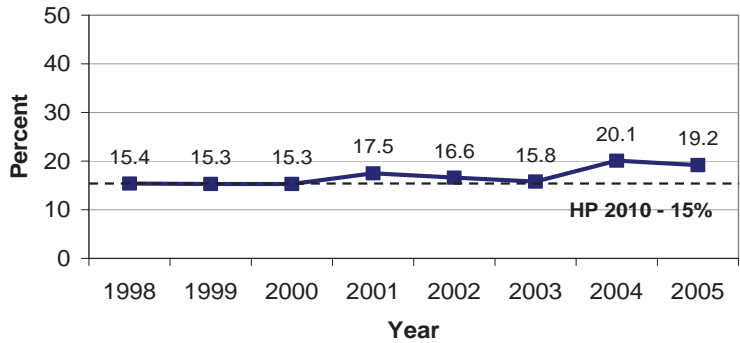
**Figure 34. Trends in Adult Obesity (BMI ≥30) Prevalence, BRFSS, Hawaii 1998-2005\***

**FINDING:**

- ◆ Between 1998 and 2005, the percent of adults in the state who reported being obese has increased and remains higher than the HP 2010 goal of 15%.

\*Adjusted by age to 2000 U.S. Standard

SOURCE: Hawaii BRFSS - Hawaii Department of Health



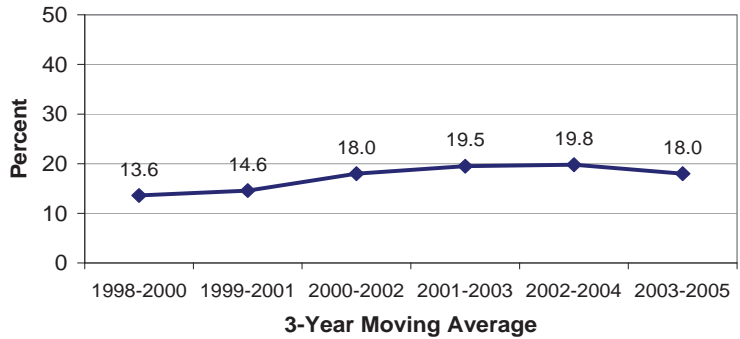
**Figure 35. Trends in Adult Obesity Prevalence, HHS 3-year Moving Average, Hawaii 1998-2005\***

**FINDING:**

- ◆ The HHS confirms the BRFSS findings that reported adult obesity prevalence has steadily increased since 1998.

\*Adjusted by age to 2000 U.S. Standard

SOURCE: Hawaii Health Survey - Hawaii Department of Health, Office of Health Status Monitoring



**Figure 36. Trends in Adult Obesity Prevalence by Ethnicity, HHS 3-year Moving Average, Hawaii 1998-2005\***

**FINDING:**

- ◆ The reported proportion of obese adults has increased for all ethnic groups between 1998 and 2005.
- ◆ Native Hawaiians consistently reported the highest proportions of obesity among all ethnic groups between 1998 and 2005.

\*Adjusted by age to 2000 U.S. Standard

SOURCE: Hawaii Health Survey - Hawaii Department of Health, Office of Health Status Monitoring

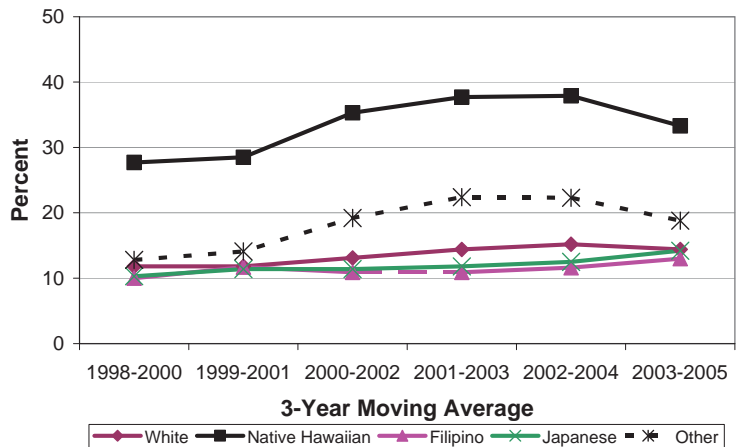


Figure 37. Adult Obesity Prevalence by Selected Characteristics, Hawaii 2005\*

**FINDING:**

- ◆ Native Hawaiian adults were significantly ( $p < .05$ ) more likely to report being obese compared to all the other ethnic groups in 2005.
- ◆ Men were also significantly ( $p < .05$ ) more likely to report being obese than women.

\*Adjusted by age to 2000 U.S. Standard

SOURCE: Hawaii BRFSS - Hawaii Department of Health

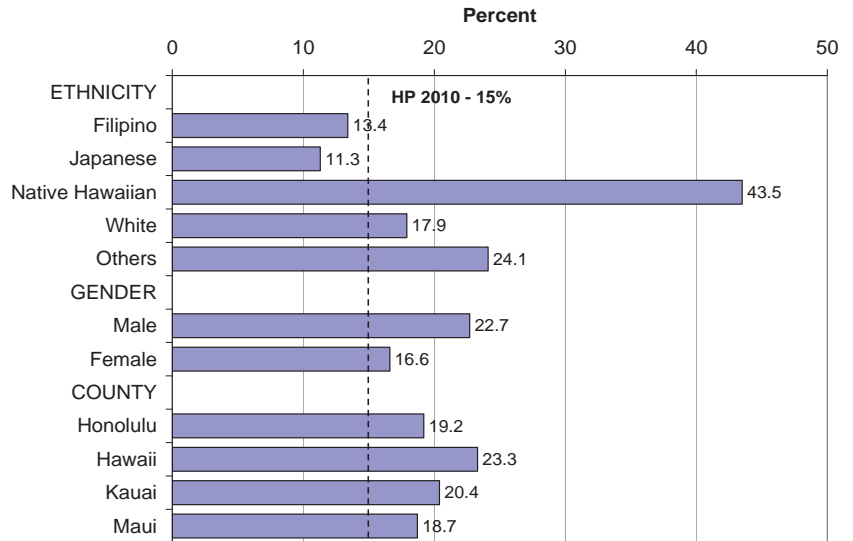


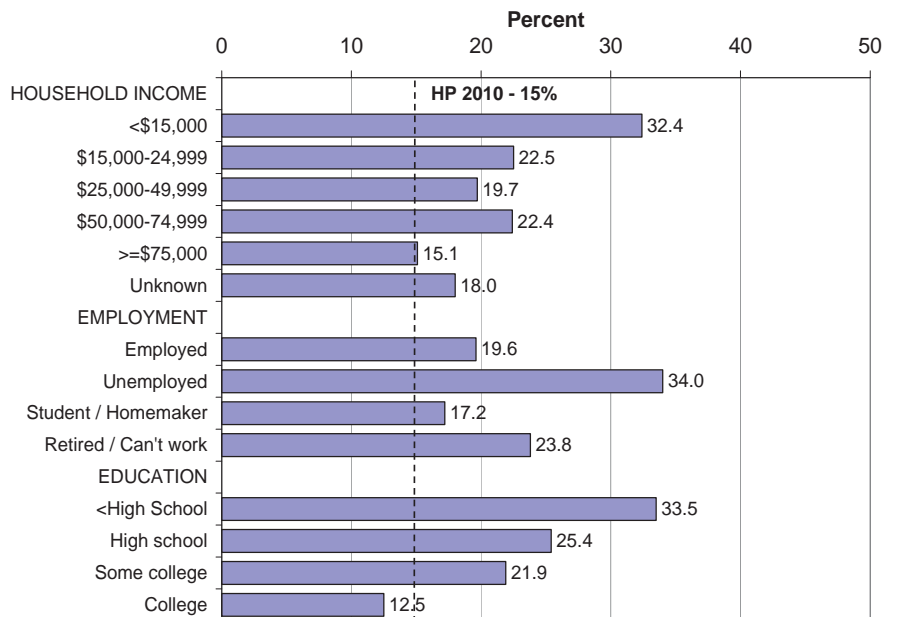
Figure 38. Adult Obesity Prevalence by Socioeconomic Status, Hawaii 2005\*

**FINDING:**

- ◆ Adults with the lowest income and education reported a significantly ( $p < .05$ ) higher proportion of reported obesity than adults in the highest income and education levels.

\*Adjusted by age to 2000 U.S. Standard

SOURCE: Hawaii BRFSS - Hawaii Department of Health

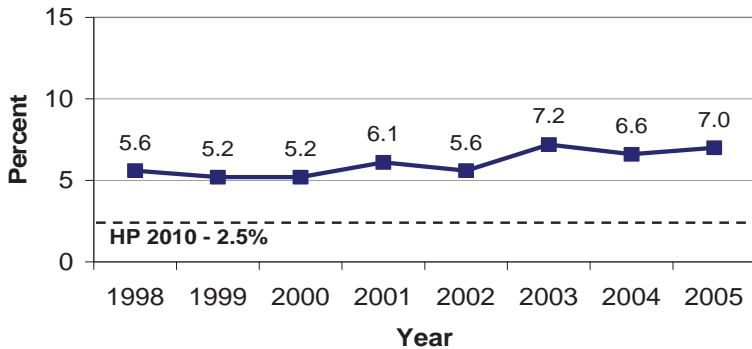


**DIABETES**

When coupled with HBP and HBC, diabetes is a strong risk factor for CVD. Almost 65% of people with diabetes die from CVD. This rate is 2-3 times higher than those without diabetes. People with diabetes have 2-4 times the risk of coronary heart disease or stroke compared to people without diabetes<sup>19</sup>. In Hawaii, of the deaths where diabetes was an underlying or contributory cause of

death, 72.7% had heart disease, 21.2% had cerebrovascular diseases, and 13.8% had hypertension<sup>20</sup>. Diabetes is also responsible for many CVD-related hospitalizations. In Hawaii, more than one-third of all stroke and coronary heart disease hospitalizations in 2005 was diabetes-related<sup>21</sup>. This disease can be prevented by eating healthy, and engaging in regular physical activity.

**Figure 39. Trends in Adult Diabetes Prevalence, BRFSS, Hawaii 1998-2005\***



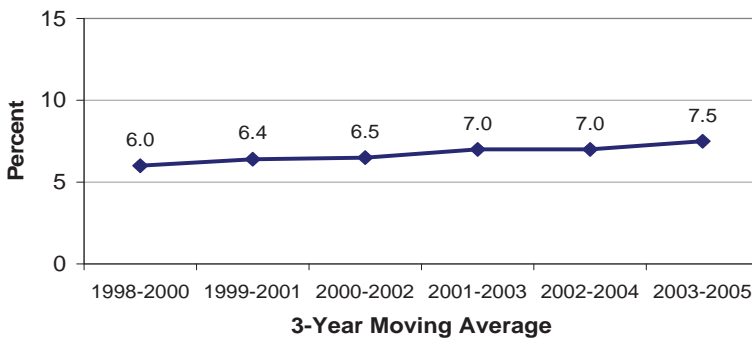
**FINDING:**

- ◆ The proportions of adults reporting a diabetes diagnosis has increased since 1998.
- ◆ Statewide reported prevalence of diabetes in 2005 is the 2<sup>nd</sup> highest seen in the last eight years.

\*Adjusted by age to 2000 U.S. Standard

SOURCE: Hawaii BRFSS - Hawaii Department of Health

**Figure 40. Trends in Adult Diabetes Prevalence, HHS 3-year Moving Average, Hawaii 1998-2005\***



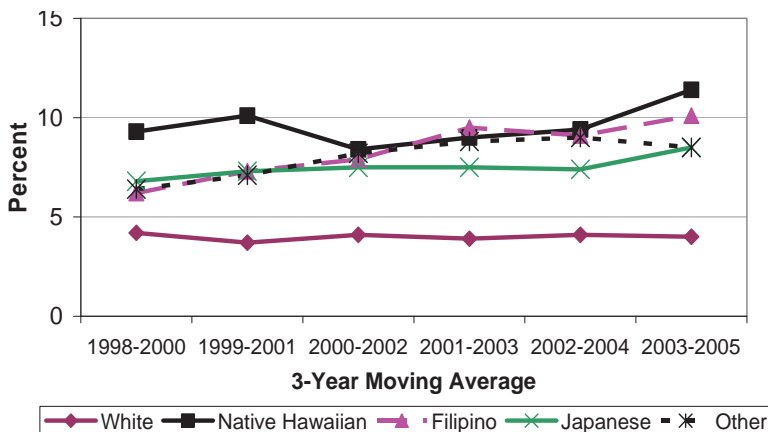
**FINDING:**

- ◆ The proportion of adults reporting diabetes diagnoses between 1998 and 2005 is similar to the trend seen in the BRFSS.

\*Adjusted by age to 2000 U.S. Standard

SOURCE: Hawaii Health Survey - Hawaii Department of Health, Office of Health Status Monitoring

**Figure 41. Trends in Adult Diabetes Prevalence by Ethnicity, HHS 3-year Moving Average, Hawaii 1998-2005\***



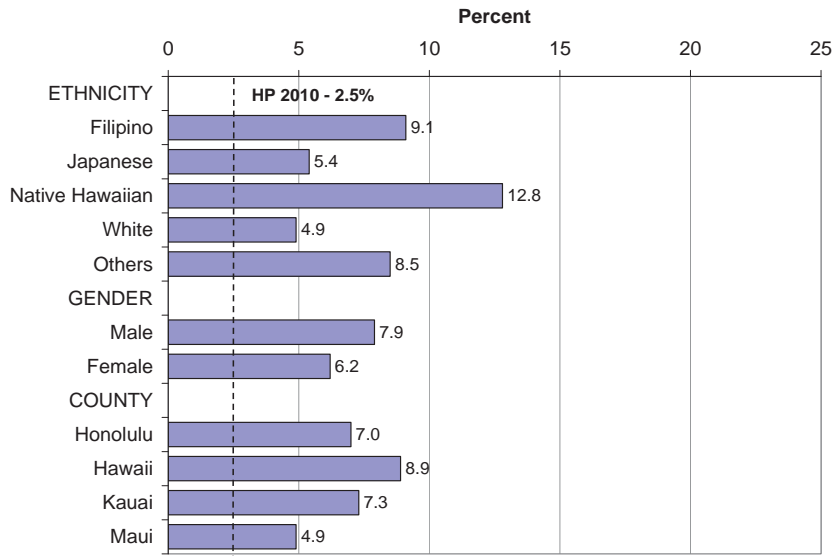
**FINDING:**

- ◆ White adults had consistently the lowest reported proportions of a diabetes diagnosis between 1998 and 2005.

\*Adjusted by age to 2000 U.S. Standard

SOURCE: Hawaii Health Survey - Hawaii Department of Health, Office of Health Status Monitoring

Figure 42. Adult Diabetes Prevalence by Selected Characteristics, BRFSS, Hawaii 2005\*



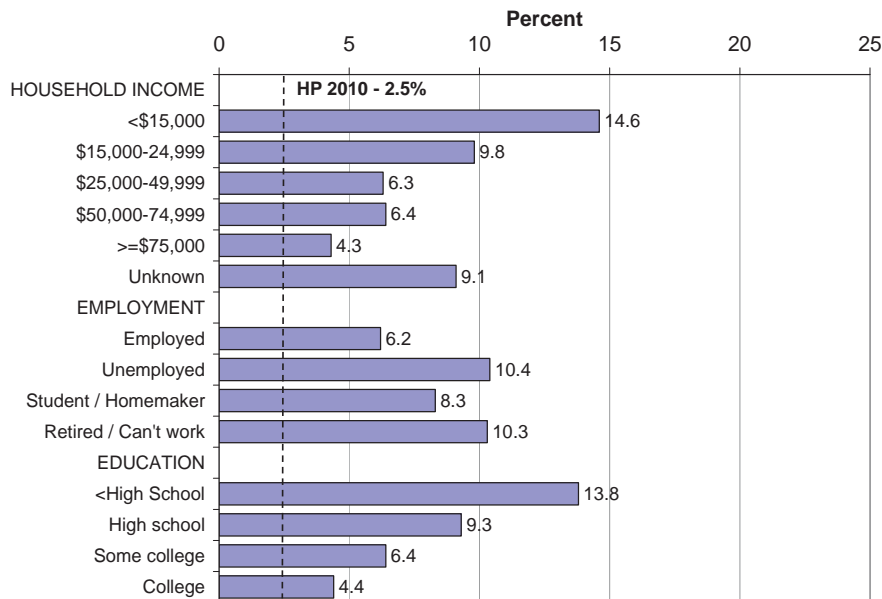
**FINDING:**

◆ Native Hawaiians reported a significantly ( $p < .05$ ) higher proportion of adult diabetes diagnoses compared to Whites and Japanese.

\*Adjusted by age to 2000 U.S. Standard

**SOURCE:** Hawaii BRFSS - Hawaii Department of Health

Figure 43. Adult Diabetes Prevalence by Socioeconomic Status, BRFSS, Hawaii 2005\*



**FINDING:**

◆ Adults who had the lowest household income and the least amount of education reported significantly ( $p < .05$ ) higher proportions with adult diabetes than adults with the highest income and education.

\*Adjusted by age to 2000 U.S. Standard

**SOURCE:** Hawaii BRFSS - Hawaii Department of Health

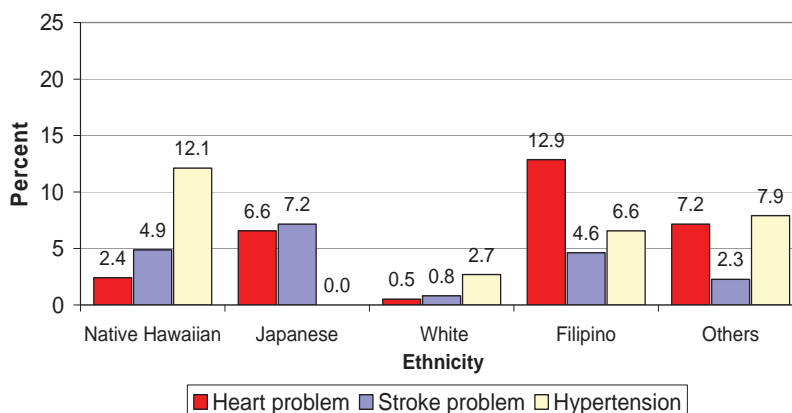
# CVD-ASSOCIATED DISABILITIES

CVD often causes a level of disability among victims. After suffering a cardiovascular event, victims may experience activity limitations. In 2002, the BRFSS asked respondents if they have ever experienced activity limitations due to a health condition. Those who answered *yes* were then asked to identify the reason for their limitation. Three reported CVD-associated reasons for activity limitations were *heart problem*, *stroke problem*, and *hypertension*<sup>22</sup>. Figures 45 and 46 display the percentages of people who identified a CVD-related condition as a reason for their activity limitation. The data are grouped by age and ethnicity.

**Figure 44. Self-Reported Conditions Causing Activity Limitation (Disability) Among Adults (18-64) by Ethnicity, BRFSS, Hawaii 2002**

**FINDING:**

- ◆ Among Native Hawaiians, hypertension was the most reported reason given for CVD-associated activity limitations.
- ◆ For Filipinos, heart problem was the most reported reason given for CVD-associated activity limitation.

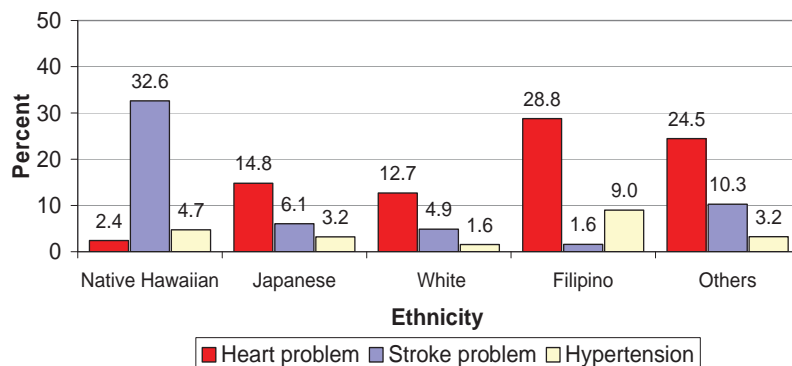


SOURCE: Hawaii BRFSS - Hawaii Department of Health

**Figure 45. Self-Reported Conditions Causing Activity Limitation (Disability) Among Elderly Adults (65+) by Ethnicity, BRFSS, Hawaii 2002**

**FINDING:**

- ◆ More elderly Native Hawaiian adults reported stroke as a reason for activity limitation.
- ◆ Filipino elderly adults reported more disability due to heart problems than other ethnic groups.



SOURCE: Hawaii BRFSS - Hawaii Department of Health



# HOSPITAL DISCHARGES AND CHARGES

The toll of CVD can also be assessed through its impact on the healthcare system by examining the number of hospital discharges, length of stay, and associated charges for CVD hospital treatment. In 2005, the amount in hospital charges due to CVD totaled over \$604 million. The following tables and figures display this information for 2005. Note that these charges do not reflect the total monetary impact of CVD. They only include charges that were incurred in a hospital setting and do not account for rehabilitation costs or work productivity loss. The monetary charges are also not adjusted for inflation over time.

## FINDING:

- ◆ Most of the CVD hospital discharges in 2005 involved Coronary Heart Disease.
- ◆ Stroke patients stayed in the hospital the longest.
- ◆ Acute Myocardial Infarctions was the most expensive form of CVD to treat.
- ◆ Total CVD hospital charges exceeded \$604 million in 2005.

	Coronary Heart Disease	Stroke	Acute Myocardial Infarction	TOTAL CVD
Total Discharges	<b>6,101</b>	2,854	2,940	19,103
Total Charges	\$223,827,188	\$92,323,422	\$119,267,813	<b>\$604,793,282</b>
Average Length of Stay	5.0	<b>7.7</b>	6.4	5.7
Average Charge per discharge	\$36,686.97	\$32,348.78	<b>\$40,567.28</b>	\$31,659.60
<b>SOURCE:</b> Hawaii Health Information Corporation				
NOTE: Cardiovascular Diseases include the following primary ICD-9 definitions: Total cardiovascular diseases (390-459); Coronary heart disease (402, 410-414, 429.2); Stroke (430-434, 436-438); Acute myocardial infarction (410)				

**Table 7. CVD-Associated Hospital Discharges by Selected Characteristics, HHIC, Hawaii 2005**

Discharged	Coronary Heart Disease		Stroke		Acute Myocardial Infarction		TOTAL CVD	
		%		%		%		%
Males	3,929	64.4%	1,482	51.9%	1,834	62.4%	11,086	58.0%
Females	2,172	35.6%	1,372	48.1%	1,106	37.6%	8,017	42.0%
Filipino	886	14.5%	405	14.2%	442	15.0%	2,593	13.6%
Japanese	1,173	19.2%	729	25.5%	572	19.5%	3,864	20.2%
Native Hawaiian	725	11.9%	283	9.9%	325	11.1%	2,565	13.4%
White	1,516	24.8%	613	21.5%	733	24.9%	4,582	24.0%
Other	1,059	17.4%	513	18.0%	503	17.1%	3,303	17.3%
Unknown/Not Applicable	742	12.2%	311	10.9%	368	12.5%	2,196	11.5%
Honolulu County	4,861	79.7%	2,177	76.3%	2,274	77.3%	14,809	77.5%
Hawaii County	676	11.1%	296	10.4%	431	14.7%	2,010	10.5%
Kauai County	183	3.0%	127	4.4%	88	3.0%	723	3.8%
Maui County	381	6.2%	254	8.9%	197	6.7%	1,561	8.2%
<b>TOTAL</b>	<b>6,101</b>	<b>100%</b>	<b>2,854</b>	<b>100%</b>	<b>2,940</b>	<b>100%</b>	<b>19,103</b>	<b>100%</b>

**SOURCE:** Hawaii Health Information Corporation  
**NOTE:** Cardiovascular Diseases include the following primary ICD-9 definitions: Total cardiovascular diseases (390-459); Coronary heart disease (402, 410-414, 429.2); Stroke (430-434, 436-438); Acute myocardial infarction (410)

**FINDING:** More men were discharged for CVD compared to women in 2005. Whites made up the highest percentage of hospital discharges for coronary heart disease, acute myocardial infarction, and total CVD. Japanese made up the highest percentage of hospital discharges for stroke. The majority of hospital discharges for total CVD were in Honolulu County.

**Table 8. CVD-Associated Hospital Discharges and Average Length of Stay (ALOS) by Payer, HHIC, Hawaii 2005**

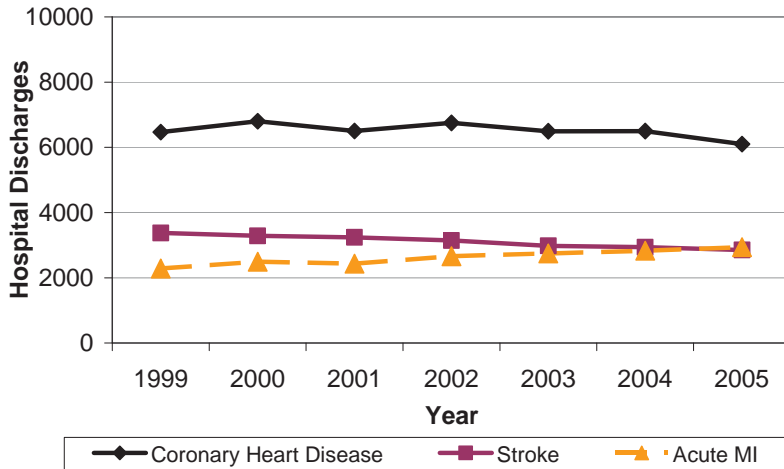
**FINDING:**

- ◆ The majority of CVD-associated hospital discharges were paid by Medicare.
- ◆ The number of discharges paid for by Medicare for Total CVD is more than double the next payer (Private Insurance).
- ◆ Those who *self pay* had the lowest average length of hospital stay due to CVD.

Payer	Coronary Heart Disease		Stroke		Total CVD	
	Discharges	ALOS	Discharges	ALOS	Discharges	ALOS
Department of Defense	301	5.3	92	8.6	998	5.5
Medicaid/Quest	461	5.0	210	8.3	1,691	6.0
Medicare	<b>3,208</b>	5.6	<b>1,795</b>	7.5	<b>11,032</b>	6.2
Private Insurance	2,034	4.0	701	8.2	5,059	4.9
Self Pay	84	<b>3.0</b>	43	<b>5.3</b>	268	<b>3.9</b>
Others	13	4.2	13	5.9	55	5.4
<b>TOTAL</b>	<b>6,101</b>	<b>5.0</b>	<b>2,854</b>	<b>7.7</b>	<b>19,103</b>	<b>5.7</b>

**SOURCE:** Hawaii Health Information Corporation  
**NOTE:** Cardiovascular Diseases include the following primary ICD-9 definitions: Total cardiovascular diseases (390-459); Coronary heart disease (402, 410-414, 429.2); Stroke (430-434, 436-438)

Figure 46. Trends in CVD-Associated Hospital Discharges, HHIC, Hawaii 1999-2005

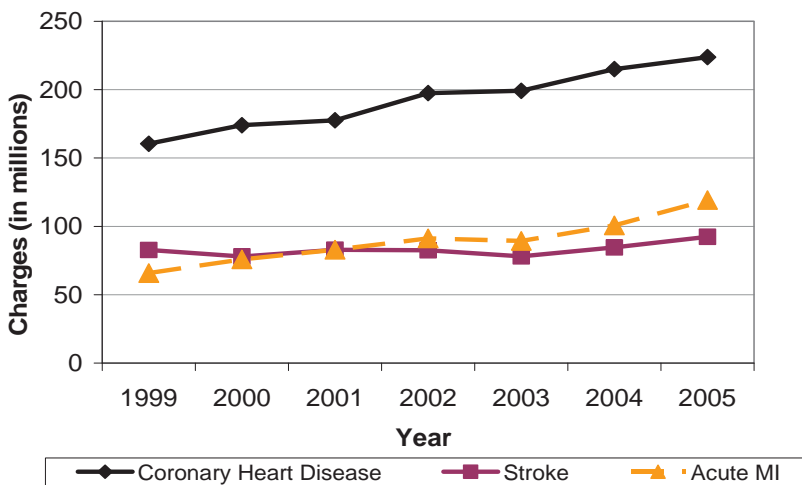


**FINDING:**

- ◆ Since 1999, most CVD-related hospital discharges were for coronary heart disease.
- ◆ Discharges due to heart failure and acute myocardial infarction have slightly increased since 1999.

SOURCE: Hawaii Health Information Corporation

Figure 47. Trends in CVD-Associated Hospital Charges, HHIC, Hawaii 1999-2005



**FINDING:**

- ◆ Hospital charges due to CVD have increased since 1999.
- ◆ Charges associated with coronary heart disease have increased the most.
- ◆ Increasing charges are seen despite decreasing trends in discharges seen in Fig 43.

SOURCE: Hawaii Health Information Corporation

## NEXT STEPS/CONCLUSIONS

As noted in the introduction, the CVD Data Workgroup studied mortality, prevalence, hospital, emergency medical services (EMS), and rehabilitation data. While acquisition of all CVD-related data has not been completed due to lack of resources and funding, this CVD burden document presents Hawaii's morbidity/mortality data, risk factor and risk marker data, and hospital discharge data. It is anticipated that other data (hospital discharge data, EMS/pre-hospital data, additional CVD-related modules for the Behavioral Risk Factor Surveillance System) will be analyzed in the future, and described more fully in a subsequent burden report. The subsequent document will provide additional information on CVD burden based on assessment of the systems of response, treatment, care and rehabilitation.

This report presents the most recent data on CVD deaths, hospitalizations, and risk behaviors in Hawaii. As shown in this report, CVD continues to be a burden to the people of Hawaii and to the healthcare system. Although Hawaii has lower CVD mortality rates compared to the nation, there are a number of geographic and ethnic disparities that persist. Risk factor prevalence data from the BRFSS and HHS further highlight these geographic and ethnic differences, and also reveals disparities by socioeconomic status. Specific populations where the burden of CVD is disproportionately high include Hawaii County residents, Native Hawaiians, Filipinos, and those in the lowest socioeconomic (household income, education, and employment status) levels. The persistence of CVD burden among these groups over the past years suggests the need for targeted interventions. Programs that emphasize policy, environmental, and behavioral changes within these populations may begin to curb the impact of CVD.

Reducing CVD burden in the state involves lowering high blood pressure, reducing high cholesterol, not smoking, engaging in more physical activity, managing diabetes, and controlling weight. This requires a collaborative effort between individuals, communities, organizations, and government agencies. By working together, the people of Hawaii can fight CVD, save lives, and create a healthier Hawaii.



# REFERENCES

---

- 1 Kochanek KD, Murphy SL, Anderson RN, Scott C. Deaths: Final data for 2002. National vital statistics reports; vol 53 no 5. Hyattsville, Maryland: National Center for Health Statistics; 2004.
- 2 Heart Disease and Stroke Statistics—2006 Update. American Heart Association; 2005.
- 3 Centers for Disease Control and Prevention, National Center for Chronic Disease Prevention and Health Promotion, Division of Heart Disease and Stroke Prevention. Stroke – Facts and Statistics. [http://www.cdc.gov/stroke/stroke\\_facts.htm](http://www.cdc.gov/stroke/stroke_facts.htm). Accessed December 2006.
- 4 Hawaii Coalition to Prevent Cardiovascular Disease. Hawaii Strategic Plan to Prevent Cardiovascular Disease. Honolulu: Hawaii State Department of Health. 1997.
- 5 Centers for Disease Control and Prevention. Prevalence of Heart Diseases – United States 2005. *Morbidity and Mortality Weekly Report* 2007;56(6):113-118. Available at <http://www.cdc.gov/mmwr/preview/mmwrhtml/mm5606a2.htm>. Accessed September 2007.
- 6 Centers for Disease Control and Prevention. Prevalence of Stroke – United States 2005. *Morbidity and Mortality Weekly Report* 2007;56(19):469-474. Available at <http://www.cdc.gov/mmwr/preview/mmwrhtml/mm5619a2.htm>. Accessed September 2007.
- 7 Sacco, RL, Benjamin, EJ, Broderick, JP, et al. *Risk Factors*. *Stroke*, Jul 1997; 28: 1507-1517.
- 8 American Heart Association. Common Misconceptions. <http://www.americanheart.org/presenter.jhtml?identifier=3008517>. Accessed December 2006.
- 9 Centers for Disease Control and Prevention, National Center for Chronic Disease Prevention and Health Promotion, Division of Heart Disease and Stroke Prevention. [http://www.cdc.gov/Stroke/risk\\_factors.htm](http://www.cdc.gov/Stroke/risk_factors.htm). Accessed November 2006.
- 10 Worth, RM, Kato, H, Rhoads, GG, et al. *Epidemiologic studies of CHD and stroke in Japanese men living in Japan, Hawaii, and California: Mortality*. *American J. Epidemiol.* 1975: 102: 481-490.
- 11 U.S. Department of Health and Human Services. *Reducing the Health Consequences of Smoking – 25 Years of Progress: A Report of the Surgeon General*. Atlanta, GA: U.S. Department of Health and Human Services, CDC; 1989. DHHS Pub. No. (CDC) 89-8411.
- 12 Novotny TE, Giovino GA. Tobacco use. In: Brownson RC, Remington PL, Davis JR (eds). *Chronic Disease Epidemiology and Control*. Washington, DC: American Public Health Association; 1998. p.117-148.
- 13 Centers for Disease Control and Prevention. [Annual smoking-attributable mortality, years of potential life lost, and economic costs – United States, 1995–1999](http://www.cdc.gov/mmwr/preview/mmwrhtml/mm5114a3.htm). *Morbidity and Mortality Weekly Report* 2002;51(14):300–303. Accessed: February 2004.
- 14 Centers for Disease Control and Prevention, 301.
- 15 Blair, SN, Kohl, HW, Paffenbarger, RS, et al. *Physical fitness and all-cause mortality: A prospective study of healthy men and women*. *JAMA* 1989, 262: 2395-2401.
- 16 Centers for Disease Control and Prevention, National Center for Chronic Disease Prevention and Health Promotion, Division of Nutrition and Physical Activity. Defining Overweight and Obesity. <http://www.cdc.gov/nccdphp/dnpa/obesity/defining.htm>. Accessed October 2007.
- 17 Sempos, C, Rulwood, R, Haines, C, et al. *The prevalence of high blood cholesterol levels among adults in the United States*. *JAMA* 1989, 262: 45-52.
- 18 American Heart Association. *Obesity and Cardiovascular Disease: Pathophysiology, Evaluation, and Effect of Weight Loss*. AHA Scientific Statement. <http://circ.ahajournals.org/cgi/content/full/113/6/898>. Accessed November 2006.
- 19 Centers for Disease Control and Prevention, National Center for Chronic Disease Prevention and Health Promotion, Division of Heart Disease and Stroke Prevention. Risk Factors for Stroke. [http://www.cdc.gov/Stroke/risk\\_factors.htm](http://www.cdc.gov/Stroke/risk_factors.htm). Accessed November 2006.
- 20 Huang, Tianzhu, Salvail, Florentina R., Nguyen, Dung-Hanh and Pobutsky, Ann, *Adult Diabetes Prevalence Measured from the HBRFSS, Survey Shows... The Hawaii Behavioral Risk Factor Surveillance System Special Report, Year 2 Issue 1, September 2004, Department of Health, State of Hawaii.*
- 21 Hirokawa, R, Huang, T, Pobutsky, A, Nogue, M, Salvail, F, Nguyen, HD. (2004). *Hawaii Diabetes Report, 2004*. Hawaii State Department of Health, Honolulu, HI.
- 22 Pobutsky, A, Hirokawa, R, Reyes-Salvail, F. *Estimates of Disability Among Ethnic Groups in Hawaii*. *California Journal of Health Promotion*, 2003, 1: 65-82.

## **APPENDIX A - GLOSSARY AND DATA DEFINITIONS**

Some definitions below are taken from *A Public Health Action Plan to Prevent Heart Disease and Stroke*, published by CDC in 2003.

### **Age-adjusted rates**

The risk of developing cardiovascular disease and its associated risk factors generally increases with age. As a result, various groups within a population that tend to be older appear to possess a higher rate. To address this issue, the mortality and prevalence rates presented in this report have been “age-adjusted.” This statistical technique allows comparison of rates between populations by removing the effect of various age distributions that may exist within those populations. Age-adjustment also enables comparison of the rates in this report to rates in other states and the nation. In this report, mortality and prevalence rates are adjusted using the direct method to the 2000 U.S. standard population. Data comparisons should be limited to data adjusted to the same standard population.

### **Body Mass Index (BMI)**

A measure used in classifying weight categories. Equals weight in kilograms ÷ [height in meters]<sup>2</sup> with a BMI of 20-25 considered normal, 25-29.9 considered overweight and more than 30, obese.

### **Cardiovascular Diseases**

A group of diseases affecting the heart and/or blood vessels, the two most common being heart disease and stroke. Listed in the International Classification of Diseases as *Diseases of the Circulatory System*, which includes ICD-9 codes 390-459 for hospitalizations, and ICD-10 codes I00-I99 for deaths<sup>1</sup>.

### **Cerebrovascular Disease (Stroke)**

Also known as a brain attack, it is the interruption of blood supply to the brain due to a blockage or rupture of a blood vessel. Three types of stroke include ischemic, hemorrhagic, and transient ischemic attack. Refers to hospitalizations with primary ICD-9 codes 430-434, 436-438, as well as deaths classified with primary ICD-10 codes I60-I69.

### **Cholesterol**

“Fatty” molecular compounds obtained from the diet or produced in the body from fatty dietary components. High cholesterol is classified when total blood cholesterol concentration is ≥200 mg/dl.

### **Coronary Heart Disease (CHD)**

A disease caused by impaired circulation in one or more coronary arteries. It is often diagnosed following chest pain or a heart attack. CHD is the most common type of cardiovascular disease causing over 50% of CVD deaths. Refers to hospitalizations with primary ICD-9 codes 402, 410-414, 429.2, as well as deaths classified with primary ICD-10 codes I11, I20-I25.

### **Diabetes (*diabetes mellitus*)**

A metabolic disorder resulting from insufficient production of insulin, commonly leading to cardiovascular complications.

---

<sup>1</sup> World Health Organization. *International Classification of Diseases, Ninth (ICD-9) and Tenth (ICD-10) Revision*. <http://cdc.gov/nchs/icd9.htm>. Accessed August 2007.



### **Ethnicity (BRFSS)**

In the BRFSS, respondents are asked to choose one race from a list to answer the question: “What is your race?” The race list includes Caucasian, Hawaiian, Chinese, Filipino, Japanese, Korean, Samoan, Black, American Indian/Alaska Native/Eskimo/Inuit, Vietnamese, Asian Indian, Portuguese, Guamanian/Chamorro, Puerto Rican, Mexican, Tongan, Laotian, Cambodian, Malaysian, Fijian, Micronesian, and other Asian. In addition, a respondent can specify his/her own ethnicity if it is not listed, or can select a “Don’t Know” or “Not Sure” option, or refuse to answer.

### **Ethnicity (HHS)**

In the HHS, ethnicity is determined by asking the questions: “Of what ethnic background is your mother? Of what ethnic background is your father?” Four answers are accepted from the following list of races: White/Caucasian (European, German, Irish, Italian, English), Hawaiian, Chinese (Taiwanese), Filipino, Japanese (Okinawan), Korean, Vietnamese, Asian Indian, Other Asian (Laotian, Thai, Malaysian), Samoan/Tongan, Black/African American, Native American/Aleut/Eskimo/Inuit, Puerto Rican, Mexican, Portuguese, Guamanian/Chamorro, Other Pacific Islander (Polynesian, Micronesian, Fijian), Other, Don’t Know, and Refused. The responses are coded.

### **Health Disparities**

Differences in the burden and impact of disease among different populations.

### **Healthy People 2010 Objectives<sup>2</sup>**

- *Diabetes*  
Objective 05-03: Reduce the overall rate of diabetes that is clinically diagnosed to 25 overall cases per 1,000 population
- *High Blood Cholesterol*  
Objective 12-14: Reduce the proportion of adults with high total blood cholesterol levels to 17%
- *High Blood Pressure*  
Objective 12-9: Reduce the proportion of adults with high blood pressure to 14%
- *Overweight/Obesity*  
Objective 19-01: Increase the proportion of adults who are at a healthy weight to 60%  
Objective 19-02: Reduce the proportion of adults who are obese to 15%
- *Physical Activity (leisure time activity)*  
Objective 22-01: Reduce the proportion of adults who engage in no leisure-time physical activity to 20%
- *Smoking Status*  
Objective 27-01: Reduce tobacco use (cigarette smoking) by adults to 12%

### **High Blood Pressure**

A condition in which the pressure in arterial circulation is greater than desired. Blood pressure is considered high when systolic pressure is  $\geq 140$  mm Hg or if diastolic pressure is  $\geq 90$  mm Hg.

### **International Classification of Diseases (ICD)**

An international standard used to classify diseases and other health problems recorded on many types of health and vital records including death certificates and hospital records. In addition to enabling the storage and

---

<sup>2</sup> U.S. Department of Health and Human Services. *Healthy People 2010*. 2<sup>nd</sup> ed. With Understanding and Improving Health and Objectives for Improving Health. 2 vols. Washington, DC: U.S. Government Printing Office, November 2000.

retrieval of diagnostic information for clinical and epidemiological purposes, these records also provide the basis for the compilation of national mortality and morbidity statistics. This report presents hospital discharge data using the ICD, Version 9 (ICD-9), as well as mortality data using the ICD, Version 10 (ICD-10).

ICD CODING BY SOURCE FOR THE CIRCULATORY SYSTEM INCLUDING HEART DISEASE AND STROKE		
HEALTH CONDITION	PRIMARY SOURCE	
	ICD-9	ICD-10
Circulatory System	390-459	I00-I99
Cardiovascular Disease	390-448	I00-I09,I11,I13,I20-I51
All Heart Disease	390-398, 402,404-429	I00-I09, I11, I13, I20-I51
Pertaining to Rheumatic Fever or Rheumatic Heart Disease	390-398	I00-I02
Hypertension	401-404	I10-I13
Coronary Heart Disease	402, 410-414, 429.2	I11, I20-I25
(Secondary Hypertension)	405	(I15)
Ischemic Heart Disease	410-414, (429.2)	I11,I20-I25
Pulmonary Heart Disease		I26-I28
Cerebrovascular Disease (Stroke)	430-438 (-435)	I60-I69
Transient Cerebral Ischemic Attacks	435	G45.8, G45.9
Arterial Diseases	440-448	I70-I78
Diseases of Veins and Lymphatics and Other Diseases of Circulatory System	451-459	I80-I89, I95-I99

SOURCE: U.S. Department of Health and Human Services, Office on Women's Health  
 Data 2010 Health People 2010 Database, Operational definitions for all objectives of focus area:12 Heart Disease and Stroke <http://wonder.cdc.gov/DATA2010/OD12.HTM>

### Major Cardiovascular Diseases

A grouping of common types of CVD that includes coronary heart disease, stroke, heart failure, and others. Refers to deaths classified with primary ICD-10 codes I00-I78. It does not include less common forms of CVD classified by ICD-10 codes I79-I99.

### Mortality Rate

The number of deaths within a defined population and specified time interval. In this report, mortality rates are presented in deaths per 100,000 people. Population estimates by county for 1999 are from the State of Hawaii Department of Business, Economic Development and Tourism. 2000-2005 estimates by county are from the National Center for Health Statistics. Population estimates by ethnicity for 2005 are from the Hawaii Health Survey.

### Myocardial Infarction (MI)

Commonly referred to as a heart attack, a MI (or acute MI) is an acute event in which the heart muscle is damaged because of a lack of blood flow from the coronary arteries. Refers to hospitalizations with primary ICD-9 code 410.

### Prevalence

The number of persons with a disease or condition at a specific point in time divided by the total number of persons in the population at that same point in time. In this report, prevalence is presented as the percent of adults with a disease or condition (e.g. diabetes, high blood pressure) within a given year.

$$\frac{\text{For example: } 100 \text{ people with flu in Honolulu in 2005}}{1,000 \text{ total people in Honolulu in 2005}} \times 100 = 10\% \text{ flu prevalence in Honolulu in 2005}$$

## APPENDIX B - SURVEY METHODS AND QUESTIONS

Hawaii is fortunate to have two major health surveys: the Behavioral Risk Factor Surveillance Survey (BRFSS) and the Hawaii Health Survey (HHS). The two surveys have differences in methodology.

Characteristic	BRFSS	HHS
<b>General</b>	National Survey conducted in all states.	Survey specific to Hawaii originally modeled after the National Health Interview Survey.
<b>Focus</b>	Behaviors affecting personal health, selected lifetime and current health conditions. Emerging public health issues and traditional demographic markers.	Assess prevalence of chronic and other health conditions, associated risk factors and demographic and socio-economic markers. Also provides intercensal estimates of Hawaii's population.
<b>Interviewed</b>	Randomly chosen adults on themselves.	Knowledgeable adult on themselves and each household member.
<b>Survey Instrument</b>	Computer Assisted Telephone Interview (CATI) system with different survey instrument.	Computer Assisted Telephone Interview (CATI) system with different survey instrument.
<b>Sampling Design</b>	Disproportionate Stratified Sampling (DSS) Follows protocols from CDC.	Disproportionate stratified, random within island and cluster sampling within household.
<b>Sample Selection</b>	CDC contractor, GENESYS, generates the phone samples.	Process through OHSM, Hawaiian Telcom, SMS Research.
<b>Sample size</b>	At least 6,000 households with one randomly selected adult as respondent.	An estimated 6,000 households per year with adult respondents and approximately 15,000 members.
<b>Sample Question</b>	Have you ever been told by a doctor that you have diabetes?	Has anyone in the household been told by a physician or medical professional that they have diabetes? What are the names (initials) of those household members?
<b>Weighting Scheme</b>	Determined by CDC. Based on the CENSUS and CLARITAS	Done by SMS Research, with Census Data, and OHSM Vital Record Data
<b>Sample weighted to Hawaii</b>	Adult Population	Adult population, households, or total population
<b>Analysis</b>	SAS, SUDAAN	SAS, SUDAAN, Arc View

### Survey (BRFSS) Questions

- *Activity Limitation*

The BRFSS uses the following question to determine activity limitation due to heart disease, stroke or hypertension: "Have you ever experienced activity limitation due to heart disease, stroke, or hypertension?"

- *Diabetes*  
The BRFSS uses the following question to determine diabetes prevalence: “Have you ever been told by a doctor that you have diabetes?”
- *High Blood Cholesterol*  
The BRFSS uses the following question to determine high blood cholesterol prevalence: “Have you ever been told by a doctor, nurse, or other health professional that your blood cholesterol is high?”
- *High Blood Pressure*  
The BRFSS uses the following question to determine high blood pressure, or hypertension, prevalence: “Have you ever been told by a doctor, nurse, or other health professional that you have high blood pressure?”
- *Overweight/Obesity*  
The BRFSS uses Body Mass Index (BMI) as a measure of bodyweight. Cutoffs for weight status are defined as follows: normal weight (BMI<25), overweight (BMI≥25 and <30), and obese (BMI≥30).
- *Physical Activity (leisure time activity)*  
The BRFSS defines “no leisure time activity” as those responding *no* to the question, “During the past month, other than your regular job, did you participate in any physical activities or exercises such as running, calisthenics, golf, gardening, or walking for exercise?”
- *Smoking Status*  
The BRFSS defines a “current smoker” as a person who reports smoking at least 100 cigarettes in his/her lifetime, and still smokes either everyday or some days. A “former smoker” is a person who smoked at least 100 cigarettes in his/her lifetime, but does not smoke anymore.

### Survey (HHS) Questions

- *Diabetes*  
The HHS uses the following questions to determine diabetes prevalence: “Has anyone in the household been told by a physician or medical professional that they have diabetes? What are the names (initials) of those household members?”
- *High Blood Cholesterol*  
The HHS uses the following questions to determine high cholesterol prevalence: “Has anyone in the household been told by a physician or medical professional that they have high cholesterol? What are the names (initials) of those household members?”
- *High Blood Pressure*  
The BRFSS uses the following questions to determine high blood pressure prevalence: “Has anyone in the household been told by a physician or medical professional that they have high blood pressure? What are the names (initials) of those household members?”
- *Overweight/Obesity*  
The HHS uses Body Mass Index (BMI) as a measure of bodyweight. Cutoffs for weight status are defined as follows: normal weight (BMI<25), overweight (BMI≥25 and <30), and obese (BMI≥30). To determine these numbers, the HHS asks the questions: About how much do you weigh without your shoes? About how tall are you without shoes?
- *Smoking Status*  
The HHS uses the following questions to determine smoking prevalence: “Does anyone in your household smoke cigarettes? What are the names (initials) of those household members?”

## APPENDIX C - DATA TABLES (NOTE: CI = Confidence Interval)

Figure 2. Trends in Major Cardiovascular Disease Deaths by County, Hawaii 1999-2005\* (Deaths per 100,000)

	1999	2000	2001	2002	2003	2004	2005
Hawaii	332.2	296.9	298.5	289.0	273.5	252.2	233.6
Honolulu	261.0	259.0	242.5	252.9	235.5	222.6	199.0
Kauai	306.5	252.7	234.0	232.7	215.4	209.6	225.0
Maui	288.1	265.0	225.0	256.5	223.7	215.7	207.7
<b>STATE</b>	274.2	264.2	247.4	256.8	238.4	225.0	205.3

\*Adjusted by age to 2000 U.S. Standard  
SOURCE: Hawaii State Department of Health, Office of Health Status Monitoring

Figure 4. Trends in Coronary Heart Disease Deaths by County, Hawaii 1999-2005\* (Deaths per 100,000)

	1999	2000	2001	2002	2003	2004	2005
Hawaii	153.4	141.5	138.1	127.1	119.9	108.2	99.5
Honolulu	114.4	110.4	96.3	99.3	94.6	88.8	74.3
Kauai	162.3	124.9	121.4	120.1	108.2	92.5	112.1
Maui	142.8	123.2	100.2	118.9	99.1	107.4	93.9
<b>STATE</b>	124.3	116.3	103.4	105.6	99.0	93.2	81.3

\*Adjusted by age to 2000 U.S. Standard  
SOURCE: Hawaii State Department of Health, Office of Health Status Monitoring

Figure 6. Trends in Stroke Mortality Rate by County, Hawaii 1999-2005\* (Deaths per 100,000)

	1999	2000	2001	2002	2003	2004	2005
Hawaii	75.5	68.3	78.6	79.2	69.0	46.9	51.4
Honolulu	61.7	60.3	56.3	55.9	50.1	47.4	42.9
Kauai	58.3	48.8	51.7	51.1	37.5	47.4	46.3
Maui	48.7	51.9	48.4	60.6	47.1	35.4	38.0
<b>STATE</b>	61.9	59.8	58.1	59.0	51.7	46.2	43.5

\*Adjusted by age to 2000 U.S. Standard  
SOURCE: Hawaii State Department of Health, Office of Health Status Monitoring

Figure 10. Trends in Adult High Blood Pressure Prevalence, BRFSS, Hawaii 1999-2005\*

Year	Percent	95% C.I.
1999	22.6	20.5--24.9
2001	23.7	22.2--25.2
2003	22.2	20.8--23.6
2005	23.1	21.8--24.5

\*Adjusted by age to 2000 U.S. Standard  
SOURCE: Hawaii BRFSS, Hawaii State Department of Health

Figure 11. Trends in Adult High Blood Pressure Prevalence, HHS 3-Year Moving Average, Hawaii 1998-2005\*

Year	Percent	95% C.I.
1998-2000	19.5	18.7--20.3
1999-2001	19.8	19.0--20.6
2000-2002	19.4	18.2--20.7
2001-2003	20.1	18.9--21.4
2002-2004	21.1	19.8--22.3
2003-2005	22.2	21.4--23.1

\*Adjusted by age to 2000 U.S. Standard  
SOURCE: Hawaii State Department of Health, Office of Health Status Monitoring

Figure 13. Adult High Blood Pressure Prevalence by selected characteristics, BRFSS, Hawaii 2005\*

Ethnicity	Percent	95% C.I.
Filipino	25.8	22.9--28.9
Native Hawaiian	30.3	27.5--33.3
Japanese	27.0	24.4--29.7
White	18.0	16.5--19.5
Others	23.0	20.5--25.7
<b>Gender</b>		
Male	24.5	22.9--26.1
Female	21.8	20.7--23.0
<b>County</b>		
Hawaii	23.6	21.1--24.6
Honolulu	22.8	22.3--24.9
Kauai	23.4	20.5--26.6
Maui	21.2	19.3--23.3

\*Adjusted by age to 2000 U.S. Standard  
SOURCE: Hawaii BRFSS, Hawaii State Department of Health

Figure 14. Adult High Blood Pressure Prevalence by socioeconomic status, BRFSS, Hawaii 2005\*

Household Income	Percent	95% C.I.
<\$15,000	35.6	29.3--42.4
\$15,000-24,999	25.9	22.3--30.0
\$25,000-49,999	24.7	22.2--27.3
\$50,000-74,999	23.0	20.0--26.3
>=\$75,000	17.9	15.3--20.9
Unknown	22.1	18.5--26.2
<b>Employment</b>		
Employed	21.4	19.4--23.6
Unemployed	34.1	25.6--43.8
Student/ Homemaker	18.4	13.8--24.2
Retired/Can't Work	27.5	23.4--32.0
<b>Education</b>		
<High School	31.9	25.6--39.0
High school	26.8	24.2--29.7
Some college	23.9	21.5--26.5
College	18.1	16.3--19.9

\*Adjusted by age to 2000 U.S. Standard  
SOURCE: Hawaii BRFSS, Hawaii State Department of Health

Figure 15. Trends in High Blood Pressure Prevalence by Ethnicity, HHS 3-year moving average, Hawaii 1998-2005

Year	Filipino	Native Hawaiian	Japanese	White	Other
1998-2000	24.9	22.8	22.6	15.0	17.7
1999-2001	22.8	24.1	23.4	14.3	19.8
2000-2002	24.1	24.5	22.6	13.9	18.8
2001-2003	25.2	24.8	23.0	14.6	20.1
2002-2004	27.1	27.0	24.1	15.4	20.2
2003-2005	28.0	27.2	25.8	16.7	21.8

\*Adjusted by age to 2000 U.S. Standard  
SOURCE: Hawaii State Department of Health, Office of Health Status Monitoring

Figure 16. Trends in Adult High Blood Cholesterol Prevalence, BRFSS, Hawaii 1999-2005

Year	Percent	95% C.I.
1999	24.9	22.1--28.0
2001	22.7	20.9--24.6
2003	23.9	22.2--25.7
2005	30.5	28.6--32.4

\*Adjusted by age to 2000 U.S. Standard  
SOURCE: Hawaii BRFSS, Hawaii State Department of Health

Figure 17. Trends in Adult High Blood Cholesterol Prevalence, HHS 3-Year Moving Average, Hawaii 1998-2005\*

Year	Percent	95% C.I.
1998-2000	19.8	19.0--20.7
1999-2001	20.2	19.4--21.0
2000-2002	18.7	17.6--19.9
2001-2003	19.9	18.8--21.2
2002-2004	20.6	19.4--21.8
2003-2005	18.8	18.1--19.6

\*Adjusted by age to 2000 U.S. Standard  
SOURCE: Hawaii State Department of Health, Office of Health Status Monitoring

Figure 18. Adult High Blood Cholesterol Prevalence by selected characteristics, BRFSS, Hawaii 2005\*

Ethnicity	Percent	95% C.I.
Filipino	27.7	23.9--31.8
Native Hawaiian	30.1	26.7--33.8
Japanese	31.9	28.7--35.3
White	26.5	24.6--28.4
Others	27.0	24.1--30.1
<b>Gender</b>		
Male	29.2	27.4--31.2
Female	26.9	25.4--28.6
<b>County</b>		
Hawaii	26.3	24.2--28.6
Honolulu	28.7	27.1--30.3
Kauai	25.7	22.2--29.4
Maui	28.4	25.4--31.7

\*Adjusted by age to 2000 U.S. Standard  
SOURCE: Hawaii BRFSS, Hawaii State Department of Health

Figure 19. Adult High Blood Cholesterol Prevalence by socioeconomic status, BRFSS, Hawaii 2005\*

Household Income	Percent	95% C.I.
<\$15,000	33.1	25.9--41.2
\$15,000-24,999	32.0	26.1--38.6
\$25,000-49,999	29.4	26.2--32.8
\$50,000-74,999	29.3	25.4--33.5
>=\$75,000	34.6	30.2--39.4
Unknown	31.5	25.9--37.7
<b>Employment</b>		
Employed	28.9	26.5--31.4
Unemployed	32.3	21.1--46.1
Student/Homemaker	30.4	24.1--37.5
Retired/Can't Work	38.6	30.0--48.1
<b>Education</b>		
<High School	29.5	21.3--39.2
High school	30.5	26.6--34.8
Some college	32.0	29.0--35.3
College	31.1	27.9--34.5

\*Adjusted by age to 2000 U.S. Standard  
SOURCE: Hawaii BRFSS, Hawaii State Department of Health

Figure 20. Trends in Adult High Blood Cholesterol Prevalence by Ethnicity, HHS 3-year moving average, Hawaii 1998-2005\*

Year	Filipino	Native Hawaiian	Japanese	White	Other
1998-2000	18.7	18.1	25.0	16.8	19.7
1999-2001	20.4	18.5	24.8	16.7	21.0
2000-2002	20.2	17.1	22.6	16.3	19.4
2001-2003	21.8	17.8	23.9	17.4	19.9
2002-2004	21.2	17.6	25.3	18.9	20.3
2003-2005	20.3	16.8	23.0	16.5	17.9

\*Adjusted by age to 2000 U.S. Standard  
SOURCE: Hawaii State Department of Health, Office of Health Status Monitoring

Figure 21. Trends in Adult Smoking Prevalence, BRFSS, Hawaii 1998-2005\*

Year	Percent	95% C.I.
1998	19.4	17.2--21.7
1999	18.5	16.4--20.8
2000	19.6	18.3--21.1
2001	20.6	19.0--22.3
2002	21.0	19.7--22.5
2003	17.4	16.0--19.0
2004	17.3	15.2--19.6
2005	17.1	15.8--18.4

\*Adjusted by age to 2000 U.S. Standard  
SOURCE: Hawaii BRFSS, Hawaii State Department of Health

Figure 22. Trends in Adult Smoking Prevalence, HHS 3-Year Moving Average, Hawaii 2000-2005\*

Year	Percent	95% C.I.
2000-2002	16.9	15.8--18.1
2001-2003	16.0	14.9--17.2
2002-2004	15.3	14.2--16.5
2003-2005	15.5	14.7--16.3

\*Adjusted by age to 2000 U.S. Standard  
SOURCE: Hawaii State Department of Health, Office of Health Status Monitoring

Figure 23. Percent of Adult Smoking Prevalence by selected characteristics, BRFSS, Hawaii 2005\*

Characteristic	Percent	95% C.I.
<b>Ethnicity</b>		
Filipino	14.1	11.6--16.9
Native Hawaiian	26.8	23.8--30.0
Japanese	15.1	12.7--17.9
White	17.5	15.9--19.2
Others	17.1	15.0--19.5
<b>Gender</b>		
Male	19.8	18.2--21.4
Female	15.4	14.3--16.6
<b>County</b>		
Hawaii	19.7	17.7--21.9
Honolulu	16.8	15.6--18.1
Kauai	20.7	17.3--24.5
Maui	19.8	17.3--22.4

\*Adjusted by age to 2000 U.S. Standard  
SOURCE: Hawaii BRFSS, Hawaii State Department of Health

Figure 24. Percent of Adult Smoking Prevalence by socioeconomic status, BRFSS, Hawaii 2005\*

Characteristic	Percent	95% C.I.
<b>Household Income</b>		
<\$15,000	30.1	23.9--37.0
\$15,000-24,999	23.1	19.1--27.7
\$25,000-49,999	16.2	13.9--18.7
\$50,000-74,999	15.7	13.0--19.0
>=\$75,000	13.9	11.2--17.2
Unknown	16.2	12.8--20.2
<b>Employment</b>		
Employed	17.3	15.6--19.2
Unemployed	28.4	20.1--38.5
Student/Homemaker	16.6	12.3--21.9
Retired/Can't Work	24.4	18.8--31.1
<b>Education</b>		
<High School	35.5	27.3--44.7
High school	22.3	19.6--25.2
Some college	18.5	16.2--21.0
College	10.2	8.5--12.2

\*Adjusted by age to 2000 U.S. Standard  
SOURCE: Hawaii BRFSS, Hawaii State Department of Health

Figure 25. Trends in Adult Smoking Prevalence by Ethnicity, HHS 3-year moving average, Hawaii 1998-2005\*

Year	Filipino	Native Hawaiian	Japanese	White	Other
1998-2000	14.3	24.3	14.5	16.2	17.6
1999-2001	16.0	23.0	16.4	16.2	17.0
2000-2002	15.3	22.6	15.8	15.4	15.0
2001-2003	14.1	22.0	15.1	14.9	13.2
2002-2004	12.4	21.9	12.9	14.5	13.2
2003-2005	12.7	21.6	13.1	15.1	14.8

\*Adjusted by age to 2000 U.S. Standard  
SOURCE: Hawaii State Department of Health, Office of Health Status Monitoring



Figure 26. Trends in Adults Reporting No Leisure-Time Physical Activity, BRFSS, Hawaii 2001-2005\*

Year	Percent	95% C.I.
2001	18.8	17.3--20.4
2002	16.1	14.9--17.3
2003	18.1	16.7--19.6
2004	20.4	18.2--22.8
2005	19.3	17.9--20.6

\*Adjusted by age to 2000 U.S. Standard  
SOURCE: Hawaii BRFSS, Hawaii State Department of Health

Figure 28. Percent of Adults Reporting No Leisure-Time Physical Activity by socioeconomic status, BRFSS, Hawaii 2005\*

Household Income	Percent	95% C.I.
<\$15,000	31.0	24.6--38.3
\$15,000-24,999	25.1	20.9--29.9
\$25,000-49,999	18.7	16.4--21.3
\$50,000-74,999	16.1	13.4--19.2
>=\$75,000	12.8	10.3--15.9
Unknown	21.7	21.5--30.4
Employment		
Employed	18.4	16.5--20.5
Unemployed	25.8	16.5--37.9
Student/Homemaker	18.3	13.8--23.8
Retired/Can't Work	27.8	21.9--34.5
Education		
<High School	33.6	25.6--42.8
High school	27.3	24.6--30.2
Some college	17.5	15.2--20.0
College	12.4	10.4--14.9

\*Adjusted by age to 2000 U.S. Standard  
SOURCE: Hawaii BRFSS, Hawaii State Department of Health

Figure 30. Trends in Adult Overweight Prevalence, HHS 3-Year Moving Average, Hawaii 1998-2005\*

Year	Percent	95% C.I.
1998-2000	32.3	31.3--33.4
1999-2001	32.1	31.1--33.1
2000-2002	31.0	29.6--32.5
2001-2003	31.0	29.5--32.5
2002-2004	31.2	29.7--32.8
2003-2005	32.9	31.8--34.0

\*Adjusted by age to 2000 U.S. Standard  
SOURCE: Hawaii State Department of Health, Office of Health Status Monitoring

Figure 27. Percent of Adults Reporting No Leisure-Time Physical Activity by selected characteristics, BRFSS, Hawaii 2005\*

Ethnicity	Percent	95% C.I.
Filipino	27.9	24.6--31.4
Native Hawaiian	20.5	17.8--23.5
Japanese	20.0	17.6--22.7
White	12.7	11.5--14.1
Others	20.5	18.0--23.2
Gender		
Male	17.2	15.7--18.8
Female	21.0	19.7--22.3
County		
Hawaii	18.8	17.0--20.7
Honolulu	19.2	17.9--20.5
Kauai	16.8	14.1--19.4
Maui	20.1	17.6--23.0

\*Adjusted by age to 2000 U.S. Standard  
SOURCE: Hawaii BRFSS, Hawaii State Department of Health

Figure 29. Trends in Adult Overweight (BMI≥25-29.9) Prevalence, BRFSS, Hawaii 1998-2005\*

Year	Percent	95% C.I.
1998	31.7	29.1--34.4
1999	33.7	31.0--36.4
2000	33.6	32.0--35.2
2001	32.6	30.8--34.5
2002	34.9	33.3--36.5
2003	32.3	30.5--34.2
2004	30.4	27.9--33.1
2005	32.3	30.8--33.9

\*Adjusted by age to 2000 U.S. Standard  
SOURCE: Hawaii BRFSS, Hawaii State Department of Health

Figure 31. Trends in Adult Overweight Prevalence by Ethnicity, HHS 3-year moving average, Hawaii 1998-2005\*

Year	Filipino	Native Hawaiian	Japanese	White	Other
1998-2000	33.0	34.6	31.8	32.3	31.3
1999-2001	34.2	33.2	30.1	33.0	31.3
2000-2002	34.0	31.4	29.9	31.5	29.7
2001-2003	35.5	31.1	29.4	31.8	29.4
2002-2004	33.9	32.4	30.4	31.2	29.9
2003-2005	35.1	35.0	30.2	33.7	30.9

\*Adjusted by age to 2000 U.S. Standard  
SOURCE: Hawaii State Department of Health, Office of Health Status Monitoring

**Figure 32. Adult Overweight Prevalence by Selected Characteristics, BRFSS, Hawaii 2005\***

Ethnicity	Percent	95% C.I.
Filipino	33.7	29.3--38.5
Native Hawaiian	30.2	26.2--34.5
Japanese	35.9	32.0--40.0
White	35.5	32.9--38.1
Others	29.0	25.1--33.2
<b>Gender</b>		
Male	40.7	38.1--43.3
Female	25.9	24.0--27.8
<b>County</b>		
Hawaii	35.5	32.5--38.6
Honolulu	33.2	31.1--35.3
Kauai	31.3	26.9--36.0
Maui	31.3	27.8--34.9

\*Adjusted by age to 2000 U.S. Standard  
SOURCE: Hawaii BRFSS, Hawaii State Department of Health

**Figure 33. Adult Overweight Prevalence by Socioeconomic Status, BRFSS, Hawaii 2005\***

Household Income	Percent	95% C.I.
<\$15,000	21.7	17.0--27.3
\$15,000-24,999	29.5	25.2--34.1
\$25,000-49,999	33.8	30.8--36.9
\$50,000-74,999	31.9	28.3--35.7
>=\$75,000	40.0	36.1--44.0
Unknown	30.5	25.8--35.6
<b>Employment</b>		
Employed	35.3	33.0--37.7
Unemployed	29.8	19.4--42.7
Student/Homemaker	26.8	21.5--32.8
Retired/Can't Work	29.8	23.8--36.5
<b>Education</b>		
<High School	28.4	21.3--36.7
High school	33.4	30.4--36.6
Some college	31.8	29.0--34.8
College	33.9	31.2--36.7

\*Adjusted by age to 2000 U.S. Standard  
SOURCE: Hawaii BRFSS, Hawaii State Department of Health

**Figure 34. Trends in Adult Obesity (BMI≥30) Prevalence, BRFSS, Hawaii 1998-2005\***

Year	Percent	95% C.I.
1998	15.4	13.3--17.6
1999	15.3	13.4--17.4
2000	15.3	14.0--16.7
2001	17.5	15.9--19.2
2002	16.6	15.3--17.9
2003	15.8	14.4--17.2
2004	20.1	17.6--22.9
2005	19.2	17.8--20.6

\*Adjusted by age to 2000 U.S. Standard  
SOURCE: Hawaii BRFSS, Hawaii State Department of Health

**Figure 35. Trends in Adult Obesity Prevalence, HHS 3-Year Moving Average, Hawaii 1998-2005\***

Year	Percent	95% C.I.
1998-2000	13.6	12.9--14.4
1999-2001	14.6	13.9--15.3
2000-2002	18.0	16.5--19.5
2001-2003	19.5	18.0--21.0
2002-2004	19.8	18.3--21.3
2003-2005	18.0	17.1--18.9

\*Adjusted by age to 2000 U.S. Standard  
SOURCE: Hawaii State Department of Health, Office of Health Status Monitoring

**Figure 36. Trends in Adult Obesity Prevalence by Ethnicity, HHS 3-year moving average, Hawaii 1998-2005\***

Year	Filipino	Native Hawaiian	Japanese	White	Other
1998-2000	10.0	27.7	10.3	11.8	12.8
1999-2001	11.7	28.5	11.4	11.8	14.1
2000-2002	10.9	35.3	11.4	13.1	19.2
2001-2003	10.9	37.7	11.8	14.4	22.4
2002-2004	11.6	37.9	12.5	15.2	22.3
2003-2005	13.0	33.3	14.2	14.4	18.8

\*Adjusted by age to 2000 U.S. Standard  
SOURCE: Hawaii State Department of Health, Office of Health Status Monitoring

**Figure 37. Adult Obesity Prevalence by Selected Characteristics, BRFSS, Hawaii 2005\***

Ethnicity	Percent	95% C.I.
Filipino	13.4	10.6--16.8
Native Hawaiian	43.5	38.7--48.3
Japanese	11.3	9.0--14.1
White	17.9	15.7--20.3
Others	24.1	20.4--28.2
<b>Gender</b>		
Male	22.7	20.5--25.0
Female	16.6	15.0--18.4
<b>County</b>		
Hawaii	23.3	20.5--26.2
Honolulu	19.2	17.5--21.1
Kauai	20.4	16.3--25.2
Maui	18.7	15.8--22.1

\*Adjusted by age to 2000 U.S. Standard  
SOURCE: Hawaii BRFSS, Hawaii State Department of Health

**Figure 38. Adult Obesity Prevalence by Socioeconomic Status, BRFSS, Hawaii 2005\***

Household Income	Percent	95% C.I.
<\$15,000	32.4	25.9--39.7
\$15,000-24,999	22.5	18.7--26.9
\$25,000-49,999	19.7	17.1--22.5
\$50,000-74,999	22.4	19.1--26.1
>=\$75,000	15.1	12.6--18.0
Unknown	18.0	13.9--23.0
<b>Employment</b>		
Employed	19.6	17.7--21.8
Unemployed	34.0	23.4--46.5
Student/Homemaker	17.2	13.0--22.4
Retired/Can't Work	23.8	18.5--30.1
<b>Education</b>		
<High School	33.5	25.7--42.4
High school	25.4	22.5--28.4
Some college	21.9	19.4--24.6
College	12.5	10.6--14.7

\*Adjusted by age to 2000 U.S. Standard  
SOURCE: Hawaii BRFSS, Hawaii State Department of Health

**Figure 39. Trends in Adult Diabetes Prevalence, BRFSS, Hawaii 1998-2005\***

Year	Percent	95% C.I.
1998	5.6	4.4--7.2
1999	5.2	4.1--6.5
2000	5.2	4.5--5.9
2001	6.1	5.1--7.3
2002	5.6	5.0--6.4
2003	7.2	6.3--8.2
2004	6.6	5.3--8.3
2005	7.0	6.2--7.8

\*Adjusted by age to 2000 U.S. Standard  
SOURCE: Hawaii BRFSS, Hawaii State Department of Health

**Figure 40. Trends in Adult Diabetes Prevalence, HHS 3-Year Moving Average, Hawaii 1998-2005\***

Year	Percent	95% C.I.
1998-2000	6.0	5.6--6.5
1999-2001	6.4	6.0--6.9
2000-2002	6.5	5.8--7.3
2001-2003	7.0	6.3--7.8
2002-2004	7.0	6.3--7.8
2003-2005	7.5	7.0--8.1

\*Adjusted by age to 2000 U.S. Standard  
SOURCE: Hawaii State Department of Health, Office of Health Status Monitoring

**Figure 41. Trends in Adult Diabetes Prevalence by Ethnicity, HHS 3-year moving average, Hawaii 1998-2005\***

Year	Filipino	Native Hawaiian	Japanese	White	Other
1998-2000	6.2	9.3	6.8	4.2	6.4
1999-2001	7.3	10.1	7.3	3.7	7.1
2000-2002	7.9	8.4	7.5	4.1	8.2
2001-2003	9.5	9.0	7.5	3.9	8.8
2002-2004	9.1	9.4	7.4	4.1	9.0
2003-2005	10.1	11.4	8.5	4.0	8.5

\*Adjusted by age to 2000 U.S. Standard  
SOURCE: Hawaii State Department of Health, Office of Health Status Monitoring

**Figure 42. Adult Diabetes Prevalence by Selected Characteristics, BRFSS, Hawaii 2005\***

Ethnicity	Percent	95% C.I.
Filipino	9.1	6.8--11.9
Native Hawaiian	12.8	10.0--16.3
Japanese	5.4	4.0--7.2
White	4.9	4.0--6.1
Others	8.5	6.1--11.7
<b>Gender</b>		
Male	7.9	6.7-- 9.4
Female	6.2	5.3--7.2
<b>County</b>		
Hawaii	8.9	7.4--10.6
Honolulu	7.0	5.9--8.1
Kauai	7.3	5.4--9.9
Maui	4.9	3.8--6.4

\*Adjusted by age to 2000 U.S. Standard  
SOURCE: Hawaii BRFSS, Hawaii State Department of Health

**Figure 43. Adult Diabetes Prevalence by Socioeconomic Status, BRFSS, Hawaii 2005\***

Household Income	Percent	95% C.I.
<\$15,000	14.6	10.5--19.9
\$15,000-24,999	9.8	7.3--13.2
\$25,000-49,999	6.3	5.0--7.8
\$50,000-74,999	6.4	4.8--8.4
>=\$75,000	4.3	3.2--5.9
Unknown	9.1	6.3--12.9
<b>Employment</b>		
Employed	6.2	4.9--7.7
Unemployed	10.4	4.1--23.7
Student/Homemaker	8.3	4.9--13.8
Retired/Can't Work	10.3	7.0--14.9
<b>Education</b>		
<High School	13.8	9.0--20.5
High school	9.3	7.7--11.3
Some college	6.4	5.1--8.0
College	4.4	3.5--5.6

\*Adjusted by age to 2000 U.S. Standard  
SOURCE: Hawaii BRFSS, Hawaii State Department of Health

**Figure 46. Trends in CVD-Associated Hospital Discharges, HHIC, Hawaii 1999-2005**

Year	Coronary Heart Disease	Stroke	Heart Failure	Acute MI	TOTAL CVD
1999	6,467	3,374	2,646	2,284	18,819
2000	6,802	3,288	2,670	2,495	19,156
2001	6,503	3,240	2,682	2,433	19,006
2002	6,749	3,144	2,792	2,661	19,498
2003	6,494	2,982	3,046	2,748	19,182
2004	6,499	2,939	3,221	2,831	19,605
2005	6,101	2,854	3,393	2,940	19,103

SOURCE: Hawaii Health Information Corporation

**Figure 47. Trends in CVD-Associated Hospital Charges, HHIC, Hawaii 1999-2005**

Year	Coronary Heart Disease	Stroke	Heart Failure	Acute MI	TOTAL CVD
1999	\$160,470,831	\$82,679,270	\$48,008,255	\$65,857,059	\$422,409,523
2000	\$173,994,512	\$77,962,219	\$47,510,697	\$75,791,028	\$433,835,987
2001	\$177,575,880	\$82,941,886	\$47,740,979	\$82,941,886	\$459,113,572
2002	\$197,527,323	\$82,535,434	\$54,049,785	\$91,245,277	\$494,287,023
2003	\$199,170,907	\$78,051,283	\$62,846,052	\$89,337,740	\$514,545,098
2004	\$215,024,611	\$84,613,915	\$73,498,330	\$100,724,780	\$569,169,128
2005	\$223,827,188	\$92,323,422	\$88,531,234	\$119,267,813	\$604,793,282

SOURCE: Hawaii Health Information Corporation

Characteristic	MI		Angina/ CHD		Stroke	
	95% CI	95% CI	95% CI	95% CI	95% CI	95% CI
<b>Sex*</b>						
Male	4.6	3.7--5.7	4.1	3.3--5.1	3.2	2.3--4.3
Female	2.7	2.1--3.4	2.7	2.1--3.6	2.6	2.1--3.3
<b>Race/Ethnicity*</b>						
Filipino	2.7	1.6--4.8	2.4	1.3--4.3	2.1	1.1--4.0
Japanese	3.5	2.5--5.0	2.7	1.9--4.0	3.5	2.5--4.9
Native Hawaiian	4.4	2.9--6.8	4.6	3.0--7.1	4.9	2.6--8.9
White	4.0	3.2--5.1	4.2	3.3--5.3	2.7	2.1--3.6
Others	3.2	2.0--5.1	2.9	1.8--4.6	1.9	1.1--3.2
<b>Education*</b>						
Less than high school diploma	11.1	7.1--16.9	6.3	3.9--10.1	8.8	5.3--14.2
High school graduate	3.5	2.6--4.7	2.9	2.0--4.1	2.7	2.0--3.7
Some college	3.1	2.2--4.2	2.9	2.1--3.9	2.5	1.5--4.1
College graduate	2.9	2.2--3.9	3.9	3.0--5.0	2.3	1.7--3.2
<b>Household Income*</b>						
Less than \$15,000	5.4	3.4--8.4	7.4	4.5--11.8	11.0	6.3--18.5
\$15,000-24,999	4.6	3.1--6.7	4.2	2.7--6.5	3.3	2.2--4.8
\$25,000-49,999	4.1	3.0--5.4	3.3	2.3--4.6	2.1	1.5--2.8
\$50,000-74,999	3.4	2.2--5.1	3.2	2.1--4.7	2.0	1.1--3.4
More than \$75,000	2.4	1.6--3.6	2.8	1.9--4.0	1.7	1.1--2.7
Unknown/Refused	3.8	2.3--6.2	3.0	1.9--4.6	4.1	2.5--6.6
<b>County*</b>						
Honolulu	3.5	2.8--4.3	3.3	2.6--4.1	2.8	2.1--3.7
Hawaii	4.0	3.1--5.3	3.8	2.9--5.0	3.2	2.4--4.3
Kauai	3.1	1.8--5.1	3.0	1.8--4.9	2.8	1.6--4.8
Maui	4.3	3.0--6.1	4.1	2.9--5.8	3.1	2.1--4.7
<b>TOTAL*</b>	3.6	3.1--4.3	3.4	2.9--4.1	2.9	2.4--3.5

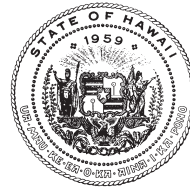
**SOURCE:** Hawaii BRFSS - Hawaii Department of Health  
\*Percentages are weighted to population characteristics

# Risk Factors	Hawaii Adults	Adults with Heart Disease*	95% CI
0	29.9	1.9	1.4--2.5
1-2	57.9	3.9	3.4--4.4
>2	12.2	12.1	10.0-14.7

\*2004-2005 age-adjusted average only  
**SOURCE:** Hawaii Health Survey, Department of Health, Office of Health Status Monitoring

	MI	95% CI	Angina/ CHD	95% CI	Stroke	95% CI
<b>DIABETES</b>						
% With Diabetes	9.3	6.0--14.1	10.3	5.3--19.2	6.9	4.0--11.7
% Without Diabetes	2.9	2.4--3.4	2.8	2.3--3.3	2.4	1.9--3.0
<b>HIGH BLOOD PRESSURE</b>						
% With HBP	6.7	5.2--8.5	7.1	5.1--9.9	5.5	4.0--7.7
% Without HBP	1.7	1.3--2.3	1.8	1.3--2.3	1.6	1.1--2.2
<b>HIGH CHOLESTEROL</b>						
% With High Cholesterol	4.9	3.9--6.2	6.0	4.4--8.3	3.9	2.9--5.2
% Without High Cholesterol	2.9	2.2--3.7	2.3	1.8--3.1	2.5	1.7--3.5
<b>OBESITY</b>						
% Obese	5.4	4.0--7.3	5.5	4.1--7.5	4.3	3.0--6.1
% Overweight	3.7	2.9--4.8	3.1	2.3--4.0	1.9	1.3--2.6
% Not Obese/Overweight	2.5	1.9--3.3	2.4	1.8--3.2	2.7	1.9--3.8
<b>PHYSICAL INACTIVITY</b>						
% Physically Inactive	5.1	3.9--6.6	3.6	2.5--5.1	4.9	3.1--7.7
% Not Physically Inactive	3.0	2.4--3.6	3.2	2.6--3.8	2.3	1.8--2.8
<b>SMOKING</b>						
% Current Smoker	5.9	3.9--8.8	4.5	3.0--6.5	4.1	2.4--7.1
% Former Smoker	4.2	3.3--5.4	3.4	2.6--4.5	3.1	1.9--5.1
% Non-Smoker	2.3	1.8--3.0	2.7	2.1--3.5	2.3	1.8--3.0

\*Adjusted by age to 2000 U.S. Standard  
**SOURCE:** Hawaii BRFSS - Hawaii Department of Health



## NONDISCRIMINATION IN SERVICES

We provide access to our activities without regard to race, color, national origin (including language), age, sex, religion or disability. Write or call the Community Health Division or our departmental Affirmative Action Officer at P.O. Box 3378, Honolulu, HI 96801-3378 or at (808) 586-4616 (voice/TTY) within 180 days of the problem.

This publication was supported by the Public Health Block Grants program.